

Handel, Georg Friedrich - Concerto Grosso in A (Op.6 No.11) -

♩ = 42,000011

Harpsichord RH

Violin I Concertino

Violin II Concertino

Violin I Ripieno

Violin II Ripieno

Viola

Cello

Double Bass

2

Harpsichord RH

Violin I Concertino

Violin II Concertino

Violin I Ripieno

Violin II Ripieno

Viola

Cello

Double Bass

This musical score covers measures 2 and 3. The key signature is three sharps (F#, C#, G#). The Harpsichord RH part has a whole note chord in measure 2 and a half note chord in measure 3. The Violin I Concertino and Violin I Ripieno parts play a sixteenth-note figure in measure 2, followed by a sixteenth-note figure in measure 3. The Violin II Concertino and Violin II Ripieno parts play a half note chord in measure 2 and a half note chord in measure 3. The Viola, Cello, and Double Bass parts play a half note chord in measure 2 and a half note chord in measure 3. The number '6' is written below the Violin I parts in measure 2, and the number '3' is written below them in measure 3.



3

Harpsichord RH

Violin I Concertino

Violin II Concertino

Violin I Ripieno

Violin II Ripieno

Viola

Cello

Double Bass

This musical score covers measures 3 and 4. The key signature is three sharps (F#, C#, G#). The Harpsichord RH part has a whole note chord in measure 3 and a half note chord in measure 4. The Violin I Concertino and Violin I Ripieno parts play a sixteenth-note figure in measure 3, followed by a sixteenth-note figure in measure 4. The Violin II Concertino and Violin II Ripieno parts play a half note chord in measure 3 and a half note chord in measure 4. The Viola, Cello, and Double Bass parts play a half note chord in measure 3 and a half note chord in measure 4. The number '6' is written below the Violin I parts in measure 3, and the number '3' is written below them in measure 4.

4

Harpsichord RH  
 Violin I Concertino  
 Violin II Concertino  
 Violin I Ripieno  
 Violin II Ripieno  
 Viola  
 Cello  
 Double Bass



5

Harpsichord RH  
 Violin I Concertino  
 Violin II Concertino  
 Violin I Ripieno  
 Violin II Ripieno  
 Viola  
 Cello  
 Double Bass

Harpichord RH

Handel, Georg Friedrich - Concerto Grosso in A (Op.6 N

♩ = 42,000011



4



Violin I Concertino

Handel, Georg Friedrich - Concerto Grosso in A (Op.6 N

$\text{♩} = 42,000011$

3

5

Violin II Concertino

Handel, Georg Friedrich - Concerto Grosso in A (Op.6 N



Violin I Ripieno

Handel, Georg Friedrich - Concerto Grosso in A (Op.6 N

♩ = 42,000011

First musical staff in bass clef, key signature of two sharps (F# and C#), and 4/4 time signature. It begins with a quarter rest, followed by a sixteenth rest, and then a sixteenth note. The main melody consists of a sixteenth-note run of six notes (marked with a '6' below) and a triplet of sixteenth notes (marked with a '3' below), ending with a quarter note.

Second musical staff, identical to the first, starting with a quarter rest, a sixteenth rest, and a sixteenth note, followed by a sixteenth-note run of six notes (marked '6') and a triplet of sixteenth notes (marked '3').

Third musical staff, identical to the first, starting with a quarter rest, a sixteenth rest, and a sixteenth note, followed by a sixteenth-note run of six notes (marked '6') and a triplet of sixteenth notes (marked '3').

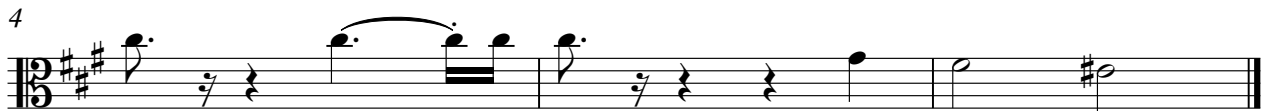
Fourth musical staff, identical to the first, starting with a quarter rest, a sixteenth rest, and a sixteenth note, followed by a sixteenth-note run of six notes (marked '6') and a triplet of sixteenth notes (marked '3').

Fifth musical staff, identical to the first, starting with a quarter rest, a sixteenth rest, and a sixteenth note, followed by a sixteenth-note run of six notes (marked '6') and a triplet of sixteenth notes (marked '3').

Violin II Ripieno

Handel, Georg Friedrich - Concerto Grosso in A (Op.6 N

♩ = 42,000011





Viola

Handel, Georg Friedrich - Concerto Grosso in A (Op.6 N

♩ = 42,000011

4

Cello

Handel, Georg Friedrich - Concerto Grosso in A (Op.6 N

♩ = 42,000011

4

Double Bass

Handel, Georg Friedrich - Concerto Grosso in A (Op.6 N

♩ = 42,000011

4