

Handel, Georg Friedrich - Air and Variations Suite no. 1

♩ = 69,999985

Harpsichord

Harpsichord

Hpsd.

Hpsd.

Hpsd.

Hpsd.

Hpsd.

Hpsd.

♩ = 120,000000

♩ = 120,000000

Hpsd.

Hpsd.

12

Hpsd.

Hpsd.

14

Hpsd.

Hpsd.

16

Hpsd.

$\text{♩} = 136,000153$

Hpsd.

$\text{♩} = 136,000153$

18

Hpsd.

Hpsd.

20

Hpsd.

Hpsd.

22

Hpsd.

Hpsd.

24

Hpsd. {

Hpsd. {

Musical notation for measures 24-25, featuring a treble and bass clef staff with various chords and melodic lines.

26

Hpsd. {

Hpsd. {

Musical notation for measures 26-27, featuring a treble and bass clef staff with various chords and melodic lines.

28

Hpsd. {

Hpsd. {

$\text{♩} = 145,000031$

Musical notation for measures 28-29, featuring a treble and bass clef staff with various chords and melodic lines. A tempo marking $\text{♩} = 145,000031$ is present above the treble staff.

30

Hpsd. {

Hpsd. {

Musical notation for measures 30-31, featuring a treble and bass clef staff with various chords and melodic lines.

32

Hpsd. {

Hpsd. {

Musical notation for measures 32-33, featuring a treble and bass clef staff with various chords and melodic lines.

34

Hpsd. {

Hpsd. {

Musical notation for measures 34-35, featuring a treble and bass clef staff with various chords and melodic lines.

36 $\text{♩} = 170,000092$

Hpsd. Hpsd.

38

Hpsd. Hpsd.

40

Hpsd. Hpsd.

42

Hpsd. Hpsd.

44 $\text{♩} = 150,000000$

Hpsd. Hpsd.

46

Hpsd. Hpsd.

48

Hpsd.

Hpsd.

Detailed description: This system contains two staves of music. The top staff is in treble clef and the bottom staff is in bass clef. Both staves are labeled 'Hpsd.'. The music begins at measure 48. The top staff features a melodic line with eighth and sixteenth notes, including a triplet of eighth notes in measure 48. The bottom staff provides a bass line with eighth and sixteenth notes, including a triplet of eighth notes in measure 48. The key signature has one flat (B-flat).

50

Hpsd.

Hpsd.

Detailed description: This system contains two staves of music. The top staff is in treble clef and the bottom staff is in bass clef. Both staves are labeled 'Hpsd.'. The music begins at measure 50. The top staff features a melodic line with eighth and sixteenth notes. The bottom staff provides a bass line with eighth and sixteenth notes. The key signature has one flat (B-flat).

51

Hpsd.

Hpsd.

Detailed description: This system contains two staves of music. The top staff is in treble clef and the bottom staff is in bass clef. Both staves are labeled 'Hpsd.'. The music begins at measure 51. The top staff features a melodic line with eighth and sixteenth notes, ending with a triplet of eighth notes in measure 51. The bottom staff provides a bass line with eighth and sixteenth notes, ending with a triplet of eighth notes in measure 51. The key signature has one flat (B-flat).

♩ = 69,999985

4

7

9 ♩ = 120,000000

11

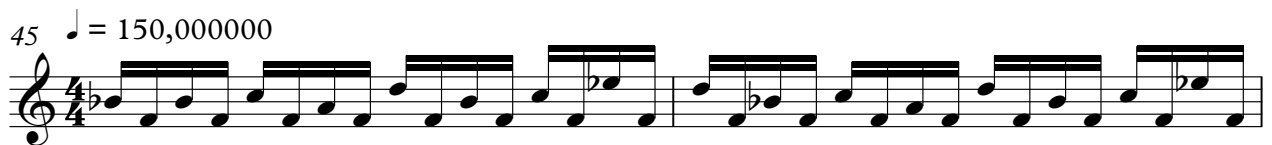
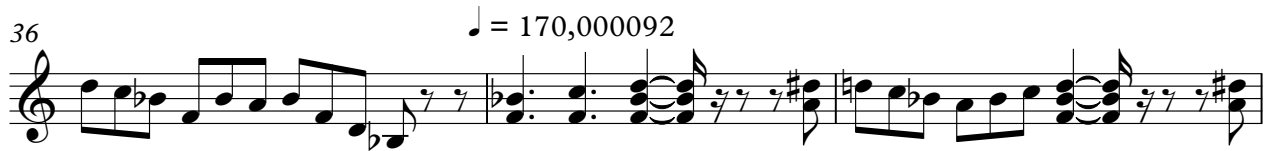
13

15 ♩ = 136,000153

18

22

Harpisichord



51

Musical notation for Harpsichord, measure 51. The notation is on a single staff with a treble clef. It begins with a treble clef and a common time signature. The first measure contains a sixteenth-note triplet starting on G4, followed by a quarter note on A4, and another sixteenth-note triplet starting on B4. The second measure contains a quarter note on C5, followed by a quarter note on B4, and a quarter note on A4. The third measure contains a quarter note on G4, followed by a quarter note on F4, and a quarter note on E4. The fourth measure contains a quarter note on D4, followed by a quarter note on C4, and a quarter note on B3. The fifth measure contains a quarter note on A3, followed by a quarter note on G3, and a quarter note on F3. The sixth measure contains a quarter note on E3, followed by a quarter note on D3, and a quarter note on C3. The seventh measure contains a quarter note on B2, followed by a quarter note on A2, and a quarter note on G2. The eighth measure contains a quarter note on F2, followed by a quarter note on E2, and a quarter note on D2. The ninth measure contains a quarter note on C2, followed by a quarter note on B1, and a quarter note on A1. The tenth measure contains a quarter note on G1, followed by a quarter note on F1, and a quarter note on E1. The eleventh measure contains a quarter note on D1, followed by a quarter note on C1, and a quarter note on B0. The twelfth measure contains a quarter note on A0, followed by a quarter note on G0, and a quarter note on F0. The thirteenth measure contains a quarter note on E0, followed by a quarter note on D0, and a quarter note on C0. The fourteenth measure contains a quarter note on B0, followed by a quarter note on A0, and a quarter note on G0. The fifteenth measure contains a quarter note on F0, followed by a quarter note on E0, and a quarter note on D0. The sixteenth measure contains a quarter note on C0, followed by a quarter note on B0, and a quarter note on A0. The seventeenth measure contains a quarter note on G0, followed by a quarter note on F0, and a quarter note on E0. The eighteenth measure contains a quarter note on D0, followed by a quarter note on C0, and a quarter note on B0. The nineteenth measure contains a quarter note on A0, followed by a quarter note on G0, and a quarter note on F0. The twentieth measure contains a quarter note on G0, followed by a quarter note on F0, and a quarter note on E0. The piece ends with a double bar line.

♩ = 69,999985

6

♩ = 120,000000

10

14

17

♩ = 136,000153

19

21

23

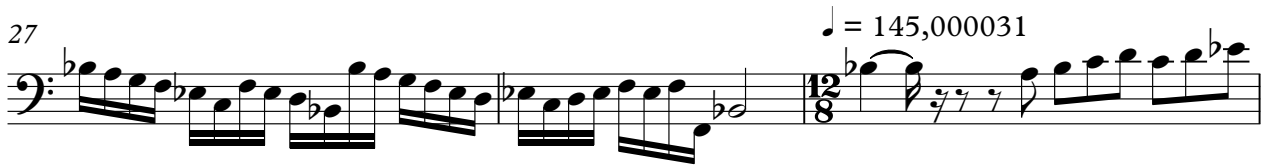
V.S.

Harpsichord

25



27



30



32



35



38



40



43



46



50

