

Handel, Georg Friedrich - Six Grand Fugues for keyt

Track 3

Track 4



5

Track 2

Track 3

Track 4



8

Track 2

Track 3

Track 4

Track 5



11

Track 2

Track 3

Track 5



14

Track 2

Track 3

Track 4

Track 5

17

Track 2

Track 3

Track 4

Track 5



20

Track 2

Track 3

Track 4

Track 5

23

Track 2

Track 3

Track 5



26

Track 2

Track 3

Track 4

Track 5



29

Track 2

Track 3

Track 4

Track 5

32

Track 2

Track 3

Track 4

Track 5



35

Track 2

Track 3

Track 4

Track 5

38

Track 2

Track 3

Track 4

Track 5



41

Track 2

Track 3

Track 4

Track 5

44

Track 2

Track 3

Track 5

47

Track 2

Track 3

Track 4

Track 5

50

Track 2

Track 3

Track 4

Track 5

8

53

Track 2

Track 3

Track 4

Track 5



56

Track 2

Track 3

Track 5

59

Track 2

Track 3

Track 4

Track 5

This musical score block covers measures 59 through 61. It consists of five tracks. Track 2 (treble clef) starts with a melodic line in measure 59, followed by a whole rest in measure 60, and resumes in measure 61. Track 3 (treble clef) has a melodic line in measure 59, a whole rest in measure 60, and resumes in measure 61. Track 4 (treble clef) has whole rests in measures 59 and 60, and a chord in measure 61. Track 5 (grand staff) has a whole rest in measure 59, a melodic line in measure 60, and a whole rest in measure 61.



62

Track 2

Track 3

Track 4

Track 5

This musical score block covers measures 62 through 64. It consists of five tracks. Track 2 (treble clef) has a melodic line in measure 62, a whole rest in measure 63, and resumes in measure 64. Track 3 (treble clef) has a melodic line in measure 62, a whole rest in measure 63, and resumes in measure 64. Track 4 (treble clef) has a melodic line in measure 62, a whole rest in measure 63, and resumes in measure 64. Track 5 (grand staff) has a melodic line in measure 62, a whole rest in measure 63, and resumes in measure 64.

65

Track 2

Track 3

Track 4

Track 5



68

Track 2

Track 3

Track 4

Track 5

71

Track 2

Musical notation for Track 2, measures 71-73. It features a treble clef, a key signature of one sharp (F#), and a 3/4 time signature. The melody consists of eighth and quarter notes. The final measure contains two triplet eighth notes.

Track 3

Musical notation for Track 3, measures 71-73. It features a treble clef, a key signature of one sharp (F#), and a 3/4 time signature. The melody consists of quarter and eighth notes.

Track 4

Musical notation for Track 4, measures 71-73. It features a bass clef, a key signature of one sharp (F#), and a 3/4 time signature. The melody consists of quarter and eighth notes.

Track 5

Musical notation for Track 5, measures 71-73. It features a bass clef, a key signature of one sharp (F#), and a 3/4 time signature. The melody consists of eighth and quarter notes.

6

11

16

21

25

30

35

40

44

48

V.S.

52



57



62



66



70



3

8

13

17

23

27

32

35

Detailed description: This musical score is for a single melodic line in 4/4 time. It begins with a treble clef and a key signature of one sharp (F#). The first measure contains a triplet of eighth notes. The piece features a variety of rhythmic patterns, including eighth and sixteenth notes, often beamed together. There are several accidentals, including sharps and naturals, throughout the score. The notation is presented in a single staff across eight systems, with measure numbers 3, 8, 13, 17, 23, 27, 32, and 35 marking the beginning of each system.

39



44



49



54



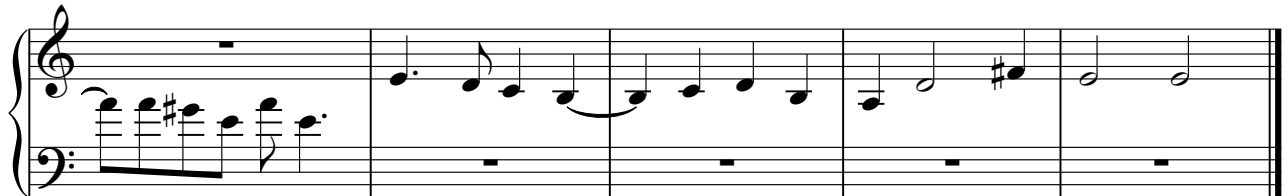
59



64



69



Musical notation for measures 1-5 of the first system. The system consists of two staves, Treble and Bass clef, in 4/4 time. Measure 1: Treble clef has a quarter rest, Bass clef has a quarter rest. Measure 2: Treble clef has a quarter rest, Bass clef has a quarter note G#2, quarter note A2, quarter note B2. Measure 3: Treble clef has a quarter rest, Bass clef has a quarter note C3, quarter note B2, quarter note A2, quarter note G#2. Measure 4: Treble clef has a quarter rest, Bass clef has a quarter note F#2, quarter note E2, quarter note D2, quarter note C2. Measure 5: Treble clef has a quarter rest, Bass clef has a quarter note B1, quarter note A1, quarter note G1, quarter note F#1.

6

Musical notation for measures 6-10 of the second system. The system consists of two staves, Treble and Bass clef, in 4/4 time. Measure 6: Treble clef has a quarter rest, Bass clef has a quarter note G#2, quarter note A2, quarter note B2, quarter note C3. Measure 7: Treble clef has a quarter rest, Bass clef has a quarter note B2, quarter note A2, quarter note G#2, quarter note F#2. Measure 8: Treble clef has a quarter rest, Bass clef has a quarter note E2, quarter note D2, quarter note C2, quarter note B1. Measure 9: Treble clef has a quarter rest, Bass clef has a quarter note A1, quarter note G1, quarter note F#1, quarter note E1. Measure 10: Treble clef has a quarter rest, Bass clef has a quarter note D1, quarter note C1, quarter note B0, quarter note A0.

11

Musical notation for measures 11-18 of the third system. The system consists of one staff, Bass clef, in 4/4 time. Measure 11: Bass clef has a quarter rest, quarter note G#2, quarter note A2, quarter note B2, quarter note C3. Measure 12: Bass clef has a quarter rest, quarter note B2, quarter note A2, quarter note G#2, quarter note F#2. Measure 13: Bass clef has a quarter rest, quarter note E2, quarter note D2, quarter note C2, quarter note B1. Measure 14: Bass clef has a quarter rest, quarter note A1, quarter note G1, quarter note F#1, quarter note E1. Measure 15: Bass clef has a quarter rest, quarter note D1, quarter note C1, quarter note B0, quarter note A0. Measure 16: Bass clef has a quarter rest, quarter note G#2, quarter note A2, quarter note B2, quarter note C3. Measure 17: Bass clef has a quarter rest, quarter note B2, quarter note A2, quarter note G#2, quarter note F#2. Measure 18: Bass clef has a quarter rest, quarter note E2, quarter note D2, quarter note C2, quarter note B1.

19

Musical notation for measures 19-29 of the fourth system. The system consists of one staff, Bass clef, in 4/4 time. Measure 19: Bass clef has a quarter rest, quarter note G#2, quarter note A2, quarter note B2, quarter note C3. Measure 20: Bass clef has a quarter rest, quarter note B2, quarter note A2, quarter note G#2, quarter note F#2. Measure 21: Bass clef has a quarter rest, quarter note E2, quarter note D2, quarter note C2, quarter note B1. Measure 22: Bass clef has a quarter rest, quarter note A1, quarter note G1, quarter note F#1, quarter note E1. Measure 23: Bass clef has a quarter rest, quarter note D1, quarter note C1, quarter note B0, quarter note A0. Measure 24: Bass clef has a quarter rest, quarter note G#2, quarter note A2, quarter note B2, quarter note C3. Measure 25: Bass clef has a quarter rest, quarter note B2, quarter note A2, quarter note G#2, quarter note F#2. Measure 26: Bass clef has a quarter rest, quarter note E2, quarter note D2, quarter note C2, quarter note B1. Measure 27: Bass clef has a quarter rest, quarter note A1, quarter note G1, quarter note F#1, quarter note E1. Measure 28: Bass clef has a quarter rest, quarter note D1, quarter note C1, quarter note B0, quarter note A0. Measure 29: Bass clef has a quarter rest, quarter note G#2, quarter note A2, quarter note B2, quarter note C3.

30

Musical notation for measures 30-33 of the fifth system. The system consists of one staff, Treble clef, in 4/4 time. Measure 30: Treble clef has a quarter rest, quarter note G#2, quarter note A2, quarter note B2, quarter note C3. Measure 31: Treble clef has a quarter rest, quarter note B2, quarter note A2, quarter note G#2, quarter note F#2. Measure 32: Treble clef has a quarter rest, quarter note E2, quarter note D2, quarter note C2, quarter note B1. Measure 33: Treble clef has a quarter rest, quarter note A1, quarter note G1, quarter note F#1, quarter note E1.

34

Musical notation for measures 34-37 of the sixth system. The system consists of one staff, Bass clef, in 4/4 time. Measure 34: Bass clef has a quarter note G#2, quarter note A2, quarter note B2, quarter note C3. Measure 35: Bass clef has a quarter note B2, quarter note A2, quarter note G#2, quarter note F#2. Measure 36: Bass clef has a quarter note E2, quarter note D2, quarter note C2, quarter note B1. Measure 37: Bass clef has a quarter note A1, quarter note G1, quarter note F#1, quarter note E1.

37

41

51

56

65

70

Track 5

Handel, Georg Friedrich - Six Grand Fugues for keyboa

The image displays a musical score for Track 5, consisting of six systems of notation. The first five systems are bass staves, and the sixth system is a grand staff (treble and bass staves). The score includes measure numbers 9, 14, 20, 25, 30, 35, 41, and 46. A 9-measure rest is shown at the beginning of the first system. A 3-measure rest is shown at the end of the sixth system. The notation includes various rhythmic values, accidentals, and articulation marks.

52

2

58

62

67

71