

Handel, Georg Friedrich - Sonata for Alto Recorder and

flute

right

left

♩ = 120,000000

♩ = 120,000000

flute

right

left

4

3

7

flute

right

left

This system contains measures 7 and 8. The flute part (treble clef) features a melodic line of eighth notes, starting with a B-flat. The right piano part (treble and bass clefs) provides harmonic support with chords and eighth-note accompaniment. The left piano part (bass clef) plays a steady eighth-note accompaniment.

9

flute

right

left

This system contains measures 9 and 10. The flute part (treble clef) continues with eighth-note runs. The right piano part (treble and bass clefs) features chords and eighth-note accompaniment. The left piano part (bass clef) maintains the eighth-note accompaniment.

11

flute

right

left

This system contains measures 11, 12, and 13. The flute part (treble clef) continues with eighth-note runs. The right piano part (treble and bass clefs) features chords and eighth-note accompaniment. The left piano part (bass clef) maintains the eighth-note accompaniment.

14

flute

right

left

3

17

flute

right

left

3

3

20

flute

right

left

23

flute

right

left

25

flute

right

left

28

flute

right

left

31

flute

right

left

34

flute

right

left

36

flute

right

left

38

flute

right

left

41

flute

right

left

44

flute

right

left

47

flute

right

left

49

flute

right

left

51

flute

right

left

53

flute

right

left

56

flute

Musical notation for the flute part, measures 56-58. The staff is in treble clef. Measure 56 contains a sequence of eighth notes: G4, A4, B4, C5, B4, A4, G4, F4, E4, D4, C4. Measure 57 contains a sequence of eighth notes: C4, B3, A3, G3, F3, E3, D3, C3. Measure 58 contains a whole rest.

right

Musical notation for the right hand part, measures 56-58. The staff is in treble clef. Measure 56 contains a sequence of chords: G4-A4, G4-A4-B4, G4-A4-B4-C5, G4-A4-B4-C5. Measure 57 contains a sequence of chords: G4-A4-B4-C5, G4-A4-B4-C5, G4-A4-B4-C5, G4-A4-B4-C5. Measure 58 contains a whole rest.

left

Musical notation for the left hand part, measures 56-58. The staff is in bass clef. Measure 56 contains a sequence of eighth notes: G3, A3, B3, C4, B3, A3, G3, F3, E3, D3, C3. Measure 57 contains a sequence of eighth notes: C3, B2, A2, G2, F2, E2, D2, C2. Measure 58 contains a whole rest.



Handel, Georg Friedrich - Sonata for Alto Recorder and

flute

$\text{♩} = 120,000000$

The image shows a musical score for a flute, consisting of ten staves of music. The score is in 4/4 time and begins with a tempo marking of quarter note = 120. The key signature has one flat (B-flat). The music features a variety of rhythmic patterns, including eighth and sixteenth notes, and rests. There are several triplet markings (indicated by a '3' and a bracket) over groups of notes. The staves are numbered 1, 4, 7, 10, 13, 16, 19, 22, 25, and 29. The notation includes treble clefs, stems, beams, and various accidentals (sharps, flats, naturals).

V.S.

2

flute

33

36

38

41

45

48

50

52

55

Handel, Georg Friedrich - Sonata for Alto Recorder and

right

♩ = 120,000000

Measures 1-4 of the right hand part. The music is in 4/4 time. Measure 1 is a whole rest. Measure 2 contains a half note chord (F4, A4, C5) followed by a half note chord (F4, A4, C5) with a flat sign over the A4. Measure 3 contains a half note chord (F4, A4, C5) followed by a half note chord (F4, A4, C5) with a flat sign over the A4. Measure 4 contains a half note chord (F4, A4, C5) followed by a half note chord (F4, A4, C5) with a flat sign over the A4.

Measures 5-8 of the right hand part. Measure 5 contains a half note chord (F4, A4, C5) followed by a half note chord (F4, A4, C5) with a flat sign over the A4. Measure 6 contains a half note chord (F4, A4, C5) followed by a half note chord (F4, A4, C5) with a flat sign over the A4. Measure 7 contains a half note chord (F4, A4, C5) followed by a half note chord (F4, A4, C5) with a flat sign over the A4. Measure 8 contains a half note chord (F4, A4, C5) followed by a half note chord (F4, A4, C5) with a flat sign over the A4.

Measures 9-13 of the right hand part. Measure 9 contains a half note chord (F4, A4, C5) followed by a half note chord (F4, A4, C5) with a flat sign over the A4. Measure 10 contains a half note chord (F4, A4, C5) followed by a half note chord (F4, A4, C5) with a flat sign over the A4. Measure 11 contains a half note chord (F4, A4, C5) followed by a half note chord (F4, A4, C5) with a flat sign over the A4. Measure 12 contains a half note chord (F4, A4, C5) followed by a half note chord (F4, A4, C5) with a flat sign over the A4. Measure 13 contains a half note chord (F4, A4, C5) followed by a half note chord (F4, A4, C5) with a flat sign over the A4.

Measures 14-17 of the right hand part. Measure 14 contains a half note chord (F4, A4, C5) followed by a half note chord (F4, A4, C5) with a flat sign over the A4. Measure 15 contains a half note chord (F4, A4, C5) followed by a half note chord (F4, A4, C5) with a flat sign over the A4. Measure 16 contains a half note chord (F4, A4, C5) followed by a half note chord (F4, A4, C5) with a flat sign over the A4. Measure 17 contains a half note chord (F4, A4, C5) followed by a half note chord (F4, A4, C5) with a flat sign over the A4.

Measures 18-21 of the right hand part. Measure 18 contains a half note chord (F4, A4, C5) followed by a half note chord (F4, A4, C5) with a flat sign over the A4. Measure 19 contains a half note chord (F4, A4, C5) followed by a half note chord (F4, A4, C5) with a flat sign over the A4. Measure 20 contains a half note chord (F4, A4, C5) followed by a half note chord (F4, A4, C5) with a flat sign over the A4. Measure 21 contains a half note chord (F4, A4, C5) followed by a half note chord (F4, A4, C5) with a flat sign over the A4.

Measures 22-25 of the right hand part. Measure 22 contains a half note chord (F4, A4, C5) followed by a half note chord (F4, A4, C5) with a flat sign over the A4. Measure 23 contains a half note chord (F4, A4, C5) followed by a half note chord (F4, A4, C5) with a flat sign over the A4. Measure 24 contains a half note chord (F4, A4, C5) followed by a half note chord (F4, A4, C5) with a flat sign over the A4. Measure 25 contains a half note chord (F4, A4, C5) followed by a half note chord (F4, A4, C5) with a flat sign over the A4.

V.S.

27

31

35

40

44

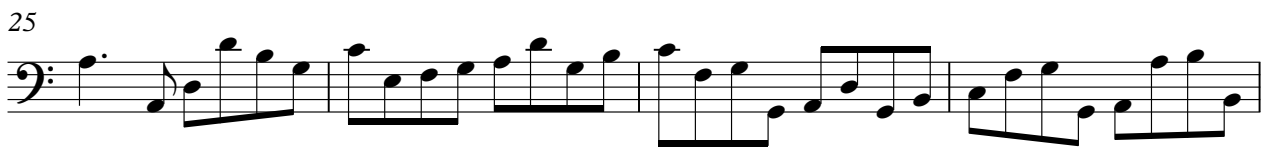
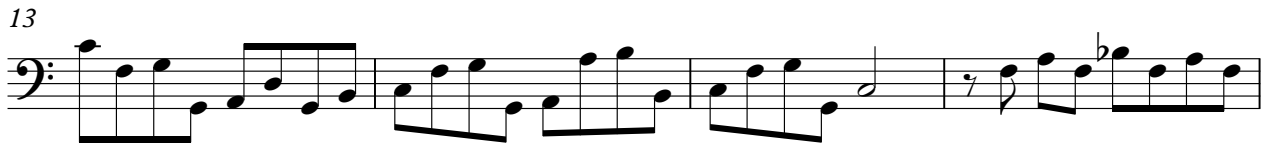
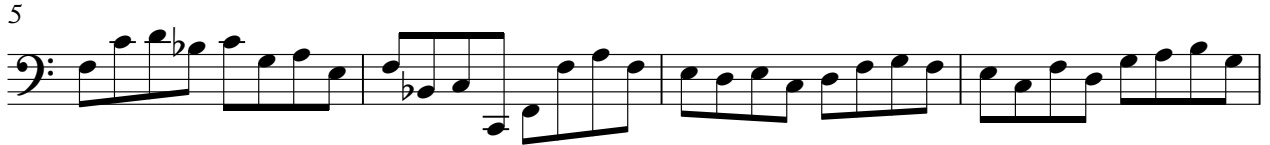
48



left

Handel, Georg Friedrich - Sonata for Alto Recorder and

♩ = 120,000000



V.S.

2

left

41



45



49



54

