

Handel, Georg Friedrich - Water Music - various movements in several different a

0.0"
1.1,00
Handel: Hornpipe II from Water Music
♩ = 224,999725

Oboe 1
Oboe 2
Bassoons
Bass
Violins 1
Violins 2
Violins 3
Violas



7

Oboe 1
Oboe 2
Bassoons
Bass
Violins 1
Violins 2
Violins 3
Violas

12

Oboe 1
Oboe 2
Bassoons
French Horns
Trumpets
Bass
Violins 1
Violins 2
Violins 3
Violas



18

Oboe 1
Oboe 2
Bassoons
French Horns
Trumpets
Bass
Violins 1
Violins 2
Violins 3
Violas

23

Oboe 1
Oboe 2
Bassoons
French Horns
Bass
Violins 1
Violins 2
Violins 3
Violas



28

Oboe 1
Oboe 2
Bassoons
French Horns
Trumpets
Bass
Violins 1
Violins 2
Violins 3
Violas

33

Oboe 1
Oboe 2
Bassoons
French Horns
Trumpets
Bass
Violins 1
Violins 2
Violins 3
Violas

This musical score covers measures 33 to 37. It features a woodwind section with Oboe 1, Oboe 2, and Bassoons; a brass section with French Horns and Trumpets; and a string section with Bass, Violins 1, 2, and 3, and Violas. The key signature is one sharp (F#) and the time signature is 4/4. The woodwinds and strings play a rhythmic pattern of eighth notes, while the brass instruments play block chords.



38

Oboe 1
Oboe 2
Bassoons
French Horns
Trumpets
Bass
Violins 1
Violins 2
Violins 3
Violas

This musical score covers measures 38 to 42. The instrumentation remains the same as in the previous system. The woodwinds and strings continue with their rhythmic patterns, while the brass instruments play block chords. The score concludes with a double bar line at the end of measure 42.

44

Oboe 1
Oboe 2
Bassoons
Bass
Violins 1
Violins 2
Violins 3
Violas

This musical score covers measures 44 to 47. It features eight staves: Oboe 1 and 2 (treble clef), Bassoons and Bass (bass clef), and Violins 1, 2, 3, and Violas (treble clef). The key signature is one sharp (F#). The music consists of rhythmic patterns with various note values and rests, including some sixteenth-note runs in the strings.



48

Oboe 1
Oboe 2
Bassoons
Bass
Violins 1
Violins 2
Violins 3
Violas

This musical score covers measures 48 to 51. It features the same eight staves as the previous section. The key signature remains one sharp (F#). The music continues with rhythmic patterns, including some sixteenth-note runs in the strings and woodwinds.

52

Oboe 1
Oboe 2
Bassoons
Bass
Violins 1
Violins 2
Violins 3
Violas

This musical score covers measures 52 to 56. It features eight staves: Oboe 1 and 2, Bassoons, Bass, Violins 1, 2, and 3, and Violas. The key signature is one sharp (F#) and the time signature is 4/4. Measures 52-53 show a complex rhythmic pattern with sixteenth notes in the Oboe and Violin parts. Measures 54-56 show a more melodic and sustained texture with various note values and rests.



57

Oboe 1
Oboe 2
Bassoons
Bass
Violins 1
Violins 2
Violins 3
Violas

This musical score covers measures 57 to 61. It features the same eight staves as the previous system. Measures 57-58 feature a prominent sixteenth-note pattern in the Oboe and Violin 2 parts. Measures 59-61 show a continuation of the melodic and harmonic material with various rhythmic values and rests.

60

Oboe 1
Oboe 2
Bassoons
Bass
Violins 1
Violins 2
Violins 3
Violas

This system contains measures 60 through 63. The Oboe 1 and 2 parts play a melodic line with eighth notes and quarter notes. The Bassoons play a similar line in the bass clef. The Bass part features a more active eighth-note pattern. The Violins 1, 2, and 3 parts play a rhythmic accompaniment of eighth notes. The Viola part provides a steady bass line.



64

Oboe 1
Oboe 2
Bassoons
Bass
Violins 1
Violins 2
Violins 3
Violas

This system contains measures 64 through 68. The Oboe 1 and 2 parts continue their melodic line. The Bassoons play a steady accompaniment. The Bass part has a more active eighth-note pattern. The Violins 1, 2, and 3 parts play a rhythmic accompaniment of eighth notes. The Viola part provides a steady bass line.



69

Bass
Violins 1
Violins 2
Violins 3
Violas

This system contains measures 69 through 72. The Bass part features a more active eighth-note pattern. The Violins 1, 2, and 3 parts play a rhythmic accompaniment of eighth notes. The Viola part provides a steady bass line.

74

Oboe 1
Oboe 2
Bassoons
Bass
Violins 1
Violins 2
Violins 3
Violas



80

Oboe 1
Oboe 2
Bassoons
Bass
Violins 1
Violins 2
Violins 3
Violas

85

Oboe 1
Oboe 2
Bassoons
Trumpets
Bass
Violins 1
Violins 2
Violins 3
Violas



90

Oboe 1
Oboe 2
Bassoons
French Horns
Trumpets
Bass
Violins 1
Violins 2
Violins 3
Violas

96

Oboe 1

Oboe 2

Bassoons

French Horns

Bass

Violins 1

Violins 2

Violins 3

Violas



101

Oboe 1

Oboe 2

Bassoons

French Horns

Trumpets

Bass

Violins 1

Violins 2

Violins 3

Violas

106

Oboe 1
Oboe 2
Bassoons
French Horns
Trumpets
Bass
Violins 1
Violins 2
Violins 3
Violas



110

♩ = 180,000183 ♩ = 130,000137

Oboe 1
Oboe 2
Bassoons
French Horns
Trumpets
Bass
Violins 1
Violins 2
Violins 3
Violas

Oboe 1

Handel, Georg Friedrich - Water Music - various movern

♩ = 224,999725

5

9

13 **6**

22

26 **3**

33

37

42

46

V.S.

50

52

55

58

62

66

76

80

85

94

98

102

108

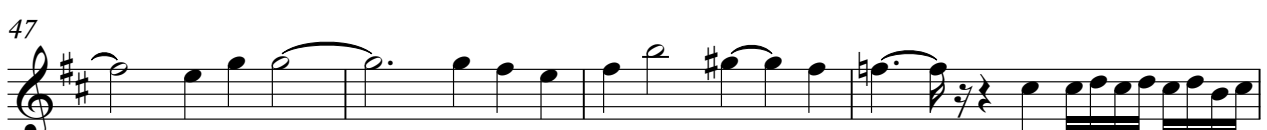
111

♪ = 180,000183 ♩ = 130,000137

Oboe 2

Handel, Georg Friedrich - Water Music - various movern

♩ = 224,999725



V.S.

51



54



57



60

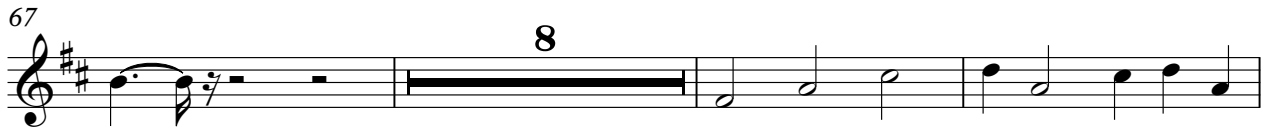


64



67

8



78



82



86

6



95



Bassoons

Handel, Georg Friedrich - Water Music - various movern

♩ = 224,999725



V.S.

Bassoons

102

Musical notation for measure 102 in bass clef with a key signature of one sharp (F#). The measure begins with a whole rest. The second measure contains a triplet of eighth notes, indicated by a '3' above the notes. The third measure contains a quarter rest followed by a quarter note. The fourth measure contains a quarter note, an eighth note, and a quarter note. The fifth measure contains a quarter note, an eighth note, and a quarter note. The sixth measure contains a quarter note, an eighth note, and a quarter note. The seventh measure contains a quarter note, an eighth note, and a quarter note. The eighth measure contains a quarter note, an eighth note, and a quarter note.

109

Musical notation for measure 109 in bass clef with a key signature of one sharp (F#). The measure begins with a quarter note, followed by a quarter note, a quarter note, and a quarter note. The second measure contains a quarter note, a quarter note, a quarter note, and a quarter note. The third measure contains a quarter note, a quarter note, and a quarter note. The fourth measure contains a quarter note, an eighth note, and a quarter note. The fifth measure contains a quarter note, an eighth note, and a quarter note. The sixth measure contains a quarter note, an eighth note, and a quarter note. The seventh measure contains a quarter note, an eighth note, and a quarter note. The eighth measure contains a quarter note, an eighth note, and a quarter note.

112

♪ = 180,000183

♪ = 130,000137

Musical notation for measure 112 in bass clef with a key signature of one sharp (F#). The measure begins with a quarter note, followed by a quarter note, a quarter note, and a quarter note. The second measure contains a quarter note, a quarter note, and a quarter note. The third measure contains a quarter note, an eighth note, and a quarter note. The fourth measure contains a quarter note, an eighth note, and a quarter note. The fifth measure contains a quarter note, an eighth note, and a quarter note. The sixth measure contains a quarter note, an eighth note, and a quarter note. The seventh measure contains a quarter note, an eighth note, and a quarter note. The eighth measure contains a quarter note, an eighth note, and a quarter note.

French Horns

Handel, Georg Friedrich - Water Music - various movern

♩ = 224,999725

15

19

23

32

38

49

90

95

104

110

112

♩ = 180,000183

♩ = 130,000137

Trumpets

Handel, Georg Friedrich - Water Music - various movern

♩ = 224,999725

11

15

21

30

34

38

45

86

90

96

103

Detailed description: This image shows a musical score for Trumpets, consisting of ten staves of music. The key signature is three sharps (F#, C#, G#) and the time signature is 3/4. The tempo is marked as ♩ = 224,999725. The score is divided into measures, with measure numbers 11, 15, 21, 30, 34, 38, 45, 86, 90, 96, and 103 indicated. The music features various rhythmic patterns, including eighth and sixteenth notes, and rests. There are several measures with a thick black bar over them, indicating a full rest or a specific performance instruction. The notation includes stems, beams, and various note heads.

2

Trumpets

106

110

112

♩ = 180,000183

♩ = 130,000137

Bass

Handel, Georg Friedrich - Water Music - various mover

♩ = 224,999725

6

10

20

24

28

35

39

43

47

V.S.

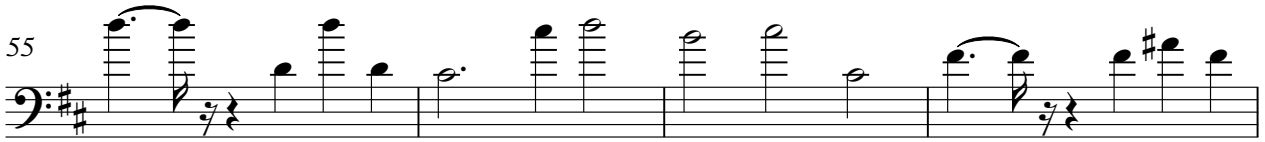
2

Bass

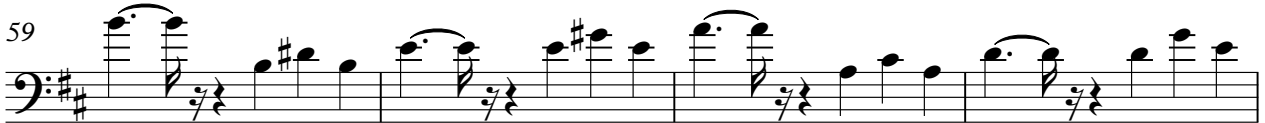
51



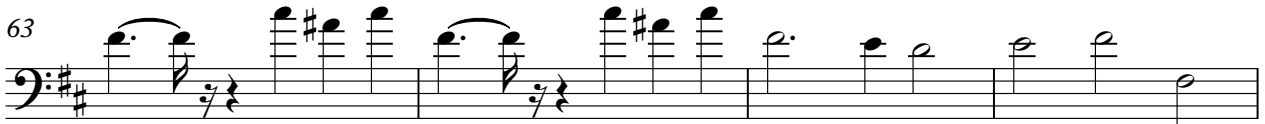
55



59



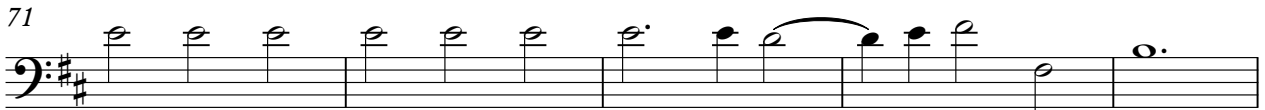
63



67



71



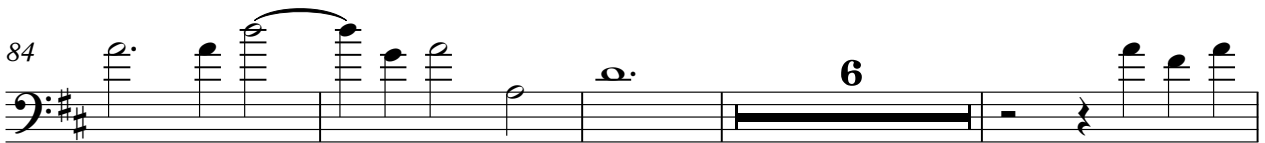
76



80



84



94



98 Bass 3

102 3

109

112

♩ = 180,000183 ♩ = 130,000137

Violins 1

Handel, Georg Friedrich - Water Music - various movern

♩ = 224,999725

5

9

13 6

22

26 3

33

37

42

45

V.S.



83



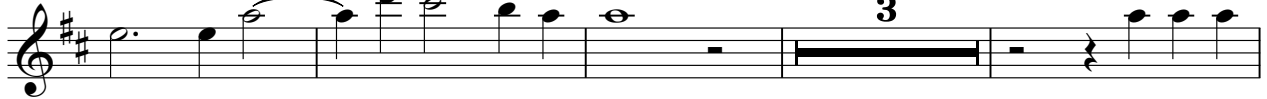
87



96



100



107



111



Violins 2

Handel, Georg Friedrich - Water Music - various movern

♩ = 224,999725

6

10

20

24

28

35

39

43

47

V.S.

51

54

57

60

64

68

72

77

81

85

6

Violins 2

94



98



102



109



112

♪ = 180,000183

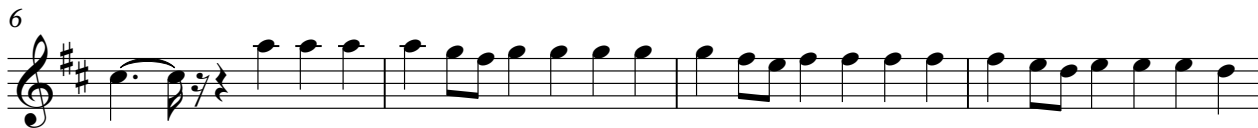
♪ = 130,000137



Violins 3

Handel, Georg Friedrich - Water Music - various movern

♩ = 224,999725



V.S.

49



52



55



59



62



66



70



75



80



84



Violins 3

94



98



102



109



112

♪ = 180,000183

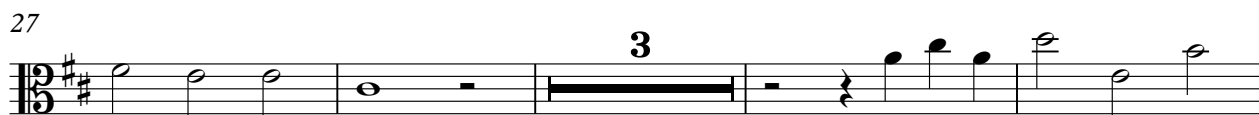
♪ = 130,000137



Violas

Handel, Georg Friedrich - Water Music - various movern

♩ = 224,999725



V.S.

Violas

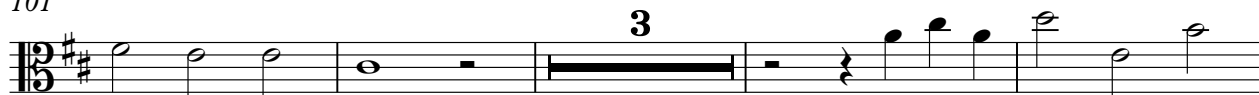
93



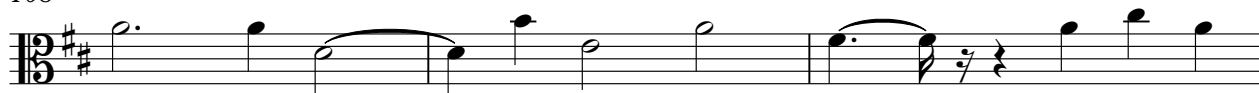
97



101



108



111

