

Haydn, Joseph - Mass No. 3 in Dmin "Lord Nelson Mass"

♩ = 160,000000

ORCHESTRA

5

ORCHESTRA

soprano

tenor

9

ORCHESTRA

soprano

alto

tenor

bass

14

soprano

alto

tenor

bass

19

soprano

alto

tenor

bass

24

ORCHESTRA

ORCHESTRA

soprano

alto

tenor

bass

28

ORCHESTRA

ORCHESTRA

soprano

tenor

3

32

ORCHESTRA

ORCHESTRA

soprano

alto

tenor

bass

37

soprano

alto

tenor

bass

42

soprano

alto

tenor

bass

This block contains the vocal staves for measures 42 through 45. The soprano part begins with a quarter note G4, followed by quarter notes A4 and B4, then a quarter rest. The alto part starts with a half note G3, followed by quarter notes A3, B3, and C4, then a quarter rest. The tenor part begins with a quarter note G2, followed by quarter notes A2 and B2, then a quarter rest. The bass part starts with a quarter note G1, followed by quarter notes A1, B1, and C2, then a quarter rest. The music continues with various rhythmic patterns and rests in each part.

46

ORCHESTRA

ORCHESTRA

soprano

alto

tenor

bass

This block contains the orchestra and vocal staves for measures 46 through 48. The orchestra part is written in 3/8 time and features a complex melodic line in the upper staff and a supporting bass line in the lower staff. The vocal staves (soprano, alto, tenor, and bass) show the vocalists' parts for these measures. The soprano part has a quarter note G4, followed by quarter notes A4 and B4, then a quarter rest. The alto part has a quarter note G3, followed by quarter notes A3 and B3, then a quarter rest. The tenor part has a quarter note G2, followed by quarter notes A2 and B2, then a quarter rest. The bass part has a quarter note G1, followed by quarter notes A1 and B1, then a quarter rest.

49 5

ORCHESTRA

ORCHESTRA

soprano

alto

tenor

bass

53

soprano

alto

tenor

bass

58

soprano

alto

tenor

bass

62

soprano

alto

tenor

bass

This system of music covers measures 62 to 66. It features four vocal parts: soprano, alto, tenor, and bass. The key signature is one sharp (F#) and the time signature is 4/4. The soprano part begins with a half note G4, followed by quarter notes A4, B4, C5, D5, E5, F#5, G5, A5, B5, C6, D6, E6, F#6, G6, A6, B6, C7. The alto part starts with a quarter note G4, followed by quarter notes A4, B4, C5, D5, E5, F#5, G5, A5, B5, C6, D6, E6, F#6, G6, A6, B6, C7. The tenor part begins with a half note G3, followed by quarter notes A3, B3, C4, D4, E4, F#4, G4, A4, B4, C5, D5, E5, F#5, G5, A5, B5, C6. The bass part starts with a quarter note G2, followed by quarter notes A2, B2, C3, D3, E3, F#3, G3, A3, B3, C4, D4, E4, F#4, G4, A4, B4, C5.

67

soprano

alto

tenor

bass

This system of music covers measures 67 to 71. The soprano part continues with quarter notes D6, E6, F#6, G6, A6, B6, C7, followed by a quarter rest, a quarter note G6, a quarter note F#6, a quarter note E6, and a quarter note D6. The alto part continues with quarter notes G5, A5, B5, C6, D6, E6, F#6, G6, A6, B6, C7, followed by a quarter rest, a quarter note G6, a quarter note F#6, a quarter note E6, and a quarter note D6. The tenor part continues with quarter notes G4, A4, B4, C5, D5, E5, F#5, G5, A5, B5, C6, followed by a quarter rest, a quarter note G5, a quarter note F#5, a quarter note E5, and a quarter note D5. The bass part continues with quarter notes G2, A2, B2, C3, D3, E3, F#3, G3, A3, B3, C4, followed by a quarter rest, a quarter note G3, a quarter note F#3, a quarter note E3, and a quarter note D3.

72

soprano

alto

tenor

bass

This system of music covers measures 72 to 76. The soprano part begins with a quarter rest, followed by quarter notes G4, A4, B4, C5, D5, E5, F#5, G5, A5, B5, C6, D6, E6, F#6, G6, A6, B6, C7. The alto part starts with a quarter note G4, followed by quarter notes A4, B4, C5, D5, E5, F#5, G5, A5, B5, C6, D6, E6, F#6, G6, A6, B6, C7. The tenor part begins with a quarter rest, followed by quarter notes G3, A3, B3, C4, D4, E4, F#4, G4, A4, B4, C5, D5, E5, F#5, G5, A5, B5, C6. The bass part starts with a quarter note G2, followed by quarter notes A2, B2, C3, D3, E3, F#3, G3, A3, B3, C4, D4, E4, F#4, G4, A4, B4, C5.

77

soprano

alto

tenor

bass

This block contains the vocal staves for measures 77 through 80. The soprano, alto, and tenor parts begin with a half-note rest followed by a half-note melody. The bass part begins with a half-note rest followed by a half-note melody. The key signature is two sharps (F# and C#).

81

ORCHESTRA

ORCHESTRA

soprano

alto

tenor

bass

This block contains the orchestra and vocal staves for measures 81 through 84. The orchestra part is written in 3/8 time and features a rhythmic pattern of eighth notes. The vocal staves (soprano, alto, tenor, and bass) continue with their melodic lines. The key signature is two sharps (F# and C#).

ORCHESTRA

Haydn, Joseph - Mass No. 3 in Dmin "Lord Nelson Mass"

♩ = 160,000000

6

27

31

13

47

52

28

81



ORCHESTRA

Haydn, Joseph - Mass No. 3 in Dmin "Lord Nelson Mass"

♩ = 160,000000

6

17

27

32

13

49

53

28

Haydn, Joseph - Mass No. 3 in Dmin "Lord Nelson Mass"

soprano

♩ = 160,000000

7

13

19

26

4

35

41

44

3



alto

Haydn, Joseph - Mass No. 3 in Dmin "Lord Nelson Mass"

♩ = 160,000000  
8

14

20

27

4

36

42

45

3





2

tenor

50



56



62



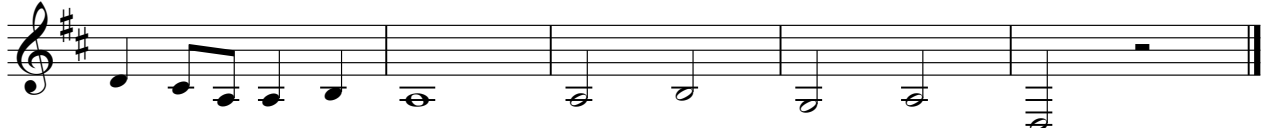
68



74



80



Haydn, Joseph - Mass No. 3 in Dmin "Lord Nelson Mass"

bass

♩ = 160,000000  
8



