

♩ = 120,000000 ♩ = 250,000000 ♩ = 150,000000

♩ = 130,000137 ♩ = 140,00013

Violin

Viola

Violoncello

♩ = 130,000137 ♩ = 144,37,000137 ♩ = 140,000137

5

Vln.

Vla.

Vc.

10

Vln.

Vla.

Vc.

♩ = 130,000137 ♩ = 144,37,000137 ♩ = 120,000000

12

Vln.

Vla.

Vc.

25 $\text{♩} = 130,000137 = 126,000000137$

Vln. Vla. Vc.

This system contains measures 25, 26, and 27. The tempo is marked as $\text{♩} = 130,000137 = 126,000000137$. The Violin part (Vln.) is in treble clef with a key signature of one flat. The Viola (Vla.) and Violoncello (Vc.) parts are in bass clef with a key signature of one flat. Measure 25 features a rhythmic pattern of eighth notes with rests. Measure 26 continues this pattern with some ties. Measure 27 shows a change in the Viola and Violoncello parts, with the Viola playing a more melodic line and the Violoncello providing harmonic support.

28 $\text{♩} = 132,000137$ $\text{♩} = 134,000000198$ $\text{♩} = 130,000137$

Vln. Vla. Vc.

This system contains measures 28, 29, and 30. The tempo markings are $\text{♩} = 132,000137$, $\text{♩} = 134,000000198$, and $\text{♩} = 130,000137$. The Violin part (Vln.) is in treble clef. The Viola (Vla.) and Violoncello (Vc.) parts are in bass clef. Measure 28 has a tempo of 132. Measure 29 has a tempo of 134. Measure 30 has a tempo of 130. The Violin part plays a melodic line with some ties. The Viola and Violoncello parts provide harmonic accompaniment with various rhythmic patterns.

31 $\text{♩} = 140,000137$

Vln. Vla. Vc.

This system contains measures 31, 32, and 33. The tempo is marked as $\text{♩} = 140,000137$. The Violin part (Vln.) is in treble clef. The Viola (Vla.) and Violoncello (Vc.) parts are in bass clef. Measure 31 features a melodic line in the Violin. The Viola and Violoncello parts play a rhythmic accompaniment. Measure 32 continues the melodic development in the Violin. Measure 33 shows a more active Violin part with sixteenth notes.

34

Vln. Vla. Vc.

This system contains measures 34 and 35. The Violin part (Vln.) is in treble clef. The Viola (Vla.) and Violoncello (Vc.) parts are in bass clef. Measure 34 features a melodic line in the Violin. The Viola and Violoncello parts play a rhythmic accompaniment. Measure 35 continues the melodic development in the Violin.

36

Vln. Vla. Vc.

This system contains measures 36 and 37. The Violin part (Vln.) is in treble clef and features a rhythmic pattern of eighth notes with a fermata over the final note of each measure. The Viola part (Vla.) is in alto clef and plays a similar eighth-note pattern with a flat sign on the second measure. The Violoncello part (Vc.) is in bass clef and provides a bass line with eighth notes and rests.

38

$\text{♩} = 120,00000,00080,000120,000137$

Vln. Vla. Vc.

This system contains measures 38, 39, and 40. The Violin part (Vln.) continues with eighth notes and includes a fermata in measure 39. The Viola part (Vla.) features a mix of eighth notes and chords. The Violoncello part (Vc.) continues with a steady eighth-note bass line.

41

$\text{♩} = 130,000137 = 135,000137$

Vln. Vla. Vc.

This system contains measures 41, 42, and 43. The Violin part (Vln.) has a more melodic line with some accidentals. The Viola part (Vla.) includes chords and eighth notes. The Violoncello part (Vc.) continues with eighth notes and rests.

44

$\text{♩} = 130,000137$ $\text{♩} = 132,000137$ $\text{♩} = 132,000137$ $\text{♩} = 132,000137$ $\text{♩} = 132,000137$

Vln. Vla. Vc.

This system contains measures 44, 45, 46, and 47. The Violin part (Vln.) features a melodic line with a triplet in measure 46. The Viola part (Vla.) includes chords and eighth notes. The Violoncello part (Vc.) continues with eighth notes and rests.

48 ♩ = 135,000137

Vln.
Vla.
Vc.

52 ♩ = 130,000137

Vln.
Vla.
Vc.

♩ = 120,000000 ♩ = 142,000076

56

Vln.
Vla.
Vc.

58

Vln.
Vla.
Vc.

60

Vln. Vla. Vc.

This system contains measures 60 and 61. The Violin part (Vln.) is in treble clef with a key signature of one flat (B-flat). It features a melodic line with a long slur over measures 60 and 61. The Viola part (Vla.) is in alto clef and contains a complex rhythmic pattern of eighth notes with several triplet markings. The Violoncello part (Vc.) is in bass clef and also features a complex rhythmic pattern with multiple triplet markings.

62

Vln. Vla. Vc.

This system contains measures 62 and 63. The Violin part (Vln.) continues its melodic line with a slur. The Viola part (Vla.) has a melodic line with a slur and triplet markings. The Violoncello part (Vc.) continues its rhythmic pattern with triplet markings.

64

Vln. Vla. Vc.

This system contains measures 64 and 65. The Violin part (Vln.) has a melodic line with a slur and triplet markings. The Viola part (Vla.) has a melodic line with a slur and triplet markings. The Violoncello part (Vc.) has a melodic line with a slur and triplet markings.

66

Vln. Vla. Vc.

This system contains measures 66 and 67. The Violin part (Vln.) has a melodic line with a slur and triplet markings. The Viola part (Vla.) has a melodic line with a slur and triplet markings. The Violoncello part (Vc.) has a melodic line with a slur and triplet markings.

76 $\text{♩} = 130,000127,000000,000107,000137,000137$

Vln.
Vla.
Vc.

79 $\text{♩} = 116,000840,000160,000140,0000617$

Vln.
Vla.
Vc.

82 $\text{♩} = 130,000107,000244 \text{♩} = 137,000061 \text{♩} = 140,000137$

Vln.
Vla.
Vc.

85

Vln.
Vla.
Vc.

10

97 $\text{♩} = 135,000137$ $\text{♩} = 130,000137$ $\text{♩} = 140,000137$

99 $\text{♩} = 130,000137$

101 $\text{♩} = 120,000000$ $\text{♩} = 130,000137$ $\text{♩} = 132,000137$

104 $\text{♩} = 134,000137$ $\text{♩} = 130,000137$

12

117 $\text{♩} = 130,000137$ $\text{♩} = 130,000137$

Vln. Vla. Vc.

This system contains measures 117, 118, and 119. The music is in 3/8 time. Measure 117 starts with a treble clef and a key signature of one flat. The violin part has a quarter note G4, an eighth note A4, and a quarter note Bb4. The viola part has a quarter note G3, an eighth note A3, and a quarter note Bb3. The cello part has a quarter note G2, an eighth note A2, and a quarter note Bb2. Measure 118 continues with similar patterns. Measure 119 has a treble clef and a key signature of one sharp. The violin part has a quarter note C5, an eighth note D5, and a quarter note E5. The viola part has a quarter note C4, an eighth note D4, and a quarter note E4. The cello part has a quarter note C3, an eighth note D3, and a quarter note E3.

120 $\text{♩} = 132,000100244$ $\text{♩} = 130,000137$ $\text{♩} = 132,000137$

Vln. Vla. Vc.

This system contains measures 120, 121, and 122. The music is in 3/8 time. Measure 120 has a treble clef and a key signature of one flat. The violin part has a quarter note Bb4, an eighth note C5, and a quarter note D5. The viola part has a quarter note Bb3, an eighth note C4, and a quarter note D4. The cello part has a quarter note Bb2, an eighth note C3, and a quarter note D3. Measure 121 continues with similar patterns. Measure 122 has a treble clef and a key signature of one flat. The violin part has a quarter note C5, an eighth note D5, and a quarter note E5. The viola part has a quarter note C4, an eighth note D4, and a quarter note E4. The cello part has a quarter note C3, an eighth note D3, and a quarter note E3.

123 $\text{♩} = 135,000137$

Vln. Vla. Vc.

This system contains measures 123, 124, and 125. The music is in 3/8 time. Measure 123 has a treble clef and a key signature of one flat. The violin part has a quarter note Bb4, an eighth note C5, and a quarter note D5. The viola part has a quarter note Bb3, an eighth note C4, and a quarter note D4. The cello part has a quarter note Bb2, an eighth note C3, and a quarter note D3. Measure 124 continues with similar patterns. Measure 125 has a treble clef and a key signature of one flat. The violin part has a quarter note C5, an eighth note D5, and a quarter note E5. The viola part has a quarter note C4, an eighth note D4, and a quarter note E4. The cello part has a quarter note C3, an eighth note D3, and a quarter note E3.

126

Vln. Vla. Vc.

This system contains measures 126, 127, and 128. The music is in 3/8 time. Measure 126 has a treble clef and a key signature of one flat. The violin part has a quarter note Bb4, an eighth note C5, and a quarter note D5. The viola part has a quarter note Bb3, an eighth note C4, and a quarter note D4. The cello part has a quarter note Bb2, an eighth note C3, and a quarter note D3. Measure 127 continues with similar patterns. Measure 128 has a treble clef and a key signature of one sharp. The violin part has a quarter note C5, an eighth note D5, and a quarter note E5. The viola part has a quarter note C4, an eighth note D4, and a quarter note E4. The cello part has a quarter note C3, an eighth note D3, and a quarter note E3.

130 $\text{♩} = 130,000137$ $\text{♩} = 120,000000$ $\text{♩} = 142,000076$

Vln. Vla. Vc.

This system contains measures 130, 131, and 132. Measure 130 features a triplet of eighth notes in the violin part and sixteenth notes in the viola and cello parts. Measures 131 and 132 contain sixteenth-note runs in the violin and cello parts, and eighth-note runs in the viola part.

133

Vln. Vla. Vc.

This system contains measures 133, 134, and 135. Measure 133 has sixteenth-note runs in the violin and cello parts. Measure 134 features sixteenth-note runs in the viola and cello parts. Measure 135 contains a half-note in the violin part and sixteenth-note runs in the viola and cello parts.

136

Vln. Vla. Vc.

This system contains measures 136, 137, and 138. Measure 136 has a half-note in the violin part and sixteenth-note runs in the viola and cello parts. Measure 137 features sixteenth-note runs in the viola and cello parts. Measure 138 contains sixteenth-note runs in the violin and cello parts, and a half-note in the viola part.

139

Vln. Vla. Vc.

This system contains measures 139, 140, and 141. Measure 139 has sixteenth-note runs in the violin and cello parts. Measure 140 features sixteenth-note runs in the violin and cello parts, and eighth notes in the viola part. Measure 141 contains sixteenth-note runs in the violin and cello parts, and eighth notes in the viola part.

149

Vln. Vla. Vc.

This system contains measures 149 and 150. It features three staves: Violin (Vln.) in treble clef, Viola (Vla.) in alto clef, and Violoncello (Vc.) in bass clef. The key signature has one flat (B-flat). The time signature is 3/8. The music consists of eighth and sixteenth notes with various rests.

151

$\text{♩} = 130,000127,000000,000137,000137 = 120,0000,000107 \text{ ♩} = 120,000000$

Vln. Vla. Vc.

This system contains measures 151, 152, and 153. It features three staves: Violin (Vln.) in treble clef, Viola (Vla.) in alto clef, and Violoncello (Vc.) in bass clef. The key signature has one flat (B-flat). The time signature is 3/8. Measure 151 is followed by two measures of whole rests. The music includes eighth and sixteenth notes.

154

$\text{♩} = 50,000000 \text{ ♯} = 30,000137$

Vln. Vla. Vc.

This system contains measures 154, 155, 156, and 157. It features three staves: Violin (Vln.) in treble clef, Viola (Vla.) in alto clef, and Violoncello (Vc.) in bass clef. The key signature has one flat (B-flat). The time signature is 3/8. Measure 154 is followed by three measures of whole rests. The music includes eighth and sixteenth notes.

158

Vln. Vla. Vc.

This system contains measures 158, 159, and 160. It features three staves: Violin (Vln.) in treble clef, Viola (Vla.) in alto clef, and Violoncello (Vc.) in bass clef. The key signature has one flat (B-flat). The time signature is 3/8. The music consists of eighth and sixteenth notes with various rests.

161

Vln. Vla. Vc.

This system contains measures 161, 162, and 163. The Violin part (Vln.) is in treble clef with a key signature of one flat. It features a melodic line with eighth and sixteenth notes, including a triplet in measure 161 and a half note in measure 162. The Viola part (Vla.) is in alto clef with a key signature of one flat, playing a rhythmic accompaniment of eighth and sixteenth notes. The Violoncello part (Vc.) is in bass clef with a key signature of one flat, providing a harmonic foundation with quarter and eighth notes.

164

Vln. Vla. Vc.

This system contains measures 164, 165, and 166. The Violin part (Vln.) features a melodic line with a long note in measure 164 and a half note in measure 165. The Viola part (Vla.) continues with a rhythmic accompaniment of eighth and sixteenth notes. The Violoncello part (Vc.) provides a harmonic foundation with quarter and eighth notes.

167

Vln. Vla. Vc.

This system contains measures 167, 168, and 169. The Violin part (Vln.) has a melodic line with eighth and sixteenth notes. The Viola part (Vla.) has a rhythmic accompaniment of eighth and sixteenth notes. The Violoncello part (Vc.) provides a harmonic foundation with quarter and eighth notes.

170

Vln. Vla. Vc.

This system contains measures 170, 171, and 172. The Violin part (Vln.) features a melodic line with eighth and sixteenth notes, including a triplet in measure 170. The Viola part (Vla.) has a rhythmic accompaniment of eighth and sixteenth notes. The Violoncello part (Vc.) provides a harmonic foundation with quarter and eighth notes.

172

Vln. Vla. Vc.

This system contains measures 172 and 173. The Violin part (Vln.) is in treble clef with a key signature of one flat. It features a melodic line with a slur over measures 172-173 and a triplet of eighth notes in measure 173. The Viola part (Vla.) is in alto clef with a key signature of one flat, mirroring the Violin's melodic line. The Violoncello part (Vc.) is in bass clef with a key signature of one flat, playing a steady eighth-note accompaniment.

174

Vln. Vla. Vc.

This system contains measures 174 and 175. The Violin part (Vln.) features a triplet of eighth notes in measure 174. The Viola part (Vla.) continues the melodic line from the previous system. The Violoncello part (Vc.) maintains the eighth-note accompaniment.

176

$\text{♩} = 120,000000$

Vln. Vla. Vc.

This system contains measures 176 and 177. The Violin part (Vln.) includes a triplet of eighth notes in measure 176. The Viola part (Vla.) has a more active eighth-note accompaniment. The Violoncello part (Vc.) continues with the eighth-note accompaniment.

178

$\text{♩} = 110,000107$ $\text{♩} = 130,000153$ $\text{♩} = 130,000137$

Vln. Vla. Vc.

This system contains measures 178, 179, and 180. The Violin part (Vln.) has a melodic line with a slur over measures 179-180. The Viola part (Vla.) has a melodic line with a slur over measures 179-180. The Violoncello part (Vc.) has a melodic line with a slur over measures 179-180. The system includes three tempo markings: $\text{♩} = 110,000107$, $\text{♩} = 130,000153$, and $\text{♩} = 130,000137$.

18

182 ♪ = 133,000244 ♪ = 135,000137 ♪ = 130,000137 ♪ = 130,000137 ♪ = 130,000137 ♪ = 130,000137

186 ♪ = 122,000069 ♪ = 122,000069 ♪ = 137,000137 ♪ = 137,000137 ♪ = 137,000137 ♪ = 140,000137

190 ♪ = 135,000137 ♪ = 130,000137 ♪ = 135,0001

193 ♪ = 140,000137

195 $\text{♩} = 100,0000000137$ $\text{♩} = 120,0000000$

6

6

197 $\text{♩} = 110,0000000537,000252$ $\text{♩} = 120,00000000137$ $\text{♩} = 95,000,000137$

201

203

20

♩ = 130,000137 ♩ = 130,00029700000,00013

205

Vln.

Vla.

Vc.

208

♩ = 132,000137 ♩ = 134,000061 ♩ = 140,000137

Vln.

Vla.

Vc.

212

Vln.

Vla.

Vc.

214

♩ = 130,000137,000005,000000

Vln.

Vla.

Vc.

231 ♩ = 130,000137 ♩ = 132,000137 ♩ = 135,000137 ♩ = 136,000153 ♩ = 131,000198

Vln.
Vla.
Vc.

235 ♩ = 135,000137 ♩ = 130,000137

Vln.
Vla.
Vc.

237

Vln.
Vla.
Vc.

239

Vln.
Vla.
Vc.

242

Vln. 6 3

Vla. 3

Vc. 3 6

Detailed description: This system covers measures 242 and 243. The Violin part (Vln.) starts with a whole rest in measure 242, followed by a sixteenth-note scale in measure 243 with a sixteenth rest and a triplet of eighth notes. The Viola part (Vla.) has a triplet of eighth notes in measure 242 and a half note in measure 243. The Violoncello part (Vc.) features a triplet of eighth notes in measure 242 and a sixteenth-note scale in measure 243.

244

Vln. 3

Vla. 6 6 3

Vc. 6 3

Detailed description: This system covers measures 244 and 245. The Violin part (Vln.) has a sixteenth-note scale in measure 244 and a sixteenth-note scale with a triplet of eighth notes in measure 245. The Viola part (Vla.) has a sixteenth-note scale in measure 244 and a sixteenth-note scale with a triplet of eighth notes in measure 245. The Violoncello part (Vc.) has a sixteenth-note scale in measure 244 and a sixteenth-note scale in measure 245.

246

Vln. 6 6 3

Vla. 6 3

Vc. 6 3

♩ = 116,000,000 242,000,076

Detailed description: This system covers measures 246 and 247. The Violin part (Vln.) has a sixteenth-note scale in measure 246 and a sixteenth-note scale with a triplet of eighth notes in measure 247. The Viola part (Vla.) has a half note in measure 246 and a sixteenth-note scale in measure 247. The Violoncello part (Vc.) has a half note in measure 246 and a sixteenth-note scale in measure 247. A tempo marking is present: ♩ = 116,000,000 242,000,076.

248

Vln.

Vla.

Vc.

Detailed description: This system covers measures 248 and 249. The Violin part (Vln.) has a whole rest in measure 248 and a sixteenth-note scale in measure 249. The Viola part (Vla.) has a sixteenth-note scale in measure 248 and a sixteenth-note scale in measure 249. The Violoncello part (Vc.) has a sixteenth-note scale in measure 248 and a sixteenth-note scale in measure 249.

261 ♩ = 135,000030007624,00085

Vln.

Vla.

Vc.

263 ♩ = 112,000061 = 107100100069 = 95,9000050284,000000000

Vln.

Vla.

Vc.

Violin

♩ = 120,000000 ♩ = 250,000000000 ♩ = 130,000137 ♩ = 140,000137

6 ♩ = 130,000137 ♩ = 130,000137 ♩ = 10,00010,000

11 ♩ = 130,000137 ♩ = 10,00010,000

14 ♩ = 127,000252 ♩ = 120,000000 ♩ = 130,000137 ♩ = 95,00004137

19 ♩ = 125,0001,0701320140,000137 ♩ = 125,0001,0701320140,000137

23 ♩ = 120,000000137 ♩ = 130,000137 ♩ = 130,000137 ♩ = 130,000137

27 ♩ = 132,000137 ♩ = 134,000000198 ♩ = 130,000137

32 ♩ = 140,000137

35

38 ♩ = 120,000000 ♩ = 108,000000 ♩ = 105,000137

Violin

41 $\text{♩} = 130,000137$ $\text{♩} = 130,000137$

45 $\text{♩} = 132,000137$ $\text{♩} = 130,000137$ $\text{♩} = 132,000137$ $\text{♩} = 135,000137$

49 $\text{♩} = 130,000137$ $\text{♩} = 120,000000$ $\text{♩} = 142,000076$

54

57

61

65

68 $\text{♩} = 115,000000$ $\text{♩} = 140,000137$

71

74 $\text{♩} = 130,000137$ $\text{♩} = 130,000137$

Violin

77 $\text{♩} = 130,350,000137$ $\text{♩} = 137,000,000137$ $\text{♩} = 134,000,000137$

82 $\text{♩} = 130,000,000244 = 137,000,000137$

86 $\text{♩} = 130,000,000370 \oplus 0010,0$

89 $\text{♩} = 127,000252$ $\text{♩} = 120,000000$ $\text{♩} = 130,000137$ $\text{♩} = 95,000,000137$

93 $\text{♩} = 135,000137 = 130,000,000137$

96 $\text{♩} = 135,000137 = 130,000,000137$

99 $\text{♩} = 130,0002870 \oplus 0000,000137$

103 $\text{♩} = 132,000137$ $\text{♩} = 134,000,000198$ $\text{♩} = 130,000137$

108 $\text{♩} = 140,000137$

111

V.S.

152 ♩ = 110,000,000 137 ♩ = 120,000,000 107 ♩ = 120,000,000 000 ♩ = 140,000 137

157

161

165

170

173

176

♩ = 120,000,000,000 107 ♩ = 130,000 137

180

♩ = 130,000 137 ♩ = 133,000 244 ♩ = 135,000 137

183

♩ = 130,000 137 ♩ = 127,000 200 107 ♩ = 122,000 069

Violin

187 $\text{♩} = 721,000,000 \text{ } 137 \text{ } 137,000,000 \text{ } 137 \text{ } 140,000,137$ $\text{♩} = 135,00013$

192 $\text{♩} = 130,000137 \text{ } \text{♩} = 130,000137$ $\text{♩} = 100,000,000137$

196 $\text{♩} = 130,000000 \text{ } \text{♩} = 110,000,000 \text{ } \text{♩} = 127,000252$ $\text{♩} = 120,000,000137$

200 $\text{♩} = 95,000,000137$

204 $\text{♩} = 130,000,000137 \text{ } \text{♩} = 130,000,000137$

208 $\text{♩} = 132,000137$ $\text{♩} = 134,000061$ $\text{♩} = 140,000137$

212

214 $\text{♩} = 130,000137 \text{ } \text{♩} = 130,000,000,000,000137$

218 $\text{♩} = 130,000,000137$ $\text{♩} = 130,000137$ $\text{♩} = 132,000,000244$

223 $\text{♩} = 120,000000 \text{ } \text{♩} = 120,000,000,000 \text{ } \text{♩} = 132,000,000137$ $\text{♩} = 130,000,000137$

Violin

227 $\text{♩} = 125,000000$ $\text{♩} = 126,000000$ $\text{♩} = 128,000000$ $\text{♩} = 130,000000$

232 $\text{♩} = 132,000000$ $\text{♩} = 135,000137$ $\text{♩} = 136,000153$ $\text{♩} = 135,000000$ $\text{♩} = 133,000000$ $\text{♩} = 137,000000$

236

239

243

246 $\text{♩} = 116,000000$ $\text{♩} = 119,000000$ $\text{♩} = 120,000076$

249 $\text{♩} = 137,000061$ $\text{♩} = 140,000000$

252 $\text{♩} = 137,000061$ $\text{♩} = 138,000198$ $\text{♩} = 139,000214$

255 $\text{♩} = 140,000137$ $\text{♩} = 120,000000$ $\text{♩} = 30,000000$ $\text{♩} = 120,000000$ $\text{♩} = 107,000137$ $\text{♩} = 120,000000$

259 $\text{♩} = 110,000000$ $\text{♩} = 107,000137$ $\text{♩} = 135,000137$ $\text{♩} = 140,000137$

V.S.

Viola

♩ = 120,000000 ♩ = 250,000000 ♩ = 130,000137 ♩ = 140,000137

7 ♩ = 130,000137 ♩ = 137,000010137

12 ♩ = 130,000137 ♩ = 127,0000252 ♩ = 120,000000

16 ♩ = 130,000137 ♩ = 95,00000137

19 ♩ = 135,000137 ♩ = 130,000137 ♩ = 140,000137

21 ♩ = 135,000137 ♩ = 130,000137

23 ♩ = 120,00000137

25 ♩ = 130,000137 ♩ = 120,00000137

28 ♩ = 132,000137 ♩ = 134,00000198 ♩ = 130,000137

32 ♩ = 140,000137

V.S.

141

143

$\text{♩} = 115, 0010, 0101, 0200137$

145

147

150

$\text{♩} = 130, 001207, 000100, 001070, 001132, 000000$

153

$\text{♩} = 110, 001127, 000100, 000300, 000000, 000000, 000137$

158

161

164



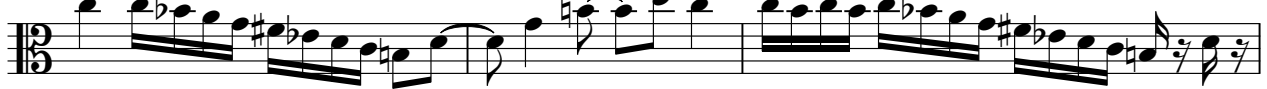
168



171



174



177

♩ = 120,00000000107 ♯ = 130,000153

♩ = 130,00013



182

♩ = 133,000244 ♩ = 135,000137

♩ = 130,000137 ♯ = 127,000107 ♩ = 122,00006



187

♩ = 72,000000137 ♯ = 137,000000000

♩ = 135,00013



192

♩ = 130,000137 ♩ = 135,000137

♩ = 100,000000137



196

♩ = 130,000000 = 110,00000000527,000252

♩ = 120,00000000137



200

♩ = 95,0000006137



203



205

♩ = 130,000137 ♩ = 130,000137,000000,000137



208

♩ = 132,000137 ♩ = 134,000061 ♩ = 140,000137

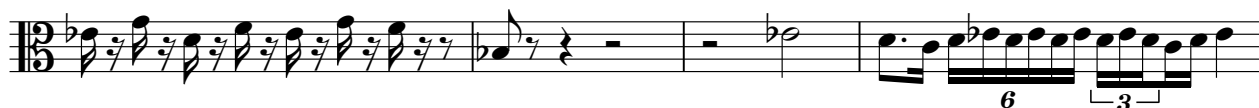


212



215

♩ = 130,000137,000005,000005,000137 ♩ = 130,000137 = 132,0



219

♩ = 130,000137 ♩ = 132,000,000244



223

♩ = 120,000000 ♩ = 120,000000 ♩ = 132,000137 ♩ = 130,000137



227

♩ = 125,000000 ♩ = 126,000000 ♩ = 128,000000 ♩ = 130,000137



232

♩ = 132,000137 ♩ = 135,000137,000153 ♩ = 135,000137,000198 ♩ = 135,000137,000137 = 140,



236



V.S.

240

244

2

Violoncello

41 $\text{♩} = 130,000137 = 135,000137$ $\text{♩} = 130,000137$

45 $\text{♩} = 132,000,000244$ $\text{♩} = 131,000,000137$ $\text{♩} = 135,000137$

50 $\text{♩} = 130,00013$

56 $\text{♩} = 120,000,000076$

59

63

66

69 $\text{♩} = 115,000,0002140,000137$

71

73

Violoncello

75

♩ = 130,000137

78

♩ = 137,000137

83

♩ = 130,000137

87

♩ = 130,000137 ♩ = 120,000000

91

♩ = 130,000137 ♩ = 95,4000137 ♩ = 135,000137

95

♩ = 130,000137 ♩ = 135,000137

100

♩ = 130,000137 ♩ = 132,000137

104

♩ = 134,000198 ♩ = 130,000137

108

♩ = 140,000137

111

V.S.

Violoncello

149

$\text{♩} = 130,000,000,000,000$

152 $\text{♩} = 110,000,000,000,000$ 137 $\text{♩} = 120,000,000,000,000$ 107 $\text{♩} = 120,000,000,000,000$ 130,400,000,000 137

157

162

167

170

173

175

177

$\text{♩} = 120,000,000,000,000$ 137 $\text{♩} = 130,000,000,000,000$ 153

$\text{♩} = 130,000,000,000,000$ 13

182 $\text{♩} = 133,000,000,000,000$ 137

$\text{♩} = 130,000,000,000,000$ 137 $\text{♩} = 120,000,000,000,000$ 107 $\text{♩} = 122,000,000,000,000$ 69 $\text{♩} = 120,000,000,000,000$

V.S.

Violoncello

228 $\text{♩} = 125,000,000$ $\text{♩} = 126,000,000$ $\text{♩} = 130,000,137$ $\text{♩} = 132,000,000$ $\text{♩} = 136,000,000$

234 $\text{♩} = 131,000,000$ $\text{♩} = 130,000,137$

239

243

245 $\text{♩} = 139,000,000$ $\text{♩} = 140,000,076$

248

250 $\text{♩} = 137,000,061$ $\text{♩} = 140,000,13$

252 $\text{♩} = 137,000,061$

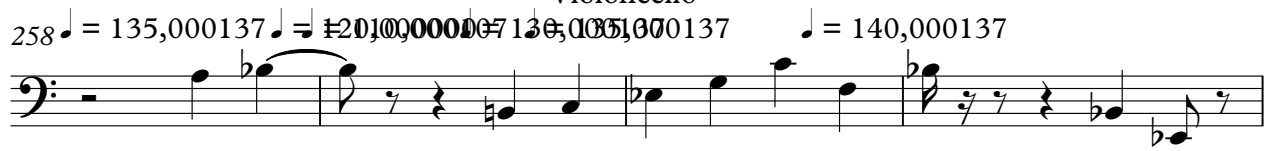
254 $\text{♩} = 138,000,198$ $\text{♩} = 139,000,214$

255 $\text{♩} = 140,000,137$ $\text{♩} = 120,000,000$ $\text{♩} = 30,000,000$ $\text{♩} = 0,000,000$ $\text{♩} = 0,000,000$

8

Violoncello

258 ♩ = 135,000137 ♩ = 140,000137



262 ♩ = 135,000137 ♩ = 140,000137

