

Mozart, Wolfgang Amadeus - Concerto for Clarinet in Bb

♩ = 54,000004

Mozart Clarinet

Concerto

K622-b-Adagio

5

Mozart Clarinet

Concerto

K622-b-Adagio

9

Mozart Clarinet

Concerto

K622-b-Adagio

13

Concerto

K622-b-Adagio

17

Mozart Clarinet

Concerto

K622-b-Adagio

21

Mozart Clarinet

Concerto

K622-b-Adagio

25

Mozart Clarinet

Concerto

K622-b-Adagio

28

Concerto

K622-b-Adagio

31

Concerto

K622-b-Adagio

This musical score page contains three systems of music. Each system consists of three staves: the top staff is for the Mozart Clarinet, the middle staff is for the Concerto, and the bottom staff is for K622-b-Adagio. The first system covers measures 17 to 20, the second system covers measures 21 to 24, and the third system covers measures 25 to 31. The Mozart Clarinet part features melodic lines with various intervals and rests. The Concerto part provides harmonic support with chords and moving lines. The K622-b-Adagio part consists of sustained chords and arpeggiated figures. Measure numbers 17, 21, 25, 28, and 31 are indicated at the beginning of their respective systems.

33

Mozart Clarinet

Concerto

K622-b-Adagio

36

Mozart Clarinet

Concerto

K622-b-Adagio

39

Mozart Clarinet

Concerto

K622-b-Adagio

41

Mozart Clarinet

Concerto

K622-b-Adagio

43

Mozart Clarinet

Concerto

K622-b-Adagio



46

Mozart Clarinet

Concerto

K622-b-Adagio

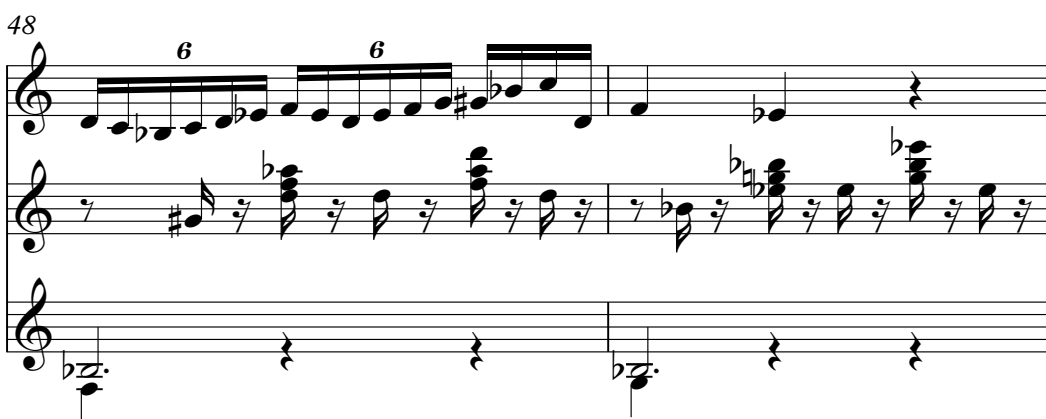


48

Mozart Clarinet

Concerto

K622-b-Adagio



50

Mozart Clarinet

Concerto

K622-b-Adagio



53

Mozart Clarinet

Concerto

K622-b-Adagio

54

Mozart Clarinet

Concerto

K622-b-Adagio

55

Mozart Clarinet

Concerto

K622-b-Adagio

58

Mozart Clarinet

Concerto

K622-b-Adagio

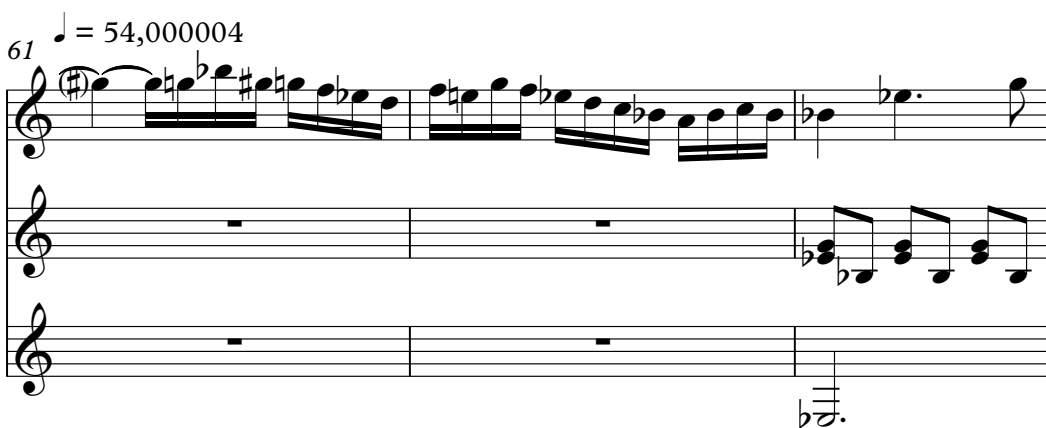
$\text{♩} = 112,000061$

61 $\text{♩} = 54,000004$

Mozart Clarinet

Concerto

K622-b-Adagio



64

Mozart Clarinet

Concerto

K622-b-Adagio



68

Mozart Clarinet

Concerto

K622-b-Adagio



72

Mozart Clarinet

Concerto

K622-b-Adagio



76

Mozart Clarinet

Concerto

K622-b-Adagio

80

Concerto

K622-b-Adagio

83

Concerto

K622-b-Adagio

86

Mozart Clarinet

Concerto

K622-b-Adagio

89

Mozart Clarinet

Concerto

K622-b-Adagio

This musical score page contains three systems of music. Each system consists of three staves: the top staff is for the Mozart Clarinet, the middle for the Concerto, and the bottom for K622-b-Adagio. The first system covers measures 76-79, the second covers measures 80-83, and the third covers measures 84-89. The Mozart Clarinet part features melodic lines with various ornaments and a sextuplet in measure 89. The Concerto part provides harmonic support with chords and moving lines. The K622-b-Adagio part consists of a slower, more sustained accompaniment. Measure numbers 76, 80, 83, 86, and 89 are indicated at the start of their respective systems. The key signature has one flat, and the time signature is common time.

Mozart Clarinet

Concerto

K622-b-Adagio

91

91

Mozart Clarinet

Concerto

K622-b-Adagio

94

94

Mozart Clarinet

Concerto

K622-b-Adagio

95

95

Mozart Clarinet

Concerto

K622-b-Adagio

96

96

Mozart Clarinet

99

♩ = 50,000000

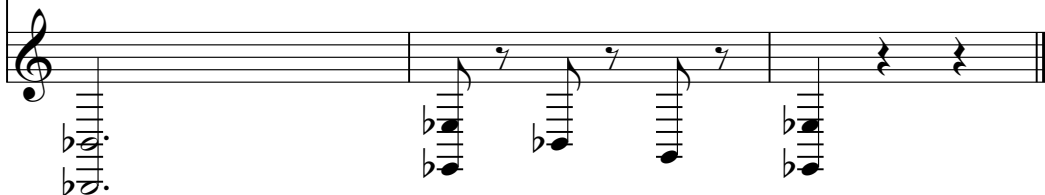
♩ = 45,999992



Concerto



K622-b-Adagio



Mozart Clarinet

Mozart, Wolfgang Amadeus - Concerto for Clarinet in Bb

$\text{♩} = 54,000004$

8

21

34

39

43

47

51

54

56

$\text{♩} = 112,000061$

V.S.

♩ = 54,000004

61

66

73

79

89

92

95

97

♩ = 50,000000 ♩ = 45,999992

Concerto

Mozart, Wolfgang Amadeus - Concerto for Clarinet in Bb

♩ = 54,000004

6

11

17

22

27

31

34

39

42

V.S.

46

49

53

58

$\text{♩} = 112,000061$ $\text{♩} = 54,000004$

64

69

74

79

83

87



♩ = 54,000004

9

14

20

28

35

43

50

56

♩ = 112,000061 ♩ = 54,000004

2

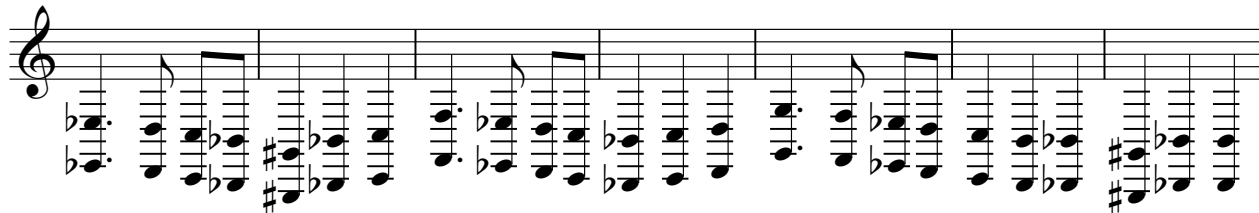
63



72



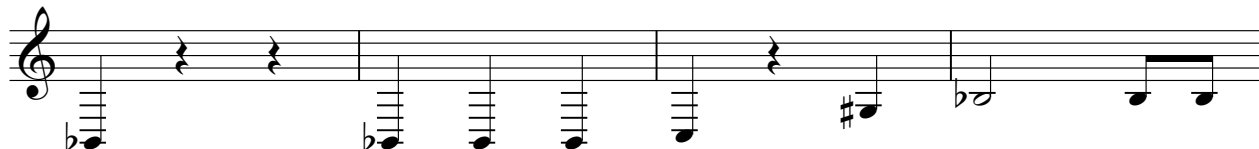
79



86



94



98

♩ = 50,000000

♩ = 45,999992

