

Mozart, Wolfgang Amadeus - Piano Sonata No. 8. in D

Mozart

K311-c-Rondo-Allegro

$\text{♩} = 72,000031$

Mozart

K311-c-Rondo-Allegro

5

Mozart

K311-c-Rondo-Allegro

8

Mozart

K311-c-Rondo-Allegro

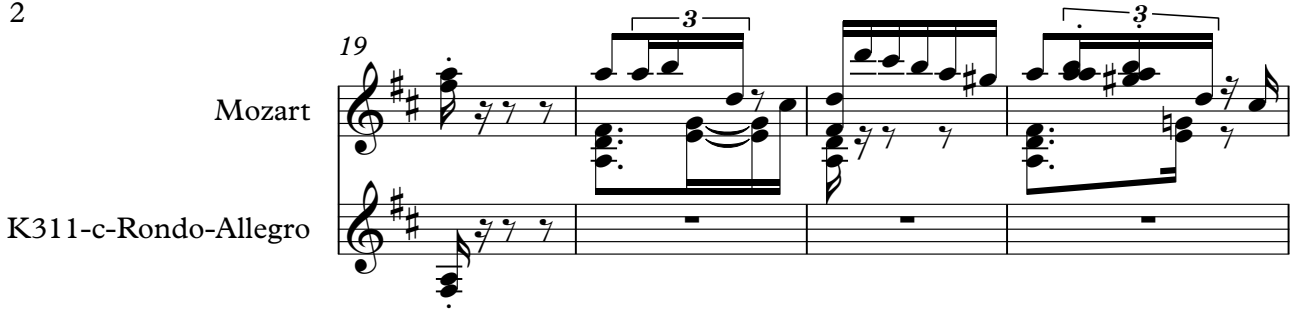
12

Mozart

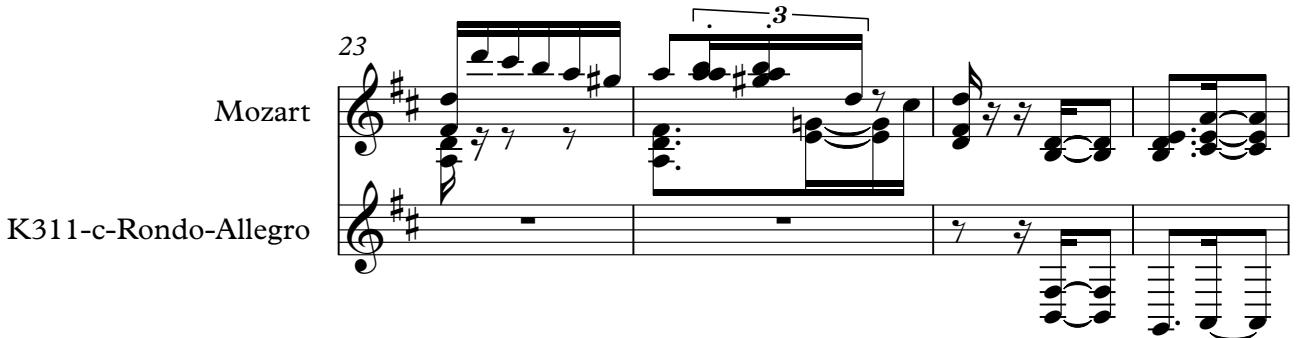
K311-c-Rondo-Allegro

16

Mozart  
K311-c-Rondo-Allegro



Mozart  
K311-c-Rondo-Allegro



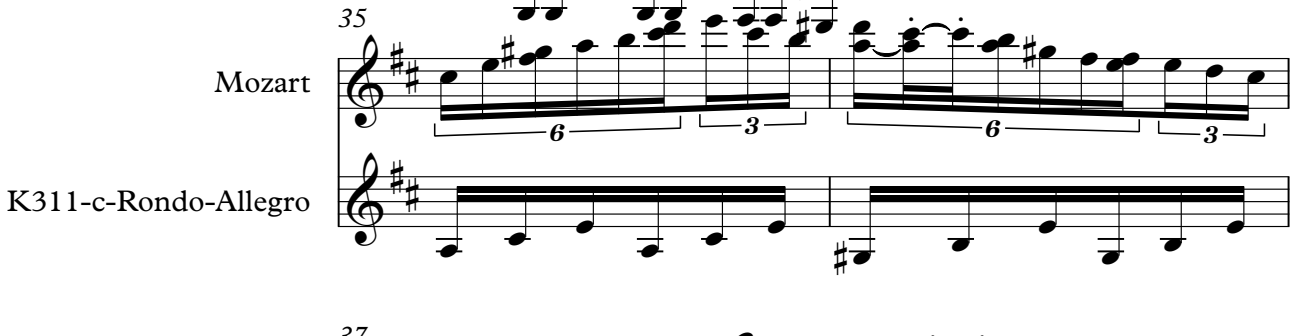
Mozart  
K311-c-Rondo-Allegro



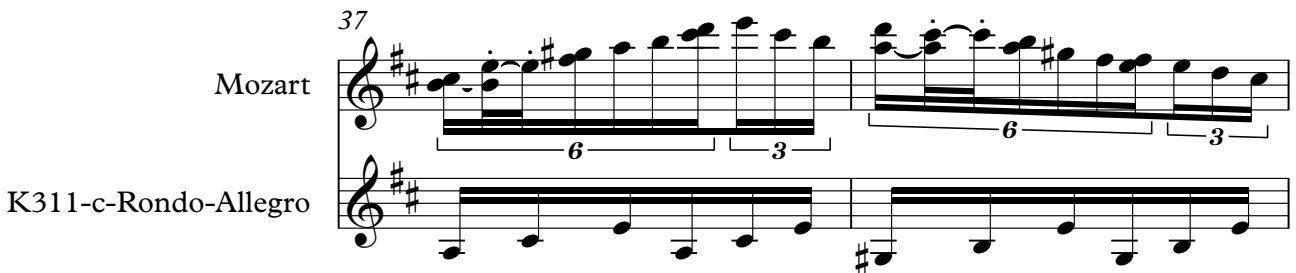
Mozart  
K311-c-Rondo-Allegro



Mozart  
K311-c-Rondo-Allegro



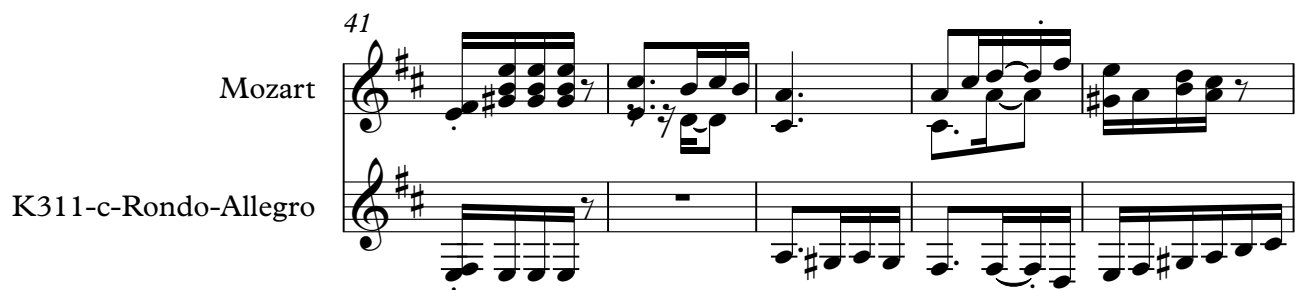
Mozart  
K311-c-Rondo-Allegro



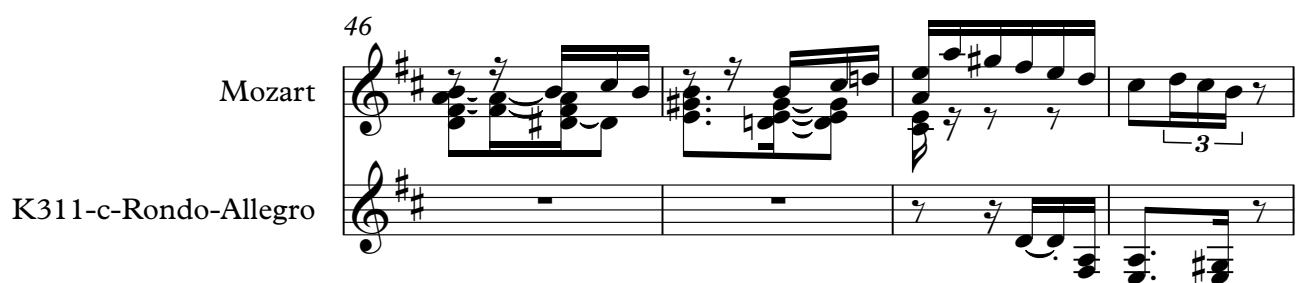
Mozart  
K311-c-Rondo-Allegro



Mozart  
K311-c-Rondo-Allegro



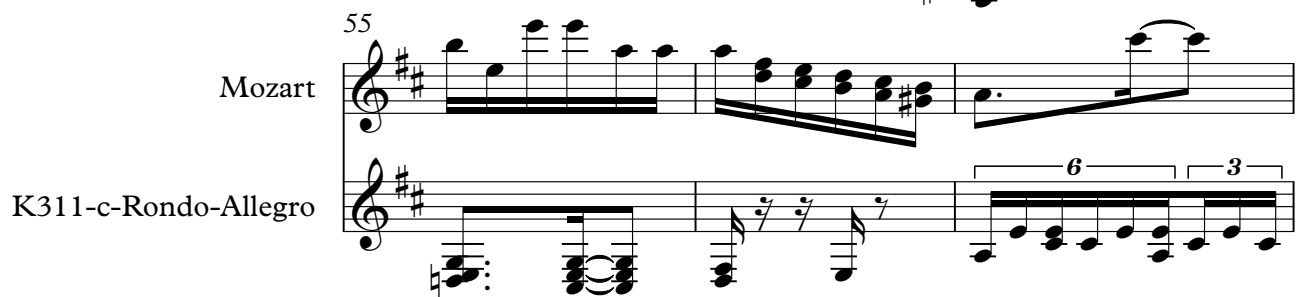
Mozart  
K311-c-Rondo-Allegro



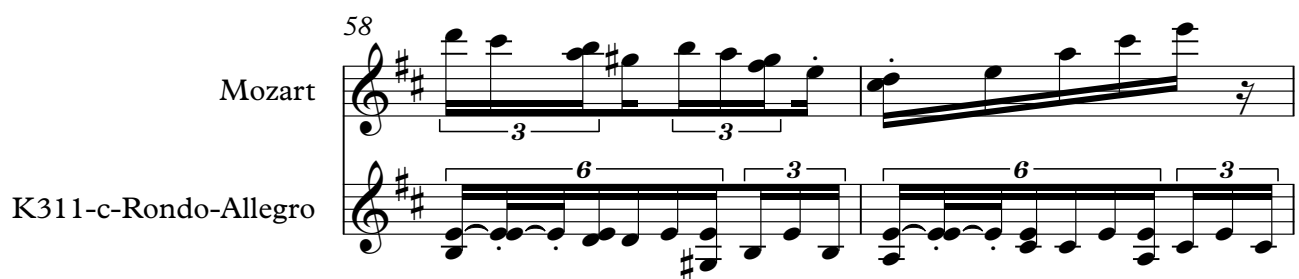
Mozart  
K311-c-Rondo-Allegro



Mozart  
K311-c-Rondo-Allegro



Mozart  
K311-c-Rondo-Allegro



Mozart  
K311-c-Rondo-Allegro

Mozart  
K311-c-Rondo-Allegro

Mozart  
K311-c-Rondo-Allegro

Mozart  
K311-c-Rondo-Allegro

Mozart  
K311-c-Rondo-Allegro

Mozart  
K311-c-Rondo-Allegro

60

63

66

68

71

75

Mozart  
K311-c-Rondo-Allegro

Mozart  
K311-c-Rondo-Allegro

Mozart  
K311-c-Rondo-Allegro

Mozart  
K311-c-Rondo-Allegro

Mozart  
K311-c-Rondo-Allegro

Mozart  
K311-c-Rondo-Allegro

Mozart  
K311-c-Rondo-Allegro

Mozart  
K311-c-Rondo-Allegro

Mozart  
K311-c-Rondo-Allegro

Mozart  
K311-c-Rondo-Allegro

Mozart  
K311-c-Rondo-Allegro

Mozart  
K311-c-Rondo-Allegro

Mozart  
K311-c-Rondo-Allegro

Mozart  
K311-c-Rondo-Allegro

Mozart  
K311-c-Rondo-Allegro

Mozart  
K311-c-Rondo-Allegro

Mozart  
K311-c-Rondo-Allegro

Mozart  
K311-c-Rondo-Allegro

Mozart  
K311-c-Rondo-Allegro

Mozart  
K311-c-Rondo-Allegro

Mozart  
K311-c-Rondo-Allegro

Mozart  
K311-c-Rondo-Allegro

Mozart  
K311-c-Rondo-Allegro

Mozart  
K311-c-Rondo-Allegro

Mozart  
K311-c-Rondo-Allegro

138

Mozart  
K311-c-Rondo-Allegro

141

Mozart  
K311-c-Rondo-Allegro

144

Mozart  
K311-c-Rondo-Allegro

147

Mozart  
K311-c-Rondo-Allegro

150

Mozart  
K311-c-Rondo-Allegro

153

Mozart  
K311-c-Rondo-Allegro



Mozart  
K311-c-Rondo-Allegro

Mozart  
Mozart

Mozart  
K311-c-Rondo-Allegro

Mozart  
K311-c-Rondo-Allegro

Mozart  
K311-c-Rondo-Allegro

Mozart  
K311-c-Rondo-Allegro

Mozart

Mozart

$\text{♩} = 72,000031$

Mozart

Mozart

K311-c-Rondo-Allegro

Mozart

K311-c-Rondo-Allegro

Mozart

K311-c-Rondo-Allegro

Mozart

K311-c-Rondo-Allegro

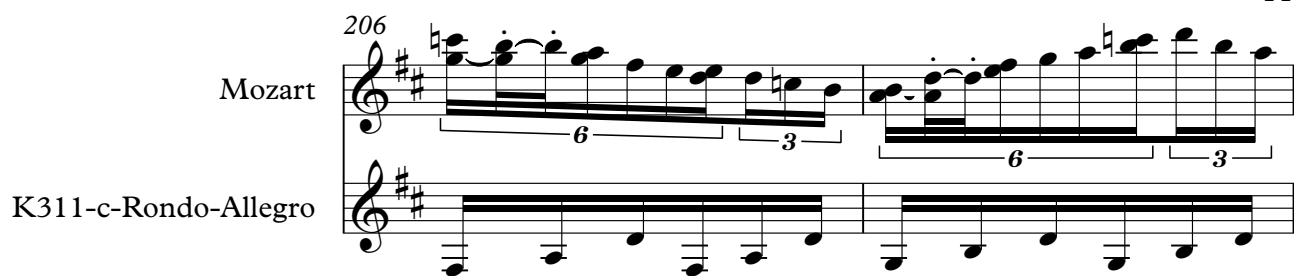
Mozart

K311-c-Rondo-Allegro

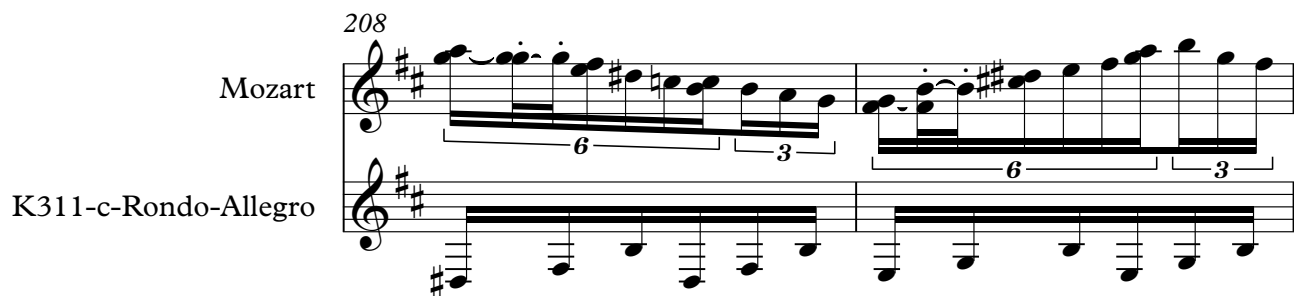
Mozart

K311-c-Rondo-Allegro

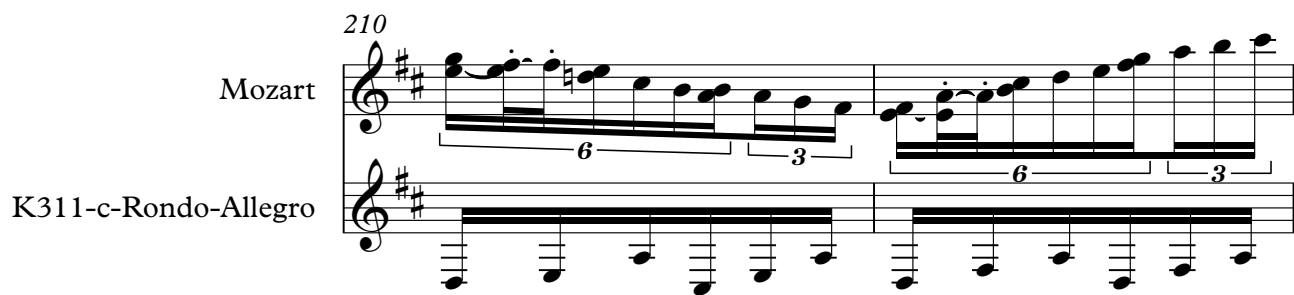
Mozart  
K311-c-Rondo-Allegro



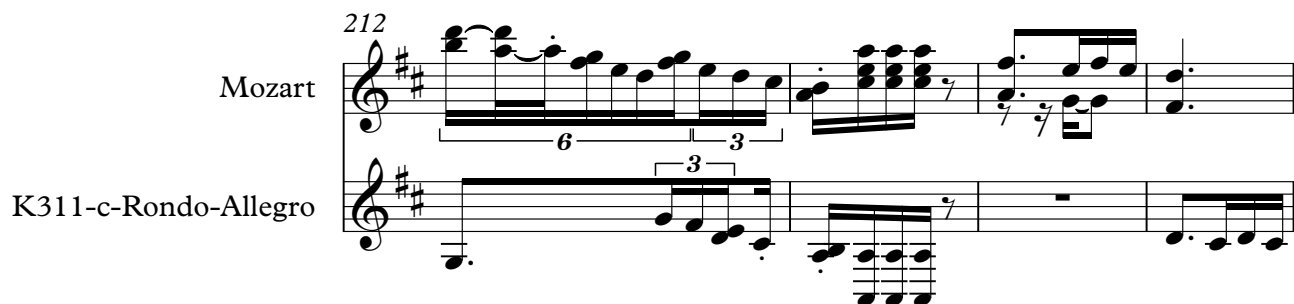
Mozart  
K311-c-Rondo-Allegro



Mozart  
K311-c-Rondo-Allegro



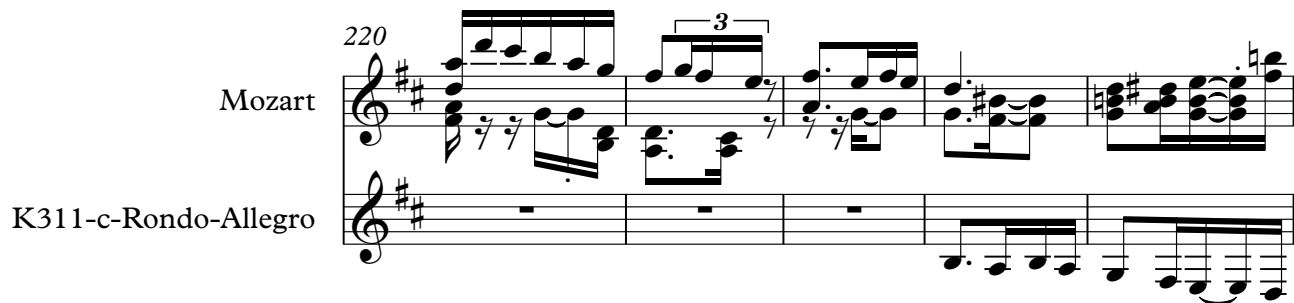
Mozart  
K311-c-Rondo-Allegro



Mozart  
K311-c-Rondo-Allegro



Mozart  
K311-c-Rondo-Allegro



Mozart  
K311-c-Rondo-Allegro

Mozart  
K311-c-Rondo-Allegro

Mozart  
K311-c-Rondo-Allegro

Mozart  
K311-c-Rondo-Allegro

Mozart  
K311-c-Rondo-Allegro

Mozart  
K311-c-Rondo-Allegro

Mozart  
K311-c-Rondo-Allegro

241

Mozart  
K311-c-Rondo-Allegro

244

Mozart  
K311-c-Rondo-Allegro

248

Mozart  
K311-c-Rondo-Allegro

250

Mozart  
K311-c-Rondo-Allegro

252

Mozart  
K311-c-Rondo-Allegro

257

Mozart  
K311-c-Rondo-Allegro

261

Mozart  
K311-c-Rondo-Allegro

263

Mozart  
K311-c-Rondo-Allegro

266

Mozart  
K311-c-Rondo-Allegro

270

Mozart  
K311-c-Rondo-Allegro

274

$\text{♩} = 72,000031$

7

12

16

21

26

32

36

39

44

V.S.

Musical score for Mozart's piece, measures 50-101. The score is written in treble clef with a key signature of one sharp (F#) and a common time signature (C). The piece features a variety of rhythmic patterns and articulations, including slurs, accents, and dynamic markings.

Measures 50-56: The first system contains measures 50 through 56. It begins with a series of eighth notes, followed by a half note, and then a series of eighth notes with slurs. Measure 56 ends with a fermata.

Measures 57-61: The second system contains measures 57 through 61. It features a series of eighth notes with slurs, followed by a half note, and then a series of eighth notes with slurs. Measure 61 ends with a fermata.

Measures 62-67: The third system contains measures 62 through 67. It begins with a series of eighth notes with slurs, followed by a half note, and then a series of eighth notes with slurs. Measure 67 ends with a fermata.

Measures 68-72: The fourth system contains measures 68 through 72. It features a series of eighth notes with slurs, followed by a half note, and then a series of eighth notes with slurs. Measure 72 ends with a fermata.

Measures 73-78: The fifth system contains measures 73 through 78. It begins with a series of eighth notes with slurs, followed by a half note, and then a series of eighth notes with slurs. Measure 78 ends with a fermata.

Measures 79-84: The sixth system contains measures 79 through 84. It features a series of eighth notes with slurs, followed by a half note, and then a series of eighth notes with slurs. Measure 84 ends with a fermata.

Measures 85-90: The seventh system contains measures 85 through 90. It begins with a series of eighth notes with slurs, followed by a half note, and then a series of eighth notes with slurs. Measure 90 ends with a fermata.

Measures 91-95: The eighth system contains measures 91 through 95. It features a series of eighth notes with slurs, followed by a half note, and then a series of eighth notes with slurs. Measure 95 ends with a fermata.

Measures 96-100: The ninth system contains measures 96 through 100. It begins with a series of eighth notes with slurs, followed by a half note, and then a series of eighth notes with slurs. Measure 100 ends with a fermata.

Measures 101-105: The tenth system contains measures 101 through 105. It features a series of eighth notes with slurs, followed by a half note, and then a series of eighth notes with slurs. Measure 105 ends with a fermata.





151

156

161

165

170

174

$\text{♩} = 43,000027$

178

$\text{♩} = 90,000092$        $\text{♩} = 36,000015$

181

$\text{♩} = 72,000031$

186

191

196

202

206

209

212

218

224

230

236

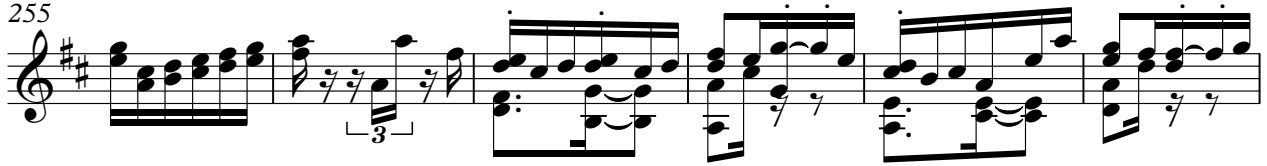
242

V.S.

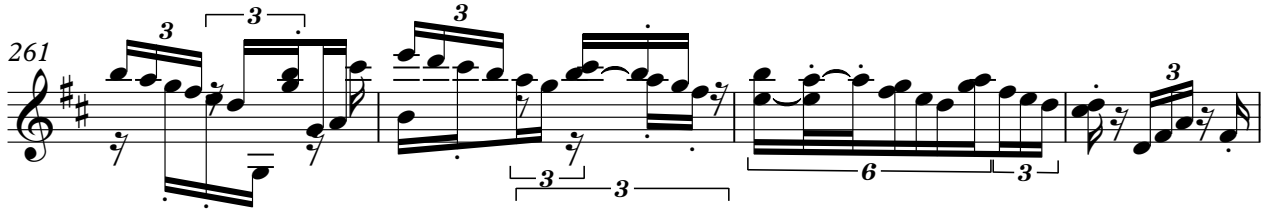
248



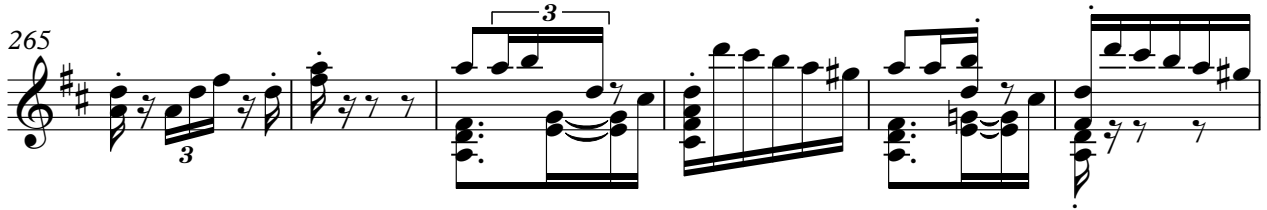
255



261



265



271



275



K311-c-Rondo-Allegro

Mozart, Wolfgang Amadeus - Piano Sonata No. 8. in D

♩ = 72,000031

4 3

13 3 3

20 5

32

38 3

45 2

54 6 3 6 3

59 6 3 6 3 3 3 2

65 6 3 6 3 6 3

68 6 3 6 3 2

Musical score for K311-c-Rondo-Allegro, measures 73-136. The score is written in treble clef with a key signature of two sharps (F# and C#). The music features a variety of rhythmic patterns, including eighth and sixteenth notes, and rests. Measure numbers are indicated at the beginning of each line: 73, 77, 80, 86, 96, 104, 111, 118, 131, and 136. The score includes several triplet markings (indicated by a '3' above a bracket) and a sextuplet marking (indicated by a '6' above a bracket). The music is characterized by its rhythmic complexity and the use of slurs and ties to connect notes across measures.

142

4

151

3 3

158

8

171

$\text{♩} = 43,000027 \quad \text{♩} = 90,000092 \quad \text{♩} = 36,000015 \quad \text{♩} = 72,000031$

4 2 4

186

194

201

208

3

213

5

Musical score for K311-c-Rondo-Allegro, measures 223-273. The score is written in treble clef with a key signature of two sharps (F# and C#). The piece is in 3/4 time. The notation includes various rhythmic patterns, including sixteenth and thirty-second notes, and rests. Fingerings are indicated by numbers 1-5 above or below notes. Ornaments (sharps) are placed above notes in measures 246-255. Measure numbers 223, 229, 232, 237, 240, 246, 250, 255, 264, and 273 are marked at the beginning of their respective staves. Brackets above the notes indicate groups of six (6) and three (3) notes. A double bar line with a repeat sign is used in measure 240. A fermata is present in measure 264. The score concludes with a double bar line in measure 273.