

Chaiikovsky, Peter - Serenade for Strings Op. 48. David Siu

$\text{♩} = 96,000000$   $\text{♩} = 68,000075$

Violin I  
Violin II  
Viola  
Cello  
Double bass

Detailed description: This block shows the first six measures of the score. The time signature is 3/8. The key signature has one flat (B-flat). The tempo markings at the top indicate a quarter note equals 96,000,000 units for the first measure and 68,000,075 units for the second measure. The Violin I part features a melodic line with eighth and sixteenth notes. The Violin II, Viola, Cello, and Double bass parts provide harmonic support with chords and moving lines.

7  $\text{♩} = 85,000000$

Violin I  
Violin II  
Viola  
Cello  
Double bass

Detailed description: This block shows measures 7 through 10. The tempo marking at the top indicates a quarter note equals 85,000,000 units. The Violin I part has a melodic line with some rests. The Violin II, Viola, Cello, and Double bass parts continue with their respective parts. The Cello and Double bass parts feature triplet markings in measures 8 and 9.

12

Violin I  
Violin II  
Viola  
Cello  
Double bass

This system contains measures 12 through 16. It features five staves: Violin I, Violin II, Viola, Cello, and Double bass. The music is in 3/4 time. Measures 12-15 show a steady progression of notes across all instruments. Measure 16 concludes with a complex chordal structure, including some grace notes and a final cadence.

♩ = 68,000076

17

Violin I  
Violin II  
Viola  
Cello

This system contains measures 17 through 21. It features four staves: Violin I, Violin II, Viola, and Cello. Measure 17 is dominated by a rapid, sixteenth-note run in the Violin I part. The other instruments provide harmonic support with sustained notes and slower-moving lines. Measures 18-21 continue with this texture, ending with a final chord in measure 21.

♩ = 64,058,000042 ♩ = 68,000076

22

Violin I  
Violin II  
Viola  
Cello

This system contains measures 22 through 26. It features four staves: Violin I, Violin II, Viola, and Cello. Measure 22 begins with a new tempo marking. The Violin I part has a melodic line with some slurs. The other instruments continue their supporting roles. Measures 23-26 show further development of the musical themes, ending with a final chord in measure 26.

28  $\text{♩} = 61,000000$   $\text{♩} = 71,000038$   $\text{♩} = 71,000000$

Violin I

Violin II

Viola

Cello

Double bass

34  $\text{♩} = 66,000000$   $\text{♩} = 52,000008$   $\text{♩} = 61,000000$   $\text{♩} = 61,000000$

Violin I

Violin II

Viola

Cello

Double bass

40  $\text{♩} = 113,000$

Violin I  
Violin II  
Viola  
Cello  
Double bass

This musical score block covers measures 40 to 44. It features five staves: Violin I, Violin II, Viola, Cello, and Double bass. The music is in 3/4 time with a tempo of 113,000. The key signature has one sharp (F#). The score shows a variety of rhythmic patterns, including eighth and sixteenth notes, and rests. The strings play a complex, layered texture.

~~$\text{♩} = 117,000$~~  45

Violin I  
Violin II  
Viola  
Cello  
Double bass

This musical score block covers measures 45 to 49. It features five staves: Violin I, Violin II, Viola, Cello, and Double bass. The music continues in 3/4 time with a tempo of 117,000. The key signature has one sharp (F#). The score shows a variety of rhythmic patterns, including eighth and sixteenth notes, and rests. The strings play a complex, layered texture.

50

Violin I

Violin II

Viola

Cello

Double bass

Detailed description: This system of music covers measures 50 through 53. It features five staves: Violin I, Violin II, Viola, Cello, and Double bass. The key signature has one flat (B-flat). The time signature is 3/4. Measure 50 starts with a treble clef and a 3/4 time signature. The Violin I part has a melodic line with eighth notes and a half note. The Violin II part has a similar melodic line. The Viola and Cello parts have a rhythmic accompaniment of eighth notes. The Double bass part has a bass line with eighth notes and a half note. The system ends with a double bar line at the end of measure 53.

♩ = 95 00054500031

54

Violin I

Violin II

Viola

Cello

Double bass

Detailed description: This system of music covers measures 54 through 56. It features five staves: Violin I, Violin II, Viola, Cello, and Double bass. The key signature has one flat (B-flat). The time signature is 3/4. Measure 54 starts with a treble clef and a 3/4 time signature. The Violin I part has a melodic line with eighth notes and a half note. The Violin II part has a similar melodic line. The Viola part has a rhythmic accompaniment of eighth notes. The Cello part has a bass line with eighth notes and a half note. The Double bass part has a bass line with eighth notes and a half note. The system ends with a double bar line at the end of measure 56.

57

Violin I  
Violin II  
Viola  
Cello  
Double bass

This musical score covers measures 57, 58, and 59. It is written for a string quartet with five staves: Violin I, Violin II, Viola, Cello, and Double bass. The music is in 3/4 time and features a key signature of one sharp (F#). In measure 57, Violin I has a whole note chord (F#4, A4) with a fermata. Violin II and Viola play a half note chord (F#3, A3). The Cello and Double bass play a rhythmic eighth-note pattern. Measures 58 and 59 continue the patterns, with Violin I playing a half note chord (F#4, A4) and Violin II and Viola playing a half note chord (F#3, A3).

60

Violin I  
Violin II  
Viola  
Cello  
Double bass

This musical score covers measures 60, 61, and 62. It is written for a string quartet with five staves: Violin I, Violin II, Viola, Cello, and Double bass. The music is in 3/4 time and features a key signature of one sharp (F#). In measure 60, Violin I plays a half note chord (F#4, A4). Violin II and Viola play a half note chord (F#3, A3). The Cello and Double bass play a rhythmic eighth-note pattern. Measures 61 and 62 continue the patterns, with Violin I playing a half note chord (F#4, A4) and Violin II and Viola playing a half note chord (F#3, A3).

62 7

Violin I  
Violin II  
Viola  
Cello  
Double bass

This musical score covers measures 62, 63, and 64. It is written for a string quartet with five staves: Violin I, Violin II, Viola, Cello, and Double bass. The music is in 3/4 time and features a variety of rhythmic patterns and melodic lines. Measure 62 shows the beginning of a phrase with rests in the upper strings. Measure 63 continues the development of the theme. Measure 64 concludes the section with sustained notes in the upper strings and a final cadence in the lower strings.

64

Violin I  
Violin II  
Viola  
Cello  
Double bass

This musical score covers measures 64, 65, and 66. It continues the string quartet arrangement. Measure 64 starts with a melodic entry in the Violin I part. Measure 65 shows the other instruments joining in. Measure 66 features a more active Cello and Double bass part, with the upper strings providing harmonic support. The score concludes with a final measure in measure 66.

66

Violin I

Violin II

Viola

Cello

Double bass

Detailed description: This system of musical notation covers measures 66, 67, and 68. The score is for five instruments: Violin I, Violin II, Viola, Cello, and Double bass. The key signature has one flat (B-flat), and the time signature is 3/8. Measure 66 shows the Violin I and II parts with chords and single notes, while the Viola and Cello play a rhythmic eighth-note pattern. The Double bass part is mostly rests. Measures 67 and 68 continue the instrumental textures with various chordal and melodic developments.

69

Violin I

Violin II

Viola

Cello

Double bass

Detailed description: This system of musical notation covers measures 69, 70, and 71. The instrumentation remains the same. Measure 69 features more active parts for Violin I and II, with some sixteenth-note runs. The Viola and Cello continue their rhythmic patterns. Measure 70 shows a continuation of these textures. Measure 71 concludes the system with sustained chords in the Violin and Viola parts and rhythmic patterns in the Cello and Double bass.



72

Violin I

Violin II

Viola

Cello

Double bass

76

Violin I

Violin II

Viola

Cello

Double bass

79

Violin I

Violin II

Viola

Cello

Double bass

Detailed description: This system of musical notation covers measures 79 and 80. It features five staves: Violin I, Violin II, Viola, Cello, and Double bass. The key signature has one sharp (F#) and the time signature is 3/8. In measure 79, Violin I has a whole note G4, Violin II has a quarter note G4, Viola has a quarter note G4, Cello has a quarter note G2, and Double bass has a whole note G2. In measure 80, Violin I has a whole note G4, Violin II has a quarter note G4, Viola has a quarter note G4, Cello has a quarter note G2, and Double bass has a whole note G2. The notation includes various accidentals and rests.

81

Violin I

Violin II

Viola

Cello

Double bass

Detailed description: This system of musical notation covers measures 81 and 82. It features five staves: Violin I, Violin II, Viola, Cello, and Double bass. The key signature has one sharp (F#) and the time signature is 3/8. In measure 81, Violin I has a quarter note G4, Violin II has a quarter note G4, Viola has a quarter note G4, Cello has a quarter note G2, and Double bass has a quarter note G2. In measure 82, Violin I has a quarter note G4, Violin II has a quarter note G4, Viola has a quarter note G4, Cello has a quarter note G2, and Double bass has a quarter note G2. The notation includes various accidentals and rests.

83

Violin I

Violin II

Viola

Cello

Double bass

Detailed description: This system contains measures 83 and 84. The music is in 3/4 time with a key signature of one sharp (F#). Measure 83 features a half rest in Violin I, while Violin II, Viola, and Cello play eighth-note patterns. A double bass line is present with a half note. Measure 84 continues the patterns, with a long slur over the Violin I staff.

85

Violin I

Violin II

Viola

Cello

Double bass

Detailed description: This system contains measures 85 and 86. Measure 85 shows a more active Violin I part with eighth-note runs, while Violin II, Viola, and Cello continue with eighth-note accompaniment. Measure 86 continues these patterns, with a double bass line that is mostly silent.

87

Violin I

Violin II

Viola

Cello

Detailed description: This system contains measures 87 and 88. Measure 87 features a complex eighth-note pattern in Violin I, with Violin II, Viola, and Cello providing accompaniment. Measure 88 continues the intricate rhythmic textures across all parts.

89

Violin I

Violin II

Viola

Cello

Detailed description: This system contains measures 89 and 90. The key signature has one sharp (F#). The time signature is 3/8. Measure 89 shows a rhythmic pattern of eighth notes with various accidentals. Measure 90 continues this pattern with some rests and different note values.

91

$\text{♩} = 95,000145$   $\text{♩} = 115,000031$

Violin I

Violin II

Viola

Cello

Double bass

Detailed description: This system contains measures 91 and 92. Measure 91 features a complex rhythmic pattern with many beamed notes. Measure 92 shows a change in the rhythmic pattern, with some notes being longer. The key signature remains one sharp (F#).

93

Violin I

Viola

Cello

Double bass

Detailed description: This system contains measures 93 and 94. Measure 93 features a dense, fast-moving melodic line in the Violin I part. The Viola, Cello, and Double bass parts provide a harmonic and rhythmic foundation. Measure 94 continues the melodic development in the Violin I part.

95

Violin I  
Violin II  
Viola  
Cello  
Double bass

This system contains measures 95 and 96. The key signature has one sharp (F#). The time signature is 3/8. In measure 95, Violin I plays a sixteenth-note melody, Viola plays a similar sixteenth-note line, and the Cello and Double bass play a bass line with eighth notes. In measure 96, Violin I continues with a sixteenth-note pattern, while Violin II, Viola, Cello, and Double bass play chords and rests.

97

Violin I  
Viola  
Cello  
Double bass

This system contains measures 97 and 98. In measure 97, Violin I plays a sixteenth-note melody, Viola plays a sixteenth-note line, and the Cello and Double bass play a bass line with eighth notes. In measure 98, Violin I continues with a sixteenth-note pattern, while Viola, Cello, and Double bass play chords and eighth notes.

99

Violin I  
Violin II  
Viola  
Cello  
Double bass

This system contains measures 99 and 100. In measure 99, Violin I plays a sixteenth-note melody, Violin II is silent, Viola plays a sixteenth-note line, and the Cello and Double bass play a bass line with eighth notes. In measure 100, Violin I plays a sixteenth-note pattern, Violin II plays a sixteenth-note line, Viola plays a sixteenth-note line, Cello plays eighth notes, and Double bass plays a bass line with eighth notes and a long note in the second half.

101

Violin I

Violin II

Viola

Cello

Double bass

Detailed description: This system of musical notation covers measures 101 and 102. It features five staves: Violin I, Violin II, Viola, Cello, and Double bass. The key signature is one sharp (F#) and the time signature is 3/8. In measure 101, Violin I plays a series of eighth notes with slurs and accents, while Violin II, Viola, and Cello play steady eighth-note patterns. The Double bass provides a simple accompaniment with quarter notes. Measure 102 continues these patterns, with some notes in the upper staves marked with slurs and accents.

103

Violin I

Violin II

Viola

Cello

Double bass

Detailed description: This system of musical notation covers measures 103 and 104. It features five staves: Violin I, Violin II, Viola, Cello, and Double bass. The key signature is one sharp (F#) and the time signature is 3/8. In measure 103, Violin I plays a series of eighth notes with slurs and accents, while Violin II, Viola, and Cello play steady eighth-note patterns. The Double bass provides a simple accompaniment with quarter notes. Measure 104 continues these patterns, with some notes in the upper staves marked with slurs and accents.

105 15

Violin I  
Violin II  
Viola  
Cello  
Double bass

This musical system covers measures 105 and 106. The key signature is one sharp (F#) and the time signature is 3/8. The Violin I part features a complex rhythmic pattern with many sixteenth notes and rests. The Violin II part plays a steady eighth-note accompaniment. The Viola part has a similar eighth-note accompaniment. The Cello and Double bass parts play a simple bass line with quarter notes and rests, with a long slur spanning across both measures.

107

Violin I  
Violin II  
Viola  
Cello  
Double bass

This musical system covers measures 107 and 108. The key signature is one sharp (F#) and the time signature is 3/8. The Violin I part has a melodic line with eighth notes and a phrase with a slur. The Violin II part has a rhythmic accompaniment with eighth notes and rests. The Viola part has a rhythmic accompaniment with eighth notes and rests. The Cello and Double bass parts have a rhythmic accompaniment with eighth notes and rests.

109

Violin I

Violin II

Viola

Cello

Double bass

Detailed description: This system of musical notation covers measures 109 and 110. The key signature is one sharp (F#) and the time signature is 3/8. In measure 109, Violin I plays a continuous eighth-note melody. Violin II, Viola, Cello, and Double bass play a rhythmic accompaniment of eighth notes. In measure 110, Violin I has a melodic phrase with a slur. Violin II, Viola, Cello, and Double bass continue their accompaniment.

111

Violin I

Violin II

Viola

Cello

Double bass

Detailed description: This system of musical notation covers measures 111 and 112. The key signature is one sharp (F#) and the time signature is 3/8. In measure 111, Violin I has a melodic phrase with a slur. Violin II, Viola, Cello, and Double bass play a rhythmic accompaniment of eighth notes. In measure 112, Violin I has a melodic phrase with a slur. Violin II, Viola, Cello, and Double bass continue their accompaniment.



113 17

Violin I

Violin II

Viola

Cello

Double bass

This musical score covers measures 113 to 17. It is written for five instruments: Violin I, Violin II, Viola, Cello, and Double bass. The key signature has one sharp (F#) and the time signature is 3/8. The Violin I part features a melodic line with many accidentals. The Violin II part has a similar melodic line. The Viola part has a few notes and rests. The Cello part has a few notes and rests. The Double bass part has a rhythmic pattern of eighth notes.

115

Violin I

Violin II

Viola

Cello

Double bass

This musical score covers measures 115 to 17. It is written for five instruments: Violin I, Violin II, Viola, Cello, and Double bass. The key signature has one sharp (F#) and the time signature is 3/8. The Violin I part has a few notes and rests. The Violin II part has a few notes and rests. The Viola part has a melodic line with many accidentals. The Cello part has a melodic line with many accidentals. The Double bass part has a rhythmic pattern of eighth notes.

117

Violin I

Violin II

Viola

Cello

Double bass

Detailed description: This system of music covers measures 117 and 118. It features five staves: Violin I, Violin II, Viola, Cello, and Double bass. The key signature is one sharp (F#) and the time signature is 3/8. In measure 117, Violin I and Violin II play a melodic line with eighth notes and slurs. The Viola, Cello, and Double bass provide a rhythmic accompaniment with eighth notes and rests. In measure 118, the Violin I and Violin II parts continue their melodic line. The Viola and Cello parts feature a long, sustained note with a slur, while the Double bass continues with eighth notes.

119

Violin I

Violin II

Viola

Cello

Double bass

Detailed description: This system of music covers measures 119 and 120. It features five staves: Violin I, Violin II, Viola, Cello, and Double bass. The key signature is one sharp (F#) and the time signature is 3/8. In measure 119, Violin I and Violin II play a melodic line with eighth notes and slurs. The Viola, Cello, and Double bass provide a rhythmic accompaniment with eighth notes and rests. In measure 120, the Violin I and Violin II parts continue their melodic line. The Viola, Cello, and Double bass parts feature a long, sustained note with a slur, while the Double bass continues with eighth notes.

121 19

Violin I  
Violin II  
Viola  
Cello  
Double bass

This system contains measures 121 and 122. The key signature has one sharp (F#). The time signature is 3/8. Violin I plays a continuous eighth-note pattern. Violin II plays a similar eighth-note pattern with some chromaticism. Viola and Cello play a rhythmic pattern of eighth notes and rests. Double bass plays a simple eighth-note accompaniment.

123

Violin I  
Violin II  
Viola  
Cello  
Double bass

This system contains measures 123 and 124. The key signature has one sharp (F#). The time signature is 3/8. Violin I continues with a steady eighth-note line. Violin II plays a more active eighth-note line. Viola and Cello play a rhythmic pattern of eighth notes and rests. Double bass plays a simple eighth-note accompaniment.

125

Violin I  
Violin II  
Viola  
Cello

This system contains measures 125 and 126. The key signature has one sharp (F#). The time signature is 3/8. Violin I continues with a steady eighth-note line. Violin II plays a more active eighth-note line. Viola and Cello play a rhythmic pattern of eighth notes and rests.

127

Violin I

Violin II

Viola

Cello

Double bass

Detailed description: This block contains the musical notation for measures 127 and 128. The score is for a string quartet, with parts for Violin I, Violin II, Viola, Cello, and Double bass. The music is in 3/8 time and the key signature has one sharp (F#). In measure 127, Violin I plays a series of eighth notes starting on G4. Violin II plays a similar line but with some rests. The Viola, Cello, and Double bass parts consist of eighth notes and rests, providing a rhythmic accompaniment. Measure 128 continues the patterns established in the previous measure.

129

Violin I

Violin II

Viola

Cello

Double bass

Detailed description: This block contains the musical notation for measures 129 and 130. The instrumentation and key signature remain the same as in the previous block. In measure 129, Violin I continues with eighth notes. Violin II has a more active line with eighth notes and some rests. The Viola, Cello, and Double bass parts continue with their respective rhythmic patterns. Measure 130 concludes the sequence with similar melodic and rhythmic elements.

131

Violin I  
Violin II  
Viola  
Cello  
Double bass

This musical score covers measures 131 and 132. It is written for a string quartet in G major (one sharp) and 3/4 time. The Violin I part features a melodic line with eighth notes in measure 131, followed by a more complex rhythmic pattern in measure 132. The Violin II part plays a steady eighth-note accompaniment. The Viola and Cello parts provide harmonic support with similar eighth-note patterns. The Double bass part maintains a consistent eighth-note accompaniment throughout both measures.

133

Violin I  
Violin II  
Viola  
Cello  
Double bass

This musical score covers measures 133 and 134. The Violin I part continues its melodic development, featuring a mix of eighth and sixteenth notes. The Violin II part continues its accompaniment. The Viola and Cello parts also continue their accompaniment. The Double bass part maintains its eighth-note accompaniment. The key signature remains G major and the time signature is 3/4.

135

Violin I  
Violin II  
Viola  
Cello  
Double bass

This musical system covers measures 135 and 136. The key signature is one sharp (F#) and the time signature is 3/8. In measure 135, Violin I plays a melodic line of eighth notes: F#4, G4, A4, B4, C5, B4, A4, G4, F#4. Violin II, Viola, Cello, and Double bass play a rhythmic accompaniment of eighth notes: F#3, G3, A3, B3, C4, B3, A3, G3, F#3. In measure 136, Violin I continues with a melodic line: C5, B4, A4, G4, F#4, G4, A4, B4, C5. The other instruments continue with the same rhythmic accompaniment.

137

Violin I  
Violin II  
Viola  
Cello  
Double bass

This musical system covers measures 137 and 138. The key signature is one sharp (F#) and the time signature is 3/8. In measure 137, Violin I plays a melodic line of eighth notes: C5, B4, A4, G4, F#4, G4, A4, B4, C5. Violin II, Viola, Cello, and Double bass play a rhythmic accompaniment of eighth notes: F#3, G3, A3, B3, C4, B3, A3, G3, F#3. In measure 138, Violin I continues with a melodic line: C5, B4, A4, G4, F#4, G4, A4, B4, C5. The other instruments continue with the same rhythmic accompaniment.

139

Violin I

Violin II

Viola

Cello

Double bass

Detailed description: This musical score covers measures 139 and 140. The key signature has one sharp (F#). The time signature is 3/4. In measure 139, Violin I plays a quarter note F#4, followed by two eighth notes G4 and A4, and a quarter rest. Violin II plays a quarter note F#3, followed by two eighth notes G3 and A3, and a quarter rest. Viola plays a quarter note F#3, followed by two eighth notes G3 and A3, and a quarter rest. Cello plays a quarter note F#2, followed by eighth notes G2, A2, B2, C3, D3, E3, F#3, G3, A3, B3, C4, D4, E4, F#4, G4, A4, B4, C5, D5, E5, F#5, G5, A5, B5, C6, D6, E6, F#6, G6, A6, B6, C7, D7, E7, F#7, G7, A7, B7, C8, D8, E8, F#8, G8, A8, B8, C9, D9, E9, F#9, G9, A9, B9, C10, D10, E10, F#10, G10, A10, B10, C11, D11, E11, F#11, G11, A11, B11, C12, D12, E12, F#12, G12, A12, B12, C13, D13, E13, F#13, G13, A13, B13, C14, D14, E14, F#14, G14, A14, B14, C15, D15, E15, F#15, G15, A15, B15, C16, D16, E16, F#16, G16, A16, B16, C17, D17, E17, F#17, G17, A17, B17, C18, D18, E18, F#18, G18, A18, B18, C19, D19, E19, F#19, G19, A19, B19, C20, D20, E20, F#20, G20, A20, B20, C21, D21, E21, F#21, G21, A21, B21, C22, D22, E22, F#22, G22, A22, B22, C23, D23, E23, F#23, G23, A23, B23, C24, D24, E24, F#24, G24, A24, B24, C25, D25, E25, F#25, G25, A25, B25, C26, D26, E26, F#26, G26, A26, B26, C27, D27, E27, F#27, G27, A27, B27, C28, D28, E28, F#28, G28, A28, B28, C29, D29, E29, F#29, G29, A29, B29, C30, D30, E30, F#30, G30, A30, B30, C31, D31, E31, F#31, G31, A31, B31, C32, D32, E32, F#32, G32, A32, B32, C33, D33, E33, F#33, G33, A33, B33, C34, D34, E34, F#34, G34, A34, B34, C35, D35, E35, F#35, G35, A35, B35, C36, D36, E36, F#36, G36, A36, B36, C37, D37, E37, F#37, G37, A37, B37, C38, D38, E38, F#38, G38, A38, B38, C39, D39, E39, F#39, G39, A39, B39, C40, D40, E40, F#40, G40, A40, B40, C41, D41, E41, F#41, G41, A41, B41, C42, D42, E42, F#42, G42, A42, B42, C43, D43, E43, F#43, G43, A43, B43, C44, D44, E44, F#44, G44, A44, B44, C45, D45, E45, F#45, G45, A45, B45, C46, D46, E46, F#46, G46, A46, B46, C47, D47, E47, F#47, G47, A47, B47, C48, D48, E48, F#48, G48, A48, B48, C49, D49, E49, F#49, G49, A49, B49, C50, D50, E50, F#50, G50, A50, B50, C51, D51, E51, F#51, G51, A51, B51, C52, D52, E52, F#52, G52, A52, B52, C53, D53, E53, F#53, G53, A53, B53, C54, D54, E54, F#54, G54, A54, B54, C55, D55, E55, F#55, G55, A55, B55, C56, D56, E56, F#56, G56, A56, B56, C57, D57, E57, F#57, G57, A57, B57, C58, D58, E58, F#58, G58, A58, B58, C59, D59, E59, F#59, G59, A59, B59, C60, D60, E60, F#60, G60, A60, B60, C61, D61, E61, F#61, G61, A61, B61, C62, D62, E62, F#62, G62, A62, B62, C63, D63, E63, F#63, G63, A63, B63, C64, D64, E64, F#64, G64, A64, B64, C65, D65, E65, F#65, G65, A65, B65, C66, D66, E66, F#66, G66, A66, B66, C67, D67, E67, F#67, G67, A67, B67, C68, D68, E68, F#68, G68, A68, B68, C69, D69, E69, F#69, G69, A69, B69, C70, D70, E70, F#70, G70, A70, B70, C71, D71, E71, F#71, G71, A71, B71, C72, D72, E72, F#72, G72, A72, B72, C73, D73, E73, F#73, G73, A73, B73, C74, D74, E74, F#74, G74, A74, B74, C75, D75, E75, F#75, G75, A75, B75, C76, D76, E76, F#76, G76, A76, B76, C77, D77, E77, F#77, G77, A77, B77, C78, D78, E78, F#78, G78, A78, B78, C79, D79, E79, F#79, G79, A79, B79, C80, D80, E80, F#80, G80, A80, B80, C81, D81, E81, F#81, G81, A81, B81, C82, D82, E82, F#82, G82, A82, B82, C83, D83, E83, F#83, G83, A83, B83, C84, D84, E84, F#84, G84, A84, B84, C85, D85, E85, F#85, G85, A85, B85, C86, D86, E86, F#86, G86, A86, B86, C87, D87, E87, F#87, G87, A87, B87, C88, D88, E88, F#88, G88, A88, B88, C89, D89, E89, F#89, G89, A89, B89, C90, D90, E90, F#90, G90, A90, B90, C91, D91, E91, F#91, G91, A91, B91, C92, D92, E92, F#92, G92, A92, B92, C93, D93, E93, F#93, G93, A93, B93, C94, D94, E94, F#94, G94, A94, B94, C95, D95, E95, F#95, G95, A95, B95, C96, D96, E96, F#96, G96, A96, B96, C97, D97, E97, F#97, G97, A97, B97, C98, D98, E98, F#98, G98, A98, B98, C99, D99, E99, F#99, G99, A99, B99, C100, D100, E100, F#100, G100, A100, B100, C101, D101, E101, F#101, G101, A101, B101, C102, D102, E102, F#102, G102, A102, B102, C103, D103, E103, F#103, G103, A103, B103, C104, D104, E104, F#104, G104, A104, B104, C105, D105, E105, F#105, G105, A105, B105, C106, D106, E106, F#106, G106, A106, B106, C107, D107, E107, F#107, G107, A107, B107, C108, D108, E108, F#108, G108, A108, B108, C109, D109, E109, F#109, G109, A109, B109, C110, D110, E110, F#110, G110, A110, B110, C111, D111, E111, F#111, G111, A111, B111, C112, D112, E112, F#112, G112, A112, B112, C113, D113, E113, F#113, G113, A113, B113, C114, D114, E114, F#114, G114, A114, B114, C115, D115, E115, F#115, G115, A115, B115, C116, D116, E116, F#116, G116, A116, B116, C117, D117, E117, F#117, G117, A117, B117, C118, D118, E118, F#118, G118, A118, B118, C119, D119, E119, F#119, G119, A119, B119, C120, D120, E120, F#120, G120, A120, B120, C121, D121, E121, F#121, G121, A121, B121, C122, D122, E122, F#122, G122, A122, B122, C123, D123, E123, F#123, G123, A123, B123, C124, D124, E124, F#124, G124, A124, B124, C125, D125, E125, F#125, G125, A125, B125, C126, D126, E126, F#126, G126, A126, B126, C127, D127, E127, F#127, G127, A127, B127, C128, D128, E128, F#128, G128, A128, B128, C129, D129, E129, F#129, G129, A129, B129, C130, D130, E130, F#130, G130, A130, B130, C131, D131, E131, F#131, G131, A131, B131, C132, D132, E132, F#132, G132, A132, B132, C133, D133, E133, F#133, G133, A133, B133, C134, D134, E134, F#134, G134, A134, B134, C135, D135, E135, F#135, G135, A135, B135, C136, D136, E136, F#136, G136, A136, B136, C137, D137, E137, F#137, G137, A137, B137, C138, D138, E138, F#138, G138, A138, B138, C139, D139, E139, F#139, G139, A139, B139, C140, D140, E140, F#140, G140, A140, B140, C141, D141, E141, F#141, G141, A141, B141, C142, D142, E142, F#142, G142, A142, B142, C143, D143, E143, F#143, G143, A143, B143, C144, D144, E144, F#144, G144, A144, B144, C145, D145, E145, F#145, G145, A145, B145, C146, D146, E146, F#146, G146, A146, B146, C147, D147, E147, F#147, G147, A147, B147, C148, D148, E148, F#148, G148, A148, B148, C149, D149, E149, F#149, G149, A149, B149, C150, D150, E150, F#150, G150, A150, B150, C151, D151, E151, F#151, G151, A151, B151, C152, D152, E152, F#152, G152, A152, B152, C153, D153, E153, F#153, G153, A153, B153, C154, D154, E154, F#154, G154, A154, B154, C155, D155, E155, F#155, G155, A155, B155, C156, D156, E156, F#156, G156, A156, B156, C157, D157, E157, F#157, G157, A157, B157, C158, D158, E158, F#158, G158, A158, B158, C159, D159, E159, F#159, G159, A159, B159, C160, D160, E160, F#160, G160, A160, B160, C161, D161, E161, F#161, G161, A161, B161, C162, D162, E162, F#162, G162, A162, B162, C163, D163, E163, F#163, G163, A163, B163, C164, D164, E164, F#164, G164, A164, B164, C165, D165, E165, F#165, G165, A165, B165, C166, D166, E166, F#166, G166, A166, B166, C167, D167, E167, F#167, G167, A167, B167, C168, D168, E168, F#168, G168, A168, B168, C169, D169, E169, F#169, G169, A169, B169, C170, D170, E170, F#170, G170, A170, B170, C171, D171, E171, F#171, G171, A171, B171, C172, D172, E172, F#172, G172, A172, B172, C173, D173, E173, F#173, G173, A173, B173, C174, D174, E174, F#174, G174, A174, B174, C175, D175, E175, F#175, G175, A175, B175, C176, D176, E176, F#176, G176, A176, B176, C177, D177, E177, F#177, G177, A177, B177, C178, D178, E178, F#178, G178, A178, B178, C179, D179, E179, F#179, G179, A179, B179, C180, D180, E180, F#180, G180, A180, B180, C181, D181, E181, F#181, G181, A181, B181, C182, D182, E182, F#182, G182, A182, B182, C183, D183, E183, F#183, G183, A183, B183, C184, D184, E184, F#184, G184, A184, B184, C185, D185, E185, F#185, G185, A185, B185, C186, D186, E186, F#186, G186, A186, B186, C187, D187, E187, F#187, G187, A187, B187, C188, D188, E188, F#188, G188, A188, B188, C189, D189, E189, F#189, G189, A189, B189, C190, D190, E190, F#190, G190, A190, B190, C191, D191, E191, F#191, G191, A191, B191, C192, D192, E192, F#192, G192, A192, B192, C193, D193, E193, F#193, G193, A193, B193, C194, D194, E194, F#194, G194, A194, B194, C195, D195, E195, F#195, G195, A195, B195, C196, D196, E196, F#196, G196, A196, B196, C197, D197, E197, F#197, G197, A197, B197, C198, D198, E198, F#198, G198, A198, B198, C199, D199, E199, F#199, G199, A199, B199, C200, D200, E200, F#200, G200, A200, B200, C201, D201, E201, F#201, G201, A201, B201, C202, D202, E202, F#202, G202, A202, B202, C203, D203, E203, F#203, G203, A203, B203, C204, D204, E204, F#204, G204, A204, B204, C205, D205, E205, F#205, G205, A205, B205, C206, D206, E206, F#206, G206, A206, B206, C207, D207, E207, F#207, G207, A207, B207, C208, D208, E208, F#208, G208, A208, B208, C209, D209, E209, F#209, G209, A209, B209, C210, D210, E210, F#210, G210, A210, B210, C211, D211, E211, F#211, G211, A211, B211, C212, D212, E212, F#212, G212, A212, B212, C213, D213, E213, F#213, G213, A213, B213, C214, D214, E214, F#214, G214, A214, B214, C215, D215, E215, F#215, G215, A215, B215, C216, D216, E216, F#216, G216, A216, B216, C217, D217, E217, F#217, G217, A217, B217, C218, D218, E218, F#218, G218, A218, B218, C219, D219, E219, F#219, G219, A219, B219, C220, D220, E220, F#220, G220, A220, B220, C221, D221, E221, F#221, G221, A221, B221, C222, D222, E222, F#222, G222, A222, B222, C223, D223, E223, F#223, G223, A223, B223, C224, D224, E224, F#224, G224, A224, B224, C225, D225, E225, F#225, G225, A225, B225, C226, D226, E226, F#226, G226, A226, B226, C227, D227, E227, F#227, G227, A227, B227, C228, D228, E228, F#228, G228, A228, B228, C229, D229, E229, F#229, G229, A229, B229, C230, D230, E230, F#230, G230, A230, B230, C231, D231, E231, F#231, G231, A231, B231, C232, D232, E232, F#232, G232, A232, B232, C233, D233, E233, F#233, G233, A233, B233, C234, D234, E234, F#234, G234, A234, B234, C235, D235, E235, F#235, G235, A235, B235, C236, D236, E236, F#236, G236, A236, B236, C237, D237, E237, F#237, G237, A237, B237, C238, D238, E238, F#238, G238, A238, B238, C239, D239, E239, F#239, G239, A239, B239, C240, D240, E240, F#240, G240, A240, B240, C241, D241, E241, F#241, G241, A241, B241, C242, D242, E242, F#242, G242, A242, B242, C243, D243, E243, F#243, G243, A243, B243, C244, D244, E244, F#244, G244, A244, B244, C245, D245, E245, F#245, G245, A245, B245, C246, D246, E246, F#246, G246, A246, B246, C247, D247, E247, F#247, G247, A247, B247, C248, D248, E248, F#248, G248, A248, B248, C249, D249, E249, F#249, G249, A249, B249, C250, D250, E250, F#250, G250, A250, B250, C251, D251, E251, F#251, G251, A251, B251, C252, D252, E252, F#252, G252, A252, B252, C253, D253, E253, F#253, G253, A253, B253, C254, D254, E254, F#254, G254, A254, B254, C255, D255, E255, F#255, G255, A255, B255, C256, D256, E256, F#256, G256, A256, B256, C257, D257, E257, F#257, G257, A257, B257, C258, D258, E258, F#258, G258, A258, B258, C259, D259, E259, F#259, G259, A259, B259, C260, D260, E260, F#260, G260, A260, B260, C261, D261, E261, F#261, G261, A261, B261, C262, D262, E262, F#262, G262, A262, B262, C263, D263, E263, F#263, G263, A263, B263, C264, D264, E264, F#264, G264, A264, B264, C265, D265, E265, F#265, G265, A265, B265, C266, D266, E266, F#266, G266, A266, B266, C267, D267, E267, F#267, G267, A267, B267, C268, D268, E268, F#268, G268, A268, B268, C269, D269, E269, F#269, G269, A269, B269, C270, D270, E270, F#270, G270, A270, B270, C271, D271, E271, F#271, G271, A271, B271, C272, D272, E272, F#272, G272, A272, B272, C273, D273, E273, F#273, G273, A273, B273, C274, D274, E274, F#274, G274, A274, B274, C275, D275, E275, F#275, G275, A275, B275, C276, D276, E276, F#276, G276, A276, B276, C277, D277, E277, F#277, G277, A277, B277, C278, D278, E278, F#278, G278, A278, B278, C279, D279, E279, F#279, G279, A279, B279, C280, D280, E280, F#280, G280, A280, B280, C281, D281, E281, F#281, G281, A281, B281, C282, D282, E282, F#282, G282, A282, B282, C283, D283, E283, F#283, G283, A283, B283, C284, D284, E284, F#284, G284, A284, B284, C285, D285, E285, F#285, G285, A285, B285, C286, D286, E286, F#286, G286, A286, B286, C287, D287, E287, F#287, G287, A287, B287, C288, D288, E288, F#288, G288, A288, B288, C289, D289, E289, F#289, G289, A289, B289, C290, D290, E290, F#290, G290, A290, B290, C291, D291, E291, F#291, G291, A291, B291, C292, D292, E292, F#292, G292, A292, B292, C293, D293, E293, F#293, G293, A293, B293, C294, D294, E294, F#294, G294, A294, B294, C295, D295, E295, F#295, G295, A295, B295, C296, D296, E296, F#296, G296, A296, B296, C297, D297, E297, F#297, G297, A297, B297, C298, D298, E298, F#298, G298, A298, B298, C299, D299, E299, F#299, G299, A299, B299, C300, D300, E300, F#300, G300, A300, B300, C301, D301, E301, F#301, G301, A301, B301, C302, D302, E302, F#302, G302, A302, B302, C303, D303, E303, F#303, G303, A303, B303, C304, D304, E304, F#304, G304, A304, B304, C305, D305, E305, F#305, G305, A305, B305, C306, D306, E306, F#306, G306, A306, B306, C307, D307, E307, F#307, G307, A307, B307, C308, D308, E308, F#308, G308, A308, B308, C309, D309, E309, F#309, G309, A309, B309, C310, D310, E310, F#310, G310, A310, B310, C311, D311, E311, F#311, G311, A311, B311, C312, D312, E312, F#312, G312, A312, B312, C313, D313, E313, F#313, G313, A313, B313, C314, D314, E314, F#314, G314, A314, B314, C315, D315, E315, F#315, G315, A315, B315, C316, D316, E316, F#316, G316, A316, B316, C317, D317, E317, F#317, G317, A317, B317, C318, D318, E318, F#318, G318, A318, B318, C319, D319, E319, F#319, G319, A319, B319, C320, D320, E320, F#320, G320, A320, B320, C321, D321, E321, F#321, G321, A321, B321, C322, D322, E322, F#322, G322, A322, B322, C323, D323, E323, F#323, G323, A323, B323, C324, D324, E324, F#324, G324, A324, B324, C325, D325, E325, F#325, G325, A325, B325, C326, D326, E326, F#326, G326, A326, B326, C327, D327, E327, F#327, G327, A327, B327, C328, D328, E328, F#328, G328, A328, B328, C329, D329, E329, F#329, G329, A329, B329, C330, D330, E330, F#330, G330, A330, B330, C331, D331, E331, F#331, G331, A331, B331, C332, D332, E332, F#332, G332, A332, B332, C333, D333, E333, F#333, G333, A333, B333, C334, D334, E334, F#334, G334, A334, B334, C335, D335, E335, F#335, G335, A335, B335, C336, D336, E336, F#336, G336, A336, B336, C337, D337, E337, F#337, G337, A337, B337, C338, D338, E338, F#338, G338, A338, B338, C339, D339, E339, F#339, G339, A339, B339, C340, D340, E340, F#340, G340, A340, B340, C341, D341, E341, F#341, G341, A341, B341, C342, D342, E342, F#342, G342, A342, B342, C343, D343, E343, F#343, G343, A343, B343, C344, D344, E344, F#344, G344, A344, B344, C345, D345, E345, F#345, G345, A345, B345, C346, D346, E346, F#346, G346, A346, B346, C347, D347, E347, F#347, G347, A347, B347, C348, D348, E348, F#348, G348, A348, B348, C349, D349, E349, F#349, G349, A349, B349, C350, D350, E350, F#350, G350, A350, B350, C351, D351, E351, F#351, G351, A351, B351, C352, D352, E352, F#352, G352, A352, B352, C353, D353, E353, F#353, G353, A353, B353, C354, D354, E354, F#354, G354, A354, B354, C355, D355, E355, F#355, G355, A355, B355, C356, D356, E356, F#356, G356, A356, B356, C357, D357, E357, F#357, G357, A357, B357, C358, D358, E358, F#358, G358, A358, B358, C359, D359, E359, F#359,

♩ = 119,000160 ♩ = 120,000160 ♩ = 122,000160 ♩ = 123,000221 ♩ = 124,000221

143

Violin I

Violin II

Viola

Cello

Double bass

Detailed description: This block contains the musical notation for measures 143 and 144. It features five staves: Violin I, Violin II, Viola, Cello, and Double bass. The key signature is one sharp (F#). Measure 143 begins with a treble clef and a 3/8 time signature. The Violin I and II parts play a rhythmic pattern of eighth notes with slurs. The Viola part has a more complex melodic line. The Cello part plays a steady eighth-note accompaniment. The Double bass part plays a simple eighth-note bass line. Measure 144 continues these patterns with some melodic variations in the upper strings.

♩ = 118,000137

145

Violin I

Violin II

Viola

Cello

Double bass

Detailed description: This block contains the musical notation for measures 145 and 146. It features five staves: Violin I, Violin II, Viola, Cello, and Double bass. The key signature is one sharp (F#). Measure 145 starts with a treble clef and a 3/8 time signature. The Violin I part has a very active, fast-moving line with many slurs. The Violin II part follows a similar but slightly lower melodic line. The Viola part has a steady eighth-note accompaniment. The Cello part plays a steady eighth-note accompaniment. The Double bass part plays a simple eighth-note bass line. Measure 146 continues these patterns, with the Violin I part showing some melodic variation.



147

Violin I

Violin II

Viola

Cello

Double bass

Detailed description: This musical score block covers measures 147 and 148. It features five staves: Violin I, Violin II, Viola, Cello, and Double bass. The key signature is one sharp (F#) and the time signature is 3/8. In measure 147, Violin I and II play a melodic line of eighth notes, while the Viola, Cello, and Double bass play a steady eighth-note accompaniment. In measure 148, the Violin I and II parts conclude with a few notes and rests, while the lower strings continue their accompaniment.

149

Violin I

Violin II

Viola

Cello

Double bass

Detailed description: This musical score block covers measures 149 and 150. It features five staves: Violin I, Violin II, Viola, Cello, and Double bass. The key signature is one sharp (F#) and the time signature is 3/8. In measure 149, Violin I and II play a melodic line of eighth notes, while the Viola, Cello, and Double bass play a steady eighth-note accompaniment. In measure 150, the Violin I and II parts conclude with a few notes and rests, while the lower strings continue their accompaniment.

151

Violin I

Violin II

Viola

Cello

Double bass

Detailed description: This system of musical notation covers measures 151 and 152. It features five staves: Violin I, Violin II, Viola, Cello, and Double bass. The key signature is one sharp (F#) and the time signature is 3/8. In measure 151, Violin I plays a melodic line with eighth notes, while Violin II, Viola, Cello, and Double bass provide a rhythmic accompaniment of eighth notes. In measure 152, Violin I continues its melodic line, and the other instruments continue their accompaniment.

153

Violin I

Violin II

Viola

Cello

Double bass

Detailed description: This system of musical notation covers measures 153 and 154. It features five staves: Violin I, Violin II, Viola, Cello, and Double bass. The key signature is one sharp (F#) and the time signature is 3/8. In measure 153, Violin I plays a melodic line with eighth notes, while Violin II, Viola, Cello, and Double bass provide a rhythmic accompaniment of eighth notes. In measure 154, Violin I continues its melodic line, and the other instruments continue their accompaniment.

155  $\text{♩} = 95,000$

Violin I  
Violin II  
Viola  
Cello  
Double bass

This musical score segment covers measures 155 to 158. It is written for a string quartet in G major (one sharp). The time signature is 3/4. The Violin I part features a melodic line with eighth-note patterns and some sixteenth-note runs. The Violin II part provides harmonic support with similar rhythmic patterns. The Viola part plays a steady eighth-note accompaniment. The Cello and Double bass parts provide a bass line with a mix of eighth and quarter notes. The tempo marking is 95,000.

159  $\text{♩} = 113,000$

Violin I  
Violin II  
Viola  
Cello  
Double bass

This musical score segment covers measures 159 to 162. The tempo has increased to 113,000. The Violin I part continues with a melodic line, now featuring more complex rhythmic patterns including sixteenth and thirty-second notes. The Violin II part follows a similar melodic path. The Viola part continues with its eighth-note accompaniment. The Cello and Double bass parts provide a steady bass line with eighth and quarter notes. The tempo marking is 113,000.

164

Violin I

Violin II

Viola

Cello

Double bass

Detailed description: This block contains the musical notation for measures 164 through 168. It features five staves: Violin I, Violin II, Viola, Cello, and Double bass. The music is in 3/4 time with a tempo of 117. The key signature has one sharp (F#). The notation includes various note values, rests, and dynamic markings. The Violin I part starts with a series of eighth notes, while the other instruments provide harmonic support with chords and moving lines.

169

Violin I

Violin II

Viola

Cello

Double bass

Detailed description: This block contains the musical notation for measures 169 through 173. It features five staves: Violin I, Violin II, Viola, Cello, and Double bass. The music continues in 3/4 time with a tempo of 117. The key signature remains one sharp. The Violin I part features a melodic line with some grace notes. The other instruments continue their harmonic accompaniment.

♩ = 95 5 0 0 5 4 5 0 0 0 3 1

173

Violin I

Violin II

Viola

Cello

Double bass

176

Violin I

Violin II

Viola

Cello

Double bass

179

Violin I

Violin II

Viola

Cello

Double bass

Detailed description: This musical score covers measures 179 and 180. The key signature has one sharp (F#) and the time signature is 3/8. The Violin I part starts with a quarter note F#4, followed by eighth notes G4, A4, and B4. The Violin II part starts with a quarter note E4, followed by eighth notes D4, C4, and B3. The Viola part starts with a quarter note D4, followed by eighth notes C4, B3, and A3. The Cello part starts with a quarter note G3, followed by eighth notes F3, E3, and D3. The Double bass part starts with a quarter note G2, followed by eighth notes F2, E2, and D2. Measure 180 continues with similar rhythmic patterns and melodic lines.

181

Violin I

Violin II

Viola

Cello

Double bass

Detailed description: This musical score covers measures 181 and 182. The key signature has one sharp (F#) and the time signature is 3/8. The Violin I part starts with a quarter note F#4, followed by eighth notes G4, A4, and B4. The Violin II part starts with a quarter note E4, followed by eighth notes D4, C4, and B3. The Viola part starts with a quarter note D4, followed by eighth notes C4, B3, and A3. The Cello part starts with a quarter note G3, followed by eighth notes F3, E3, and D3. The Double bass part starts with a quarter note G2, followed by eighth notes F2, E2, and D2. Measure 182 continues with similar rhythmic patterns and melodic lines.

183

Violin I

Violin II

Viola

Cello

Double bass

Detailed description: This system of musical notation covers measures 183 and 184. The Violin I part begins with a measure rest in measure 183, followed by a half note G2 in measure 184. The Violin II part has a measure rest in measure 183 and a half note G2 in measure 184. The Viola part has a measure rest in measure 183 and a half note G2 in measure 184. The Cello part plays a rhythmic pattern of eighth notes in measure 183, which continues into measure 184. The Double bass part has a measure rest in measure 183 and a half note G2 in measure 184. A fermata is placed over the final chord in measure 184.

185

Violin I

Violin II

Viola

Cello

Double bass

Detailed description: This system of musical notation covers measures 185, 186, and 187. The Violin I part plays a series of chords in measure 185, followed by a half note G2 in measure 186, and a half note G2 in measure 187. The Violin II part plays a series of chords in measure 185, followed by a half note G2 in measure 186, and a half note G2 in measure 187. The Viola part plays a series of chords in measure 185, followed by a half note G2 in measure 186, and a half note G2 in measure 187. The Cello part plays a rhythmic pattern of eighth notes in measure 185, which continues into measure 186 and 187. The Double bass part has a measure rest in measure 185 and a half note G2 in measure 186, followed by a half note G2 in measure 187.

188

Violin I

Violin II

Viola

Cello

Double bass

This musical system covers measures 188, 189, and 190. It features five staves: Violin I, Violin II, Viola, Cello, and Double bass. The key signature has one flat (B-flat). Measure 188 shows a complex texture with many beamed notes in the upper strings. Measure 189 continues this texture with some rests in the lower strings. Measure 190 features a more rhythmic pattern with prominent eighth notes in the upper strings and a steady bass line.

191

Violin I

Violin II

Viola

Cello

Double bass

This musical system covers measures 191, 192, 193, and 194. It features five staves: Violin I, Violin II, Viola, Cello, and Double bass. The key signature has one flat (B-flat). Measure 191 has a prominent rest in the Violin I part. Measure 192 shows a dense texture with many beamed notes. Measure 193 continues with similar textures. Measure 194 features a more rhythmic pattern with prominent eighth notes in the upper strings and a steady bass line.



195

Violin I

Violin II

Viola

Cello

Double bass

Detailed description: This block contains the musical notation for measures 195, 196, and 197. The score is for a string quartet, with parts for Violin I, Violin II, Viola, Cello, and Double bass. The music is in 3/4 time and features a key signature of one sharp (F#). Measure 195 shows a dense texture with many notes in the upper staves. Measure 196 has a more open texture with some rests. Measure 197 features a melodic line in the Violin I part and a sustained note in the Double bass part.

198

Violin I

Violin II

Viola

Cello

Double bass

Detailed description: This block contains the musical notation for measures 198, 199, and 200. The score continues from the previous block. Measure 198 has a prominent melodic line in the Violin I part. Measure 199 shows a more active texture with moving lines in the Violin II and Viola parts. Measure 200 features a melodic line in the Cello part and a sustained note in the Double bass part.

200

Violin I

Violin II

Viola

Cello

Double bass

Detailed description: This system of musical notation covers measures 200 and 201. It features five staves: Violin I, Violin II, Viola, Cello, and Double bass. The key signature has one flat (B-flat). Measure 200 shows the Violin I part with a whole note rest, while Violin II, Viola, Cello, and Double bass all play eighth notes. Measure 201 features a complex texture with sixteenth-note runs in Violin I, Violin II, and Viola, and sustained notes in Cello and Double bass.

202

Violin I

Violin II

Viola

Cello

Double bass

Detailed description: This system of musical notation covers measures 202 and 203. It features five staves: Violin I, Violin II, Viola, Cello, and Double bass. The key signature has one flat (B-flat). Measure 202 shows the Violin I part with a whole note rest, while Violin II, Viola, Cello, and Double bass play eighth notes. Measure 203 features a complex texture with sixteenth-note runs in Violin II, Viola, and Cello, and sustained notes in Violin I and Double bass.

204

Violin I

Violin II

Viola

Cello

Double bass

Detailed description: This system of musical notation covers measures 204 and 205. It features five staves: Violin I, Violin II, Viola, Cello, and Double bass. The key signature has one flat (B-flat), and the time signature is 3/8. In measure 204, Violin I plays a melodic line with eighth notes and slurs, while Violin II, Viola, Cello, and Double bass provide harmonic support with various rhythmic patterns. Measure 205 continues the melodic development in Violin I and the harmonic accompaniment in the other parts.

206

Violin I

Violin II

Viola

Cello

Detailed description: This system of musical notation covers measures 206 and 207. It features four staves: Violin I, Violin II, Viola, and Cello. The key signature has one flat (B-flat), and the time signature is 3/8. In measure 206, Violin I has a melodic line with eighth notes and slurs, while Violin II, Viola, and Cello provide harmonic support. Measure 207 continues the melodic development in Violin I and the harmonic accompaniment in the other parts.

208

Violin I

Violin II

Viola

Cello

Detailed description: This system of musical notation covers measures 208 and 209. It features four staves: Violin I, Violin II, Viola, and Cello. The key signature has one flat (B-flat), and the time signature is 3/8. In measure 208, Violin I has a melodic line with eighth notes and slurs, while Violin II, Viola, and Cello provide harmonic support. Measure 209 continues the melodic development in Violin I and the harmonic accompaniment in the other parts.

210  $\text{♩} = 95,000115,000137$

Violin I

Violin II

Viola

Cello

Double bass

213

Violin I

Violin II

Viola

Cello

Double bass

216 37

Violin I  
Violin II  
Viola  
Cello  
Double bass

This musical score covers measures 216 to 218. It features five staves: Violin I, Violin II, Viola, Cello, and Double bass. The Violin I and II parts play a rhythmic pattern of eighth notes, with the Violin I part ascending in pitch across the measures. The Viola part is silent, indicated by a horizontal line. The Cello and Double bass parts play a similar rhythmic pattern, with the Double bass part providing a harmonic foundation. The key signature has one sharp (F#) and the time signature is 3/4.

219

Violin I  
Violin II  
Viola  
Cello  
Double bass

This musical score covers measures 219 to 220. It features five staves: Violin I, Violin II, Viola, Cello, and Double bass. The Violin I part has a more complex rhythmic pattern with some rests. The Violin II, Viola, and Cello parts play a rhythmic pattern of eighth notes. The Double bass part plays a simple rhythmic pattern with a long note in the second measure. The key signature has one sharp (F#) and the time signature is 3/4.

221

Violin I

Violin II

Viola

Cello

Double bass

This musical system covers measures 221 and 222. It features five staves: Violin I, Violin II, Viola, Cello, and Double bass. The Violin I part begins with a treble clef and a key signature of one sharp (F#), playing a melodic line with eighth notes and a final sixteenth-note triplet. The Violin II part plays a similar eighth-note line. The Viola part has a more complex eighth-note pattern. The Cello and Double bass parts provide a harmonic foundation with a few notes and a long, sustained half-note in the bass line.

223

Violin I

Violin II

Viola

Cello

Double bass

This musical system covers measures 223 and 224. It features five staves: Violin I, Violin II, Viola, Cello, and Double bass. The Violin I part continues with a melodic line, including some rests and a final triplet. The Violin II part plays a steady eighth-note line. The Viola part continues with its eighth-note pattern. The Cello part has a few notes, and the Double bass part continues with a long, sustained half-note.

225

Violin I

Violin II

Viola

Cello

Double bass

Detailed description: This system of musical notation covers measures 225 and 226. The score is for five instruments: Violin I, Violin II, Viola, Cello, and Double bass. The key signature has one sharp (F#) and the time signature is 3/8. In measure 225, Violin I plays a series of eighth notes starting on G4, with a sharp sign above the first note. Violin II plays a similar line but with a sharp sign above the second note. Viola plays a line with a sharp sign above the second note. Cello and Double bass play a line with a sharp sign above the first note. In measure 226, Violin I continues with eighth notes. Violin II has a rest followed by eighth notes. Viola has eighth notes. Cello and Double bass have a rest followed by eighth notes.

227

Violin I

Violin II

Viola

Cello

Double bass

Detailed description: This system of musical notation covers measures 227 and 228. The key signature has one sharp (F#) and the time signature is 3/8. In measure 227, Violin I plays a line with a sharp sign above the first note and a slur over the first two notes. Violin II has a rest followed by eighth notes. Viola plays eighth notes with a sharp sign above the second note. Cello and Double bass play eighth notes with a sharp sign above the first note. In measure 228, Violin I continues with eighth notes. Violin II has eighth notes. Viola has eighth notes. Cello and Double bass have eighth notes.

229

Violin I

Violin II

Viola

Cello

Double bass

Detailed description: This block contains the musical notation for measures 229 and 230. The score is for five instruments: Violin I, Violin II, Viola, Cello, and Double bass. The key signature has one sharp (F#) and the time signature is 3/4. In measure 229, Violin I has a half note G4 with a sharp sign, followed by a quarter note A4 with a flat sign, and a quarter note B4 with a sharp sign. Violin II has a quarter note G4 with a sharp sign, followed by a quarter note A4 with a flat sign, and a quarter note B4 with a sharp sign. Viola has a quarter rest, followed by a quarter note G4 with a sharp sign, and a quarter note A4 with a flat sign. Cello and Double bass both have a quarter note G4 with a sharp sign, followed by a quarter note A4 with a flat sign, and a quarter note B4 with a sharp sign. In measure 230, Violin I has a quarter note G4 with a sharp sign, followed by a quarter note A4 with a flat sign, and a quarter note B4 with a sharp sign. Violin II has a quarter note G4 with a sharp sign, followed by a quarter note A4 with a flat sign, and a quarter note B4 with a sharp sign. Viola has a quarter note G4 with a sharp sign, followed by a quarter note A4 with a flat sign, and a quarter note B4 with a sharp sign. Cello and Double bass both have a quarter note G4 with a sharp sign, followed by a quarter note A4 with a flat sign, and a quarter note B4 with a sharp sign.

231

Violin I

Violin II

Viola

Cello

Double bass

Detailed description: This block contains the musical notation for measures 231 and 232. The score is for five instruments: Violin I, Violin II, Viola, Cello, and Double bass. The key signature has one sharp (F#) and the time signature is 3/4. In measure 231, Violin I has a half note G4 with a sharp sign, followed by a quarter note A4 with a flat sign, and a quarter note B4 with a sharp sign. Violin II has a quarter note G4 with a sharp sign, followed by a quarter note A4 with a flat sign, and a quarter note B4 with a sharp sign. Viola has a quarter note G4 with a sharp sign, followed by a quarter note A4 with a flat sign, and a quarter note B4 with a sharp sign. Cello and Double bass both have a quarter note G4 with a sharp sign, followed by a quarter note A4 with a flat sign, and a quarter note B4 with a sharp sign. In measure 232, Violin I has a quarter note G4 with a sharp sign, followed by a quarter note A4 with a flat sign, and a quarter note B4 with a sharp sign. Violin II has a quarter note G4 with a sharp sign, followed by a quarter note A4 with a flat sign, and a quarter note B4 with a sharp sign. Viola has a quarter note G4 with a sharp sign, followed by a quarter note A4 with a flat sign, and a quarter note B4 with a sharp sign. Cello and Double bass both have a quarter note G4 with a sharp sign, followed by a quarter note A4 with a flat sign, and a quarter note B4 with a sharp sign.



233 41

Violin I

Violin II

Viola

Cello

Double bass

This musical score covers measures 233 and 234. The Violin I and II parts play a rhythmic eighth-note pattern. The Viola part features a long, expressive slur over a melodic line. The Cello part plays a steady eighth-note accompaniment. The Double bass part provides a rhythmic foundation with eighth notes. The page number 41 is located in the top right corner.

235

Violin I

Violin II

Viola

Cello

Double bass

This musical score covers measures 235 and 236. The Violin I and II parts have a melodic line with a long slur. The Viola part continues with a melodic line. The Cello part plays a steady eighth-note accompaniment. The Double bass part provides a rhythmic foundation with eighth notes.

237

Violin I

Violin II

Viola

Cello

Double bass

239

Violin I

Violin II

Viola

Cello

Double bass

241

Violin I

Violin II

Viola

Cello

Double bass

This musical system covers measures 241 and 242. It features five staves: Violin I, Violin II, Viola, Cello, and Double bass. The Violin I and II parts play a continuous eighth-note ascending scale. The Viola and Cello parts have rests in measure 241 and enter in measure 242 with a melodic line. The Double bass part has a whole rest in measure 241 and enters in measure 242 with a bass line.

243

Violin I

Violin II

Viola

Cello

Double bass

This musical system covers measures 243 and 244. It features five staves: Violin I, Violin II, Viola, Cello, and Double bass. The Violin I and II parts continue their eighth-note ascending scale. The Viola, Cello, and Double bass parts play a melodic line with a key signature change from one sharp to one flat between measures 243 and 244.

245

Violin I

Violin II

Viola

Cello

Double bass

This musical system covers measures 245 and 246. It features five staves: Violin I, Violin II, Viola, Cello, and Double bass. The key signature has one sharp (F#) and the time signature is 3/8. In measure 245, Violin I and II play eighth-note patterns, while Viola, Cello, and Double bass play quarter notes. In measure 246, Violin I and II continue with eighth-note patterns, while Viola, Cello, and Double bass play eighth-note patterns.

247

Violin I

Violin II

Viola

Cello

Double bass

This musical system covers measures 247 and 248. It features five staves: Violin I, Violin II, Viola, Cello, and Double bass. The key signature has one sharp (F#) and the time signature is 3/8. In measure 247, Violin I and II play eighth-note patterns, while Viola, Cello, and Double bass play quarter notes. In measure 248, Violin I and II continue with eighth-note patterns, while Viola, Cello, and Double bass play eighth-note patterns.

249

Violin I

Violin II

Viola

Cello

Double bass

This musical score block covers measures 249 to 251. It features five staves: Violin I, Violin II, Viola, Cello, and Double bass. The music is in 3/4 time and begins with a key signature of one sharp (F#). In measure 249, Violin I and II play a rhythmic pattern of eighth notes, while the Viola, Cello, and Double bass play a pattern of quarter notes. In measure 250, the strings continue with similar rhythmic patterns. In measure 251, there is a change in the key signature to two sharps (F# and C#), and the strings play a more complex rhythmic pattern.

252

Violin I

Violin II

Viola

Cello

Double bass

This musical score block covers measures 252 to 254. It features five staves: Violin I, Violin II, Viola, Cello, and Double bass. The music continues in 3/4 time with the key signature of two sharps (F# and C#). In measure 252, Violin I and II play a rhythmic pattern of eighth notes, while the Viola, Cello, and Double bass play a pattern of quarter notes. In measure 253, the strings continue with similar rhythmic patterns. In measure 254, there is a change in the key signature to three sharps (F#, C#, and G#), and the strings play a more complex rhythmic pattern.

255

Violin I

Violin II

Viola

Cello

Double bass

This musical score covers measures 255 and 256. The key signature has one sharp (F#) and the time signature is 3/8. In measure 255, Violin I plays a melodic line with eighth notes, while Violin II, Viola, Cello, and Double bass provide a rhythmic accompaniment of eighth notes. In measure 256, Violin I continues its melodic line, and the other instruments continue their accompaniment, with some changes in harmony and dynamics.

257

Violin I

Violin II

Viola

Cello

Double bass

This musical score covers measures 257 and 258. The key signature has one sharp (F#) and the time signature is 3/8. In measure 257, Violin I plays a melodic line with eighth notes, while Violin II, Viola, Cello, and Double bass provide a rhythmic accompaniment of eighth notes. In measure 258, Violin I continues its melodic line, and the other instruments continue their accompaniment, with some changes in harmony and dynamics.

259

Violin I

Violin II

Viola

Cello

Double bass

Detailed description: This musical score covers measures 259, 260, and 261. The key signature has one sharp (F#) and the time signature is 3/8. The Violin I part features a complex rhythmic pattern of eighth and sixteenth notes with many beamed notes. The Violin II part has a more sparse, dotted rhythm. The Viola part consists of a few notes with rests. The Cello part has a rhythmic pattern similar to the Violin I. The Double bass part plays a steady eighth-note accompaniment.

262

Violin I

Violin II

Viola

Cello

Double bass

Detailed description: This musical score covers measures 262, 263, and 264. The key signature has one sharp (F#) and the time signature is 3/8. The Violin I part has a melodic line with some rests. The Violin II part has a rhythmic pattern of eighth notes. The Viola part has a melodic line with eighth notes. The Cello part has a rhythmic pattern of eighth notes. The Double bass part plays a steady eighth-note accompaniment.

264

Violin I

Violin II

Viola

Cello

Double bass

This musical system covers measures 264 and 265. It features five staves: Violin I, Violin II, Viola, Cello, and Double bass. The Violin I and II parts play a melodic line of eighth notes, with Violin II including a sharp sign. The Viola part has a rest in measure 264 followed by a melodic line. The Cello and Double bass parts play a rhythmic accompaniment of eighth notes.

266

Violin I

Violin II

Viola

Cello

Double bass

This musical system covers measures 266 and 267. It features five staves: Violin I, Violin II, Viola, Cello, and Double bass. The Violin I and II parts continue their melodic line. The Viola part continues with its melodic line. The Cello and Double bass parts continue with their rhythmic accompaniment.



268

Violin I

Violin II

Viola

Cello

Double bass

Detailed description: This block contains the musical notation for measures 268 and 269. The score is for a string quartet, with parts for Violin I, Violin II, Viola, Cello, and Double bass. The music is in 3/8 time. Measure 268 features a rhythmic pattern of eighth notes with stems pointing up and down. Measure 269 continues this pattern with some chromatic movement and a final chord in the second measure.

270

Violin I

Violin II

Viola

Cello

Double bass

Detailed description: This block contains the musical notation for measures 270 and 271. The score is for a string quartet, with parts for Violin I, Violin II, Viola, Cello, and Double bass. The music is in 3/8 time. Measure 270 features a rhythmic pattern of eighth notes with stems pointing up and down. Measure 271 continues this pattern with some chromatic movement and a final chord in the second measure.

272

Violin I

Violin II

Viola

Cello

Double bass

Detailed description: This block contains the musical notation for measures 272 and 273. It features five staves: Violin I, Violin II, Viola, Cello, and Double bass. The music is in 3/8 time and consists of eighth notes with stems pointing up. Measure 272 shows a rhythmic pattern of eighth notes across all staves. Measure 273 continues this pattern with some chromatic movement and a flat sign in the Violin II part.

274

Violin I

Violin II

Viola

Cello

Double bass

Detailed description: This block contains the musical notation for measures 274, 275, and 276. It features five staves: Violin I, Violin II, Viola, Cello, and Double bass. The music is in 3/8 time. Measure 274 shows a rhythmic pattern of eighth notes. Measure 275 features a complex rhythmic pattern with many beamed eighth notes. Measure 276 shows a continuation of the rhythmic pattern with some chromatic movement. A measure number '276' is written above the Violin I staff in the third measure.

278

Violin I

Violin II

Viola

Cello

Double bass

This musical system covers measures 278 to 282. It features five staves: Violin I, Violin II, Viola, Cello, and Double bass. The music is in 3/4 time and begins with a key signature of one flat. The Violin I part starts with a half note chord, followed by eighth notes. The Violin II part has a similar rhythmic pattern. The Viola part consists of chords. The Cello and Double bass parts play a steady eighth-note accompaniment. There is a large blacked-out area at the top of the page, likely a page number or title, with the number 278 written above it.

283 = 85

Violin I

Violin II

Viola

Cello

Double bass

This musical system covers measures 283 to 287. It features five staves: Violin I, Violin II, Viola, Cello, and Double bass. The music continues in 3/4 time. The Violin I part has a half note chord followed by eighth notes. The Violin II part has a similar rhythmic pattern. The Viola part consists of chords. The Cello and Double bass parts play a steady eighth-note accompaniment with triplets. There is a large blacked-out area at the top of the page, likely a page number or title, with the number 283 written above it.

288  $\text{♩} = 55,000004$

Violin I

Violin II

Viola

Cello

Double bass

$\text{♩} = 55,00000004$   $\text{♩} = 312,00000151$

292

Violin I

Violin II

Viola

Cello

Double bass

Chaikovsky, Peter - Serenade for Strings Op. 48. David Siu

Violin I

1 = 96,000000 1 = 68,000075

8 = 55,0000

16 = 75,000000 1 = 68,000076

22 = 64,000000 68,000076 = 61,000000

29 = 71,000038 = 52,000008

37 = 61,000000 68,000076

44 = 117,000000 68,000076

50 = 95,000031

56

62

V.S.

2

Violin I

69

75

81

86

89

$\text{♩} = 95,000145 = 115,$

92

95

98

101

104

Violin I

107

110

114

118

121

124

127

130

133

136

Violin I

138

141

$\text{♩} = 118,0001179,000160$   $\text{♩} = 1121,000010$

144

$\text{♩} = 122,000123,0001221,0001152,000137$

147

150

153

156

$\text{♩} = 95,0001113,0001108$

162

$\text{♩} = 111,000113,00011019$

168

$\text{♩} = 95,0001154,000031$

174



Violin I

180

186

192

198

204

207

$\text{♩} = 95,0001145000$

211

214

217

220

## Violin I

223

Violin I musical notation for measures 223-225. The staff is in treble clef with a key signature of one sharp (F#). Measure 223 begins with a quarter rest followed by a quarter note G4. Measure 224 contains a quarter note A4, a quarter note B4, and a quarter note C5. Measure 225 contains a quarter note D5, a quarter note E5, and a quarter note F#5.

226

Violin I musical notation for measures 226-228. Measure 226 contains a quarter note G4, a quarter note A4, and a quarter note B4. Measure 227 contains a quarter note C5, a quarter note D5, and a quarter note E5. Measure 228 contains a quarter note F#5, a quarter note G5, and a quarter note A5.

229

Violin I musical notation for measures 229-232. Measure 229 contains a quarter note B4, a quarter note C5, and a quarter note D5. Measure 230 contains a quarter note E5, a quarter note F#5, and a quarter note G5. Measure 231 contains a quarter note A5, a quarter note B5, and a quarter note C6. Measure 232 contains a quarter note D6, a quarter note E6, and a quarter note F#6.

233

Violin I musical notation for measures 233-235. Measure 233 contains a quarter note G5, a quarter note A5, and a quarter note B5. Measure 234 contains a quarter note C6, a quarter note D6, and a quarter note E6. Measure 235 contains a quarter note F#6, a quarter note G6, and a quarter note A6.

236

Violin I musical notation for measures 236-237. Measure 236 contains a quarter note B5, a quarter note C6, and a quarter note D6. Measure 237 contains a quarter note E6, a quarter note F#6, and a quarter note G6.

238

Violin I musical notation for measures 238-240. Measure 238 contains a quarter note A6, a quarter note B6, and a quarter note C7. Measure 239 contains a quarter note D7, a quarter note E7, and a quarter note F#7. Measure 240 contains a quarter note G7, a quarter note A7, and a quarter note B7.

241

Violin I musical notation for measures 241-243. Measure 241 contains a quarter note C8, a quarter note D8, and a quarter note E8. Measure 242 contains a quarter note F#8, a quarter note G8, and a quarter note A8. Measure 243 contains a quarter note B8, a quarter note C9, and a quarter note D9.

244

Violin I musical notation for measures 244-246. Measure 244 contains a quarter note E9, a quarter note F#9, and a quarter note G9. Measure 245 contains a quarter note A9, a quarter note B9, and a quarter note C10. Measure 246 contains a quarter note D10, a quarter note E10, and a quarter note F#10.

247

Violin I musical notation for measures 247-249. Measure 247 contains a quarter note G10, a quarter note A10, and a quarter note B10. Measure 248 contains a quarter note C11, a quarter note D11, and a quarter note E11. Measure 249 contains a quarter note F#11, a quarter note G11, and a quarter note A11.

250

Violin I musical notation for measures 250-252. Measure 250 contains a quarter note B11, a quarter note C12, and a quarter note D12. Measure 251 contains a quarter note E12, a quarter note F#12, and a quarter note G12. Measure 252 contains a quarter note A12, a quarter note B12, and a quarter note C13.



Chaikovsky, Peter - Serenade for Strings Op. 48. David Siu

Violin II

♩ = 96,000000 ♩ = 68,000075

8 ♩ = 85,000000 ♩ = 90015 ♩ = 55,0000

16 ♩ = 75,000000 ♩ = 68,000076 ♩ = 64,000000 ♩ = 68,0000

24 ♩ = 61,000000 ♩ = 71,000038

32 ♩ = 71,000000 ♩ = 61,000000 ♩ = 61,000000

40 ♩ = 111,000000

46 ♩ = 102,000000 ♩ = 100

52 ♩ = 95,000000 ♩ = 1000031

58

64

V.S.

Violin II

70

www.musicnoteslib.com

75

80

84

87

89

♩ = 95,000145 = 115.

92

3 2

101

104

107

112

115

119

122

125

128

132

135

139

♩ = 118,000139,000130,00020,000

144

♩ = 122,000123,00021,00015,000137



Violin II

196  $\text{♩} = 115,000031$

200

204

207

210  $\text{♩} = 95,00018,000137$

214

217

220

223

226



230

234

238

241

244

247

251

256

261

265



Chaikovsky, Peter - Serenade for Strings Op. 48. David Siu

Viola

♩ = 96,000000 ♩ = 68,000075

8 ~~♩ = 85,000000~~ ♩ = 55,000000

16 ♩ = 75,000000 ♩ = 68,000076 ♩ = 64,000000 ♩ = 68,000076

25 ♩ = 61,000000 ♩ = 71,000038

33 ~~♩ = 77,000000~~ ♩ = 62,000000 ♩ = 61,000000

41 ~~♩ = 117,000000~~

47

53 ♩ = 95,000040 ♩ = 000031

60

66

V.S.

71

76

81

85

88

91

94

97

100

103







235

240

245

248

251

255

260

265

268

271





Chaikovsky, Peter - Serenade for Strings Op. 48. David Siu

Cello

♩ = 96,000000 ♩ = 68,000075

8

14

21

28

36

43

49

54

57

V.S.

60

63

66

69

74

♩ = 95

80

86

91

♩ = 95

96

101

107



111



115



119



124



128



131



134



138



141



♩ = 118,000 ♪ = 19,000 160 ♩ = 20,000 000

V.S.

4

♩ = 122,000133,000221 ♯ = 14,8,002527

144

147

150

153

♩ = 95,011245000

157

163

169

♩ = 95,01154500031

174

177

180



231

Measures 231-234: A melodic line in the bass clef. Measure 231 starts with a quarter note G2, followed by eighth notes A2, B2, C3, D3, E3, F3, G3, A3, B3, C4, D4, E4, F4, G4, A4, B4, C5. Measure 232 continues with D5, E5, F5, G5, A5, B5, C6, D6, E6, F6, G6, A6, B6, C7, D7, E7, F7, G7, A7, B7, C8. Measure 233 has a quarter rest, followed by quarter notes G4, F4, E4, D4. Measure 234 has a quarter note G4, followed by quarter notes F4, E4, D4, C4.

235

Measures 235-238: A melodic line in the bass clef. Measure 235 starts with a quarter note G2, followed by eighth notes A2, B2, C3, D3, E3, F3, G3, A3, B3, C4, D4, E4, F4, G4, A4, B4, C5. Measure 236 continues with D5, E5, F5, G5, A5, B5, C6, D6, E6, F6, G6, A6, B6, C7, D7, E7, F7, G7, A7, B7, C8. Measure 237 has a quarter note G4, followed by quarter notes F4, E4, D4. Measure 238 has a quarter note G4, followed by quarter notes F4, E4, D4, C4.

240

Measures 240-243: A melodic line in the bass clef. Measure 240 starts with a quarter note G2, followed by quarter notes A2, B2, C3, D3, E3, F3, G3, A3, B3, C4, D4, E4, F4, G4, A4, B4, C5. Measure 241 continues with D5, E5, F5, G5, A5, B5, C6, D6, E6, F6, G6, A6, B6, C7, D7, E7, F7, G7, A7, B7, C8. Measure 242 has a quarter note G4, followed by quarter notes F4, E4, D4. Measure 243 has a quarter note G4, followed by quarter notes F4, E4, D4, C4.

245

Measures 245-247: A melodic line in the bass clef. Measure 245 starts with a quarter note G2, followed by quarter notes A2, B2, C3, D3, E3, F3, G3, A3, B3, C4, D4, E4, F4, G4, A4, B4, C5. Measure 246 continues with D5, E5, F5, G5, A5, B5, C6, D6, E6, F6, G6, A6, B6, C7, D7, E7, F7, G7, A7, B7, C8. Measure 247 has a quarter note G4, followed by quarter notes F4, E4, D4.

248

Measures 248-251: A melodic line in the bass clef. Measure 248 starts with a quarter note G2, followed by quarter notes A2, B2, C3, D3, E3, F3, G3, A3, B3, C4, D4, E4, F4, G4, A4, B4, C5. Measure 249 continues with D5, E5, F5, G5, A5, B5, C6, D6, E6, F6, G6, A6, B6, C7, D7, E7, F7, G7, A7, B7, C8. Measure 250 has a quarter note G4, followed by quarter notes F4, E4, D4. Measure 251 has a quarter note G4, followed by quarter notes F4, E4, D4, C4.

252

Measures 252-255: A melodic line in the bass clef. Measure 252 starts with a quarter note G2, followed by quarter notes A2, B2, C3, D3, E3, F3, G3, A3, B3, C4, D4, E4, F4, G4, A4, B4, C5. Measure 253 continues with D5, E5, F5, G5, A5, B5, C6, D6, E6, F6, G6, A6, B6, C7, D7, E7, F7, G7, A7, B7, C8. Measure 254 has a quarter note G4, followed by quarter notes F4, E4, D4. Measure 255 has a quarter note G4, followed by quarter notes F4, E4, D4, C4.

256

Measures 256-259: A melodic line in the bass clef. Measure 256 starts with a quarter note G2, followed by quarter notes A2, B2, C3, D3, E3, F3, G3, A3, B3, C4, D4, E4, F4, G4, A4, B4, C5. Measure 257 continues with D5, E5, F5, G5, A5, B5, C6, D6, E6, F6, G6, A6, B6, C7, D7, E7, F7, G7, A7, B7, C8. Measure 258 has a quarter note G4, followed by quarter notes F4, E4, D4. Measure 259 has a quarter note G4, followed by quarter notes F4, E4, D4, C4.

260

Measures 260-262: A melodic line in the bass clef. Measure 260 starts with a quarter note G2, followed by quarter notes A2, B2, C3, D3, E3, F3, G3, A3, B3, C4, D4, E4, F4, G4, A4, B4, C5. Measure 261 continues with D5, E5, F5, G5, A5, B5, C6, D6, E6, F6, G6, A6, B6, C7, D7, E7, F7, G7, A7, B7, C8. Measure 262 has a quarter note G4, followed by quarter notes F4, E4, D4.

263

Measures 263-265: A melodic line in the bass clef. Measure 263 starts with a quarter note G2, followed by quarter notes A2, B2, C3, D3, E3, F3, G3, A3, B3, C4, D4, E4, F4, G4, A4, B4, C5. Measure 264 continues with D5, E5, F5, G5, A5, B5, C6, D6, E6, F6, G6, A6, B6, C7, D7, E7, F7, G7, A7, B7, C8. Measure 265 has a quarter note G4, followed by quarter notes F4, E4, D4.

266

Measures 266-268: A melodic line in the bass clef. Measure 266 starts with a quarter note G2, followed by quarter notes A2, B2, C3, D3, E3, F3, G3, A3, B3, C4, D4, E4, F4, G4, A4, B4, C5. Measure 267 continues with D5, E5, F5, G5, A5, B5, C6, D6, E6, F6, G6, A6, B6, C7, D7, E7, F7, G7, A7, B7, C8. Measure 268 has a quarter note G4, followed by quarter notes F4, E4, D4.

269



272



275



281



287



291

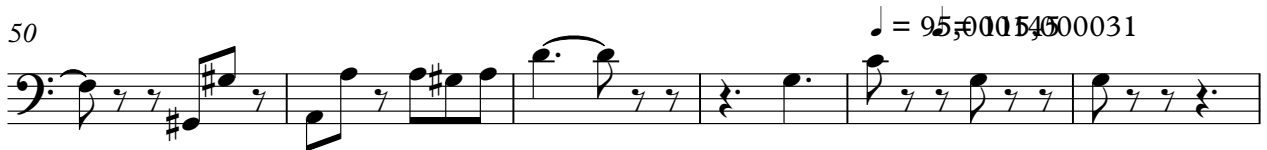
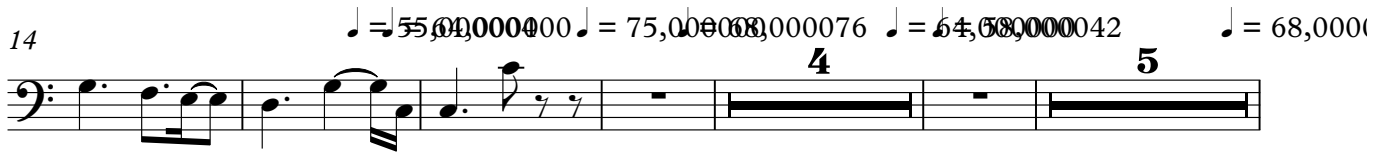
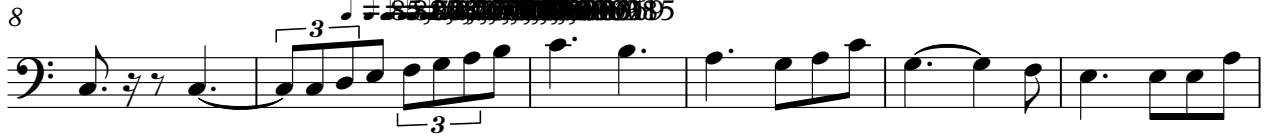




Chaikovsky, Peter - Serenade for Strings Op. 48. David Siu

Double bass

♩ = 96,000000 ♩ = 68,000075









243



247



251



256



260



263



267



270



273



279



6

Double bass

285

♩ = 55,000004



290

♩ = 55,000004 ♩ = 32,000015

