

ABBA - Tiger

00:00:03:18

1.1,00

Tiger by Abba Sequenced by Michael Boyce tinker@worldnet.att.net

♩ = 131,499939

Drums

Guitar

Bass



5

Drums

Guitar

Bass



8

♩ = 134,000061

Melody

Drums

Guitar

Bass

11

Melody

Drums

Guitar

Bass



14

Melody

Drums

Guitar

Bass

Choir

17

Melody

Drums

Guitar

Bass

Choir



19

Melody

Drums

Guitar

Bass

Choir

21

Melody

Drums

Guitar

Bass

Choir



23

Melody

Drums

Guitar

Bass

26

Melody

Drums

Guitar

Bass



29

Melody

Drums

Guitar

Bass

Choir

32

Melody

Drums

Guitar

Bass

Choir



34

Melody

Drums

Guitar

Bass

Choir

36

Melody

Drums

Guitar

Bass

Choir



38

Melody

Drums

Piano

Guitar

Bass

41

Melody

Drums

Piano

Guitar

Square

45

Melody

Drums

Piano

Guitar

Bass

Choir

48

Melody

Drums

Guitar

Bass

Choir



50

Melody

Drums

Guitar

Bass

Choir

52

Melody

Drums

Guitar

Bass

Choir



54

Melody

Drums

Guitar

Bass

57

Melody

Drums

Guitar

Bass



60

Melody

Drums

Guitar

Bass

Choir

63

Melody

Drums

Guitar

Bass

Choir



65

Melody

Drums

Guitar

Bass

Choir

67

Melody

Drums

Guitar

Bass

Choir



69

Melody

Drums

Piano

Guitar

Bass

72

Melody

Drums

Piano

Guitar

Square

76

Melody

Drums

Piano

Guitar

Bass

Choir

79

Melody

Drums

Guitar

Bass

Choir



81

Melody

Drums

Guitar

Bass

Choir

83

Melody

Drums

Guitar

Bass

Choir



85

Melody

Drums

Guitar

Bass

Choir

87

Melody

Drums

Guitar

Bass

Choir



89

Melody

Drums

Guitar

Bass

Choir

91

Melody

Drums

Guitar

Bass

Choir



93

Melody

Drums

Guitar

Bass



95

Melody

Guitar

ABBA - Tiger

Melody

♩ = 131,499939 ♩ = 134,000061

7

11

15

20

25

29

34

39

44

49

Drums

ABBA - Tiger

♩ = 131,499939

Measures 1-4: The first measure is a whole rest. The second measure contains a quarter note G4. The third and fourth measures each contain a quarter note G4 followed by a sixteenth note G4, with a double bar line between the two measures.

5

Measures 5-8: A continuous rhythmic pattern of quarter notes G4 and sixteenth notes G4.

8

♩ = 134,000061

Measures 9-11: Measure 9 continues the quarter/sixteenth pattern. Measure 10 has a quarter note G4 and a half note G4. Measure 11 has a quarter note G4 and a half note G4.

12

Measures 12-16: Measure 12 has a quarter note G4 and a half note G4. Measure 13 has a quarter note G4 and a half note G4. Measure 14 has a quarter note G4 and a half note G4. Measure 15 has a quarter note G4 and a half note G4. Measure 16 has a quarter note G4 and a half note G4.

17

Measures 17-20: A continuous rhythmic pattern of quarter notes G4 and sixteenth notes G4.

20

Measures 21-22: A continuous rhythmic pattern of quarter notes G4 and sixteenth notes G4.

23

Measures 23-26: Measure 23 has a quarter note G4 and a half note G4. Measure 24 has a quarter note G4 and a half note G4. Measure 25 has a quarter note G4 and a half note G4. Measure 26 has a quarter note G4 and a half note G4.

27

Measures 27-31: Measure 27 has a quarter note G4 and a half note G4. Measure 28 has a quarter note G4 and a half note G4. Measure 29 has a quarter note G4 and a half note G4. Measure 30 has a quarter note G4 and a half note G4. Measure 31 has a quarter note G4 and a half note G4.

32

Measures 32-34: A continuous rhythmic pattern of quarter notes G4 and sixteenth notes G4.

35

Measures 35-38: A continuous rhythmic pattern of quarter notes G4 and sixteenth notes G4.

2

Drums

38

Musical notation for drums, measures 38-45. Measure 38 has a double bar line and a '2' above it. Measure 45 has a double bar line and a '2' above it.

46

Musical notation for drums, measures 46-48.

49

Musical notation for drums, measures 49-51.

52

Musical notation for drums, measures 52-54.

55

Musical notation for drums, measures 55-59.

60

Musical notation for drums, measures 60-63.

64

Musical notation for drums, measures 64-66.

67

Musical notation for drums, measures 67-70.

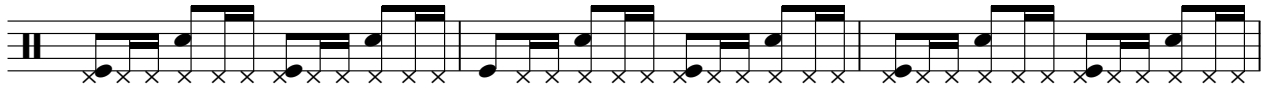
71

Musical notation for drums, measures 71-76. Measure 71 has a double bar line and a '2' above it. Measure 76 has a double bar line and a '2' above it.

78

Musical notation for drums, measures 78-80.

81



84



87



90



93



♩ = 131,499939

7

♩ = 134,000061

11

15

19

23

27

31

35

38

3

3

Detailed description: This is a guitar score for the song 'Tiger' by ABBA. It is written in a 4/4 time signature with a key signature of three flats (B-flat major or D-flat minor). The score is divided into ten systems of music. The first system starts with a tempo marking of ♩ = 131,499939. The second system has a tempo marking of ♩ = 134,000061. The systems are numbered 7, 11, 15, 19, 23, 27, 31, 35, and 38. The music consists of a series of chords and melodic lines, with some systems featuring triplets. The final system (38) includes two triplet markings over a bar.

46

50

54

58

62

66

70

79

83

87

Guitar

3

91

Musical notation for guitar, measures 91-93. The notation is in treble clef with a key signature of three flats (B-flat, E-flat, A-flat). Measure 91 starts with a double bar line and a repeat sign, followed by a series of chords and eighth notes. Measure 92 continues with similar chordal patterns. Measure 93 features a series of chords with a long note on the final chord.

94

Musical notation for guitar, measure 94. The notation is in treble clef with a key signature of three flats (B-flat, E-flat, A-flat). The measure begins with a double bar line and a repeat sign, followed by a series of chords and eighth notes, ending with a long note on the final chord.

Bass

ABBA - Tiger

♩ = 131,499939

2

First system of bass notation, measures 1-4. It begins with a double bar line and a '2' above the staff. The notes are: G2, A2, B2, C3, D3, E3, F3, G3, A3, B3, C4, D4, E4, F4, G4, A4, B4, C5.

8

♩ = 134,000061

Second system of bass notation, measures 5-8. The notes are: D4, E4, F4, G4, A4, B4, C5, D5, E5, F5, G5, A5, B5, C6, D6, E6, F6, G6.

14

Third system of bass notation, measures 9-13. The notes are: G4, A4, B4, C5, D5, E5, F5, G5, A5, B5, C6, D6, E6, F6, G6, A6, B6, C7.

20

Fourth system of bass notation, measures 14-19. The notes are: G4, A4, B4, C5, D5, E5, F5, G5, A5, B5, C6, D6, E6, F6, G6, A6, B6, C7.

26

Fifth system of bass notation, measures 20-25. The notes are: G4, A4, B4, C5, D5, E5, F5, G5, A5, B5, C6, D6, E6, F6, G6, A6, B6, C7.

32

Sixth system of bass notation, measures 26-31. The notes are: G4, A4, B4, C5, D5, E5, F5, G5, A5, B5, C6, D6, E6, F6, G6, A6, B6, C7.

36

7

Seventh system of bass notation, measures 32-36. The notes are: G4, A4, B4, C5, D5, E5, F5, G5, A5, B5, C6, D6, E6, F6, G6, A6, B6, C7. The system ends with a double bar line and a '7' above the staff.

ABBA - Tiger

Choir

♩ = 131,499939 ♩ = 134,000061

8 7 2

22

9 2 10

47

2 9

64

2 10 2

82

2

88

2 6

Square

ABBA - Tiger

♪ = 131,499939 ♪ = 134,000061

8 33

43

30 24

1997