

Alan Jackson - Don't Rock The Jukebox 1

♩ = 154,000153

DRUMS

FINGERDBAS

VIOLIN

A.PIANO 1

10

DRUMS

FINGERDBAS

A.PIANO 1

17

DRUMS

FINGERDBAS

A.PIANO 1

24

DRUMS

FINGERDBAS

A.PIANO 1

31

DRUMS

FINGERDBAS

A.PIANO 1

38

DRUMS

FINGERDBAS

A.PIANO 1

43

DRUMS

FINGERDBAS

A.PIANO 1

47 3

DRUMS

FINGERDBAS

A.PIANO 1

51

DRUMS

FINGERDBAS

A.PIANO 1

55

DRUMS

FINGERDBAS

A.PIANO 1

60

DRUMS

FINGERDBAS

A.PIANO 1

65

DRUMS

FINGERDBAS

A.PIANO 1

71

DRUMS

FINGERDBAS

A.PIANO 1

79

DRUMS

FINGERDBAS

A.PIANO 1

85

DRUMS

FINGERDBAS

A.PIANO 1

92

DRUMS

FINGERDBAS

A.PIANO 1

100

DRUMS

FINGERDBAS

A.PIANO 1

106

DRUMS

FINGERDBAS

A.PIANO 1

114

DRUMS

FINGERDBAS

A.PIANO 1

121

DRUMS

FINGERDBAS

VIOLIN

A.PIANO 1

126

DRUMS

FINGERDBAS

VIOLIN

A.PIANO 1

130

DRUMS

FINGERDBAS

VIOLIN

A.PIANO 1

135

DRUMS

FINGERDBAS

VIOLIN

A.PIANO 1

140

DRUMS

FINGERDBAS

A.PIANO 1

145

DRUMS

FINGERDBAS

A.PIANO 1

150

DRUMS

FINGERDBAS

A.PIANO 1

156

DRUMS

FINGERDBAS

A.PIANO 1

163

DRUMS

FINGERDBAS

A.PIANO 1

170

DRUMS

FINGERDBAS

A.PIANO 1

178

DRUMS

FINGERDBAS

A.PIANO 1



184

DRUMS

FINGERDBAS

A.PIANO 1

190

DRUMS

FINGERDBAS

A.PIANO 1

Alan Jackson - Don't Rock The Jukebox 1

DRUMS

♩ = 154,000153

**6**

15

24

33

42

50

58

65

73

82

V.S.

DRUMS

91

Drum notation for measures 91-100. The notation consists of two staves: a top staff with 'x' marks representing drum hits and a bottom staff with a bass line. Measures 91-99 show a consistent pattern of hits on the top staff and a steady bass line. Measure 100 introduces a change in the top staff pattern.

100

Drum notation for measures 100-109. Measure 100 features a more complex top staff pattern with some hits marked with an asterisk. Measures 101-109 continue with a steady bass line and a consistent top staff pattern.

109

Drum notation for measures 109-118. Measures 109-117 show a steady bass line and a consistent top staff pattern. Measure 118 begins a new pattern with a different top staff arrangement.

118

Drum notation for measures 118-126. Measure 118 has a unique top staff pattern. Measures 119-126 feature a steady bass line and a consistent top staff pattern, with a triplet of hits marked '3' in measure 125.

126

Drum notation for measures 126-134. Measures 126-133 show a steady bass line and a consistent top staff pattern, with a triplet of hits marked '3' in measure 127. Measure 134 begins a new pattern.

134

Drum notation for measures 134-142. Measures 134-141 show a steady bass line and a consistent top staff pattern, with a triplet of hits marked '3' in measure 135. Measure 142 begins a new pattern.

142

Drum notation for measures 142-150. Measures 142-149 show a steady bass line and a consistent top staff pattern. Measure 150 begins a new pattern with a different top staff arrangement.

150

Drum notation for measures 150-158. Measure 150 has a unique top staff pattern. Measures 151-158 feature a steady bass line and a consistent top staff pattern.

158

Drum notation for measures 158-167. Measures 158-166 show a steady bass line and a consistent top staff pattern. Measure 167 begins a new pattern.

167

Drum notation for measures 167-176. Measures 167-175 show a steady bass line and a consistent top staff pattern. Measure 176 begins a new pattern.

DRUMS

176

Musical notation for drum set from measure 176 to 183. The notation is on a single staff with a double bar line at the beginning. It features a consistent rhythmic pattern of eighth notes with 'x' marks above them, indicating cymbal hits. The bass drum part consists of quarter notes and eighth notes.

184

Musical notation for drum set from measure 184 to 189. The notation is on a single staff with a double bar line at the beginning. It features a consistent rhythmic pattern of eighth notes with 'x' marks above them, indicating cymbal hits. The bass drum part includes a triplet of eighth notes in the first measure, marked with a '3' below it.

190

Musical notation for drum set from measure 190 to 196. The notation is on a single staff with a double bar line at the beginning. It features a consistent rhythmic pattern of eighth notes with 'x' marks above them, indicating cymbal hits. The bass drum part consists of quarter notes and eighth notes.

♩ = 154,000153

7

16

26

36

2

48

60

67

73



83



93



103



113



125



137



149



159



169



180



189



VIOLIN

Alan Jackson - Don't Rock The Jukebox 1

♩ = 154,000153

**119**

Musical notation for measure 119, featuring a treble clef, 2/4 time signature, and a tempo marking of ♩ = 154,000153. The measure contains a whole rest, a triplet of eighth notes, a quarter note, a half note, a whole rest, and a quarter note.

126

Musical notation for measure 126, featuring a treble clef and 2/4 time signature. The measure contains a quarter note, a quarter note, a quarter note, a quarter note, a quarter note, a quarter note, a quarter note, a quarter note, a quarter note, and a quarter note.

132

**61**

Musical notation for measure 132, featuring a treble clef and 2/4 time signature. The measure contains a quarter note, a quarter note, a quarter note, a quarter note, a quarter note, a quarter note, a quarter note, a quarter note, a quarter note, and a quarter note.



Alan Jackson - Don't Rock The Jukebox 1

A.PIANO 1

♩ = 154,000153

7

16

26

37

44

49

54

62

68

73



83



93



104



114



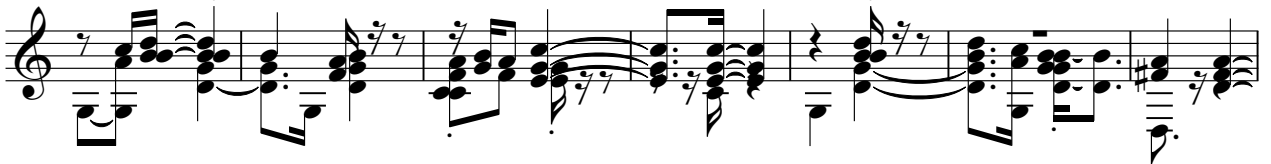
124



133



141



148



158



169



180



188

