

Alan Jackson - Gone Country

♩ = 126,000130

Drum Standard
Guitare
Guitare
Guitare
Guitare
Basse 1
Violon
Piano
Piano

Detailed description: This system contains the first six staves of the musical score. The top staff is for Drum Standard, showing a steady 4/4 drum pattern with 'x' marks for cymbals. The four guitar staves show various rhythmic patterns and chordal accompaniment. The bass line (Basse 1) provides a steady accompaniment. The violin and piano parts are currently silent, indicated by a large 'x' on their staves. A tempo marking '♩ = 126,000130' is placed above the first two staves.

7

Drum Standard
Guitare
Guitare
Guitare
Guitare
Basse 1
Piano

Detailed description: This system contains the next six staves of the musical score, starting at measure 7. The drum pattern continues. The guitar parts become more active, with the top guitar staff featuring a melodic line. The bass line continues its accompaniment. The piano part is now active, providing harmonic support. The tempo marking '7' is placed above the first staff.



11

Drum Standard

Guitare

Guitare

Guitare

Basse 1

Piano

Detailed description: This system covers measures 11 through 14. The Drum Standard part features a consistent rhythmic pattern of eighth notes. The first Guitare part has a melodic line with some chromaticism. The second Guitare part provides harmonic support with chords and some melodic fragments. The third Guitare part has a more active role with a melodic line. The Basse 1 part has a steady bass line. The Piano part features a complex texture with many beamed notes and rests.



15

Drum Standard

Guitare

Guitare

Guitare

Basse 1

Piano

Detailed description: This system covers measures 15 through 18. The Drum Standard part continues with the same eighth-note pattern. The first Guitare part has a melodic line. The second Guitare part has a more active role with a melodic line. The third Guitare part provides harmonic support with chords. The Basse 1 part has a steady bass line. The Piano part features a complex texture with many beamed notes and rests.



19

Drum Standard

Guitare

Guitare

Guitare

Basse 1

Piano

Detailed description: This system covers measures 19 through 22. The Drum Standard part continues with the same eighth-note pattern. The first Guitare part has a melodic line. The second Guitare part has a more active role with a melodic line. The third Guitare part provides harmonic support with chords. The Basse 1 part has a steady bass line. The Piano part features a complex texture with many beamed notes and rests.

23

Drum Standard

Guitare

Guitare

Guitare

Guitare

Basse 1

Violon

Piano

3

Detailed description: This system of musical notation covers measures 23 to 26. It features seven staves: Drum Standard (top), four Guitare staves, Basse 1, Violon, and Piano (bottom). The Drum Standard part shows a consistent rhythmic pattern of eighth notes. The Guitare parts include various melodic lines and chordal textures, with some triplets indicated by a '3' over a group of notes. The Basse 1 part provides a steady bass line. The Violon and Piano parts are mostly silent, with some light accompaniment in the piano part.



27

Drum Standard

Guitare

Guitare

Guitare

Guitare

Basse 1

Vocaliste

Violon

Piano

3

Detailed description: This system of musical notation covers measures 27 to 30. It features eight staves: Drum Standard, four Guitare staves, Basse 1, Vocaliste, Violon, and Piano. The Drum Standard part continues with its rhythmic pattern. The Guitare parts show more complex textures, including some tremolos and triplets. The Basse 1 part continues with its bass line. The Vocaliste part has a few notes at the end of the system. The Violon and Piano parts have some accompaniment, with the piano part featuring some triplets.

31

Drum Standard

Guitare

Guitare

Guitare

Guitare

Basse 1

Vocaliste

Violon

Piano



35

Drum Standard

Guitare

Guitare

Guitare

Guitare

Basse 1

Vocaliste

Violon

Piano

40

Drum Standard

Guitare

Guitare

Guitare

Guitare

Basse 1

Piano

44

Drum Standard

Guitare

Guitare

Guitare

Basse 1

Violon

Piano

48

Drum Standard

Guitare

Guitare

Guitare

Basse 1

Violon

Piano

52

Drum Standard

Guitare

Guitare

Guitare

Basse 1

Violon

Piano

56

Drum Standard

Guitare

Guitare

Guitare

Basse 1

Piano

60

Drum Standard

Guitare

Guitare

Guitare

Guitare

Basse 1

Vocaliste

Piano

3

3

63 7

Drum Standard

Guitare

Guitare

Guitare

Guitare

Basse 1

Vocaliste

Violon

Piano



67

Drum Standard

Guitare

Guitare

Guitare

Guitare

Basse 1

Vocaliste

Violon

Piano

71

Drum Standard

Guitare

Guitare

Guitare

Guitare

Basse 1

Violon

Piano

Detailed description: This musical score block covers measures 71 through 74. It features seven staves: Drum Standard (top), four Guitare staves, Basse 1 (bass), Violon (violin), and Piano (bottom). The Drum Standard part shows a consistent rhythmic pattern with 'x' marks indicating cymbal hits. The Guitare parts include complex chordal textures and melodic lines. The Basse 1 part provides a steady bass line. The Violon part is mostly silent, indicated by a horizontal line. The Piano part features intricate chordal accompaniment with many beamed notes.



75

Drum Standard

Guitare

Guitare

Guitare

Guitare

Basse 1

Piano

Detailed description: This musical score block covers measures 75 through 78. It features the same seven staves as the previous block. The Drum Standard part continues with its rhythmic pattern. The Guitare parts show more complex textures, including some sustained chords and melodic fragments. The Basse 1 part continues with its bass line. The Violon part remains silent. The Piano part continues with its intricate accompaniment, featuring some sustained chords and melodic lines.

79

Drum Standard

Guitare

Guitare

Guitare

Guitare

Basse 1

Piano

Piano

83

Drum Standard

Guitare

Guitare

Guitare

Basse 1

Piano

Piano

87

Drum Standard

Guitare

Guitare

Guitare

Basse 1

Piano

Piano

91

Drum Standard

Guitare

Guitare

Guitare

Basse 1

Piano

Piano

Detailed description: This musical score covers measures 91 to 94. The Drum Standard part features a consistent rhythmic pattern of eighth notes. The three Guitare parts are highly active, with the top two playing melodic lines and the bottom one playing dense chordal textures. The Basse 1 part provides a steady bass line. The Piano part includes both melodic and chordal accompaniment.



95

Drum Standard

Guitare

Guitare

Guitare

Guitare

Basse 1

Vocaliste

Piano

Detailed description: This musical score covers measures 95 to 98. The Drum Standard part continues with its rhythmic pattern. The Guitare parts show a change in texture, with the top two playing more melodic and the bottom two playing sustained chords. The Basse 1 part continues its bass line. The Vocaliste part has a long rest followed by a final note. The Piano part features a melodic line with chordal accompaniment.

99

Drum Standard
Guitare
Guitare
Guitare
Guitare
Basse 1
Vocaliste
Violon
Piano

This musical score covers measures 99 to 102. It features a drum part with a consistent rhythmic pattern. The guitar section consists of four staves, with the top two playing melodic lines and the bottom two playing chords. The bass line is a simple eighth-note pattern. The vocal part has long, sustained notes, and the violin and piano parts provide harmonic support.



103

Drum Standard
Guitare
Guitare
Guitare
Guitare
Basse 1
Vocaliste
Violon
Piano

This musical score covers measures 103 to 106. The drum part continues with the same pattern. The guitar section shows more complex chordal textures, with some staves playing sustained chords. The bass line remains consistent. The vocal part has long, sustained notes, and the violin and piano parts provide harmonic support.

107

Drum Standard

Guitare

Basse 1

Vocaliste

Piano



111

Drum Standard

Guitare

Guitare

Guitare

Basse 1

Vocaliste

Violon

Piano

114

Drum Standard

Guitare

Guitare

Guitare

Guitare

Basse 1

Vocaliste

Violon

Piano



118

Drum Standard

Guitare

Guitare

Guitare

Guitare

Basse 1

Vocaliste

Violon

Piano

122

Drum Standard

Guitare

Guitare

Guitare

Guitare

Basse 1

Vocaliste

Violon

Piano



125

Drum Standard

Guitare

Guitare

Guitare

Guitare

Basse 1

Vocaliste

Violon

Piano

129

Drum Standard

Guitare

Guitare

Guitare

Guitare

Basse 1

Vocaliste

Violon

Piano



133

Drum Standard

Guitare

Guitare

Guitare

Guitare

Basse 1

Vocaliste

Piano

Drum Standard

Guitare

Guitare

Guitare

Guitare

Basse 1

Vocaliste

Violon

Piano

Piano

This musical score page contains ten staves for different instruments. The top staff is for 'Drum Standard', which is mostly empty with a few rests. The first four staves are for 'Guitare', each showing complex chordal textures with many notes and slurs. The fifth staff is for 'Basse 1', showing a few notes with slurs. The sixth staff is for 'Vocaliste', with a few notes and slurs. The seventh staff is for 'Violon', which is mostly empty. The eighth and ninth staves are for 'Piano', with the eighth staff showing complex chordal textures and the ninth staff being mostly empty. The score is written in a standard musical notation style with treble and bass clefs.

Alan Jackson - Gone Country

Drum Standard

♩ = 126,000130

2

7

11

15

19

23

27

31

35

39

V.S.

43

47

51

55

59

63

67

71

75

79

83

Measure 83: Fourteenth notes on the top staff, quarter notes on the bottom staff.

87

Measure 87: Fourteenth notes on the top staff, quarter notes on the bottom staff.

91

Measure 91: Fourteenth notes on the top staff, quarter notes on the bottom staff.

95

Measure 95: Fourteenth notes on the top staff, quarter notes on the bottom staff.

99

Measure 99: Fourteenth notes on the top staff, quarter notes on the bottom staff.

103

Measure 103: Fourteenth notes on the top staff, quarter notes on the bottom staff.

107

Measure 107: Fourteenth notes on the top staff, quarter notes on the bottom staff.

110

Measure 110: Fourteenth notes on the top staff, quarter notes on the bottom staff.

114

Measure 114: Fourteenth notes on the top staff, quarter notes on the bottom staff.

118

Measure 118: Fourteenth notes on the top staff, quarter notes on the bottom staff.

V.S.

Drum Standard

122

Musical notation for drum set, measures 122-125. The notation is on a five-line staff with a double bar line at the beginning. It features a complex rhythmic pattern with many 'x' marks above the staff, indicating cymbal or snare hits. The bass drum part is written with quarter and eighth notes.

126

Musical notation for drum set, measures 126-129. The notation is on a five-line staff with a double bar line at the beginning. It features a complex rhythmic pattern with many 'x' marks above the staff, indicating cymbal or snare hits. The bass drum part is written with quarter and eighth notes.

130

Musical notation for drum set, measures 130-133. The notation is on a five-line staff with a double bar line at the beginning. It features a complex rhythmic pattern with many 'x' marks above the staff, indicating cymbal or snare hits. The bass drum part is written with quarter and eighth notes.

133

Musical notation for drum set, measures 133-135. The notation is on a five-line staff with a double bar line at the beginning. It features a complex rhythmic pattern with many 'x' marks above the staff, indicating cymbal or snare hits. The bass drum part is written with quarter and eighth notes. The notation ends with a double bar line and a '2' above the staff, indicating a double bar line.

Alan Jackson - Gone Country

Guitare

♩ = 126,000130

6

10

14

18

22

26

32

35

39

42

V.S.

Musical score for guitar, measures 45-78. The score is written in treble clef and features a complex rhythmic pattern with frequent rests and slurs. The notation includes various note values (quarter, eighth, and sixteenth notes), rests, and slurs. The key signature is one sharp (F#). The score is divided into systems, with measure numbers 45, 48, 51, 54, 57, 62, 66, 70, 74, and 78 indicated at the beginning of each system. The music consists of a single melodic line with a steady accompaniment of chords and rests.

82

85

88

92

97

102

104

111



114



118



122



125



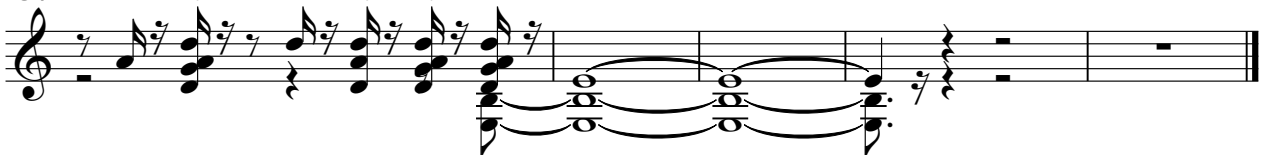
128



132



134



Alan Jackson - Gone Country

Guitare

♩ = 126,000130

The image displays a guitar score for the song "Gone Country" by Alan Jackson. It consists of ten staves of music in 4/4 time. The score includes various musical notations such as chords, single notes, and rests. Bar numbers are indicated at the beginning of each staff: 5, 11, 28, 35, 42, 64, 71, 76, 96, and 101. Some staves feature large blacked-out bars representing barre positions, with numbers 10, 17, 16, and 12 placed above them. The tempo is marked as ♩ = 126,000130.

2

Guitare

117

3

125

130

133

Alan Jackson - Gone Country

Guitare

♩ = 126,000130

6

11

17

22

27

32

38

44

49

54

V.S.

59

64

70

76

82

88

93

97

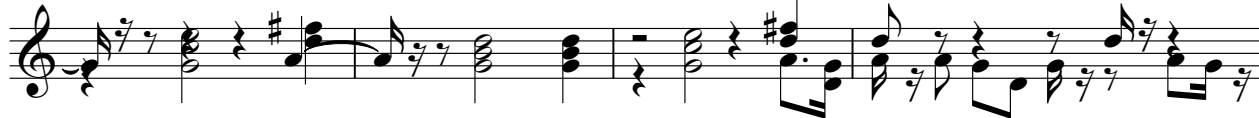
103

112

117



122



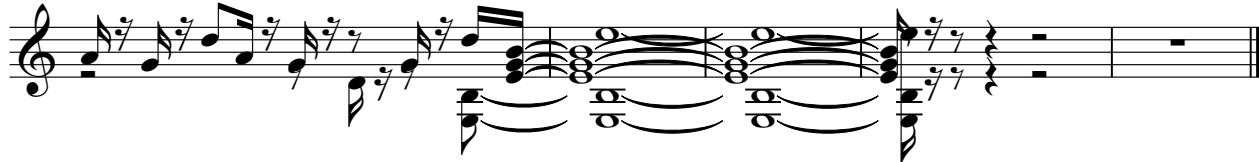
126



131



134



Alan Jackson - Gone Country

Guitare

♩ = 126,000130

5

9

13

17

21

25

31

37

42

V.S.

Detailed description: This is a guitar score for the song 'Gone Country' by Alan Jackson. The score is written in 4/4 time with a tempo of 126,000130. It consists of ten staves of music. The first staff begins with a whole rest, followed by a series of chords and eighth notes. The subsequent staves contain complex guitar techniques, including triplets (marked with a '3' over a group of notes) and various chord voicings. The score concludes with a 'V.S.' (Verso) marking at the end of the final staff.

This image displays ten staves of guitar sheet music, numbered 46 through 91. The music is written in a single system on a grand staff (treble clef). The notation includes various rhythmic values, accidentals, and dynamic markings. The first staff (46) begins with a 7/8 time signature. The music features a mix of eighth and sixteenth notes, often beamed together, and includes several instances of slurs and ties. The notation is dense, with many notes beamed together in groups. The staves are numbered 46, 50, 54, 58, 64, 70, 75, 81, 86, and 91, indicating the starting measure for each line. The music concludes with a double bar line and repeat dots at the end of the final staff.

97

102

107

111

115

119

123

126

130

134

123



128



133



Alan Jackson - Gone Country

Vocaliste

♩ = 126,000130

29

34

62

68

99

105

114

120

126

132

29

23

27

3

2

Violon

Alan Jackson - Gone Country

♩ = 126,000130

24

31 2

38 6 2

49 3

56 7

67 28

100

105 4

113 2

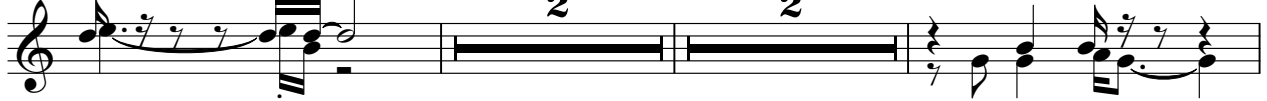
2

Violon

119



124



130



Alan Jackson - Gone Country

Piano

♩ = 126,000130

6

10

15

19

23

27

31

36

41

45

V.S.

Musical score for piano, measures 49-91. The score is written in treble clef with a key signature of one sharp (F#). The tempo is marked 'Piano'. The score consists of ten systems of music, each with a measure number on the left. The notation includes various rhythmic values, accidentals, and articulation marks. Measure 61 features a triplet of eighth notes. Measure 64 features a triplet of eighth notes. Measure 74 features a triplet of eighth notes. Measure 84 features a double bar line with a '2' above it, indicating a second ending. Measure 91 features a double bar line with a '5' above it, indicating a fifth ending.

Musical score for piano, measures 99-135. The score is written in treble clef with a key signature of one sharp (F#). The time signature is 3/4. The music features a complex texture with multiple voices, including a prominent melodic line in the upper register and dense chordal accompaniment in the lower register. Measure 103 includes a triplet of eighth notes. Measure 135 ends with a final chord and a fermata.

Piano

Alan Jackson - Gone Country

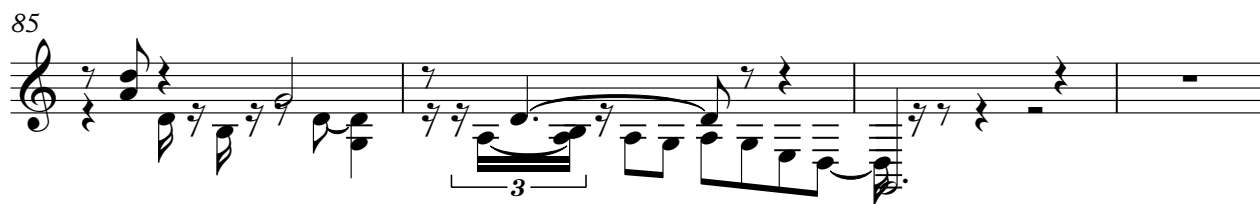
♩ = 126,000130

80

2



85



89



93



96

39

