

# Alleen Gaan - Ode to joy

$\text{♩} = 128,000000$

High Melody

Treble Melody

Base Melody

6

High Melody

Treble Melody

Base Melody

11

High Melody

Treble Melody

Base Melody

15

High Melody

Treble Melody

Base Melody

20

High Melody

Treble Melody

Base Melody

This system contains measures 20 through 24. The High Melody staff uses a treble clef and contains a sequence of chords and single notes, including a half note G4 with a sharp sign. The Treble Melody staff also uses a treble clef and contains a similar sequence of chords and notes. The Base Melody staff uses a treble clef and contains a bass line with chords and single notes, including a half note G2 with a sharp sign.

25

High Melody

Treble Melody

Base Melody

This system contains measures 25 through 28. The High Melody staff continues with chords and notes, including a half note G4 with a sharp sign. The Treble Melody staff continues with chords and notes. The Base Melody staff continues with chords and notes, including a half note G2 with a sharp sign.

29

High Melody

Treble Melody

Base Melody

This system contains measures 29 through 32. The High Melody staff continues with chords and notes, including a half note G4 with a sharp sign. The Treble Melody staff continues with chords and notes. The Base Melody staff continues with chords and notes, including a half note G2 with a sharp sign.

33

High Melody

Treble Melody

Base Melody

This system contains measures 33 through 36. The High Melody staff continues with chords and notes, including a half note G4 with a sharp sign. The Treble Melody staff continues with chords and notes. The Base Melody staff continues with chords and notes, including a half note G2 with a sharp sign.



57

High Melody

Treble Melody

Base Melody

61

High Melody

Treble Melody

Base Melody

65

High Melody

Treble Melody

Base Melody

69

High Melody

Treble Melody

Base Melody

72

High Melody



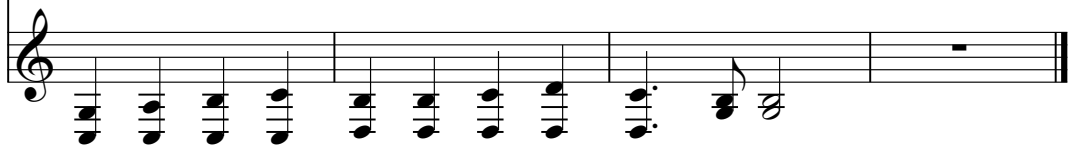
Musical staff for High Melody, starting at measure 72. The staff contains a sequence of chords and notes: a D major triad (D, F#, A), an E major triad (E, G#, B), an F# major triad (F#, A, C#), and a G major triad (G, B, D). This is followed by a half note G, a half note A, and a whole rest.

Treble Melody



Musical staff for Treble Melody, starting at measure 72. The staff contains a sequence of chords and notes: a D major triad (D, F#, A), an E major triad (E, G#, B), an F# major triad (F#, A, C#), and a G major triad (G, B, D). This is followed by a half note G, a half note A, and a whole rest.

Base Melody



Musical staff for Base Melody, starting at measure 72. The staff contains a sequence of chords and notes: a D major triad (D, F#, A), an E major triad (E, G#, B), an F# major triad (F#, A, C#), and a G major triad (G, B, D). This is followed by a half note G, a half note A, and a whole rest.

Alleen Gaan - Ode to joy  
High Melody

♩ = 128,000000

2

8

14

20

26

31

37

43

48

54

V.S.



Alleen Gaan - Ode to joy  
Treble Melody

♩ = 128,000000

2

8

14

20

26

31

37

43

48

54

V.S.



2

### Treble Melody

60



65



70



Alleen Gaan - Ode to joy  
Base Melody

♩ = 128,000000

2

8

13

18

24

29

34

40

45

50

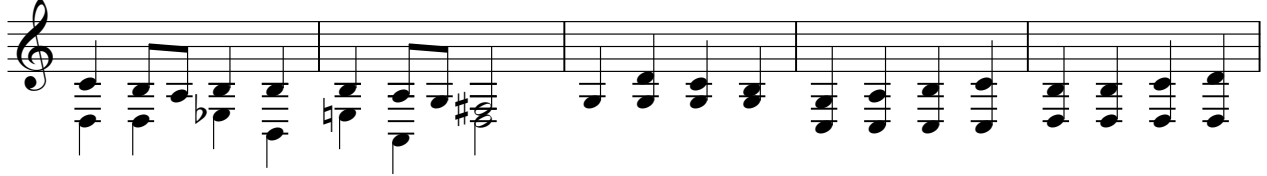
V.S.

Base Melody

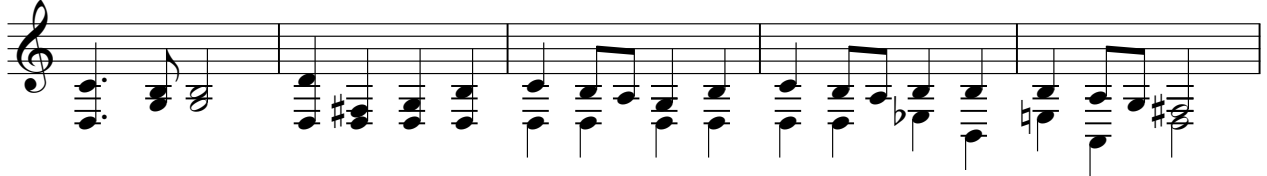
56



61



66



71

