

Andr - Thank You For Being A Friend

♩ = 117,000114

Staff-2

Staff-3

Staff-4

4

Staff-5

Staff-2

Staff-3

Staff-4

7

Staff-5

Staff-2

Staff-3

Staff-4

Copyright © 1998 by Chris Rada
All Rights Reserved

10

Staff-5: Treble clef, B-flat key signature. Melody line with eighth and quarter notes, ending with a quarter rest.

Staff-1: Drum set notation with snare and hi-hat patterns.

Staff-2: Bass clef, eighth-note bass line.

Staff-3: Treble clef, guitar accompaniment with chords and melodic fragments.

Staff-4: Bass clef, guitar accompaniment with dense chordal textures.

13

Staff-5: Treble clef, B-flat key signature. Melody line with eighth and quarter notes.

Staff-1: Drum set notation with snare and hi-hat patterns.

Staff-2: Bass clef, eighth-note bass line.

Staff-3: Treble clef, guitar accompaniment with chords and melodic fragments.

Staff-4: Bass clef, guitar accompaniment with dense chordal textures.

16

Staff-5: Treble clef, melodic line with eighth and quarter notes.

Staff-1: Drum set notation with 'x' marks for snare and 'o' for cymbal.

Staff-2: Bass clef, simple bass line with quarter notes.

Staff-3: Treble clef, mostly rests with some melodic fragments.

Staff-4: Treble clef, dense chordal accompaniment with many beamed notes.

19

Staff-5: Treble clef, melodic line with rests and eighth notes.

Staff-1: Drum set notation with 'x' marks for snare and 'o' for cymbal.

Staff-2: Bass clef, bass line with eighth notes and chords.

Staff-6: Bass clef, simple bass line with quarter notes.

Staff-7: Bass clef, chordal accompaniment with sustained notes.

Staff-3: Treble clef, mostly rests.

Staff-4: Treble clef, dense chordal accompaniment with many beamed notes.

22

Staff-5: Treble clef, melodic line with eighth and quarter notes.
Staff-1: Rhythm guitar with 'x' marks for muted notes.
Staff-2: Rhythm guitar with eighth and quarter notes.
Staff-6: Bass clef, melodic line with eighth and quarter notes.
Staff-7: Bass clef, chordal accompaniment with a long slur.
Staff-4: Treble clef, chordal accompaniment with eighth and quarter notes.

25

Staff-5: Treble clef, melodic line with eighth and quarter notes.
Staff-1: Rhythm guitar with 'x' marks for muted notes.
Staff-2: Rhythm guitar with eighth and quarter notes.
Staff-6: Bass clef, melodic line with eighth and quarter notes.
Staff-7: Bass clef, chordal accompaniment with eighth and quarter notes.
Staff-4: Treble clef, chordal accompaniment with eighth and quarter notes.

28

Staff-5

Staff-1

Staff-2

Staff-6

Staff-7

Staff-4

31

Staff-5

Staff-1

Staff-2

Staff-6

Staff-7

Staff-4

35

Staff-5

Staff-1

Staff-2

Staff-6

Staff-7

Staff-3

Staff-4

38

Staff-5

Staff-1

Staff-2

Staff-6

Staff-7

Staff-3

Staff-4

Detailed description: This musical score page contains seven staves, labeled Staff-1 through Staff-7, with a measure number '38' at the top left. Staff-5 is in treble clef with a key signature of one flat (B-flat) and contains a melodic line starting with a whole rest, followed by eighth notes G4, A4, B4, C5, B4, A4, and a final whole rest. Staff-1 is in alto clef with a key signature of one flat and contains a guitar-style line with 'x' marks above notes, indicating natural harmonics. Staff-2 is in alto clef with a key signature of one flat and contains a bass line with eighth notes. Staff-6 is in bass clef with a key signature of one flat and contains a bass line with eighth notes. Staff-7 is in bass clef with a key signature of one flat and contains a chordal accompaniment with a long sustain. Staff-3 is in treble clef with a key signature of one flat and contains a complex melodic line with many beamed notes. Staff-4 is in treble clef with a key signature of one flat and contains a complex accompaniment with many beamed notes.

41

Staff-5

Staff-1

Staff-2

Staff-6

Staff-7

Staff-3

Staff-4

44

Staff-5

Staff-1

Staff-2

Staff-6

Staff-7

Staff-3

Staff-4

47

Staff-5

Staff-1

Staff-2

Staff-6

Staff-7

Staff-3

Staff-4

50

Staff-5

Staff-1

Staff-2

Staff-6

Staff-7

Staff-3

Staff-4

59

Staff-5: Treble clef, melodic line with eighth and sixteenth notes.

Staff-1: Drum set notation with asterisks and 'x' marks for snare and cymbal hits.

Staff-2: Drum set notation with eighth and sixteenth notes.

Staff-6: Bass clef, melodic line with eighth and sixteenth notes.

Staff-7: Bass clef, chordal accompaniment with beamed eighth notes.

Staff-4: Treble clef, chordal accompaniment with beamed eighth notes.

62

Staff-5: Treble clef, melodic line with eighth and sixteenth notes, including a rest.

Staff-1: Drum set notation with asterisks and 'x' marks for snare and cymbal hits.

Staff-2: Drum set notation with eighth and sixteenth notes.

Staff-6: Bass clef, melodic line with eighth and sixteenth notes.

Staff-7: Bass clef, chordal accompaniment with beamed eighth notes and a long slur.

Staff-4: Treble clef, chordal accompaniment with beamed eighth notes.

65

Staff-5

Staff-1

Staff-2

Staff-6

Staff-7

Staff-4

68

Staff-5

Staff-1

Staff-2

Staff-6

Staff-7

Staff-4

71

Staff-5: Treble clef, two measures of music. Measure 1 has a whole note chord. Measure 2 has a whole note chord with a 7th fret barre. Staff-1: Treble clef, guitar tablature with 'x' marks for muted strings and fret numbers. Staff-2: Treble clef, guitar tablature with fret numbers and a 7th fret barre. Staff-6: Bass clef, two measures of music. Staff-7: Bass clef, two measures of music with a long slur over both. Staff-4: Treble clef, two measures of music with chords.

73

Staff-5: Treble clef, two measures of music. Measure 1 has a long slur over a whole note chord. Measure 2 has a whole note chord with a 7th fret barre. Staff-1: Treble clef, guitar tablature with 'x' marks and fret numbers. Staff-6: Bass clef, two measures of music with a long slur over both. Staff-7: Bass clef, two measures of music with a long slur over both. Staff-4: Treble clef, two measures of music with chords.

75

Staff-5: Treble clef, key signature of one flat. Measure 75: whole note chord. Measure 76: half note chord, quarter note G4, quarter note A4. Measure 77: quarter note G4, quarter note A4, quarter note B4, quarter note C5.

Staff-1: Percussion staff. Measure 75: two cymbal hits. Measure 76: fourteenth note pattern. Measure 77: quarter note pattern.

Staff-6: Bass clef, key signature of one flat. Measure 75: whole note chord. Measure 76: whole note chord. Measure 77: whole note chord.

Staff-7: Bass clef, key signature of one flat. Measure 75: eighth note pattern. Measure 76: eighth note pattern. Measure 77: eighth note pattern.

Staff-4: Treble clef, key signature of one flat. Measure 75: eighth note pattern. Measure 76: eighth note pattern. Measure 77: eighth note pattern.

77

Staff-5: Treble clef, key signature of one flat and one sharp. Measure 77: whole note chord. Measure 78: half note chord, quarter note G4, quarter note A4. Measure 79: quarter note G4, quarter note A4, quarter note B4, quarter note C5.

Staff-1: Percussion staff. Measure 77: two cymbal hits. Measure 78: fourteenth note pattern. Measure 79: quarter note pattern.

Staff-6: Bass clef, key signature of one flat and one sharp. Measure 77: whole note chord. Measure 78: whole note chord. Measure 79: whole note chord.

Staff-7: Bass clef, key signature of one flat and one sharp. Measure 77: eighth note pattern. Measure 78: eighth note pattern. Measure 79: eighth note pattern.

Staff-4: Treble clef, key signature of one flat and one sharp. Measure 77: eighth note pattern. Measure 78: eighth note pattern. Measure 79: eighth note pattern.

79

Staff-5: Treble clef, melodic line with a long slur over two measures.
Staff-1: Drum set notation with a snare drum and cymbal.
Staff-6: Bass clef, melodic line with a long slur over two measures.
Staff-7: Bass clef, melodic line with a long slur over two measures.
Staff-4: Treble clef, accompaniment line with chords.

81

Staff-5: Treble clef, melodic line with a long slur over two measures.
Staff-1: Drum set notation with a snare drum and cymbal.
Staff-6: Bass clef, melodic line with a long slur over two measures.
Staff-7: Bass clef, melodic line with a long slur over two measures.
Staff-4: Treble clef, accompaniment line with chords.

83

Staff-5: Treble clef, key signature of one flat. Measure 83: whole note chord. Measure 84: whole note chord. Measure 85: quarter note chord, quarter note chord, quarter note chord, quarter note chord.

Staff-1: Treble clef. Measure 83: whole note chord. Measure 84: whole note chord. Measure 85: quarter note chord, quarter note chord, quarter note chord, quarter note chord.

Staff-6: Bass clef, key signature of one flat. Measure 83: whole note chord. Measure 84: whole note chord. Measure 85: quarter note chord, quarter note chord.

Staff-7: Bass clef, key signature of one flat. Measure 83: whole note chord. Measure 84: whole note chord. Measure 85: quarter note chord, quarter note chord, quarter note chord, quarter note chord.

Staff-4: Treble clef, key signature of one flat. Measure 83: quarter note chord, quarter note chord, quarter note chord, quarter note chord. Measure 84: quarter note chord, quarter note chord, quarter note chord, quarter note chord. Measure 85: quarter note chord, quarter note chord, quarter note chord, quarter note chord.

85

Staff-5: Treble clef, key signature of one sharp. Measure 85: whole note chord. Measure 86: whole note chord. Measure 87: quarter note chord, quarter note chord, quarter note chord, quarter note chord.

Staff-1: Treble clef. Measure 85: whole note chord. Measure 86: whole note chord. Measure 87: quarter note chord, quarter note chord, quarter note chord, quarter note chord.

Staff-2: Treble clef. Measure 85: whole note chord. Measure 86: whole note chord. Measure 87: quarter note chord, quarter note chord, quarter note chord, quarter note chord.

Staff-6: Bass clef, key signature of one sharp. Measure 85: whole note chord. Measure 86: whole note chord. Measure 87: quarter note chord, quarter note chord.

Staff-7: Bass clef, key signature of one sharp. Measure 85: whole note chord. Measure 86: whole note chord. Measure 87: quarter note chord, quarter note chord, quarter note chord, quarter note chord.

Staff-4: Treble clef, key signature of one sharp. Measure 85: quarter note chord, quarter note chord, quarter note chord, quarter note chord. Measure 86: quarter note chord, quarter note chord, quarter note chord, quarter note chord. Measure 87: quarter note chord, quarter note chord, quarter note chord, quarter note chord.

88

Staff-5: Treble clef, melodic line with eighth notes and rests.

Staff-1: Drum set notation with 'x' marks for cymbals.

Staff-2: Drum set notation with eighth notes and rests.

Staff-6: Bass clef, melodic line with eighth notes and rests.

Staff-7: Bass clef, chordal accompaniment with slurs.

Staff-4: Treble clef, chordal accompaniment with slurs.

91

Staff-1: Drum set notation with 'x' marks for cymbals.

Staff-2: Drum set notation with eighth notes and rests.

Staff-6: Bass clef, melodic line with eighth notes and rests.

Staff-7: Bass clef, chordal accompaniment with slurs.

Staff-4: Treble clef, chordal accompaniment with slurs.

94

Staff-1: Guitar tablature with asterisks above notes. Staff-2: Rhythmic accompaniment. Staff-6: Bass line. Staff-7: Bass line with slurs. Staff-4: Treble clef accompaniment.

97

Staff-1: Guitar tablature with asterisks above notes. Staff-2: Rhythmic accompaniment. Staff-6: Bass line. Staff-7: Bass line with slurs. Staff-4: Treble clef accompaniment.

100

Staff-1

Staff-2

Staff-6

Staff-7

Staff-4

The image displays a musical score for guitar, consisting of five staves. Staff 1 is a guitar tablature staff, starting at measure 100, with fret numbers (1, 2, 3, 4, 5, 6, 7, 8) and asterisks indicating barre positions. Staff 2 is a rhythmic staff showing a sequence of chords and notes. Staff 6 is a bass line staff in bass clef. Staff 7 is a tenor line staff in alto clef. Staff 4 is a treble line staff in treble clef, showing chords and melodic fragments. The score is divided into measures by vertical bar lines.

Andr - Thank You For Being A Friend

Staff-5

♩ = 117,000114

4

9

14

19

24

28

33

3

40

45

50

Copyright © 1998 by Chris Rada
All Rights Reserved

55



60



64



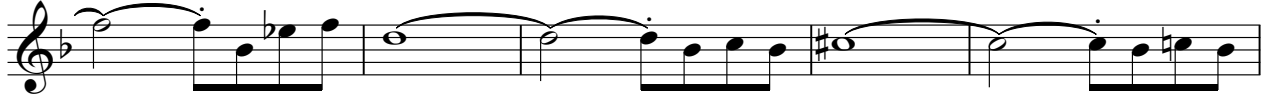
69



75



82



87



Andr - Thank You For Being A Friend

Staff-1

♩ = 117,000114

11



15



19



23



27



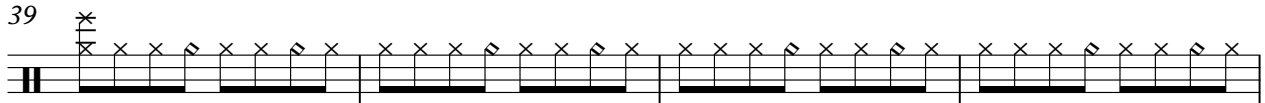
31



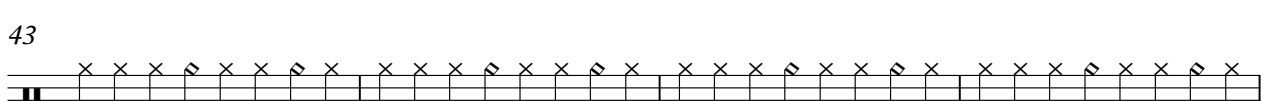
35



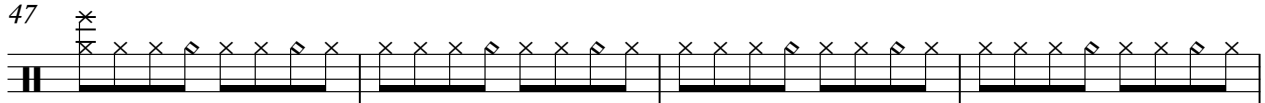
39



43



47



51

55

59

63

67

71

77

84

90

94

Andr - Thank You For Being A Friend

Staff-2

♩ = 117,000114



6



11



17



22



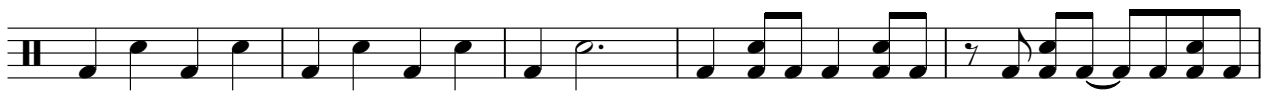
26



30



36



41



45



Copyright © 1998 by Chris Rada
All Rights Reserved

V.S.

49



53



57



61



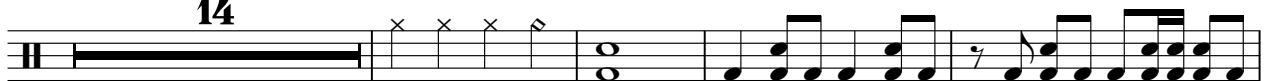
65



69



73



91



95



99



14

Andr - Thank You For Being A Friend

Staff-6

♩ = 117,000114

19



23



28



33



38



43



48



53



58



63



Copyright © 1998 by Chris Rada
All Rights Reserved

V.S.

68



73



82



89



94



98



Andr - Thank You For Being A Friend

Staff-7

♩ = 117,000114

19



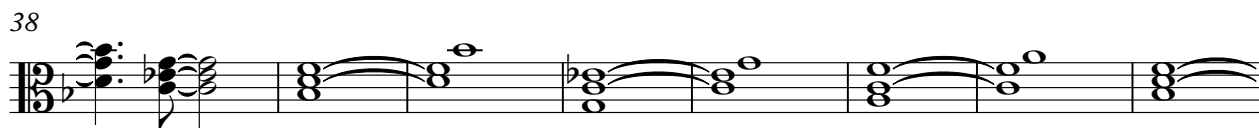
25



31



38



46



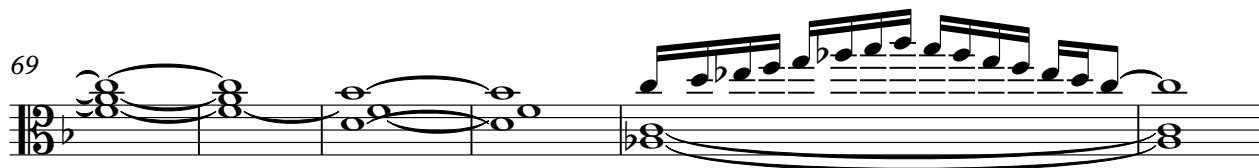
54



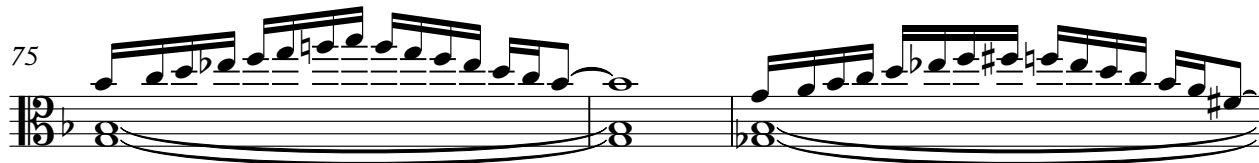
61



69



75



78



Copyright © 1998 by Chris Rada
All Rights Reserved

V.S.

2

Staff-7

81

Musical staff 7, measures 81-83. The staff is in bass clef with a key signature of two flats (Bb, Eb) and a time signature of 8/8. The music features a melodic line of eighth notes with slurs and ties, and a bass line of sustained octaves marked with '8'.

84

Musical staff 7, measures 84-86. The staff is in bass clef with a key signature of two flats (Bb, Eb) and a time signature of 8/8. The music features a melodic line of eighth notes with slurs and ties, and a bass line of sustained octaves marked with '8'. Measure 86 ends with a double bar line.

89

Musical staff 7, measures 89-91. The staff is in bass clef with a key signature of two flats (Bb, Eb) and a time signature of 8/8. The music features a melodic line of eighth notes with slurs and ties, and a bass line of sustained octaves marked with '8'.

95

Musical staff 7, measures 95-97. The staff is in bass clef with a key signature of two flats (Bb, Eb) and a time signature of 8/8. The music features a melodic line of eighth notes with slurs and ties, and a bass line of sustained octaves marked with '8'.

99

Musical staff 7, measures 99-101. The staff is in bass clef with a key signature of two flats (Bb, Eb) and a time signature of 8/8. The music features a melodic line of eighth notes with slurs and ties, and a bass line of sustained octaves marked with '8'. Measure 101 ends with a double bar line.

Andr - Thank You For Being A Friend

Staff-3

♩ = 117,000114

7

13

20 **15**

38

44

50 **49**

Copyright © 1998 by Chris Rada
All Rights Reserved

Andr - Thank You For Being A Friend

Staff-4

♩ = 117,000114

5

9

13

17

21

26

30

34

39

Copyright © 1998 by Chris Rada
All Rights Reserved

V.S.

43

47

51

55

60

64

68

73

77

81

