

Linkin Park - And one

0.0"
1.1,00
1st Verse

♩ = 115,000031

Chester (Lyrics)

Rob Bourdon (Drums)

Brad Delson (Guitar)

Guitar Feedback

Phoenix (Bass)

Detailed description: This system contains the first two measures of the 1st Verse. It features five staves: Chester (Lyrics) in treble clef with a 4/4 time signature; Rob Bourdon (Drums) in drum notation; Brad Delson (Guitar) with a TAB staff and a standard staff; Guitar Feedback with a TAB staff and a standard staff; and Phoenix (Bass) in bass clef. The guitar and feedback staves show a power chord progression (E2-A2-B2) with fret numbers 4, 4, 4, 4, 4. The lyrics staff shows the notes for the first two measures.

♩ = 115,000031

Mike Shinoda (MC)

Mr.Hahn (Sampler)

Detailed description: This system contains the third and fourth measures of the 1st Verse. It features two staves: Mike Shinoda (MC) in treble clef and Mr.Hahn (Sampler) in treble clef. Both staves show rests for the duration of the measures. The tempo marking '♩ = 115,000031' is repeated above the first staff.

Chester (Lyrics)

Brad Delson (Guitar)

Detailed description: This system contains the fifth and sixth measures of the 1st Verse. It features two staves: Chester (Lyrics) in treble clef and Brad Delson (Guitar) with a TAB staff and a standard staff. The guitar staff shows a power chord progression (E2-A2-B2) with fret numbers 4, 4, 4, 4, 4. The lyrics staff shows the notes for the fifth and sixth measures. A double bar line is present at the start of the system.

Chester (Lyrics)

Brad Delson (Guitar)

Detailed description: This system contains the seventh and eighth measures of the 1st Verse. It features two staves: Chester (Lyrics) in treble clef and Brad Delson (Guitar) with a TAB staff and a standard staff. The guitar staff shows a power chord progression (E2-A2-B2) with fret numbers 4, 4, 4, 4, 4. The lyrics staff shows the notes for the seventh and eighth measures. A double bar line is present at the start of the system.

7

Chester (Lyrics)

Rob Bourdon (Drums)

Brad Delson (Guitar)



9

Chester (Lyrics)

Rob Bourdon (Drums)

Brad Delson (Guitar)

Phoenix (Bass)



10

Chester (Lyrics)

Rob Bourdon (Drums)

Brad Delson (Guitar)

Phoenix (Bass)

11

Chester (Lyrics)

Rob Bourdon (Drums)

Brad Delson (Guitar)

Phoenix (Bass)

12

Chester (Lyrics)

Rob Bourdon (Drums)

Brad Delson (Guitar)

Phoenix (Bass)

13

Chester (Lyrics)

Rob Bourdon (Drums)

Brad Delson (Guitar)

Phoenix (Bass)

14

Chester (Lyrics)

Rob Bourdon (Drums)

Brad Delson (Guitar)

Phoenix (Bass)



15

Chester (Lyrics)

Rob Bourdon (Drums)

Brad Delson (Guitar)

Guitar Feedback

Phoenix (Bass)

22

Chester (Lyrics)

Rob Bourdon (Drums)

Brad Delson (Guitar)

Phoenix (Bass)



23

Chester (Lyrics)

Rob Bourdon (Drums)

Brad Delson (Guitar)

Phoenix (Bass)



24

Chester (Lyrics)

Rob Bourdon (Drums)

Brad Delson (Guitar)

Phoenix (Bass)

26

Chester (Lyrics)

Rob Bourdon (Drums)

Brad Delson (Guitar)

Phoenix (Bass)



27

Chester (Lyrics)

Rob Bourdon (Drums)

Brad Delson (Guitar)

Phoenix (Bass)



28

Chester (Lyrics)

Rob Bourdon (Drums)

Brad Delson (Guitar)

Phoenix (Bass)

29

Chester (Lyrics)

Rob Bourdon (Drums)

Brad Delson (Guitar)

Phoenix (Bass)



59.4"
30.1,00
2nd Chorus

30

Chester (Lyrics)

Rob Bourdon (Drums)

Brad Delson (Guitar)

Phoenix (Bass)

Mr.Hahn (Sampler)

32

Chester (Lyrics)

Rob Bourdon (Drums)

Brad Delson (Guitar)

Phoenix (Bass)

Mr.Hahn (Sampler)



34

Chester (Lyrics)

Rob Bourdon (Drums)

Brad Delson (Guitar)

Phoenix (Bass)

Mr.Hahn (Sampler)

36

Chester (Lyrics)

Rob Bourdon (Drums)

Brad Delson (Guitar)

Phoenix (Bass)

Mr.Hahn (Sampler)



1'16.1"
38.1,00
Bridge

38

Chester (Lyrics)

Rob Bourdon (Drums)

Brad Delson (Guitar)

Guitar Feedback

Phoenix (Bass)

Mr.Hahn (Sampler)

41

Rob Bourdon (Drums)

Brad Delson (Guitar)

Guitar Feedback

Phoenix (Bass)

Mr.Hahn (Sampler)



43

Rob Bourdon (Drums)

Brad Delson (Guitar)

Mr.Hahn (Sampler)



45

Chester (Lyrics)

Rob Bourdon (Drums)

Brad Delson (Guitar)

Mr.Hahn (Sampler)

47

Chester (Lyrics)

Rob Bourdon (Drums)

Brad Delson (Guitar)

Mr.Hahn (Sampler)



49

Chester (Lyrics)

Rob Bourdon (Drums)

Brad Delson (Guitar)

Mr.Hahn (Sampler)



51

Chester (Lyrics)

Rob Bourdon (Drums)

Brad Delson (Guitar)

Mr.Hahn (Sampler)

53

Chester (Lyrics)

Rob Bourdon (Drums)

Brad Delson (Guitar)

Mr.Hahn (Sampler)



56

Rob Bourdon (Drums)

Brad Delson (Guitar)

Mike Shinoda (MC)

Mr.Hahn (Sampler)



58

Rob Bourdon (Drums)

Brad Delson (Guitar)

Mike Shinoda (MC)

63

Chester (Lyrics)

Rob Bourdon (Drums)

Brad Delson (Guitar)

Phoenix (Bass)

Mike Shinoda (MC)

64

Chester (Lyrics)

Rob Bourdon (Drums)

Brad Delson (Guitar)

Phoenix (Bass)

Mike Shinoda (MC)

2'11.4"
65.1,00
3rd Chorus

65

Chester (Lyrics)

Rob Bourdon (Drums)

Brad Delson (Guitar)

Phoenix (Bass)

Mr.Hahn (Sampler)



66

Chester (Lyrics)

Rob Bourdon (Drums)

Brad Delson (Guitar)

Phoenix (Bass)

Mr.Hahn (Sampler)

72

Chester (Lyrics)

Rob Bourdon (Drums)

Brad Delson (Guitar)

Phoenix (Bass)

Mike Shinoda (MC)

Mr.Hahn (Sampler)



74

Chester (Lyrics)

Rob Bourdon (Drums)

Brad Delson (Guitar)

Phoenix (Bass)

Mike Shinoda (MC)

75

Chester (Lyrics)

Rob Bourdon (Drums)

Brad Delson (Guitar)

Phoenix (Bass)

Mike Shinoda (MC)



76

Chester (Lyrics)

Rob Bourdon (Drums)

Brad Delson (Guitar)

Phoenix (Bass)

Mike Shinoda (MC)

77

Chester (Lyrics)

Rob Bourdon (Drums)

Brad Delson (Guitar)

Phoenix (Bass)

Mike Shinoda (MC)



78

Chester (Lyrics)

Rob Bourdon (Drums)

Brad Delson (Guitar)

Phoenix (Bass)

Mike Shinoda (MC)

79

Chester (Lyrics)

Rob Bourdon (Drums)

Brad Delson (Guitar)

Phoenix (Bass)

Mike Shinoda (MC)



80

Chester (Lyrics)

Rob Bourdon (Drums)

Brad Delson (Guitar)

Phoenix (Bass)

Mike Shinoda (MC)

81

Chester (Lyrics)

Rob Bourdon (Drums)

Brad Delson (Guitar)

Phoenix (Bass)

Mr.Hahn (Sampler)



82

Chester (Lyrics)

Rob Bourdon (Drums)

Brad Delson (Guitar)

Phoenix (Bass)

Mr.Hahn (Sampler)

83

Chester (Lyrics)

Rob Bourdon (Drums)

Brad Delson (Guitar)

Phoenix (Bass)

Mr.Hahn (Sampler)



84

Chester (Lyrics)

Rob Bourdon (Drums)

Brad Delson (Guitar)

Phoenix (Bass)

Mr.Hahn (Sampler)

85

Chester (Lyrics)

Rob Bourdon (Drums)

Brad Delson (Guitar)

Phoenix (Bass)

Mr.Hahn (Sampler)



86

Chester (Lyrics)

Rob Bourdon (Drums)

Brad Delson (Guitar)

Phoenix (Bass)

Mr.Hahn (Sampler)

87

Chester (Lyrics)

Rob Bourdon (Drums)

Brad Delson (Guitar)

Phoenix (Bass)

Mr.Hahn (Sampler)



88

Chester (Lyrics)

Rob Bourdon (Drums)

Brad Delson (Guitar)

Phoenix (Bass)

Mr.Hahn (Sampler)

Linkin Park - And one

Chester (Lyrics)

♩ = 115,000031

6

11

16

21

27

32

38

49

52

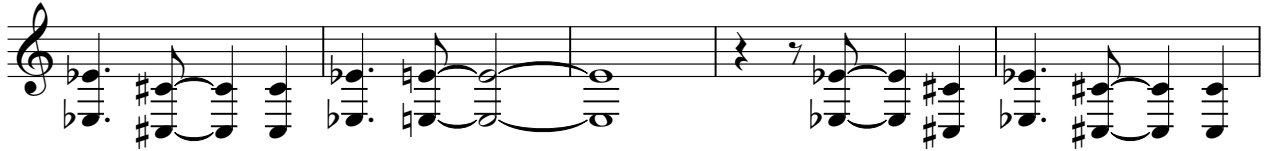
7

5

61



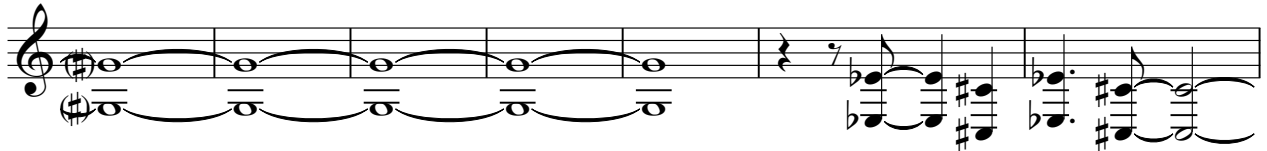
66



71



76



83



86



Rob Bourdon (Drums)

Linkin Park - And one

♩ = 115,000031

7

10

13

16

19

22

25

28

31

34

V.S.

Rob Bourdon (Drums)

37

41

45

49

54

58

61

63

66

69

72

Musical notation for measure 72, featuring a drum staff with a double bar line. The notation includes eighth notes, quarter notes, and rests, with some notes beamed together.

77

Musical notation for measure 77, featuring a drum staff with a double bar line. The notation includes eighth notes, quarter notes, and rests, with some notes beamed together.

80

Musical notation for measure 80, featuring a drum staff with a double bar line. The notation includes eighth notes, quarter notes, and rests, with some notes beamed together.

82

Musical notation for measure 82, featuring a drum staff with a double bar line. The notation includes eighth notes, quarter notes, and rests, with some notes beamed together.

84

Musical notation for measure 84, featuring a drum staff with a double bar line. The notation includes eighth notes, quarter notes, and rests, with some notes beamed together.

86

Musical notation for measure 86, featuring a drum staff with a double bar line. The notation includes eighth notes, quarter notes, and rests, with some notes beamed together.

88

Musical notation for measure 88, featuring a drum staff with a double bar line. The notation includes eighth notes, quarter notes, and rests, with some notes beamed together.

Linkin Park - And one

Brad Delson (Guitar)

♩ = 115,000031

4

4 4

2 2

0 0 0 0 0 0

0 0 0 0 0 0

0 0 0 0 0 0

4 4 4 4 4

4 4 4 4 4

4 4 4 4 4

4

2 2

4 4

0 0 0 0 0 0

0 0 0 0 0 0

0 0 0 0 0 0

4 4 4 4 4

4 4 4 4 4

4 4 4 4 4

2

4 4

2 2

0 0 0 0 0 0

0 0 0 0 0 0

0 0 0 0 0 0

4 4 4 4 4

4 4 4 4 4

4 4 4 4 4

4

2 2

4 4

0 0 0 0 0 0

0 0 0 0 0 0

0 0 0 0 0 0

4 4 4 4 4

4 4 4 4 4

4 4 4 4 4

4 4

2 2

4 4

0 0 0 0 0 0

0 0 0 0 0 0

0 0 0 0 0 0

4 4 4 4 4

4 4 4 4 4

4 4 4 4 4

4

0 0 0 0 0 0 0

4 4 4 4 4 4 4 4 4 4 4

4 4 4 4 4 4 4 4 4 4 4

4 4 4 4 4 4 4 4 4 4 4

2 2 2 2 2 2 2 2 2 2 2

2 2 2 2 2 2 2 2 2 2 2

0 0 0 0 0 0 0 0 0 0 0

2 2 2 2 2 2 2 2 2 2 2

2 2 2 2 2 2 2 2 2 2 2

0 0 0 0 0 0 0 0 0 0 0

0 0 0 0 0 0 0 0 0 0 0

0 0 0 0 0 0 0 0 0 0 0

4 4 4 4 4 4 4 4 4 4 4

4 5 5 5 5 5 5 5 5

4 4 4 4 4 4

4

2 2

4 4

0 0 0 0 0 0

0 0 0 0 0 0

0 0 0 0 0 0

4 4 4 4 4

4 4 4 4 4

4 4 4 4 4

9

9

4 4

0 0 0 0 0 0

0 0 0 0 0 0

4 4 4 4 4

4 4 4 4 4

2

2 2

0 0 0 0 0 0

0 0 0 0 0 0 0

4 4 4 4 4 4 4 4 4 4 4

4 4 4 4 4 4 4 4 4 4 4

4 4 4 4 4 4 4 4 4 4 4

V.S.

Linkin Park - And one

Guitar Feedback

♩ = 115,000031

14 **9** **8**

E
B
T
A
D
B
A
E
A

26

12

T
A
B

42

18 **29**

T
A
B

Linkin Park - And one

Phoenix (Bass)

♩ = 115,000031
8



11



13



15



18



21



23



26

28

31

34

37

60

63

66

69

72

76



79



81



83



85



87



♩ = 115,000031

24 30

57

60

63

8

73

75

77

79

9

♩ = 115,000031

16

19

26

32

35

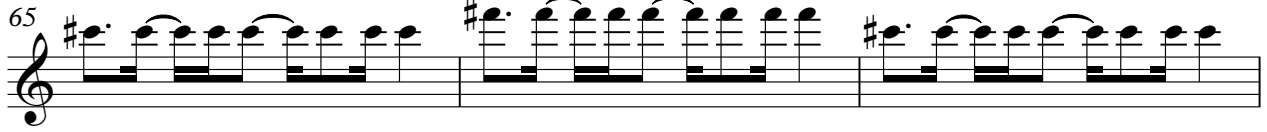
39

47

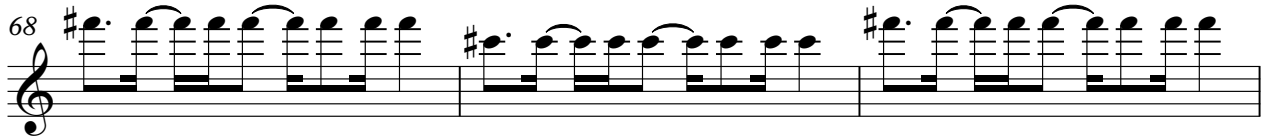
53

Mr.Hahn (Sampler)

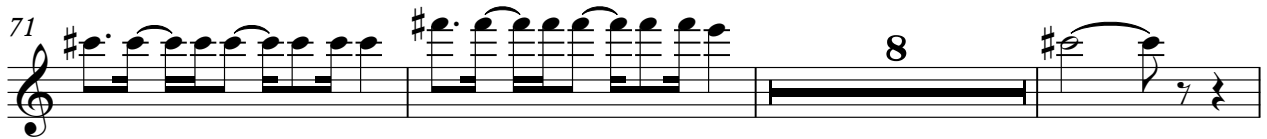
65



68



71



82



86

