

Anita Meijer - Het Spijt Me 2

♩ = 69,000412

OBOE

HARP

MELODY

TIMPANI

DRUMS

HARP

CLEAN GTR

OVERDRIVE

FINGERDBAS

♩ = 69,000412

REVERSCYMB

PIZZICATO

BRASS 1

STRINGS

A.PIANO 2

MELODY

CLEAN GTR

FINGERDBAS

STRINGS

A.PIANO 2

17

OBOE

MELODY

CLEAN GTR

FINGERDBAS

STRINGS

A.PIANO 2

23

OBOE

MELODY

CLEAN GTR

FINGERDBAS

STRINGS

A.PIANO 2

29

OBOE

MELODY

DRUMS

CLEAN GTR

FINGERDBAS

REVERSCYMB

STRINGS

A.PIANO 2

Detailed description: This is a page of a musical score for a film score. It features multiple staves for different instruments. The score is divided into three systems. The first system (measures 17-22) includes Oboe, Melody, Clean Guitar, Fingerboard Bass, Strings, and A. Piano 2. The second system (measures 23-28) includes Oboe, Melody, Clean Guitar, Fingerboard Bass, Strings, and A. Piano 2. The third system (measures 29-34) includes Oboe, Melody, Drums, Clean Guitar, Fingerboard Bass, Reverscymb, Strings, and A. Piano 2. The music is written in a key with one sharp (F#) and a 4/4 time signature. The Oboe part has a melodic line with many slurs and ties. The Melody part is a bass line with many slurs and ties. The Clean Guitar part has a rhythmic pattern with many slurs and ties. The Fingerboard Bass part has a rhythmic pattern with many slurs and ties. The Strings part has a rhythmic pattern with many slurs and ties. The A. Piano 2 part has a rhythmic pattern with many slurs and ties. The Drums part has a simple rhythmic pattern. The Reverscymb part has a rhythmic pattern with many slurs and ties. The A. Piano 2 part has a rhythmic pattern with many slurs and ties.

35

OBOE
MELODY
HARP
CLEAN GTR
OVERDRIVE
FINGERDBAS
STRINGS
A.PIANO 2

Detailed description: This musical score block covers measures 35 through 41. It features seven staves. The OBOE staff (top) has a treble clef and contains a melodic line with various ornaments and slurs. The MELODY staff (second) has a bass clef and contains a bass line with similar ornaments. The HARP staff (third) has a treble clef and contains sustained chords. The CLEAN GTR staff (fourth) has a treble clef and contains a series of chords. The OVERDRIVE staff (fifth) has a treble clef and contains a series of chords. The FINGERDBAS staff (sixth) has a bass clef and contains a complex bass line with many notes and slurs. The STRINGS staff (seventh) has a bass clef and contains sustained chords. The A.PIANO 2 staff (eighth) has a treble clef and contains a melodic line with ornaments and slurs.



42

HARP
MELODY
TIMPANI
DRUMS
HARP
OVERDRIVE
FINGERDBAS
PIZZICATO
STRINGS
A.PIANO 2

Detailed description: This musical score block covers measures 42 through 48. It features nine staves. The HARP staff (top) has a treble clef and contains sustained chords. The MELODY staff (second) has a bass clef and contains a melodic line with ornaments and slurs. The TIMPANI staff (third) has a bass clef and contains a series of notes with slurs. The DRUMS staff (fourth) has a drum clef and contains a series of notes with slurs. The HARP staff (fifth) has a treble clef and contains sustained chords. The OVERDRIVE staff (sixth) has a treble clef and contains a series of chords. The FINGERDBAS staff (seventh) has a bass clef and contains a series of notes with slurs. The PIZZICATO staff (eighth) has a treble clef and contains a series of notes with slurs. The STRINGS staff (ninth) has a bass clef and contains sustained chords. The A.PIANO 2 staff (tenth) has a treble clef and contains a series of notes with slurs.

48

OBOE

HARP

MELODY

TIMPANI

OVERDRIVE

FINGERDBAS

PIZZICATO

STRINGS

A.PIANO 2



53

OBOE

HARP

MELODY

TIMPANI

DRUMS

FINGERDBAS

REVERSCYMB

PIZZICATO

STRINGS

A.PIANO 2

59

HARP

MELODY

TIMPANI

DRUMS

HARP

FINGERBAS

REVERSCYMB

PIZZICATO

BRASS 1

STRINGS

A.PIANO 2

65

OBOE

HARP

MELODY

TIMPANI

DRUMS

FINGERBAS

BRASS 1

STRINGS

A.PIANO 2

72

OBOE

HARP

MELODY

TIMPANI

DRUMS

HARP

FINGERDBAS

REVERSCYMB

BRASS 1

STRINGS

A.PIANO 2

Detailed description: This is a page of a musical score, page 6, starting at measure 72. The score is arranged in a vertical staff system. The instruments and parts from top to bottom are: OBOE (treble clef), HARP (treble clef), MELODY (bass clef), TIMPANI (bass clef), DRUMS (percussion clef), HARP (treble clef), FINGERDBAS (bass clef), REVERSCYMB (treble clef), BRASS 1 (treble clef), STRINGS (bass clef), and A.PIANO 2 (treble clef). The OBOE part has a few notes in the first measure and then rests. The HARP parts have melodic lines. The MELODY part has a complex bass line with many sixteenth notes. The TIMPANI part has a rhythmic pattern starting in measure 72, including sixteenth-note runs marked with a '6'. The DRUMS part has a single cymbal hit in measure 72. The second HARP part has a sixteenth-note run at the end of the page, also marked with a '6'. The FINGERDBAS part has a melodic line. The REVERSCYMB part has a rhythmic pattern. The BRASS 1 part has a melodic line. The STRINGS part has a sustained chord. The A.PIANO 2 part has a complex accompaniment with many sixteenth notes.

78

HARP

MELODY

TIMPANI

DRUMS

HARP

FINGERDBAS

REVERSCYMB

BRASS 1

STRINGS

A.PIANO 2

84

OBOE

HARP

MELODY

TIMPANI

DRUMS

CLEAN GTR

FINGERDBAS

BRASS 1

STRINGS

A.PIANO 2

90

OBOE

HARP

MELODY

TIMPANI

HARP

CLEAN GTR

OVERDRIVE

FINGERDBAS

REVERSCYMB

BRASS 1

STRINGS

A.PIANO 2

Detailed description: This is a page of a musical score, page 8, starting at measure 90. The score is arranged in a vertical stack of staves. From top to bottom, the staves are: OBOE (treble clef), HARP (treble clef), MELODY (bass clef), TIMPANI (bass clef), HARP (grand staff), CLEAN GTR (treble clef), OVERDRIVE (treble clef), FINGERDBAS (bass clef), REVERSCYMB (treble clef), BRASS 1 (treble clef), STRINGS (bass clef), and A.PIANO 2 (grand staff). The OBOE and HARP parts feature melodic lines with some sustained notes. The MELODY part has a more rhythmic, eighth-note pattern. The TIMPANI part shows a drum pattern with sixteenth notes and some rests. The HARP part has a grand staff with some chords and a triplet. The CLEAN GTR part has a melodic line with some bends. The OVERDRIVE part has a melodic line with triplets and sixteenth notes. The FINGERDBAS part has a bass line with some sustained notes. The REVERSCYMB part has a simple rhythmic pattern. The BRASS 1 part has a melodic line with some sustained notes. The STRINGS part has a bass line with some sustained notes. The A.PIANO 2 part has a complex melodic line with many notes and some bends.

96

HARP

TIMPANI

DRUMS

HARP

OVERDRIVE

FINGERDBAS

BRASS 1

STRINGS

A.PIANO 2



103

OBOE

HARP

MELODY

TIMPANI

DRUMS

CLEAN GTR

OVERDRIVE

FINGERDBAS

BRASS 1

STRINGS

A.PIANO 2

110

OBOE

HARP

MELODY

DRUMS

CLEAN GTR

FINGERDBAS

BRASS 1

STRINGS

A.PIANO 2

Detailed description: This page of a musical score, numbered 110, features nine staves. The OBOE and HARP staves show a long, sustained note in the first measure, followed by rests. The MELODY staff (bass clef) begins with a long note, then has a rest, followed by a triplet of eighth notes and another rest. The DRUMS staff shows a snare drum hit in the first measure. The CLEAN GTR staff (treble clef) has a melodic line in the first measure and a sustained chord in the second. The FINGERDBAS staff (bass clef) has a long, sustained note. The BRASS 1 staff (treble clef) has a melodic line in the first measure. The STRINGS staff (bass clef) has a long, sustained note. The A.PIANO 2 staff (treble clef) has a melodic line in the first measure and a sustained chord in the second.

114

OBOE

HARP

MELODY

DRUMS

HARP

CLEAN GTR

OVERDRIVE

FINGERDBAS

REVERSCYMB

PIZZICATO

BRASS 1

STRINGS

A.PIANO 2

Detailed description: This is a page of a musical score, page 11, starting at measure 114. The score is arranged in a vertical stack of staves. From top to bottom, the staves are: OBOE (treble clef), HARP (treble clef), MELODY (bass clef), DRUMS (percussion clef), HARP (treble clef), CLEAN GTR (treble clef), OVERDRIVE (treble clef), FINGERDBAS (bass clef), REVERSCYMB (treble clef), PIZZICATO (treble clef), BRASS 1 (treble clef), STRINGS (bass clef), and A.PIANO 2 (treble clef). The OBOE part has a melodic line starting with a quarter note and followed by a half note. The MELODY part has a few notes in the first measure. The CLEAN GTR part features a triplet of eighth notes in the first measure. The FINGERDBAS part has a long, low note. The BRASS 1 and STRINGS parts have sustained chords. The A.PIANO 2 part has a complex rhythmic pattern with triplets.

OBOE

Anita Meijer - Het Spijt Me 2

♩ = 69,000412

16 3

26

37 10

54 16 15

90 14

111 2 3

HARP

Anita Meijer - Het Spijt Me 2

♩ = 69,000412

44

51

60

71

82

94

105

2

7

3

Anita Meijer - Het Spijt Me 2

MELODY

♩ = 69,000412

7

14

21

28

35

42

4

54

63

71

78

V.S.

2

85

MELODY

92

9

3

107

3

113

2

3

Anita Meijer - Het Spijt Me 2

TIMPANI

♩ = 69,000412

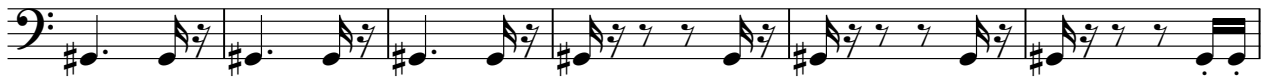
44



49



55



61



66



77



82



94



98



102



DRUMS

Anita Meijer - Het Spijt Me 2

♩ = 69,000412

30 13 7

55

67 7 5

87 7 9

108 5 2 3

HARP

Anita Meijer - Het Spijt Me 2

♩ = 69,000412

36

43

15

6

63

14

6

16

95

22

3

22

3

♩ = 69,000412

3

13

21

29

40 46

92 12

110

115 3 3

Detailed description: This is a guitar score for the song 'Het Spijt Me 2' by Anita Meijer. The score is written in 2/4 time with a tempo of 69,000412. It consists of eight staves of music. The first staff starts with a triplet of eighth notes. The second staff has a measure rest at the beginning. The third staff features a triplet of eighth notes. The fourth staff contains a measure rest. The fifth staff has a measure rest and a triplet of eighth notes. The sixth staff contains a measure rest and a triplet of eighth notes. The seventh staff has a measure rest. The eighth staff contains a measure rest and a triplet of eighth notes. The score uses various chords, including triads and dyads, and includes many rests and slurs.

OVERDRIVE

Anita Meijer - Het Spijt Me 2

♩ = 69,000412

36 **3**

45

46

95

3 **6** **3**

102

3 **11** **3**

♩ = 69,000412

8

18

29

40

50

59

69

78

88

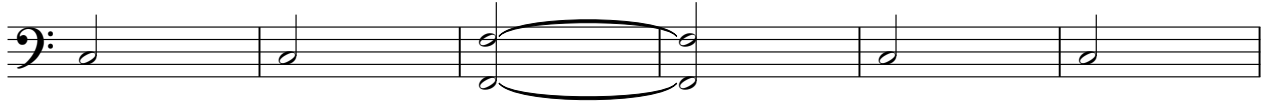
98

V.S.

2

FINGERDBAS

108



114



REVERSCYMB

Anita Meijer - Het Spijt Me 2

♩ = 69,000412

29 20

55

6 13

78

4 11

95

19 5

PIZZICATO

Anita Meijer - Het Spijt Me 2

♩ = 69,000412

44



49



53



58

58

3



BRASS 1

Anita Meijer - Het Spijt Me 2

♩ = 69,000412

60



67

7

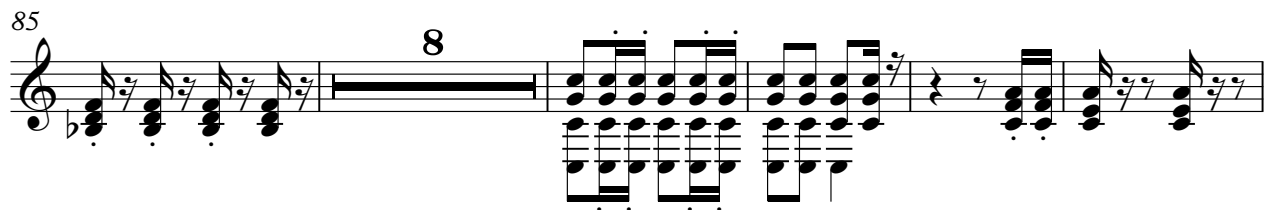


79



85

8



98



104

6

7

3



Anita Meijer - Het Spijt Me 2

STRINGS

♩ = 69,000412

2

9

17

27

37

46

57

67

78

88

V.S.

2
99

STRINGS

109

3

A.PIANO 2

Anita Meijer - Het Spijt Me 2

♩ = 69,000412

2

10

16

21

26

31

35

38

2

Musical score for A.PIANO 2, measures 44-105. The score is written in treble clef with a key signature of one sharp (F#) and a 7/8 time signature. The music features complex rhythmic patterns, including triplets and sixteenth-note runs. Measure 59 contains a triplet of eighth notes. Measure 65 features a long, sweeping melodic line. Measure 71 shows a dense texture with multiple sixteenth-note lines. Measure 77 has a prominent melodic line with a sharp upward inflection. Measure 86 includes a complex rhythmic pattern with many sixteenth notes. Measure 91 features a melodic line with a sharp upward inflection. Measure 98 has a melodic line with a sharp upward inflection. Measure 105 features a melodic line with a sharp upward inflection.

110 A.PIANO 2 3

115