

Anna Deshane - POCKET FULL OF GOLD

♩ = 85,000046

Vocals
Drums
Steel Guitar
Shamisen
Bass
Bass 2
Piano

♩ = 85,000046

Detailed description: This system contains the first five measures of the piece. The tempo is marked as ♩ = 85,000046. The time signature is 3/4. The Vocals part begins with a rest, followed by a melodic line in measures 2-4. The Drums part has a steady rhythm with 'x' marks for cymbals. The Steel Guitar and Shamisen parts play a rhythmic accompaniment of eighth-note chords. The Bass and Bass 2 parts provide a harmonic foundation with sustained notes and chords. The Piano part has a rest in the first measure, followed by a melodic line in measures 2-4.



6

Vocals
Drums
Steel Guitar
Shamisen
Bass
Bass 2
Piano

Detailed description: This system contains measures 6-9. Measure 6 is marked with a '6'. The Vocals part features a triplet in measure 6 and another triplet in measure 9. The Drums part continues with its rhythmic pattern. The Steel Guitar and Shamisen parts play a rhythmic accompaniment of eighth-note chords. The Bass and Bass 2 parts provide a harmonic foundation with sustained notes and chords. The Piano part has a rest in measure 6, followed by a melodic line in measures 7-9, including a triplet in measure 8.

11

Vocals
Drums
Steel Guitar
Shamisen
Bass
Bass 2
Piano

Detailed description: This system of music covers measures 11 through 16. The Vocals part features a melodic line starting with a quarter note, followed by a half note, and then a quarter rest. The Drums part has a consistent pattern of eighth notes with 'x' marks above them, indicating cymbal hits. The Steel Guitar and Shamisen parts play a complex, rhythmic accompaniment with many beamed notes. The Bass and Bass 2 parts provide a steady harmonic foundation with quarter and eighth notes. The Piano part has a sparse accompaniment with a few chords and a melodic line.



17

Vocals
Drums
Steel Guitar
Shamisen
Bass
Bass 2
Backup Vocals
Piano

Detailed description: This system of music covers measures 17 through 22. The Vocals part has a melodic line that includes a half note and a quarter note. The Drums part continues with the same eighth-note pattern. The Steel Guitar and Shamisen parts maintain their complex accompaniment. The Bass and Bass 2 parts continue with their harmonic support. The Backup Vocals part has a melodic line that includes a half note and a quarter note. The Piano part has a sparse accompaniment with a few chords and a melodic line.

23

Vocals

Drums

Steel Guitar

Shamisen

Bass

Bass 2

Backup Vocals

Piano



29

Vocals

Drums

Steel Guitar

Shamisen

Bass

Bass 2

Piano

35

Vocals

Drums

Steel Guitar

Shamisen

Bass

Bass 2

Piano



41

Vocals

Drums

Steel Guitar

Shamisen

Bass

Bass 2

Piano

46

Vocals

Drums

Steel Guitar

Shamisen

Bass

Bass 2

Piano

Detailed description: This system contains measures 46 through 50. The vocal line starts with a rest, followed by a melodic phrase. The drums play a steady eighth-note pattern with occasional cymbal hits. The steel guitar and shamisen play a complex, rhythmic accompaniment with many beamed notes. The bass and bass 2 parts provide a harmonic foundation with various chordal textures. The piano part has sparse accompaniment.



51

Vocals

Drums

Steel Guitar

Shamisen

Bass

Bass 2

Backup Vocals

Piano

Detailed description: This system contains measures 51 through 55. The vocal line continues with a melodic phrase. The drums maintain their eighth-note pattern. The steel guitar and shamisen continue their complex accompaniment. The bass and bass 2 parts provide harmonic support. The backup vocals enter in measure 51 with a melodic line. The piano part has sparse accompaniment.

57

Vocals

Drums

Steel Guitar

Shamisen

Bass

Bass 2

Piano

3

Detailed description: This musical score covers measures 57 to 62. The Vocals part begins with a rest, followed by a melodic line with a triplet of eighth notes at the end. The Drums part features a consistent pattern of eighth notes with 'x' marks above them, indicating cymbal hits. The Steel Guitar and Shamisen parts play a complex, rhythmic accompaniment with many beamed notes. The Bass part has a simple line with a few notes and rests. The Bass 2 part provides a steady accompaniment with chords and single notes. The Piano part has a few chords and a triplet of eighth notes at the end of the section.



63

Vocals

Drums

Steel Guitar

Shamisen

Bass

Bass 2

Piano

3

Detailed description: This musical score covers measures 63 to 68. The Vocals part starts with a melodic line, including a triplet of eighth notes, and ends with a rest. The Drums part continues with the eighth-note pattern, adding some variation in the final measures. The Steel Guitar and Shamisen parts maintain their complex accompaniment. The Bass part has a few notes and rests. The Bass 2 part continues with its accompaniment. The Piano part has a few chords and a triplet of eighth notes at the end of the section.

68

Vocals

Drums

Steel Guitar

Shamisen

Bass

Bass 2



73

Vocals

Drums

Steel Guitar

Shamisen

Bass

Bass 2

Piano

78

Vocals

Drums

Steel Guitar

Shamisen

Bass

Bass 2

Piano



83

Vocals

Drums

Steel Guitar

Shamisen

Bass

Bass 2

Piano

89

Vocals

Drums

Steel Guitar

Shamisen

Bass

Bass 2

Piano



94

Vocals

Drums

Steel Guitar

Shamisen

Bass

Bass 2

Piano

99

Vocals

Drums

Steel Guitar

Shamisen

Bass

Bass 2

Piano



104

$\text{♩} = 73,999985$ $\text{♩} = 62,999996$ $\text{♩} = 55,000026$

Vocals

Drums

Steel Guitar

Shamisen

Bass

Bass 2

Piano

$\text{♩} = 73,999985$ $\text{♩} = 62,999996$ $\text{♩} = 55,000026$

Anna Deshane - POCKET FULL OF GOLD

Vocals

♩ = 85,000046

8

16

26

33

41

49

57

62

67

73

79

86

94

101

106

$\text{♩} = 73,999985 \text{ ♩} = 62,999996 \text{ ♩} = 53,000023 \text{ ♩} = 85,000046$

Anna Deshane - POCKET FULL OF GOLD

Drums

♩ = 85,000046

2

9

16

22

29

36

43

50

56

63

V.S.

69

Musical notation for drum part 69-75. The staff shows a rhythmic pattern of eighth notes with accents (x) and a consistent drum sound.

76

Musical notation for drum part 76-82. The staff shows a rhythmic pattern of eighth notes with accents (x) and a consistent drum sound.

83

Musical notation for drum part 83-89. The staff shows a rhythmic pattern of eighth notes with accents (x) and a consistent drum sound, with some variations in the middle.

90

Musical notation for drum part 90-96. The staff shows a rhythmic pattern of eighth notes with accents (x) and a consistent drum sound.

97

Musical notation for drum part 97-102. The staff shows a rhythmic pattern of eighth notes with accents (x) and a consistent drum sound, with some variations in the middle.

103

♩ = 73,999985 ♩ = 62,999992 ♩ = 85,000046

Musical notation for drum part 103-109. The staff shows a rhythmic pattern of eighth notes with accents (x) and a consistent drum sound, with some variations in the middle.

Anna Deshane - POCKET FULL OF GOLD

Steel Guitar

♩ = 85,000046

3

8

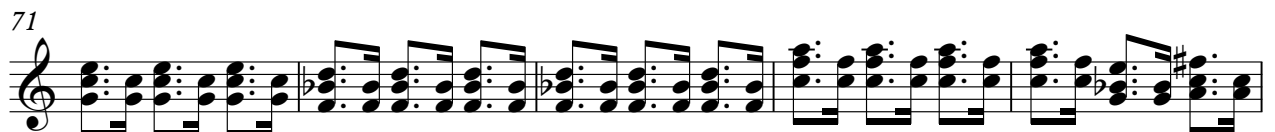
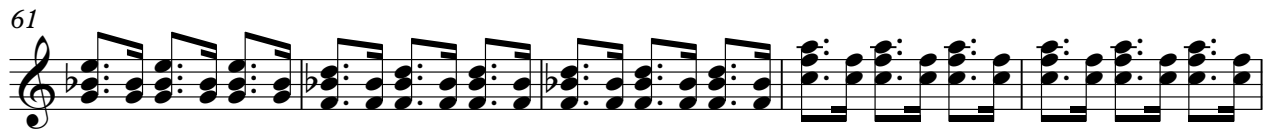
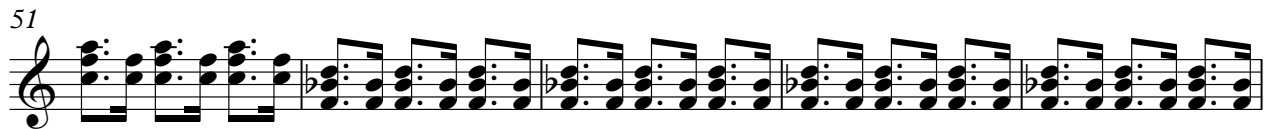
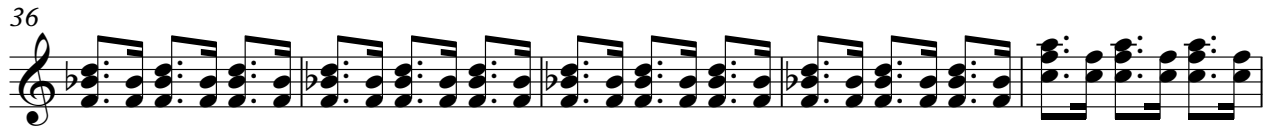
13

18

23

28

32



Anna Deshane - POCKET FULL OF GOLD

Shamisen

♩ = 85,000046

3

8

13

18

23

28

32

Anna Deshane - POCKET FULL OF GOLD

Bass

♩ = 85,000046



V.S.

2

Bass

103

$\text{♩} = 73,999985$ $\text{♩} = 62,999996$ $\text{♩} = 53,85,002046$

Musical notation for Bass, measure 103. The staff shows a sequence of notes: a dotted quarter note, an eighth note triplet, two dotted quarter notes, a quarter note, a dotted quarter note, an eighth note triplet, a quarter note, a dotted quarter note, and a quarter note. A slur covers the last three notes. The piece ends with a double bar line.

Anna Deshane - POCKET FULL OF GOLD

Bass 2

♩ = 85,000046

9

17

25

33

41

49

57

65

72

3

V.S.

2

79 Bass 2

87

95

102

106

♩ = 73,999985 ♩ = 62,999996 ♩ = 53,000023 ♩ = 85,000046

Backup Vocals

Anna Deshane - POCKET FULL OF GOLD

♩ = 85,000046

18

18

25

26

26

56

50

♩ = 73,999985 ♩ = 62,99996 ♩ = 85,000046

56

Anna Deshane - POCKET FULL OF GOLD

Piano

♩ = 85,000046

9

17

27

37

45

56

65

79

86

