

# Annegarn Dick - Mireille

♩ = 115,000031

melodie  
guitare2  
guitare1  
synthe  
piano1

Per mettez vous que j'emprein

Detailed description: This system contains the first three measures of the piece. The tempo is marked as ♩ = 115,000031. The melody (melodie) starts with a whole rest in the first measure, followed by eighth notes in the second and third measures. The guitar parts (guitare1 and guitare2) play chords in the second and third measures. The synth (synthe) and piano1 (piano) parts have whole rests in the first two measures and play chords in the third measure.



4

melodie  
guitare2  
guitare1  
synthe  
piano1  
guitare noise

vo tre o rei lle his toir a vous ra con te l'his toi

Detailed description: This system contains measures 4 through 6. The melody (melodie) begins in measure 4 with a quarter note, followed by eighth notes in measures 5 and 6. The guitar parts (guitare1 and guitare2) play a rhythmic pattern of eighth notes. The synth (synthe) and piano1 (piano) parts play chords. The guitare noise part has a whole rest in measure 4 and a quarter note in measure 6. The lyrics are: 'vo tre o rei lle his toir a vous ra con te l'his toi'.

6

melodie

guitare2

guitare1

synthe

piano1

guitare noise

re de Mirielle Mi reille est au renou che comme



8

melodie

guitare2

guitare1

basse

synthe

piano1

ou tes lenouches le soir e lle seouche a l'aube

10

melodie

guitare2

guitare1

basse

synthe

piano1

elle se reveille

zoum zoum



13

melodie

guitare2

guitare1

guitare noise

zoumzoum

15

melodie

guitare2

guitare1

basse

synthe

piano2

zoumzoum

zoumzoum

Un jour elle attendait dans la cellule



17

melodie

guitare2

guitare1

basse

synthe

piano2

guitare noise

le d'un ca-pale Ray mond e tait son om il ti rait vingt

19

melodie

guitare2

guitare1

basse

synthe

piano1

piano2

guitare noise

ans de pris en vio leur vo leur tu eur Ray mond



21

melodie

guitare2

guitare1

basse

synthe

piano2

a ttend son heure A bru ti par l'en nui la mou

23

melodie

guitare2

guitare1

basse

synthe

piano2

che le suprit

zoumzoumzoum

zoumzoumzoum



00:00:55:03  
26.1.00  
GM sequence Panou Prod.98

26

melodie

guitare2

guitare1

guitare noise

zoumzoumzoum

zoumzoumzoum

28

melodie

guitare2

guitare1

basse

synthe

piano1

piano2

zoumzoum

Ray mond bonjour la mu che Mi reille



30

melodie

guitare2

guitare1

basse

synthe

piano1

guitare noise

bon jour Raymond, so yons de bons a mi des a

32

melodie

guitare2

guitare1

basse

synthe

piano1

guitare noise

misou de bon La brute a ppri voisee pa ssant rou



34

melodie

guitare2

guitare1

basse

synthe

piano1

te sa jou rnee a jouer a vec Mreille ponne conduite



36

melodie

guitare2 *est li-be re* **3** *ZOUZOUZO UZOUZOU*

guitare1

basse

synthe

piano1



38

melodie

guitare2 *zoum zoumzoumzoum zoumzoum zoumzoum zoumzoumzoumzoum*

guitare1

guitare noise



40

melodie

guitare2 *zoum zozoum* **3** *zoumzoum* **3** *zoumzoum* **3** *zoumzoum* **3** *Qu'est*

guitare1

42

melodie

ce qu'on ne peut pas faire quand on sort de prison Dansne

guitare2

guitare1

basse

synthe

piano1

piano2

guitare noise



44

melodie

po che une mou che dans l'au tre que qu'on Si

guitare2

guitare1

basse

piano1

guitare noise

46

melodie

je m'faisais de <sup>3</sup>meur de pucelle ca; fards; et d'a beilles, je se

guitare2

guitare1

basse

synthe

piano1



48

melodie

raismana <sup>3</sup>ser libet scene serai mille zoi <sup>3</sup>zoi

guitare2

guitare1

basse

synthe

piano1

51

melodie

guitare2

guitare1

guitare noise

zoum zoum zoum zoum zoum zoum zoum zoum zoum zoum zoum



53

melodie

guitare2

guitare1

zoum zoum zoum zoum zoum zoum zoum zoum zoum Vo

55

melodie

yons ce que ca do nne Vo yons si tu e tonnes les cli

guitare2

guitare1

basse

synthe

piano1

piano2

guitare noise

Detailed description of the musical score: The score is for a song, page 13, starting at measure 55. It consists of several staves: 'melodie' (vocal line) with lyrics 'yons ce que ca do nne Vo yons si tu e tonnes les cli'; 'guitare2' and 'guitare1' (two guitar parts); 'basse' (bass line); 'synthe' (synthesizer part); 'piano1' (piano part); 'piano2' (piano part); and 'guitare noise' (guitar noise part). The melody is in a key with one sharp (F#) and a 4/4 time signature. The lyrics are 'yons ce que ca do nne Vo yons si tu e tonnes les cli'. The melody features a triplet of eighth notes on 'ce que ca'. The guitar parts are in a similar key and time signature. The bass line is in a lower register. The synthesizer part has a few notes. The piano parts are in a similar key and time signature. The guitar noise part has some noise symbols.

57

melodie

guitare2

guitare1

basse

synthe

piano1

guitare noise

ents de ce bis t... Mireille va faire ton numéro



59

melodie

guitare2

guitare1

basse

synthe

piano1

Tiensu ne mou che, par don dit le gar con et d'un

61  $\text{♩} = 80,999969$   $\text{♩} = 8,999915$   
 $\text{♩} = 18,999924$

melodie

pou ce fa rou che... zoum <sup>3</sup> zoum

guitare2

guitare1

guitare noise

64  $\text{♩} = 78,999977$   $\text{♩} = 98,999977$   $\text{♩} = 100,000076$   $\text{♩} = 45,999900$

melodie

zoum zoum zoum zoum zoum zoum zoum zoum zoum zoum zoum zoum

guitare2

guitare1

guitare noise

66

melodie

zoum zoum zoum zoum

guitare2

guitare1

67

melodie

zoum zoum... <Mi reille...>

guitare2

guitare1





31  
yonsdebons a mis des a misoudebon La bruteapprivosee passant tou

34  
te sajournee a jouer a vec Meille poucaute est li bere

37  
3 zouzouzuuoum zouzouzuuoum zouzouzuuoum zouzouzuuoum

40  
zouzouzuuoum zouzouzuuoum Qu'est ce qu'prebienfai re quandn

43  
sortepri son Danse poheme mou che dankau trequerends Si

46  
jemfaispour dpucde ca fards d'ailles, je se raisma na ger labetercene

49  
se raitMeille zouzouzuuoum zouzouzuuoum

52  
zouzouzuuoum zouzouzuuoum zouzouzuuoum zouzouzuuoum Vo

55  
3 yons cequeca do nne Vons situ etonnes lescli entsde ce bistrotMeilleeraire

58  
tonnumero Tiensu ne mou che, par don ditelgarcon etd'un



♩ = 115,000031

2

5

8

12

14

16

19

22

26

28

V.S.

Musical score for guitar 2, measures 31-57. The score is written in treble clef with a key signature of one sharp (F#) and a 7/8 time signature. The music features a complex rhythmic pattern with many eighth and sixteenth notes, often beamed together. There are several triplet markings (indicated by a '3' above the notes) and various accidentals (sharps and naturals). The score is divided into systems, with measure numbers 31, 34, 38, 40, 42, 45, 48, 52, 54, and 57 marking the beginning of each system.



♩ = 115,000031

2

5

8

12

14

16

19

22

26

28

V.S.

Detailed description: This is a guitar score for the piece 'Annegarn Dick - Mireille'. It consists of ten staves of music in 4/4 time. The tempo is marked as ♩ = 115,000031. The score begins with a double bar line and a '2' above it, indicating a second ending. The music features a variety of rhythmic patterns, including eighth and sixteenth notes, often beamed together. There are several instances of triplets, marked with a '3' above the notes. The key signature changes from one sharp (F#) to two sharps (F# and C#) and back to one sharp. The score includes various articulation marks such as slurs, accents, and breath marks. The piece concludes with a 'V.S.' (Vivace) marking.

Musical score for guitar 1, measures 31 to 57. The score is written in treble clef with a key signature of one sharp (F#). The time signature is 4/4. The music features a complex rhythmic pattern with many sixteenth and thirty-second notes, often beamed together. There are several triplet markings (indicated by a '3' above the notes) at measures 40, 52, and 54. The score is divided into systems, with measure numbers 31, 34, 38, 40, 42, 45, 48, 52, 54, and 57 marking the beginning of each system.

60

guitare1 = 80,999969

3/8 818,998

64

78,50999977 = 93,8000008 = 100,00000076 = 45,000000

66

3



# Annegarn Dick - Mireille

basse

♩ = 115,000031

7 5

16

7 5

23

5 5

33

5 5

42

5 5

50

5 5

59

♩ = 80,999969

2 4

♩ = 80,000031

synthe

Annegarn Dick - Mireille

♩ = 115,000031

9

20

31

36

49

59

♩ = 80,999969    ♩ = 80,000031

piano1

# Annegarn Dick - Mireille

♩ = 115,000031

10

29

33

37

45

50

58

61

♩ = 80,999969    ♩ = 82,999969    ♩ = 83,000000    ♩ = 84,000000    ♩ = 85,000000    ♩ = 85,999990

piano2

# Annegarn Dick - Mireille

♩ = 115,000031

**15**

19

24

**5**                      **13**                      **13**

55

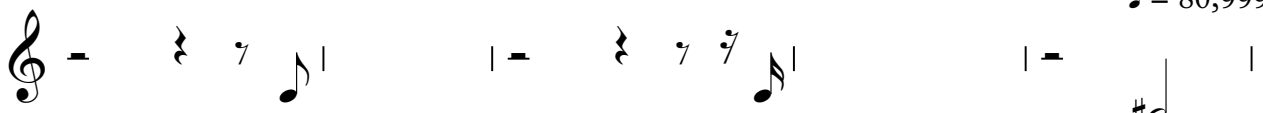
♩ = 80,999969    ♩ = 81,000031    ♩ = 81,000031    ♩ = 81,000031    ♩ = 80,000000

**6**                      **2**                      **4**

♩ = 115,000031



♩ = 80,999969



♩ = 115,000031 7-100,000000

