

Anthony Richard - J'Entends Siffler Le Train 1

♩ = 104,000015

mélodie

Horn in F

Percussion

Jazz Guitar

Electric Guitar

Acoustic Bass

Percussive Organ

FX 5 (Brightness)

♩ = 104,000015

FX 5 (Brightness)

Solo



7

mélodie

Perc.

J. Gtr.

E. Gtr.

A. Bass

Perc. Organ

Solo

12

mélodie

Perc.

J. Gtr.

E. Gtr.

A. Bass

Perc. Organ

Solo



17

mélodie

Perc.

J. Gtr.

E. Gtr.

A. Bass

Perc. Organ

FX 5

FX 5

Solo

22

mélodie

Perc.

E. Gtr.

A. Bass

Perc. Organ

FX 5

FX 5

Solo



27

mélodie

Perc.

J. Gtr.

E. Gtr.

A. Bass

Perc. Organ

Solo

32

mélodie

Perc.

J. Gtr.

E. Gtr.

A. Bass

Perc. Organ

FX 5

FX 5

Solo



37

mélodie

Perc.

E. Gtr.

A. Bass

Perc. Organ

FX 5

FX 5

Solo

42

mélodie

Hn.

Perc.

J. Gtr.

E. Gtr.

A. Bass

Perc. Organ

FX 5

FX 5

Solo



46

mélodie

Hn.

Perc.

J. Gtr.

E. Gtr.

A. Bass

Perc. Organ

Solo

50

mélodie

Hn.

Perc.

J. Gtr.

E. Gtr.

A. Bass

Perc. Organ

FX 5

FX 5

Solo



54

mélodie

Perc.

E. Gtr.

A. Bass

Perc. Organ

FX 5

FX 5

Solo

58

mélodie

Perc.

J. Gtr.

E. Gtr.

A. Bass

Perc. Organ

FX 5

FX 5

Solo



61

mélodie

Perc.

J. Gtr.

E. Gtr.

A. Bass

Perc. Organ

FX 5

FX 5

Solo

64

mélodie

Perc.

J. Gtr.

E. Gtr.

A. Bass

Perc. Organ

FX 5

FX 5

Solo



67

mélodie

Hn.

Perc.

J. Gtr.

E. Gtr.

A. Bass

Perc. Organ

Solo



71

mélodie

Hn.

Perc.

J. Gtr.

E. Gtr.

A. Bass

Perc. Organ

FX 5

FX 5

Solo



75

mélodie

Perc.

E. Gtr.

A. Bass

Perc. Organ

FX 5

FX 5

Solo

78

mélodie

Perc.

E. Gtr.

A. Bass

Perc. Organ

FX 5

FX 5

Solo



81

mélodie

Perc.

E. Gtr.

A. Bass

Perc. Organ

FX 5

FX 5

Solo



# Anthony Richard - J'Entends Siffler Le Train 1

mélodie

♩ = 104,000015

9

14

19

24

29

34

40

45

50

54





# Anthony Richard - J'Entends Siffler Le Train 1

## Percussion

♩ = 104,000015

7

12

16

20

25

29

33

37

42

V.S.

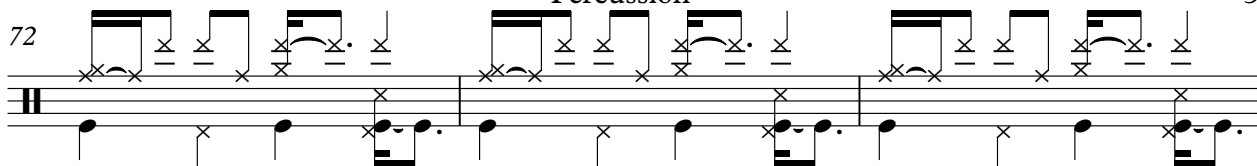
Percussion

The image displays a musical score for a percussion instrument, spanning measures 45 to 69. The score is organized into ten systems, each consisting of two staves. The upper staff of each system contains rhythmic notation, including eighth and sixteenth notes, rests, and various articulation marks such as accents and slurs. The lower staff contains a simplified notation, primarily using 'x' marks to indicate specific rhythmic events or accents. The measures are numbered on the left side of each system: 45, 48, 51, 54, 57, 60, 62, 64, 66, and 69. The notation is consistent throughout, showing a complex, syncopated rhythmic pattern.

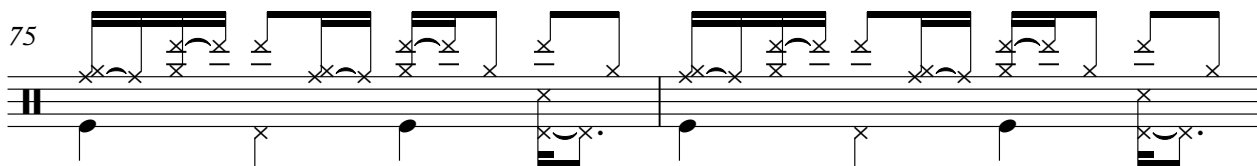


Percussion

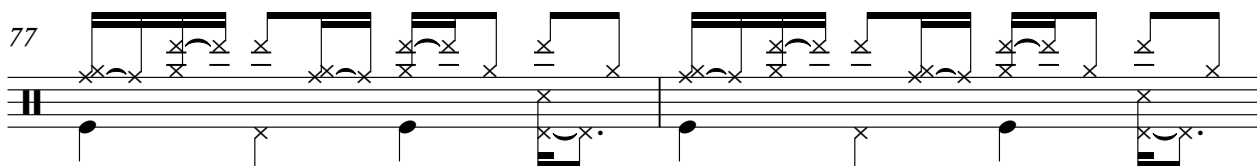
72



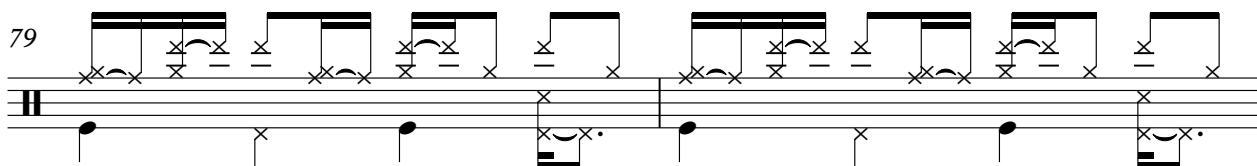
75



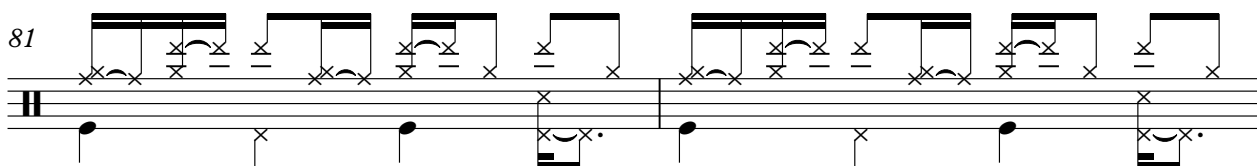
77



79

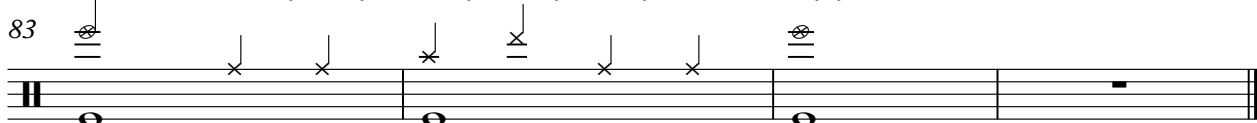


81



♩ = 100, 080, 000, 086, 000, 072, 000, 059, 000, 008 = 56, 0, 000, 019

83



♩ = 104,000015

7

13

18

30

35

47

Detailed description: The image shows a musical score for a jazz guitar piece. It consists of seven staves of music in 4/4 time, with a tempo of 104,000015. The key signature has one sharp (F#). The score includes various musical notations such as slurs, triplets (marked with '3'), and slurs with the number '8' underneath, indicating eighth notes. The melody is written in a treble clef. The first staff starts with a whole rest, followed by a series of eighth and quarter notes. The second staff begins at measure 7 and features a triplet of eighth notes. The third staff starts at measure 13 and includes a triplet of eighth notes. The fourth staff starts at measure 18 and contains a triplet of eighth notes and a slur with an '8' underneath. The fifth staff starts at measure 30 and features a triplet of eighth notes. The sixth staff starts at measure 35 and contains a slur with an '8' underneath. The seventh staff starts at measure 47 and includes a slur with an '8' underneath.

59



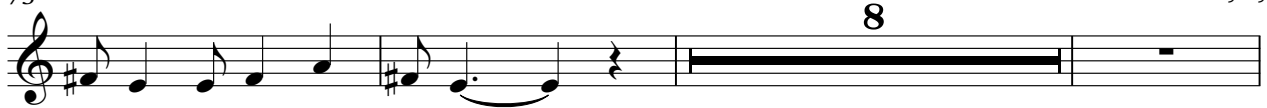
63



67

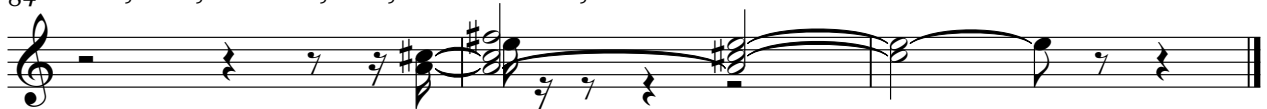


73



♩ = 100800000038

84 ♩ = 80,0002,0000319,000080031 ♩ = 73,000069



Electric Guitar

Anthony Richard - J'Entends Siffler Le Train 1

♩ = 104,000015

2

6

10

14

18

22

26

30

34

38

V.S.





Acoustic Bass

Anthony Richard - J'Entends Siffler Le Train 1

♩ = 104,000015

2

2

Acoustic Bass

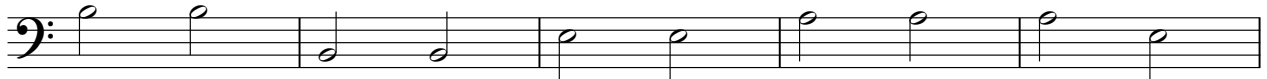
66



72



78



83

$\text{♩} = 100,000,000,038 = 80,000,000,000,0856,000,000,069$





# Anthony Richard - J'Entends Siffler Le Train 1

Percussive Organ

♩ = 104,000015

10

19

28

37

46

55

61

V.S.

2

# Percussive Organ

66

75

81

81

FX 5 (Brightness)

Anthony Richard - J'Entends Siffler Le Train 1

♩ = 104,000015

2 15

21

27 7

38 7

50

56

63 8

76

81

♩ = 109,000000 072,000000 073,000069

FX 5 (Brightness)

Anthony Richard - J'Entends Siffler Le Train 1

♩ = 104,000015

2 15

21

27 7

38 7

50

56

64 8

77

81

♩ = 109,000008 102,000008 113,000069

# Anthony Richard - J'Entends Siffler Le Train 1

Solo

♩ = 104,000015

9

17

26

35

44

53

62

71

79

♩ = 109,000015 113,000015 117,000015 121,000015 125,000015 129,000015 133,000015 137,000015 141,000015 145,000015 149,000015 153,000015 157,000015 161,000015 165,000015 169,000015 173,000069