

Art Of Noise - Moments In Love

♩ = 82,000038

Drums 1

Tubular Bell

SFX4

Guitar 1

Bass 2

Lead Vox

Bass

SFX3

Strings 1

SFX2

Lead Chimes

SFX1

♩ = 82,000038

Lead Cello



10

Tubular Bell

Strings 1

Lead Cello

20 $\text{♩} = 86,000053$

Drums 1

Tubular Bell

Bass

Strings 1

Lead Chimes

Lead Cello $\text{♩} = 86,000053$



24

Drums 1

Bass

Strings 1

Lead Chimes



28

Drums 1

Bass

Strings 1

Lead Chimes

SFX1

32

Drums 1
Bass
Strings 1
Lead Chimes
SFX1

Detailed description: This system covers measures 32 to 35. The Drums 1 part features a consistent, high-tempo rhythmic pattern. The Bass line consists of a simple, steady sequence of notes. The Strings 1 part has a melodic line with a long slur across measures 33 and 34. The Lead Chimes part includes a triplet in measure 35. The SFX1 part has a short, rhythmic burst in measure 33.



36

Drums 1
Bass
Strings 1
Lead Chimes
SFX1
Lead Cello

Detailed description: This system covers measures 36 to 39. The Drums 1 part continues with the same rhythmic pattern. The Bass line remains steady. The Strings 1 part has a melodic line with a long slur across measures 37 and 38. The Lead Chimes part has a melodic line with a slur across measures 37 and 38. The SFX1 part is silent. The Lead Cello part has a simple, steady sequence of notes.



40

Drums 1
Bass
Strings 1
Lead Chimes
Lead Cello

Detailed description: This system covers measures 40 to 43. The Drums 1 part continues with the same rhythmic pattern. The Bass line remains steady. The Strings 1 part has a melodic line with a long slur across measures 41 and 42. The Lead Chimes part has a melodic line with a slur across measures 41 and 42. The Lead Cello part has a simple, steady sequence of notes.

44

Drums 1
Bass
Strings 1
Lead Chimes
SFX1
Lead Cello

This musical score covers measures 44 to 47. It features six staves: Drums 1 (top), Bass, Strings 1, Lead Chimes, SFX1, and Lead Cello (bottom). The Drums 1 staff shows a consistent rhythmic pattern of eighth notes. The Bass staff has a simple line of quarter notes with rests. The Strings 1 staff has a melodic line with a long slur across measures 45 and 46. The Lead Chimes staff has a melodic line with a triplet in measure 47. The SFX1 staff has a complex rhythmic pattern with many sixteenth notes and rests. The Lead Cello staff has a simple line of quarter notes.



48

Drums 1
Bass
Strings 1
Lead Chimes
SFX1
Lead Cello

This musical score covers measures 48 to 51. It features six staves: Drums 1 (top), Bass, Strings 1, Lead Chimes, SFX1, and Lead Cello (bottom). The Drums 1 staff shows a consistent rhythmic pattern of eighth notes. The Bass staff has a simple line of quarter notes with rests. The Strings 1 staff has a melodic line with a long slur across measures 49 and 50. The Lead Chimes staff has a melodic line with a triplet in measure 51. The SFX1 staff has a complex rhythmic pattern with many sixteenth notes and rests. The Lead Cello staff has a simple line of quarter notes.

52

Drums 1

Tubular Bell

SFX4

Guitar 1

Bass 2

Lead Vox

Bass

SFX3

Strings 1

SFX2

Lead Chimes

SFX1

Lead Cello



56

Drums 1

Bass 2

Bass

Strings 1

Lead Chimes

59

Drums 1
Bass 2
Bass
SFX3
Strings 1
Lead Chimes

This musical score covers measures 59 to 61. It features six staves: Drums 1 (top), Bass 2, Bass, SFX3, Strings 1, and Lead Chimes (bottom). The Drums 1 staff shows a complex, rhythmic pattern with many notes. Bass 2 and Bass have sparse, rhythmic accompaniment. SFX3 is mostly silent with a few notes. Strings 1 and Lead Chimes play a melodic line with some sustained notes.



62

Drums 1
SFX4
Bass 2
Lead Vox
Bass
Strings 1
SFX2
Lead Chimes

This musical score covers measures 62 to 64. It features eight staves: Drums 1, SFX4, Bass 2, Lead Vox, Bass, Strings 1, SFX2, and Lead Chimes (bottom). Drums 1 continues with a rhythmic pattern. SFX4 has a complex, multi-measure rest with some notes. Bass 2 and Bass have sparse accompaniment. Lead Vox has a few notes. Strings 1 and SFX2 have some notes. Lead Chimes continues with a melodic line.

64

Drums 1
Bass 2
Lead Vox
Bass
Strings 1
Lead Chimes

This musical score block covers measures 64 to 66. It features six staves: Drums 1 (top), Bass 2, Lead Vox, Bass, Strings 1, and Lead Chimes (bottom). The Drums 1 staff shows a consistent rhythmic pattern of eighth notes. Bass 2 and Bass have a similar rhythmic pattern with some rests. Lead Vox has a melodic line with a long note in measure 65. Strings 1 and Lead Chimes play a steady eighth-note accompaniment. A double bar line is present at the end of measure 66.



67

Drums 1
Bass 2
Lead Vox
Bass
SFX3
Strings 1
Lead Chimes

This musical score block covers measures 67 to 69. It features seven staves: Drums 1, Bass 2, Lead Vox, Bass, SFX3, Strings 1, and Lead Chimes (bottom). The Drums 1 staff continues with the eighth-note pattern. Bass 2 and Bass maintain their rhythmic parts. Lead Vox has a melodic line with a long note in measure 68. SFX3 has a single note in measure 69. Strings 1 and Lead Chimes continue with their accompaniment. A double bar line is present at the end of measure 69.

70

Drums 1

SFX4

Bass 2

Lead Vox

Bass

Strings 1

SFX2

Lead Chimes

Detailed description: This block contains the musical score for measures 70 and 71. It features seven staves: Drums 1 (top), SFX4, Bass 2, Lead Vox, Bass, Strings 1, and SFX2, and Lead Chimes (bottom). Measure 70 includes a drum solo with sixteenth notes, a complex SFX4 line with sixteenth-note runs and sixteenth rests, and a bass line with eighth notes. Measure 71 continues the drum solo and bass line, while the SFX4 part has a more melodic line. The Lead Vox part has a few scattered notes, and the Lead Chimes part has a steady eighth-note pattern.



72

Drums 1

Bass 2

Lead Vox

Bass

Strings 1

SFX2

Lead Chimes

Detailed description: This block contains the musical score for measures 72 and 73. It features six staves: Drums 1, Bass 2, Lead Vox, Bass, Strings 1, and SFX2, and Lead Chimes (bottom). Measure 72 continues the drum solo and bass line. Measure 73 shows the drum solo ending, with the SFX2 part playing a sustained chord. The Lead Vox part has a few scattered notes, and the Lead Chimes part has a steady eighth-note pattern.

74

Drums 1

SFX4

Bass 2

Lead Vox

Bass

Strings 1

SFX2

Lead Chimes

Detailed description: This system of musical notation covers measures 74 and 75. It includes staves for Drums 1, SFX4, Bass 2, Lead Vox, Bass, Strings 1, SFX2, and Lead Chimes. Measure 74 features a complex drum pattern, a sixteenth-note SFX4 line with sixteenth-note groupings marked '6', and a bass line with eighth notes. Measure 75 continues the drum and bass patterns, with the SFX4 staff ending in a rest. The Lead Vox staff shows a few notes in measure 74 and a whole note chord in measure 75. The Strings 1 staff has a whole note chord in measure 74 and a half note chord in measure 75. SFX2 and Lead Chimes have simple rhythmic patterns.



76

Drums 1

Bass 2

Lead Vox

Bass

SFX3

Strings 1

SFX2

Lead Chimes

Detailed description: This system of musical notation covers measures 76 and 77. It includes staves for Drums 1, Bass 2, Lead Vox, Bass, SFX3, Strings 1, SFX2, and Lead Chimes. Measure 76 features a complex drum pattern, a bass line with eighth notes, and a Lead Vox line with a few notes. Measure 77 continues the drum and bass patterns, with the SFX3 staff having a whole note chord. The Strings 1 staff has a whole note chord in measure 76 and a half note chord in measure 77. SFX2 and Lead Chimes have simple rhythmic patterns.

78

Drums 1

SFX4

Guitar 1

Bass 2

Lead Vox

Bass

Strings 1

SFX2

Lead Chimes



80

Drums 1

Guitar 1

Bass 2

Lead Vox

Bass

Strings 1

SFX2

Lead Chimes

82

Drums 1

SFX4

Guitar 1

Bass 2

Lead Vox

Bass

Strings 1

SFX2

Lead Chimes

Detailed description of the musical score for page 11, measures 82-83. The score is arranged in a vertical stack of staves.
 - **Drums 1:** Features a complex, multi-layered drum pattern with various rhythmic figures and accents.
 - **SFX4:** Shows a melodic line in the bass clef with sixteenth-note runs and slurs, including two instances of a sixteenth-note triplet marked with a '6'.
 - **Guitar 1:** Contains a simple, steady eighth-note melody in the treble clef.
 - **Bass 2:** Features a bass line with eighth notes and rests, providing a rhythmic foundation.
 - **Lead Vox:** Displays a sparse vocal melody with a few notes and rests in the treble clef.
 - **Bass:** Shows a bass line with quarter notes and eighth notes in the bass clef.
 - **Strings 1:** Includes a string part with a few notes and rests in the treble clef.
 - **SFX2:** Features a melodic line in the treble clef with notes and rests.
 - **Lead Chimes:** Contains a melodic line in the treble clef with a consistent eighth-note rhythm.

84 85 86 87 88

Drums 1

Tubular Bell

Guitar 1

Bass 2

Lead Vox

Bass

SFX3

Strings 1

SFX2

Lead Chimes

Detailed description: This page of a musical score contains measures 84 through 88. The score is arranged in a vertical stack of staves. At the top, there is a tempo marking of 84 and a key signature of one flat. The instruments and their parts are: Drums 1 (measures 84-85: continuous eighth-note pattern; measures 86-88: rests); Tubular Bell (measures 84-85: rests; measures 86-88: sustained notes); Guitar 1 (measures 84-85: eighth-note pattern; measures 86-88: rests); Bass 2 (measures 84-85: eighth-note pattern; measures 86-88: rests); Lead Vox (measures 84-85: vocal line; measures 86-88: rests); Bass (measures 84-85: eighth-note pattern; measures 86-88: sustained notes); SFX3 (measures 84-85: rests; measures 86-88: sustained notes); Strings 1 (measures 84-85: sustained notes; measures 86-88: rests); SFX2 (measures 84-85: eighth-note pattern; measures 86-88: sustained notes); Lead Chimes (measures 84-85: eighth-note pattern; measures 86-88: rests).

Art Of Noise - Moments In Love

Drums 1

♩ = 82,000038 ♩ = 86,000053

20

23

25

27

29

31

33

35

37

39

V.S.

41

Musical notation for drum part 41, consisting of a single staff with a double bar line on the left. The notation features a series of eighth notes with stems pointing up, grouped in pairs across four measures.

43

Musical notation for drum part 43, consisting of a single staff with a double bar line on the left. The notation features a series of eighth notes with stems pointing up, grouped in pairs across four measures.

45

Musical notation for drum part 45, consisting of a single staff with a double bar line on the left. The notation features a series of eighth notes with stems pointing up, grouped in pairs across four measures.

47

Musical notation for drum part 47, consisting of a single staff with a double bar line on the left. The notation features a series of eighth notes with stems pointing up, grouped in pairs across four measures.

49

Musical notation for drum part 49, consisting of a single staff with a double bar line on the left. The notation features a series of eighth notes with stems pointing up, grouped in pairs across four measures.

51

Musical notation for drum part 51, consisting of a single staff with a double bar line on the left. The notation features a series of eighth notes with stems pointing up, grouped in pairs across four measures, followed by a quarter rest.

54

Musical notation for drum part 54, consisting of a single staff with a double bar line on the left. The notation features a series of eighth notes with stems pointing up, grouped in pairs across four measures. A small graphic of a drum set is positioned above the first measure.

56

Musical notation for drum part 56, consisting of a single staff with a double bar line on the left. The notation features a series of eighth notes with stems pointing up, grouped in pairs across four measures.

58

Musical notation for drum part 58, consisting of a single staff with a double bar line on the left. The notation features a series of eighth notes with stems pointing up, grouped in pairs across four measures.

60

Musical notation for drum part 60, consisting of a single staff with a double bar line on the left. The notation features a series of eighth notes with stems pointing up, grouped in pairs across four measures.

62



64



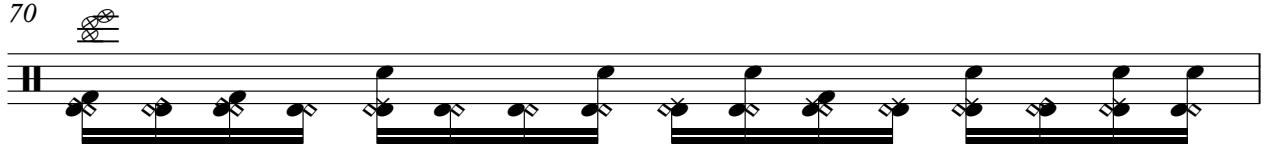
66



68



70



71



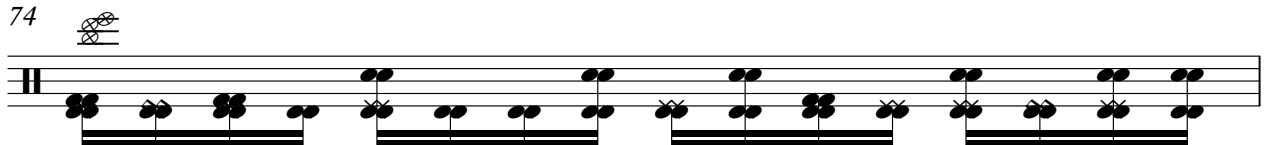
72




73



74



75



V.S.

Tubular Bell

Art Of Noise - Moments In Love

♩ = 82,000038

10

19

♩ = 86,000053

32 **31**

84

♩ = 88,000063

Art Of Noise - Moments In Love

SFX4

♩ = 82,000038 ♩ = 86,000053

20 **32** **9**

62

64

71

75

79

2

SFX4

82

Musical notation for measure 82, featuring a grand staff with treble and bass clefs. The bass line contains sixteenth-note runs with '6' markings. The treble line has a whole rest.

83

Musical notation for measure 83, featuring a bass clef staff. It includes a treble clef staff with a dense sixteenth-note run and a '3' marking. The bass line has a quarter note followed by rests and a triplet of eighth notes.

Art Of Noise - Moments In Love

Guitar 1

♩ = 82,000038 ♩ = 86,000053

20 **32** **25**

78

82

84

Art Of Noise - Moments In Love

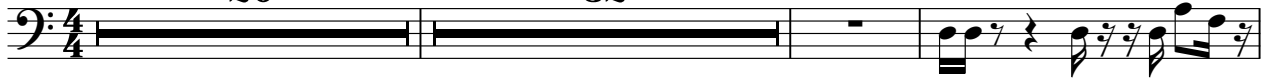
Bass 2

♩ = 82,000038

♩ = 86,000053

20

32



55



58



61



64



67



70



73



76



79



V.S.

2

Bass 2

82



Art Of Noise - Moments In Love

Lead Vox

♪ = 82,000038 ♪ = 86,000053

20 **32** **9**

63

69

76

81

Art Of Noise - Moments In Love

Bass

♩ = 82,000038

♩ = 86,000053

20



25



31



37



43



49



55



60



65



70



V.S.

2

Bass

75



80



84 ~~85~~ ~~86~~ ~~87~~ ~~88~~ ~~89~~ ~~90~~ ~~91~~ ~~92~~ ~~93~~ ~~94~~ ~~95~~ ~~96~~ ~~97~~ ~~98~~ ~~99~~ ~~100~~ ~~101~~ ~~102~~ ~~103~~ ~~104~~ ~~105~~ ~~106~~ ~~107~~ ~~108~~ ~~109~~ ~~110~~ ~~111~~ ~~112~~ ~~113~~ ~~114~~ ~~115~~ ~~116~~ ~~117~~ ~~118~~ ~~119~~ ~~120~~ ~~121~~ ~~122~~ ~~123~~ ~~124~~ ~~125~~ ~~126~~ ~~127~~ ~~128~~ ~~129~~ ~~130~~ ~~131~~ ~~132~~ ~~133~~ ~~134~~ ~~135~~ ~~136~~ ~~137~~ ~~138~~ ~~139~~ ~~140~~ ~~141~~ ~~142~~ ~~143~~ ~~144~~ ~~145~~ ~~146~~ ~~147~~ ~~148~~ ~~149~~ ~~150~~ ~~151~~ ~~152~~ ~~153~~ ~~154~~ ~~155~~ ~~156~~ ~~157~~ ~~158~~ ~~159~~ ~~160~~ ~~161~~ ~~162~~ ~~163~~ ~~164~~ ~~165~~ ~~166~~ ~~167~~ ~~168~~ ~~169~~ ~~170~~ ~~171~~ ~~172~~ ~~173~~ ~~174~~ ~~175~~ ~~176~~ ~~177~~ ~~178~~ ~~179~~ ~~180~~ ~~181~~ ~~182~~ ~~183~~ ~~184~~ ~~185~~ ~~186~~ ~~187~~ ~~188~~ ~~189~~ ~~190~~ ~~191~~ ~~192~~ ~~193~~ ~~194~~ ~~195~~ ~~196~~ ~~197~~ ~~198~~ ~~199~~ ~~200~~ ~~201~~ ~~202~~ ~~203~~ ~~204~~ ~~205~~ ~~206~~ ~~207~~ ~~208~~ ~~209~~ ~~210~~ ~~211~~ ~~212~~ ~~213~~ ~~214~~ ~~215~~ ~~216~~ ~~217~~ ~~218~~ ~~219~~ ~~220~~ ~~221~~ ~~222~~ ~~223~~ ~~224~~ ~~225~~ ~~226~~ ~~227~~ ~~228~~ ~~229~~ ~~230~~ ~~231~~ ~~232~~ ~~233~~ ~~234~~ ~~235~~ ~~236~~ ~~237~~ ~~238~~ ~~239~~ ~~240~~ ~~241~~ ~~242~~ ~~243~~ ~~244~~ ~~245~~ ~~246~~ ~~247~~ ~~248~~ ~~249~~ ~~250~~ ~~251~~ ~~252~~ ~~253~~ ~~254~~ ~~255~~ ~~256~~ ~~257~~ ~~258~~ ~~259~~ ~~260~~ ~~261~~ ~~262~~ ~~263~~ ~~264~~ ~~265~~ ~~266~~ ~~267~~ ~~268~~ ~~269~~ ~~270~~ ~~271~~ ~~272~~ ~~273~~ ~~274~~ ~~275~~ ~~276~~ ~~277~~ ~~278~~ ~~279~~ ~~280~~ ~~281~~ ~~282~~ ~~283~~ ~~284~~ ~~285~~ ~~286~~ ~~287~~ ~~288~~ ~~289~~ ~~290~~ ~~291~~ ~~292~~ ~~293~~ ~~294~~ ~~295~~ ~~296~~ ~~297~~ ~~298~~ ~~299~~ ~~300~~ ~~301~~ ~~302~~ ~~303~~ ~~304~~ ~~305~~ ~~306~~ ~~307~~ ~~308~~ ~~309~~ ~~310~~ ~~311~~ ~~312~~ ~~313~~ ~~314~~ ~~315~~ ~~316~~ ~~317~~ ~~318~~ ~~319~~ ~~320~~ ~~321~~ ~~322~~ ~~323~~ ~~324~~ ~~325~~ ~~326~~ ~~327~~ ~~328~~ ~~329~~ ~~330~~ ~~331~~ ~~332~~ ~~333~~ ~~334~~ ~~335~~ ~~336~~ ~~337~~ ~~338~~ ~~339~~ ~~340~~ ~~341~~ ~~342~~ ~~343~~ ~~344~~ ~~345~~ ~~346~~ ~~347~~ ~~348~~ ~~349~~ ~~350~~ ~~351~~ ~~352~~ ~~353~~ ~~354~~ ~~355~~ ~~356~~ ~~357~~ ~~358~~ ~~359~~ ~~360~~ ~~361~~ ~~362~~ ~~363~~ ~~364~~ ~~365~~ ~~366~~ ~~367~~ ~~368~~ ~~369~~ ~~370~~ ~~371~~ ~~372~~ ~~373~~ ~~374~~ ~~375~~ ~~376~~ ~~377~~ ~~378~~ ~~379~~ ~~380~~ ~~381~~ ~~382~~ ~~383~~ ~~384~~ ~~385~~ ~~386~~ ~~387~~ ~~388~~ ~~389~~ ~~390~~ ~~391~~ ~~392~~ ~~393~~ ~~394~~ ~~395~~ ~~396~~ ~~397~~ ~~398~~ ~~399~~ ~~400~~ ~~401~~ ~~402~~ ~~403~~ ~~404~~ ~~405~~ ~~406~~ ~~407~~ ~~408~~ ~~409~~ ~~410~~ ~~411~~ ~~412~~ ~~413~~ ~~414~~ ~~415~~ ~~416~~ ~~417~~ ~~418~~ ~~419~~ ~~420~~ ~~421~~ ~~422~~ ~~423~~ ~~424~~ ~~425~~ ~~426~~ ~~427~~ ~~428~~ ~~429~~ ~~430~~ ~~431~~ ~~432~~ ~~433~~ ~~434~~ ~~435~~ ~~436~~ ~~437~~ ~~438~~ ~~439~~ ~~440~~ ~~441~~ ~~442~~ ~~443~~ ~~444~~ ~~445~~ ~~446~~ ~~447~~ ~~448~~ ~~449~~ ~~450~~ ~~451~~ ~~452~~ ~~453~~ ~~454~~ ~~455~~ ~~456~~ ~~457~~ ~~458~~ ~~459~~ ~~460~~ ~~461~~ ~~462~~ ~~463~~ ~~464~~ ~~465~~ ~~466~~ ~~467~~ ~~468~~ ~~469~~ ~~470~~ ~~471~~ ~~472~~ ~~473~~ ~~474~~ ~~475~~ ~~476~~ ~~477~~ ~~478~~ ~~479~~ ~~480~~ ~~481~~ ~~482~~ ~~483~~ ~~484~~ ~~485~~ ~~486~~ ~~487~~ ~~488~~ ~~489~~ ~~490~~ ~~491~~ ~~492~~ ~~493~~ ~~494~~ ~~495~~ ~~496~~ ~~497~~ ~~498~~ ~~499~~ ~~500~~ ~~501~~ ~~502~~ ~~503~~ ~~504~~ ~~505~~ ~~506~~ ~~507~~ ~~508~~ ~~509~~ ~~510~~ ~~511~~ ~~512~~ ~~513~~ ~~514~~ ~~515~~ ~~516~~ ~~517~~ ~~518~~ ~~519~~ ~~520~~ ~~521~~ ~~522~~ ~~523~~ ~~524~~ ~~525~~ ~~526~~ ~~527~~ ~~528~~ ~~529~~ ~~530~~ ~~531~~ ~~532~~ ~~533~~ ~~534~~ ~~535~~ ~~536~~ ~~537~~ ~~538~~ ~~539~~ ~~540~~ ~~541~~ ~~542~~ ~~543~~ ~~544~~ ~~545~~ ~~546~~ ~~547~~ ~~548~~ ~~549~~ ~~550~~ ~~551~~ ~~552~~ ~~553~~ ~~554~~ ~~555~~ ~~556~~ ~~557~~ ~~558~~ ~~559~~ ~~560~~ ~~561~~ ~~562~~ ~~563~~ ~~564~~ ~~565~~ ~~566~~ ~~567~~ ~~568~~ ~~569~~ ~~570~~ ~~571~~ ~~572~~ ~~573~~ ~~574~~ ~~575~~ ~~576~~ ~~577~~ ~~578~~ ~~579~~ ~~580~~ ~~581~~ ~~582~~ ~~583~~ ~~584~~ ~~585~~ ~~586~~ ~~587~~ ~~588~~ ~~589~~ ~~590~~ ~~591~~ ~~592~~ ~~593~~ ~~594~~ ~~595~~ ~~596~~ ~~597~~ ~~598~~ ~~599~~ ~~600~~ ~~601~~ ~~602~~ ~~603~~ ~~604~~ ~~605~~ ~~606~~ ~~607~~ ~~608~~ ~~609~~ ~~610~~ ~~611~~ ~~612~~ ~~613~~ ~~614~~ ~~615~~ ~~616~~ ~~617~~ ~~618~~ ~~619~~ ~~620~~ ~~621~~ ~~622~~ ~~623~~ ~~624~~ ~~625~~ ~~626~~ ~~627~~ ~~628~~ ~~629~~ ~~630~~ ~~631~~ ~~632~~ ~~633~~ ~~634~~ ~~635~~ ~~636~~ ~~637~~ ~~638~~ ~~639~~ ~~640~~ ~~641~~ ~~642~~ ~~643~~ ~~644~~ ~~645~~ ~~646~~ ~~647~~ ~~648~~ ~~649~~ ~~650~~ ~~651~~ ~~652~~ ~~653~~ ~~654~~ ~~655~~ ~~656~~ ~~657~~ ~~658~~ ~~659~~ ~~660~~ ~~661~~ ~~662~~ ~~663~~ ~~664~~ ~~665~~ ~~666~~ ~~667~~ ~~668~~ ~~669~~ ~~670~~ ~~671~~ ~~672~~ ~~673~~ ~~674~~ ~~675~~ ~~676~~ ~~677~~ ~~678~~ ~~679~~ ~~680~~ ~~681~~ ~~682~~ ~~683~~ ~~684~~ ~~685~~ ~~686~~ ~~687~~ ~~688~~ ~~689~~ ~~690~~ ~~691~~ ~~692~~ ~~693~~ ~~694~~ ~~695~~ ~~696~~ ~~697~~ ~~698~~ ~~699~~ ~~700~~ ~~701~~ ~~702~~ ~~703~~ ~~704~~ ~~705~~ ~~706~~ ~~707~~ ~~708~~ ~~709~~ ~~710~~ ~~711~~ ~~712~~ ~~713~~ ~~714~~ ~~715~~ ~~716~~ ~~717~~ ~~718~~ ~~719~~ ~~720~~ ~~721~~ ~~722~~ ~~723~~ ~~724~~ ~~725~~ ~~726~~ ~~727~~ ~~728~~ ~~729~~ ~~730~~ ~~731~~ ~~732~~ ~~733~~ ~~734~~ ~~735~~ ~~736~~ ~~737~~ ~~738~~ ~~739~~ ~~740~~ ~~741~~ ~~742~~ ~~743~~ ~~744~~ ~~745~~ ~~746~~ ~~747~~ ~~748~~ ~~749~~ ~~750~~ ~~751~~ ~~752~~ ~~753~~ ~~754~~ ~~755~~ ~~756~~ ~~757~~ ~~758~~ ~~759~~ ~~760~~ ~~761~~ ~~762~~ ~~763~~ ~~764~~ ~~765~~ ~~766~~ ~~767~~ ~~768~~ ~~769~~ ~~770~~ ~~771~~ ~~772~~ ~~773~~ ~~774~~ ~~775~~ ~~776~~ ~~777~~ ~~778~~ ~~779~~ ~~780~~ ~~781~~ ~~782~~ ~~783~~ ~~784~~ ~~785~~ ~~786~~ ~~787~~ ~~788~~ ~~789~~ ~~790~~ ~~791~~ ~~792~~ ~~793~~ ~~794~~ ~~795~~ ~~796~~ ~~797~~ ~~798~~ ~~799~~ ~~800~~ ~~801~~ ~~802~~ ~~803~~ ~~804~~ ~~805~~ ~~806~~ ~~807~~ ~~808~~ ~~809~~ ~~810~~ ~~811~~ ~~812~~ ~~813~~ ~~814~~ ~~815~~ ~~816~~ ~~817~~ ~~818~~ ~~819~~ ~~820~~ ~~821~~ ~~822~~ ~~823~~ ~~824~~ ~~825~~ ~~826~~ ~~827~~ ~~828~~ ~~829~~ ~~830~~ ~~831~~ ~~832~~ ~~833~~ ~~834~~ ~~835~~ ~~836~~ ~~837~~ ~~838~~ ~~839~~ ~~840~~ ~~841~~ ~~842~~ ~~843~~ ~~844~~ ~~845~~ ~~846~~ ~~847~~ ~~848~~ ~~849~~ ~~850~~ ~~851~~ ~~852~~ ~~853~~ ~~854~~ ~~855~~ ~~856~~ ~~857~~ ~~858~~ ~~859~~ ~~860~~ ~~861~~ ~~862~~ ~~863~~ ~~864~~ ~~865~~ ~~866~~ ~~867~~ ~~868~~ ~~869~~ ~~870~~ ~~871~~ ~~872~~ ~~873~~ ~~874~~ ~~875~~ ~~876~~ ~~877~~ ~~878~~ ~~879~~ ~~880~~ ~~881~~ ~~882~~ ~~883~~ ~~884~~ ~~885~~ ~~886~~ ~~887~~ ~~888~~ ~~889~~ ~~890~~ ~~891~~ ~~892~~ ~~893~~ ~~894~~ ~~895~~ ~~896~~ ~~897~~ ~~898~~ ~~899~~ ~~900~~ ~~901~~ ~~902~~ ~~903~~ ~~904~~ ~~905~~ ~~906~~ ~~907~~ ~~908~~ ~~909~~ ~~910~~ ~~911~~ ~~912~~ ~~913~~ ~~914~~ ~~915~~ ~~916~~ ~~917~~ ~~918~~ ~~919~~ ~~920~~ ~~921~~ ~~922~~ ~~923~~ ~~924~~ ~~925~~ ~~926~~ ~~927~~ ~~928~~ ~~929~~ ~~930~~ ~~931~~ ~~932~~ ~~933~~ ~~934~~ ~~935~~ ~~936~~ ~~937~~ ~~938~~ ~~939~~ ~~940~~ ~~941~~ ~~942~~ ~~943~~ ~~944~~ ~~945~~ ~~946~~ ~~947~~ ~~948~~ ~~949~~ ~~950~~ ~~951~~ ~~952~~ ~~953~~ ~~954~~ ~~955~~ ~~956~~ ~~957~~ ~~958~~ ~~959~~ ~~960~~ ~~961~~ ~~962~~ ~~963~~ ~~964~~ ~~965~~ ~~966~~ ~~967~~ ~~968~~ ~~969~~ ~~970~~ ~~971~~ ~~972~~ ~~973~~ ~~974~~ ~~975~~ ~~976~~ ~~977~~ ~~978~~ ~~979~~ ~~980~~ ~~981~~ ~~982~~ ~~983~~ ~~984~~ ~~985~~ ~~986~~ ~~987~~ ~~988~~ ~~989~~ ~~990~~ ~~991~~ ~~992~~ ~~993~~ ~~994~~ ~~995~~ ~~996~~ ~~997~~ ~~998~~ ~~999~~ ~~1000~~



SFX3

Art Of Noise - Moments In Love

♪ = 82,000038 ♪ = 86,000053

20 32 7

61

7 7

78

6 63 2

Art Of Noise - Moments In Love

Strings 1

♩ = 82,000038

9

15

♩ = 86,000053

24

33

42

48

Detailed description: This image shows a musical score for the first string part of the piece 'Art Of Noise - Moments In Love'. The score is written in 4/4 time and consists of seven systems of music, each starting with a measure number. The first system (measures 1-8) begins with a tempo marking of 82,000038. The second system (measures 9-14) continues the piece. The third system (measures 15-23) features a tempo change to 86,000053. The fourth system (measures 24-32) continues the composition. The fifth system (measures 33-41) follows. The sixth system (measures 42-47) continues. The seventh system (measures 48-51) concludes the piece. The notation includes various string techniques such as slurs, ties, and dynamic markings.

Strings 1

54

Musical staff for measure 54, featuring a treble clef and a series of chords and notes.

60

Musical staff for measure 60, featuring a treble clef and a series of chords and notes.

67

Musical staff for measure 67, featuring a treble clef and a series of chords and notes.

73

Musical staff for measure 73, featuring a treble clef and a series of chords and notes.

79

Musical staff for measure 79, featuring a treble clef and a series of chords and notes.

83

Musical staff for measure 83, featuring a treble clef and a series of chords and notes. A thick black bar is present above the staff, and a '3' is written above the final measure.

Art Of Noise - Moments In Love

SFX2

♪ = 82,000038 ♪ = 86,000053

20 32 7

This staff contains measures 20, 32, and 7. Measure 20 is a whole note chord. Measure 32 is a whole note chord. Measure 7 is a whole note chord.

62

7

This staff contains measure 7 in 3/4 time, starting with a whole note chord.

73

This staff contains measures 73-77 in 3/4 time, featuring a sequence of eighth notes and chords.

78

This staff contains measures 78-82 in 3/4 time, featuring a sequence of eighth notes and chords.

83

83 86 2

This staff contains measures 83-86 and measure 2. Measures 83-86 are in 3/4 time, and measure 2 is a whole note chord.

Lead Chimes

Art Of Noise - Moments In Love

♩ = 82,000038 **19** ♩ = 86,000053

24

31

38

45

51

56

60

64

68

V.S.

Lead Chimes

72



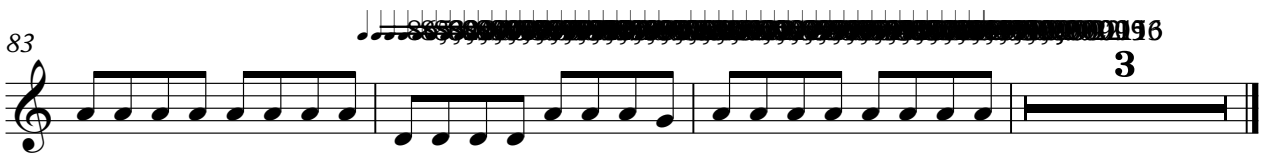
76



80



83



Art Of Noise - Moments In Love

SFX1

♪ = 82,000038 ♪ = 86,000053

20 8

31

35

8

47

51

53

31 3

Lead Cello

Art Of Noise - Moments In Love

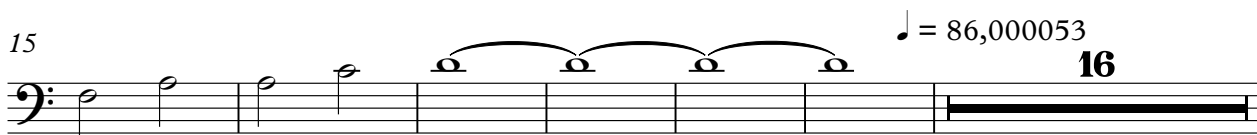
♩ = 82,000038



8



15



37



44



51

