

Atlantic Starr - Always Look On The Bright Side Of Life

♩ = 110,000916

NYLON GTR

MELODY



6

NYLON GTR

MELODY



9

NYLON GTR

MELODY



12

NYLON GTR

MELODY



14

NYLON GTR

MELODY

16

DRUMS

NYLON GTR

ACOU BASS

MELODY



18

WHISTLE

DRUMS

NYLON GTR

ACOU BASS

MELODY

A.PIANO 1



20

DRUMS

NYLON GTR

ACOU BASS

MELODY

22

WHISTLE

DRUMS

NYLON GTR

ACOU BASS

MELODY

A.PIANO 1



24

DRUMS

ACOU BASS

CHOIR AAHS

MELODY

A.PIANO 1

26

DRUMS

ACOU BASS

CHOIR AAHS

MELODY

A.PIANO 1



28

DRUMS

ACOU BASS

CHOIR AAHS

MELODY

A.PIANO 1

30 5

DRUMS

ACOU BASS

CHOIR AAHS

STRINGS

MELODY

A.PIANO 1



32

DRUMS

NYLON GTR

ACOU BASS

CHOIR AAHS

STRINGS

MELODY

34

WHISTLE

DRUMS

NYLON GTR

ACOU BASS

CHOIR AAHS

STRINGS

MELODY

A.PIANO 1



36

DRUMS

NYLON GTR

ACOU BASS

CHOIR AAHS

STRINGS

MELODY

38

WHISTLE

DRUMS

NYLON GTR

ACOU BASS

CHOIR AAHS

STRINGS

MELODY



40

DRUMS

ACOU BASS

CHOIR AAHS

STRINGS

MELODY

A.PIANO 1

42

DRUMS

ACOU BASS

CHOIR AAHS

STRINGS

MELODY

A.PIANO 1

43



44

DRUMS

ACOU BASS

CHOIR AAHS

STRINGS

MELODY

A.PIANO 1

45



46

DRUMS

NYLON GTR

ACOU BASS

CHOIR AAHS

STRINGS

MELODY

A.PIANO 1



49

WHISTLE

DRUMS

NYLON GTR

ACOU BASS

CHOIR AAHS

STRINGS

MELODY

A.PIANO 1

51

WHISTLE

DRUMS

NYLON GTR

ACOU BASS

CHOIR AAHS

STRINGS

MELODY

A.PIANO 1



53

WHISTLE

DRUMS

NYLON GTR

ACOU BASS

CHOIR AAHS

STRINGS

MELODY

55

WHISTLE

DRUMS

NYLON GTR

ACOU BASS

CHOIR AAHS

STRINGS

MELODY

A.PIANO 1



57

DRUMS

ACOU BASS

CHOIR AAHS

STRINGS

MELODY

A.PIANO 1

59

DRUMS

ACOU BASS

CHOIR AAHS

STRINGS

MELODY

A.PIANO 1

Detailed description: This system of musical notation covers measures 59 and 60. The DRUMS part features a consistent rhythmic pattern of eighth notes with 'x' marks above them. The ACOU BASS part has a melodic line with a triplet of eighth notes in measure 59. The CHOIR AAHS part consists of sustained chords. The STRINGS part has a melodic line with a triplet of eighth notes in measure 60. The MELODY part has a long note in measure 59 and a triplet of eighth notes in measure 60. The A.PIANO 1 part features a rhythmic accompaniment of eighth notes with rests.



61

DRUMS

ACOU BASS

CHOIR AAHS

STRINGS

MELODY

A.PIANO 1

Detailed description: This system of musical notation covers measures 61 and 62. The DRUMS part continues with the same rhythmic pattern. The ACOU BASS part has a melodic line with a triplet of eighth notes in measure 61. The CHOIR AAHS part has sustained chords. The STRINGS part has a melodic line with a triplet of eighth notes in measure 61. The MELODY part has a melodic line with eighth notes. The A.PIANO 1 part features a rhythmic accompaniment of eighth notes with rests.

63

DRUMS

NYLON GTR

ACOU BASS

CHOIR AAHS

STRINGS

MELODY

A.PIANO 1



65

DRUMS

NYLON GTR

ACOU BASS

CHOIR AAHS

STRINGS

MELODY

A.PIANO 1

67

DRUMS

NYLON GTR

ACOU BASS

CHOIR AAHS

STRINGS

MELODY

A.PIANO 1



69

DRUMS

NYLON GTR

ACOU BASS

CHOIR AAHS

STRINGS

MELODY

A.PIANO 1

71

DRUMS

NYLON GTR

ACOU BASS

CHOIR AAHS

STRINGS

MELODY

A.PIANO 1



73

WHISTLE

DRUMS

NYLON GTR

ACOU BASS

CHOIR AAHS

STRINGS

MELODY

75

WHISTLE

DRUMS

NYLON GTR

ACOU BASS

CHOIR AAHS

STRINGS

MELODY



77

WHISTLE

DRUMS

NYLON GTR

ACOU BASS

CHOIR AAHS

STRINGS

MELODY



79

WHISTLE

DRUMS

NYLON GTR

ACOU BASS

CHOIR AAHS

STRINGS

MELODY



81

WHISTLE

DRUMS

NYLON GTR

ACOU BASS

CHOIR AAHS

STRINGS

MELODY

83

WHISTLE

DRUMS

NYLON GTR

ACOU BASS

CHOIR AAHS

STRINGS

MELODY



85

WHISTLE

DRUMS

NYLON GTR

ACOU BASS

CHOIR AAHS

STRINGS

MELODY

87

WHISTLE

DRUMS

NYLON GTR

ACOU BASS

CHOIR AAHS

STRINGS

MELODY

A.PIANO 1

WHISTLE

DRUMS

NYLON GTR

ACOU BASS

CHOIR AAHS

STRINGS

MELODY

A.PIANO 1

Detailed description: This is a multi-stem musical score for page 20, starting at measure 89. The score includes parts for Whistle, Drums, Nylon Guitar, Acoustic Bass, Choir Ahhs, Strings, Melody, and Acoustic Piano 1. The Whistle part begins with a rest followed by a melodic line. The Drums part features a complex rhythmic pattern with various drum sounds. The Nylon Guitar part has a melodic line with a triplet. The Acoustic Bass part has a melodic line with a long note. The Choir Ahhs part has a melodic line with a long note. The Strings part has a melodic line with a long note. The Melody part has a melodic line with a long note. The Acoustic Piano 1 part has a melodic line with a long note.

91

WHISTLE

DRUMS

NYLON GTR

ACOU BASS

CHOIR AAHS

STRINGS

MELODY

A.PIANO 1

93

WHISTLE

DRUMS

NYLON GTR

ACOU BASS

CHOIR AAHS

STRINGS

MELODY

A.PIANO 1

Detailed description: This is a multi-staff musical score for a piece starting at measure 93. The score includes parts for Whistle, Drums, Nylon Guitar, Acoustic Bass, Choir Aahs, Strings, Melody, and A. Piano 1. The Whistle part begins with a rest followed by a melodic line. The Drums part features a complex rhythmic pattern with a triplet. The Nylon Guitar part consists of chords and a triplet. The Acoustic Bass part has a melodic line with a triplet. The Choir Aahs part provides harmonic support with sustained chords. The Strings part features sustained chords. The Melody part has a simple melodic line. The A. Piano 1 part has a rhythmic accompaniment with a triplet.

95

WHISTLE

DRUMS

NYLON GTR

ACOU BASS

CHOIR AAHS

STRINGS

MELODY

A.PIANO 1

WHISTLE

DRUMS

NYLON GTR

ACOU BASS

CHOIR AAHS

STRINGS

MELODY

A.PIANO 1

Detailed description: This is a multi-staff musical score for a piece starting at measure 97. The score includes parts for Whistle, Drums, Nylon Guitar, Acoustic Bass, Choir Ahhs, Strings, Melody, and A. Piano 1. The Whistle part begins with a rest followed by a melodic line. The Drums part features a complex rhythmic pattern with various drum sounds. The Nylon Guitar part has a melodic line with a triplet and a key signature of one sharp. The Acoustic Bass part provides a harmonic foundation with sustained notes. The Choir Ahhs part consists of sustained chords. The Strings part has a simple harmonic line. The Melody part has a short melodic phrase. The A. Piano 1 part has a melodic line with a triplet.



99

WHISTLE

DRUMS

NYLON GTR

ACOU BASS

CHOIR AAHS

STRINGS

MELODY

A.PIANO 1

101

WHISTLE

DRUMS

NYLON GTR

ACOU BASS

CHOIR AAHS

STRINGS

MELODY

A.PIANO 1



103

WHISTLE

DRUMS

NYLON GTR

ACOU BASS

STRINGS

MELODY

A.PIANO 1

108

DRUMS



115

DRUMS

Atlantic Starr - Always Look On The Bright Side Of Life

WHISTLE

♩ = 110,000916

17

22

35

40

54

74

79

84

90

94

2

WHISTLE

98

Musical notation for measure 98, featuring a treble clef and a series of notes with accidentals (sharps) and rests. The measure concludes with a double bar line and a fermata. A large number '2' is positioned above the staff on the right side.

102

Musical notation for measure 102, featuring a treble clef and a series of notes with accidentals (sharps) and rests. The measure concludes with a double bar line and a fermata. A large number '18' is positioned above the staff on the right side.

DRUMS

Atlantic Starr - Always Look On The Bright Side Of Life

♩ = 110,000916

15

18

21

24

27

30

33

36

39

42

V.S.

DRUMS

Drum notation for measures 45 through 72. The notation is presented in ten systems, each with a measure number on the left. Each system consists of two staves: the top staff uses 'x' marks to indicate drum hits, and the bottom staff uses standard musical notation for the bass drum. Triplet markings (the number '3' with a bracket) are present in measures 45, 51, 54, 57, 63, 66, 69, and 72, indicating groups of three notes played in a triplet rhythm.

DRUMS

75

78

81

84

87

90

93

96

99

102

The image displays ten staves of drum notation, numbered 75 through 102. Each staff consists of two lines: the top line for the snare drum and the bottom line for the bass drum. The notation includes various rhythmic patterns, such as eighth and sixteenth notes, rests, and triplet markings (indicated by a '3' above a bracket). The patterns are complex and rhythmic, typical of a drum part in a musical score.

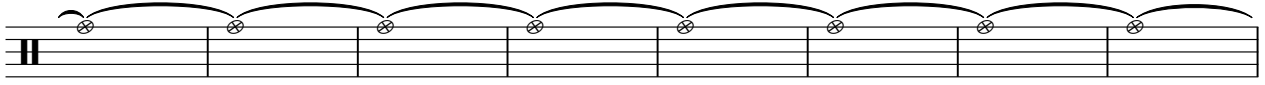
V.S.



4

DRUMS

107



115



♩ = 110,000916

3

6

9

12

14

16

18

20

22

3

8





102

Musical notation for guitar, measures 102-103. The notation is on a single staff in treble clef with a key signature of one sharp (F#). Measure 102 begins with a downbeat chord (F#m), followed by a quarter rest, a quarter chord (F#m), and a quarter chord (F#m). Measure 103 starts with a quarter chord (F#m), followed by a quarter rest, a quarter chord (F#m), a quarter chord (F#m), a quarter chord (F#m), a quarter chord (F#m), a quarter chord (F#m), a quarter chord (F#m), a quarter chord (F#m), a quarter chord (F#m), and a quarter chord (F#m). A triplet of eighth notes is indicated by a bracket and the number '3' under the first three chords of measure 103.

104

Musical notation for guitar, measures 104-105. Measure 104 contains a downbeat chord (F#m), a quarter rest, a quarter chord (F#m), and a quarter chord (F#m). Measure 105 is a whole rest, indicated by a thick black bar across the staff. The number '17' is printed above the staff in measure 105.

ACOU BASS

Atlantic Starr - Always Look On The Bright Side Of Life

♩ = 110,000916

15

19

23

28

32

37

41

46

51

55

V.S.

60



64



69



73



78



82



86



90



94



98

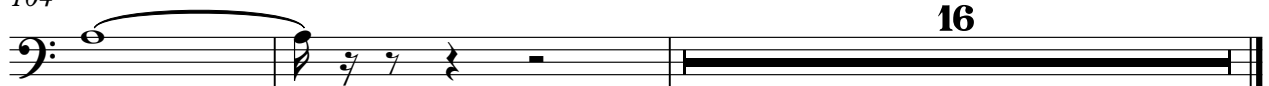


ACOU BASS

102



104



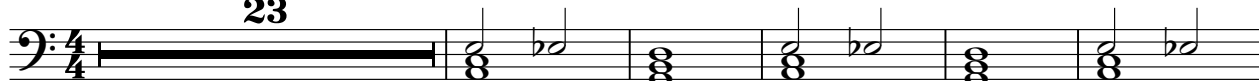


CHOIR AAHS

Atlantic Starr - Always Look On The Bright Side Of Life

♩ = 110,000916

23



29



35



41



48



53



60



66



72



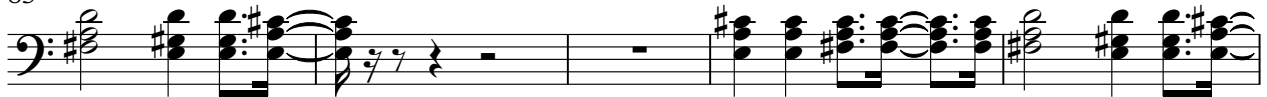
76



80



85



90



95



100



Atlantic Starr - Always Look On The Bright Side Of Life

STRINGS

♩ = 110,000916

30

6

34

40

3

44

3

6

48

54

3

59

3

63

6

67

3

72

3

V.S.

2

78

STRINGS

84

90

96

101

18

Atlantic Starr - Always Look On The Bright Side Of Life

MELODY

♩ = 110,000916

4

8

12

16

21

25

29

33

38

42

V.S.



MELODY

91



95



99



102



18

Atlantic Starr - Always Look On The Bright Side Of Life

A.PIANO 1

♩ = 110,000916

17

22

25

28

31

36

42

45

48



56

59

62

67

72

91

93

96

98

101

103

Musical notation for piano part 1, measures 103-110. The notation is on a single staff with a treble clef. Measure 103 starts with a whole rest, followed by a quarter rest, a quarter note G4, a quarter note A4, a quarter note B4, and a quarter note C5. Measure 104 contains a quarter note D5, a quarter note E5, a quarter note F5, and a quarter note G5. Measure 105 contains a quarter note A5, a quarter note B5, a quarter note C6, and a quarter note D6. Measure 106 contains a quarter note E6, a quarter note F6, a quarter note G6, and a quarter note A6. Measure 107 contains a quarter note B6, a quarter note C7, a quarter note D7, and a quarter note E7. Measure 108 contains a quarter note F7, a quarter note G7, a quarter note A7, and a quarter note B7. Measure 109 contains a quarter note C8, a quarter note D8, a quarter note E8, and a quarter note F8. Measure 110 contains a quarter note G8, a quarter note A8, a quarter note B8, and a quarter note C9. The piece ends with a double bar line.

18