

# Madonna - Justify My Love

♩ = 397,001312

WinJammer Demo

WinJammer Demo

WinJammer Demo

WinJammer Demo

WinJammer Demo

WinJammer Demo

♩ = 397,001312

WinJammer Demo

WinJammer Demo

5

WinJammer Demo

WinJammer Demo

WinJammer Demo

WinJammer Demo

WinJammer Demo

WinJammer Demo



10

WinJammer Demo

WinJammer Demo

WinJammer Demo

WinJammer Demo

WinJammer Demo

WinJammer Demo

15

WinJammer Demo

WinJammer Demo

WinJammer Demo

WinJammer Demo

WinJammer Demo

WinJammer Demo



20

WinJammer Demo

WinJammer Demo

WinJammer Demo

WinJammer Demo

WinJammer Demo

WinJammer Demo

25

WinJammer Demo

WinJammer Demo

WinJammer Demo

WinJammer Demo

WinJammer Demo

WinJammer Demo



30

WinJammer Demo

WinJammer Demo

WinJammer Demo

WinJammer Demo

WinJammer Demo

WinJammer Demo

35

WinJammer Demo

WinJammer Demo

WinJammer Demo

WinJammer Demo

WinJammer Demo

WinJammer Demo

WinJammer Demo

WinJammer Demo



40

WinJammer Demo

WinJammer Demo

WinJammer Demo

WinJammer Demo

WinJammer Demo

WinJammer Demo

WinJammer Demo

WinJammer Demo

45

WinJammer Demo

WinJammer Demo

WinJammer Demo

WinJammer Demo

WinJammer Demo

WinJammer Demo



50

WinJammer Demo

WinJammer Demo

WinJammer Demo

WinJammer Demo

WinJammer Demo

WinJammer Demo

55

WinJammer Demo

WinJammer Demo

WinJammer Demo

WinJammer Demo

WinJammer Demo

WinJammer Demo

WinJammer Demo

WinJammer Demo



60

WinJammer Demo

WinJammer Demo

WinJammer Demo

WinJammer Demo

WinJammer Demo

WinJammer Demo

WinJammer Demo

WinJammer Demo

65

WinJammer Demo

WinJammer Demo

WinJammer Demo

WinJammer Demo

WinJammer Demo

WinJammer Demo

WinJammer Demo

WinJammer Demo



70

WinJammer Demo

WinJammer Demo

WinJammer Demo

WinJammer Demo

WinJammer Demo

WinJammer Demo

WinJammer Demo

WinJammer Demo





85

WinJammer Demo

WinJammer Demo

WinJammer Demo

WinJammer Demo

WinJammer Demo

WinJammer Demo

WinJammer Demo



90

WinJammer Demo

WinJammer Demo

WinJammer Demo

WinJammer Demo

WinJammer Demo

WinJammer Demo

WinJammer Demo

95

WinJammer Demo

WinJammer Demo

WinJammer Demo

WinJammer Demo

WinJammer Demo

WinJammer Demo

WinJammer Demo

WinJammer Demo



100

WinJammer Demo

WinJammer Demo

WinJammer Demo

WinJammer Demo

WinJammer Demo

WinJammer Demo

WinJammer Demo

WinJammer Demo

105

WinJammer Demo

WinJammer Demo

WinJammer Demo

WinJammer Demo

WinJammer Demo

WinJammer Demo

WinJammer Demo

This musical score covers measures 105 through 109. It features six staves. The top four staves are for guitar, with the first staff showing a single note in the third measure. The second staff contains a melodic line with eighth and quarter notes. The third staff has a bass line with dotted and quarter notes. The fourth staff is a guitar tablature with 'x' marks. The fifth staff is for bass, showing notes with sharps. The sixth staff is for drums, with various rhythmic symbols.



110

WinJammer Demo

WinJammer Demo

WinJammer Demo

WinJammer Demo

WinJammer Demo

WinJammer Demo

WinJammer Demo

This musical score covers measures 110 through 114. It features six staves. The top four staves are for guitar, with the first staff showing a single note in the second measure. The second staff contains a melodic line with eighth and quarter notes. The third staff has a bass line with dotted and quarter notes. The fourth staff is a guitar tablature with 'x' marks. The fifth staff is for bass, showing notes with sharps and slurs. The sixth staff is for drums, with various rhythmic symbols.

115

WinJammer Demo

WinJammer Demo

WinJammer Demo

WinJammer Demo

WinJammer Demo

WinJammer Demo

WinJammer Demo



120

WinJammer Demo

WinJammer Demo

WinJammer Demo

WinJammer Demo

WinJammer Demo

WinJammer Demo

WinJammer Demo

125

WinJammer Demo

WinJammer Demo

WinJammer Demo

WinJammer Demo

WinJammer Demo

WinJammer Demo

WinJammer Demo

WinJammer Demo



130

WinJammer Demo

WinJammer Demo

WinJammer Demo

WinJammer Demo

WinJammer Demo

WinJammer Demo

WinJammer Demo

WinJammer Demo



145

WinJammer Demo

WinJammer Demo

WinJammer Demo

WinJammer Demo

WinJammer Demo

WinJammer Demo



150

WinJammer Demo

WinJammer Demo

WinJammer Demo

WinJammer Demo

WinJammer Demo

WinJammer Demo



155

WinJammer Demo

WinJammer Demo

WinJammer Demo

WinJammer Demo

WinJammer Demo

WinJammer Demo

WinJammer Demo



160

WinJammer Demo

WinJammer Demo

WinJammer Demo

WinJammer Demo

WinJammer Demo

WinJammer Demo

WinJammer Demo

165

WinJammer Demo

WinJammer Demo

WinJammer Demo

WinJammer Demo

WinJammer Demo

WinJammer Demo



170

WinJammer Demo

WinJammer Demo

WinJammer Demo

WinJammer Demo

WinJammer Demo

WinJammer Demo

175

WinJammer Demo

WinJammer Demo

WinJammer Demo

WinJammer Demo

WinJammer Demo

WinJammer Demo

WinJammer Demo

WinJammer Demo



180

WinJammer Demo

WinJammer Demo

WinJammer Demo

WinJammer Demo

WinJammer Demo

WinJammer Demo

WinJammer Demo

WinJammer Demo

185

WinJammer Demo

WinJammer Demo

WinJammer Demo

WinJammer Demo

WinJammer Demo

WinJammer Demo

WinJammer Demo

WinJammer Demo



190

WinJammer Demo

WinJammer Demo

WinJammer Demo

WinJammer Demo

WinJammer Demo

WinJammer Demo

WinJammer Demo

WinJammer Demo

195

WinJammer Demo

WinJammer Demo

WinJammer Demo

WinJammer Demo

WinJammer Demo

WinJammer Demo

WinJammer Demo

WinJammer Demo



200

WinJammer Demo

WinJammer Demo

WinJammer Demo

WinJammer Demo

WinJammer Demo

WinJammer Demo

WinJammer Demo

WinJammer Demo

205

WinJammer Demo

WinJammer Demo

WinJammer Demo

WinJammer Demo

WinJammer Demo

WinJammer Demo



210

WinJammer Demo

WinJammer Demo

WinJammer Demo

WinJammer Demo

WinJammer Demo

WinJammer Demo

215

WinJammer Demo

WinJammer Demo

WinJammer Demo

WinJammer Demo

WinJammer Demo

WinJammer Demo

WinJammer Demo

WinJammer Demo



220

WinJammer Demo

WinJammer Demo

WinJammer Demo

WinJammer Demo

WinJammer Demo

WinJammer Demo

WinJammer Demo

WinJammer Demo

WinJammer Demo

Four staves of guitar tablature. The first staff shows a single note on the first string, first fret. The second staff shows a sequence of notes: first string first fret, first string second fret, first string third fret, and first string fourth fret. The third and fourth staves show rhythmic patterns with 'x' marks indicating fretted notes.

WinJammer Demo

First staff of a musical score in treble clef. It begins with a key signature of one flat (Bb) and a common time signature (C). The melody consists of a half note on Bb, followed by a quarter note on C, a quarter note on D, and a quarter note on E, all beamed together. The staff ends with a whole rest.

WinJammer Demo

Second staff of a musical score in treble clef. It begins with a key signature of two flats (Bb, Eb) and a common time signature (C). The melody consists of a half note on Bb, followed by a quarter note on C, a quarter note on D, and a quarter note on E, all beamed together. The staff ends with a whole rest.

WinJammer Demo

Third staff of a musical score in bass clef. It begins with a key signature of two flats (Bb, Eb) and a common time signature (C). The melody consists of a half note on Bb, followed by a quarter note on C, a quarter note on D, and a quarter note on E, all beamed together. The staff ends with a whole rest.



♩ = 397,001312

2 3 3

12 3 3 3

24 3 3 3

36 3 3 3

48 3 3 3

60 3 3 3

72 3 3 3

84 3 3 3

96 3 3 3

108 3 3 3

119



131



143



155



167



179



191



203



215







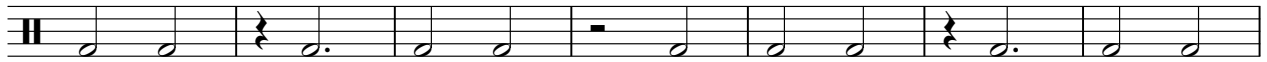
141



148



155



162



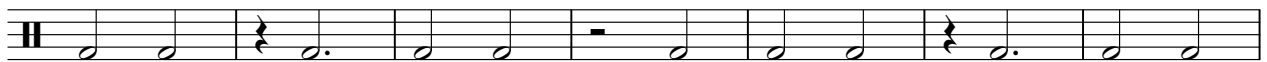
169



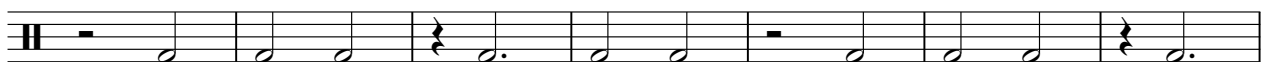
176



183



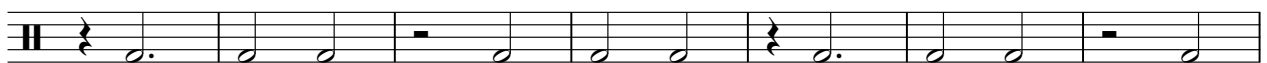
190



197



204



V.S.





78



86



94



102



110



118



126



134



142



150







♩ = 397,001312



7



13



19



25



31



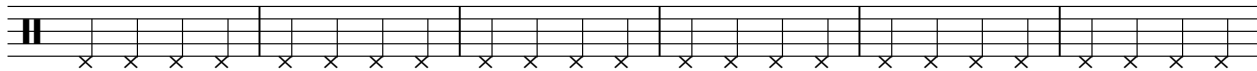
37



43



49



55



V.S.

61



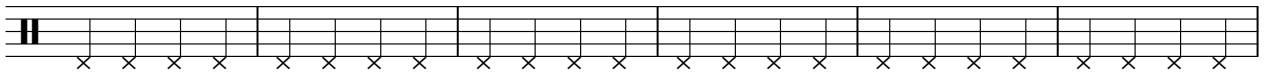
67



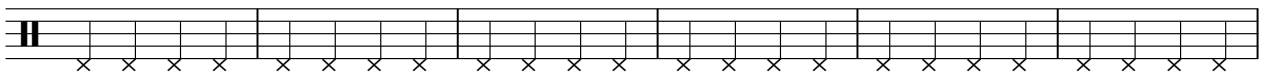
73



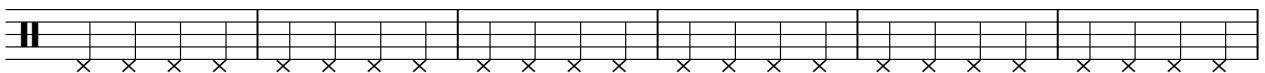
79



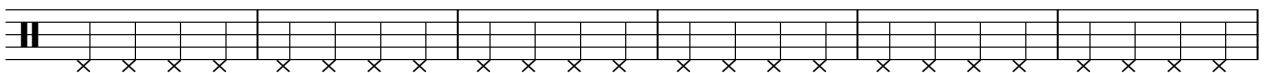
85



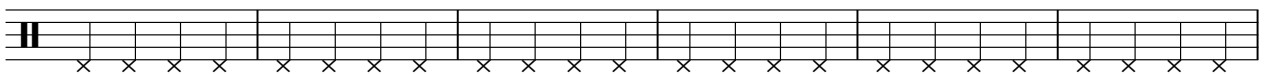
91



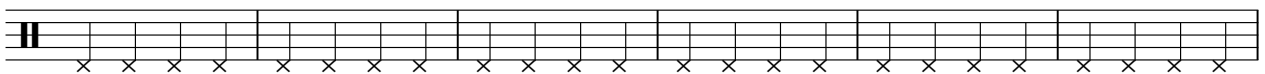
97



103



109



115



121



127



133



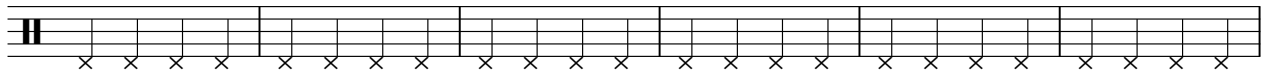
139



145



151



157



163



169



175



V.S.

181



187



193



199



205



211



217



222



3



91 Musical staff starting at measure 91. It contains six eighth notes with flats, each beamed together and underlined. The seventh measure contains a quarter rest, with a large bracket labeled '31' spanning the entire staff from measure 91 to the end of the staff.

128 Musical staff starting at measure 128. It begins with a quarter rest, followed by seven eighth notes with flats, each beamed together and underlined. The eighth measure contains a quarter rest.

137 Musical staff starting at measure 137. It contains eight eighth notes with flats, each beamed together and underlined. The ninth measure contains a quarter rest.

146 Musical staff starting at measure 146. It contains seven eighth notes with flats, each beamed together and underlined. The eighth measure contains a quarter rest, followed by two eighth notes with flats, beamed together and underlined.

155 Musical staff starting at measure 155. It contains five eighth notes with flats, each beamed together and underlined. The sixth measure contains a quarter rest, followed by three eighth notes with flats, beamed together and underlined.

164 Musical staff starting at measure 164. It contains nine eighth notes with flats, each beamed together and underlined.

173 Musical staff starting at measure 173. It contains three eighth notes with flats, beamed together and underlined. The fourth measure contains a quarter rest, followed by six eighth notes with flats, beamed together and underlined.

182 Musical staff starting at measure 182. It contains ten eighth notes with flats, each beamed together and underlined.

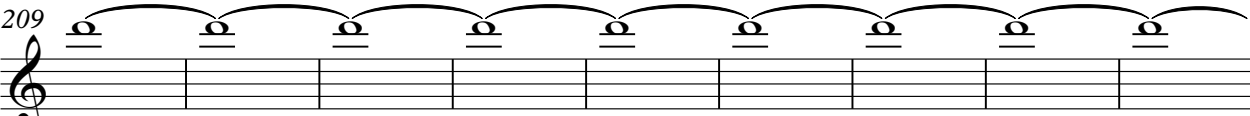
191 Musical staff starting at measure 191. It begins with an eighth note with a flat, beamed and underlined. The second measure contains a quarter rest, followed by seven eighth notes with flats, beamed together and underlined.

200 Musical staff starting at measure 200. It contains seven eighth notes with flats, each beamed together and underlined. The eighth measure contains a quarter rest.

WinJammer Demo

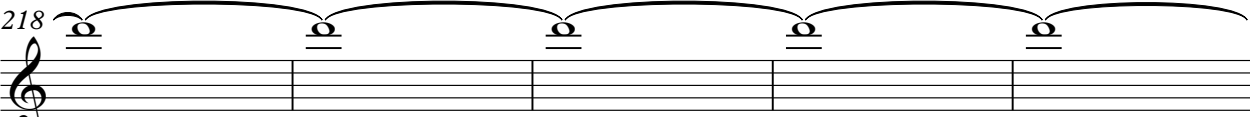
3

209



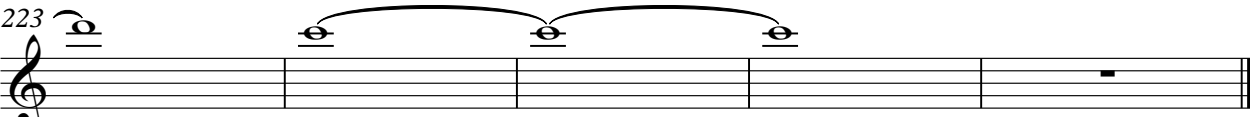
A musical staff in treble clef containing measures 209 through 217. Each measure contains a single eighth note on the second line of the staff (F4), with a slur spanning across all ten measures.

218



A musical staff in treble clef containing measures 218 through 222. Each measure contains a single eighth note on the second line of the staff (F4), with a slur spanning across all five measures.

223



A musical staff in treble clef containing measures 223 through 227. Measure 223 contains a single eighth note on the second line of the staff (F4). Measures 224 and 225 contain eighth notes on the second line of the staff (F4), with a slur spanning across these two measures. Measures 226 and 227 are empty.









♩ = 397,001312

34

34

40

40

48

48

58

58

69

69

79

79

89

89

97

97

113

113



♩ = 397,001312

96

105

2

112

3

122

2

128

99