

Madonna - Keep It Together

♩ = 112,000061

Drums & Percussion

Synth (3=ElecGP;6=Vibe)

3

Drums & Percussion

Guitar (ElecClean)

Bass (ElecFing)

5

Drums & Percussion

Guitar (ElecClean)

Bass (ElecFing)

7

Drums & Percussion

Synth (3=ElecGP;6=Vibe)

Guitar (ElecClean)

Bass (ElecFing)

9

Drums & Percussion

Synth (3=ElecGP;6=Vibe)

Guitar (ElecClean)

Bass (ElecFing)

11

Madonna (A.Sax)

Drums & Percussion

Synth (3=ElecGP;6=Vibe)

Guitar (ElecClean)

Bass (ElecFing)

Niki & Donna (SynVoice)

13

Madonna (A.Sax)

Drums & Percussion

Synth (3=ElecGP;6=Vibe)

Guitar (ElecClean)

Bass (ElecFing)

Niki & Donna (SynVoice)

15

Madonna (A.Sax)

Drums & Percussion

Synth (3=ElecGP;6=Vibe)

Guitar (ElecClean)

Bass (ElecFing)

Niki & Donna (SynVoice)

17

Madonna (A.Sax)

Drums & Percussion

Synth (3=ElecGP;6=Vibe)

Guitar (ElecClean)

Bass (ElecFing)

Niki & Donna (SynVoice)

19

Madonna (A.Sax)

Drums & Percussion

Synth (3=ElecGP;6=Vibe)

Bass (ElecFing)

21

Madonna (A.Sax)

Drums & Percussion

Synth (3=ElecGP;6=Vibe)

Bass (ElecFing)

23

Madonna (A.Sax)

Drums & Percussion

Synth (3=ElecGP;6=Vibe)

Bass (ElecFing)

24

Madonna (A.Sax)

Drums & Percussion

Synth (3=ElecGP;6=Vibe)

Bass (ElecFing)

25

Madonna (A.Sax)

Drums & Percussion

Synth (3=ElecGP;6=Vibe)

Bass (ElecFing)

27

Madonna (A.Sax)

Drums & Percussion

Synth (3=ElecGP;6=Vibe)

Guitar (ElecClean)

Bass (ElecFing)

28

Madonna (A.Sax)

Drums & Percussion

Synth (3=ElecGP;6=Vibe)

Guitar (ElecClean)

Bass (ElecFing)

30

Madonna (A.Sax)

Drums & Percussion

Synth (3=ElecGP;6=Vibe)

Guitar (ElecClean)

Bass (ElecFing)

31

Madonna (A.Sax)

Drums & Percussion

Synth (3=ElecGP;6=Vibe)

Guitar (ElecClean)

Bass (ElecFing)

Niki & Donna (SynVoice)

32

Madonna (A.Sax)

Drums & Percussion

Synth (3=ElecGP;6=Vibe)

Guitar (ElecClean)

Bass (ElecFing)

Niki & Donna (SynVoice)

33

Madonna (A.Sax)

Drums & Percussion

Synth (3=ElecGP;6=Vibe)

Guitar (ElecClean)

Bass (ElecFing)

Niki & Donna (SynVoice)

34

Madonna (A.Sax)

Drums & Percussion

Synth (3=ElecGP;6=Vibe)

Guitar (ElecClean)

Bass (ElecFing)

Niki & Donna (SynVoice)

35

Madonna (A.Sax)

Drums & Percussion

Synth (3=ElecGP;6=Vibe)

Guitar (ElecClean)

Bass (ElecFing)

Niki & Donna (SynVoice)

37

Madonna (A.Sax)

Drums & Percussion

Synth (3=ElecGP;6=Vibe)

Guitar (ElecClean)

Bass (ElecFing)

Niki & Donna (SynVoice)

39

Madonna (A.Sax)

Drums & Percussion

Synth (3=ElecGP;6=Vibe)

Guitar (ElecClean)

Bass (ElecFing)

Niki & Donna (SynVoice)

41

Madonna (A.Sax)

Drums & Percussion

Synth (3=ElecGP;6=Vibe)

Guitar (ElecClean)

Bass (ElecFing)

Niki & Donna (SynVoice)

43

Madonna (A.Sax)

Drums & Percussion

Synth (3=ElecGP;6=Vibe)

Guitar (ElecClean)

Bass (ElecFing)

Niki & Donna (SynVoice)

45

Madonna (A.Sax)

Drums & Percussion

Synth (3=ElecGP;6=Vibe)

Bass (ElecFing)

46

Madonna (A.Sax)

Drums & Percussion

Synth (3=ElecGP;6=Vibe)

Bass (ElecFing)

47

Madonna (A.Sax)

Drums & Percussion

Synth (3=ElecGP;6=Vibe)

Bass (ElecFing)

48

Madonna (A.Sax)

Drums & Percussion

Synth (3=ElecGP;6=Vibe)

Bass (ElecFing)

49

Madonna (A.Sax)

Drums & Percussion

Synth (3=ElecGP;6=Vibe)

Bass (ElecFing)

50

Madonna (A.Sax)

Drums & Percussion

Synth (3=ElecGP;6=Vibe)

Bass (ElecFing)

51

Madonna (A.Sax)

Drums & Percussion

Synth (3=ElecGP;6=Vibe)

Bass (ElecFing)

52

Madonna (A.Sax)

Drums & Percussion

Synth (3=ElecGP;6=Vibe)

Bass (ElecFing)

53

Madonna (A.Sax)

Drums & Percussion

Synth (3=ElecGP;6=Vibe)

Guitar (ElecClean)

Bass (ElecFing)

54

Madonna (A.Sax)

Drums & Percussion

Synth (3=ElecGP;6=Vibe)

Guitar (ElecClean)

Bass (ElecFing)

56

Madonna (A.Sax)

Drums & Percussion

Synth (3=ElecGP;6=Vibe)

Guitar (ElecClean)

Bass (ElecFing)

57

Madonna (A.Sax)

Drums & Percussion

Synth (3=ElecGP;6=Vibe)

Guitar (ElecClean)

Bass (ElecFing)

Niki & Donna (SynVoice)

58

Madonna (A.Sax)

Drums & Percussion

Synth (3=ElecGP;6=Vibe)

Guitar (ElecClean)

Bass (ElecFing)

Niki & Donna (SynVoice)

59

Madonna (A.Sax)

Drums & Percussion

Synth (3=ElecGP;6=Vibe)

Guitar (ElecClean)

Bass (ElecFing)

Niki & Donna (SynVoice)

60

Madonna (A.Sax)

Drums & Percussion

Synth (3=ElecGP;6=Vibe)

Guitar (ElecClean)

Bass (ElecFing)

Niki & Donna (SynVoice)

61

Madonna (A.Sax)

Drums & Percussion

Synth (3=ElecGP;6=Vibe)

Guitar (ElecClean)

Bass (ElecFing)

Niki & Donna (SynVoice)

63

Madonna (A.Sax)

Drums & Percussion

Synth (3=ElecGP;6=Vibe)

Guitar (ElecClean)

Bass (ElecFing)

Niki & Donna (SynVoice)

65

Madonna (A.Sax)

Drums & Percussion

Synth (3=ElecGP;6=Vibe)

Guitar (ElecClean)

Bass (ElecFing)

Niki & Donna (SynVoice)

67

Madonna (A.Sax)

Drums & Percussion

Synth (3=ElecGP;6=Vibe)

Guitar (ElecClean)

Bass (ElecFing)

Niki & Donna (SynVoice)

69

Madonna (A.Sax)

Drums & Percussion

Synth (3=ElecGP;6=Vibe)

Guitar (ElecClean)

Bass (ElecFing)

Niki & Donna (SynVoice)

71

Madonna (A.Sax)

Drums & Percussion

Synth (3=ElecGP;6=Vibe)

Guitar (ElecClean)

Bass (ElecFing)

Niki & Donna (SynVoice)

73

Madonna (A.Sax)

Drums & Percussion

Synth (3=ElecGP;6=Vibe)

Guitar (ElecClean)

Bass (ElecFing)

Niki & Donna (SynVoice)

75

Madonna (A.Sax)

Drums & Percussion

Synth (3=ElecGP;6=Vibe)

Guitar (ElecClean)

Bass (ElecFing)

Niki & Donna (SynVoice)

77

Madonna (A.Sax)

Drums & Percussion

Synth (3=ElecGP;6=Vibe)

Guitar (ElecClean)

Bass (ElecFing)

Niki & Donna (SynVoice)

79

Madonna (A.Sax)

Drums & Percussion

Guitar (ElecClean)

Bass (ElecFing)

Niki & Donna (SynVoice)

81

Madonna (A.Sax)

Drums & Percussion

Guitar (ElecClean)

Bass (ElecFing)

83

Madonna (A.Sax)

Drums & Percussion

Synth (3=ElecGP;6=Vibe)

Guitar (ElecClean)

Bass (ElecFing)

Niki & Donna (SynVoice)

85

Madonna (A.Sax)

Drums & Percussion

Synth (3=ElecGP;6=Vibe)

Guitar (ElecClean)

Bass (ElecFing)

Niki & Donna (SynVoice)

87

Madonna (A.Sax)

Drums & Percussion

Synth (3=ElecGP;6=Vibe)

Guitar (ElecClean)

Bass (ElecFing)

88

Madonna (A.Sax)

Drums & Percussion

Synth (3=ElecGP;6=Vibe)

Bass (ElecFing)

89

Madonna (A.Sax)

Drums & Percussion

Synth (3=ElecGP;6=Vibe)

Guitar (ElecClean)

Bass (ElecFing)

90

Madonna (A.Sax)

Drums & Percussion

Synth (3=ElecGP;6=Vibe)

Guitar (ElecClean)

Bass (ElecFing)

91

Madonna (A.Sax)

Drums & Percussion

Synth (3=ElecGP;6=Vibe)

Guitar (ElecClean)

Bass (ElecFing)

Niki & Donna (SynVoice)

92

Madonna (A.Sax)

Drums & Percussion

Synth (3=ElecGP;6=Vibe)

Bass (ElecFing)

Niki & Donna (SynVoice)

93

Madonna (A.Sax)

Drums & Percussion

Synth (3=ElecGP;6=Vibe)

Bass (ElecFing)

Niki & Donna (SynVoice)

94

Madonna (A.Sax)

Drums & Percussion

Synth (3=ElecGP;6=Vibe)

Guitar (ElecClean)

Bass (ElecFing)

Niki & Donna (SynVoice)

96

Madonna (A.Sax)

Drums & Percussion

Synth (3=ElecGP;6=Vibe)

Guitar (ElecClean)

Bass (ElecFing)

Niki & Donna (SynVoice)

98

Madonna (A.Sax)

Drums & Percussion

Synth (3=ElecGP;6=Vibe)

Guitar (ElecClean)

Bass (ElecFing)

Niki & Donna (SynVoice)

100

Madonna (A.Sax)

Drums & Percussion

Synth (3=ElecGP;6=Vibe)

Guitar (ElecClean)

Bass (ElecFing)

Niki & Donna (SynVoice)

102

Madonna (A.Sax)

Drums & Percussion

Synth (3=ElecGP;6=Vibe)

Guitar (ElecClean)

Bass (ElecFing)

Niki & Donna (SynVoice)

104

Madonna (A.Sax)

Drums & Percussion

Synth (3=ElecGP;6=Vibe)

Guitar (ElecClean)

Bass (ElecFing)

Niki & Donna (SynVoice)

105

Madonna (A.Sax)

Drums & Percussion

Synth (3=ElecGP;6=Vibe)

Guitar (ElecClean)

Bass (ElecFing)

Niki & Donna (SynVoice)

107

Madonna (A.Sax)

Drums & Percussion

Synth (3=ElecGP;6=Vibe)

Guitar (ElecClean)

Bass (ElecFing)

Niki & Donna (SynVoice)

109

Madonna (A.Sax)

Drums & Percussion

Synth (3=ElecGP;6=Vibe)

Guitar (ElecClean)

Bass (ElecFing)

Niki & Donna (SynVoice)

111

Madonna (A.Sax)

Drums & Percussion

Synth (3=ElecGP;6=Vibe)

Guitar (ElecClean)

Bass (ElecFing)

Niki & Donna (SynVoice)

113

Madonna (A.Sax)

Drums & Percussion

Synth (3=ElecGP;6=Vibe)

Guitar (ElecClean)

Bass (ElecFing)

Niki & Donna (SynVoice)

115

Madonna (A.Sax)

Drums & Percussion

Synth (3=ElecGP;6=Vibe)

Guitar (ElecClean)

Bass (ElecFing)

Niki & Donna (SynVoice)

117

Madonna (A.Sax)

Drums & Percussion

Synth (3=ElecGP;6=Vibe)

Guitar (ElecClean)

Bass (ElecFing)

Niki & Donna (SynVoice)

119

Madonna (A.Sax)

Drums & Percussion

Bass (ElecFing)

Niki & Donna (SynVoice)

121

Madonna (A.Sax)

Drums & Percussion

Bass (ElecFing)

Niki & Donna (SynVoice)

123

Madonna (A.Sax)

Drums & Percussion

Bass (ElecFing)

Niki & Donna (SynVoice)

125

Madonna (A.Sax)

Drums & Percussion

Bass (ElecFing)

Niki & Donna (SynVoice)

This system covers measures 125 and 126. The Madonna (A.Sax) and Niki & Donna (SynVoice) parts are identical, featuring a melody of eighth and sixteenth notes. The Drums & Percussion part has a steady eighth-note pattern. The Bass (ElecFing) part has a sparse, syncopated line.

127

Madonna (A.Sax)

Drums & Percussion

Bass (ElecFing)

Niki & Donna (SynVoice)

This system covers measures 127 and 128. The Madonna (A.Sax) and Niki & Donna (SynVoice) parts are identical. The Drums & Percussion part continues with a steady eighth-note pattern. The Bass (ElecFing) part has a sparse, syncopated line.

129

Madonna (A.Sax)

Drums & Percussion

Bass (ElecFing)

Niki & Donna (SynVoice)

This system covers measures 129 and 130. The Madonna (A.Sax) and Niki & Donna (SynVoice) parts are identical. The Drums & Percussion part continues with a steady eighth-note pattern. The Bass (ElecFing) part has a sparse, syncopated line.

131

Madonna (A.Sax)

Drums & Percussion

Bass (ElecFing)

Niki & Donna (SynVoice)

133

Madonna (A.Sax)

Drums & Percussion

Bass (ElecFing)

Niki & Donna (SynVoice)

134

Madonna (A.Sax)

Drums & Percussion

Bass (ElecFing)

Niki & Donna (SynVoice)

♩ = 112,000061
10

15

20

24

28

32

36

40

88

92

96

100

104

109

113

117

121

125

V.S.

129



132



Drums & Percussion

Madonna - Keep It Together

♩ = 112,000061

4

7

10

13

16

19

22

24

26

V.S.

28



30



33



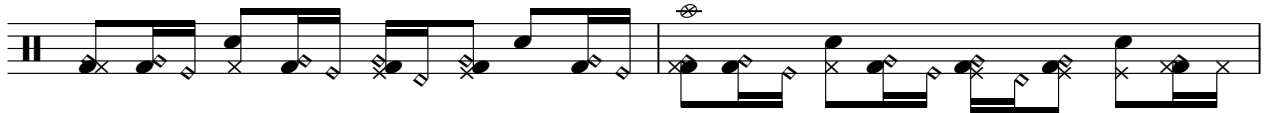
35



37



40



42



44



47



49



51

Musical notation for measure 51, featuring a drum set icon on the left and a staff with rhythmic notation including eighth and sixteenth notes.

53

Musical notation for measure 53, featuring a drum set icon on the left and a staff with rhythmic notation including eighth and sixteenth notes.

55

Musical notation for measure 55, featuring a drum set icon on the left and a staff with rhythmic notation including eighth and sixteenth notes.

57

Musical notation for measure 57, featuring a drum set icon on the left and a staff with rhythmic notation including eighth and sixteenth notes.

60

Musical notation for measure 60, featuring a drum set icon on the left and a staff with rhythmic notation including eighth and sixteenth notes.

62

Musical notation for measure 62, featuring a drum set icon on the left and a staff with rhythmic notation including eighth and sixteenth notes.

64

Musical notation for measure 64, featuring a drum set icon on the left and a staff with rhythmic notation including eighth and sixteenth notes.

67

Musical notation for measure 67, featuring a drum set icon on the left and a staff with rhythmic notation including eighth and sixteenth notes.

70

Musical notation for measure 70, featuring a drum set icon on the left and a staff with rhythmic notation including eighth and sixteenth notes.

73

Musical notation for measure 73, featuring a drum set icon on the left and a staff with rhythmic notation including eighth and sixteenth notes.

V.S.

77

81

85

88

90

93

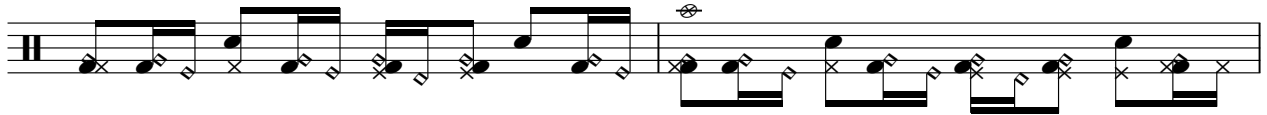
96

100

103

105

108



110



113



116



119



122



125



128



132



Madonna - Keep It Together

Synth (3=ElecGP;6=Vibe)

♩ = 112,000061

6

10

15

21

29

36

41

47

53

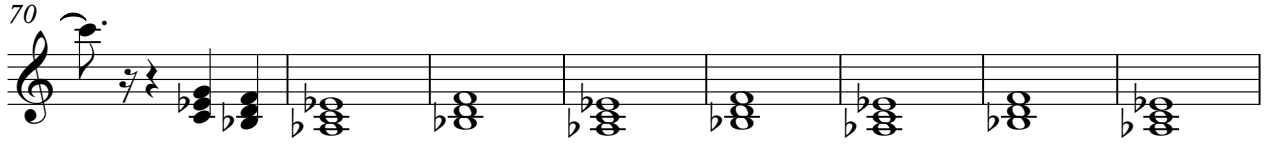
60

V.S.

65



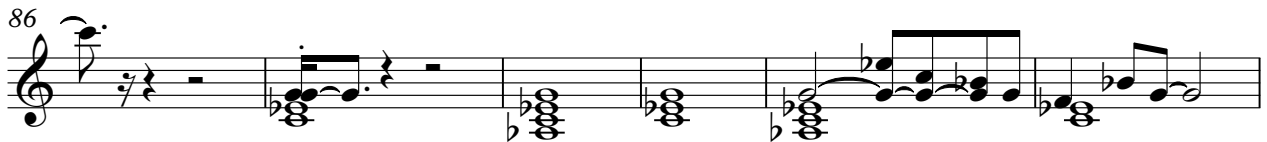
70



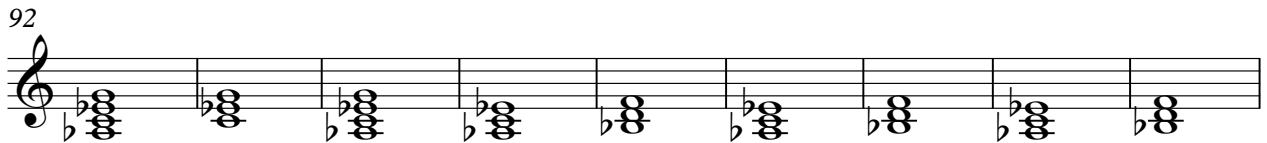
78



86



92



101



107



112



116



♩ = 112,000061

2

7

12

17

8

29

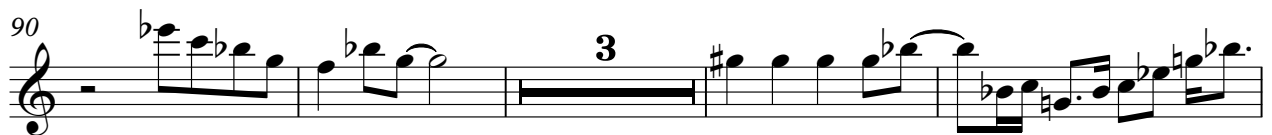
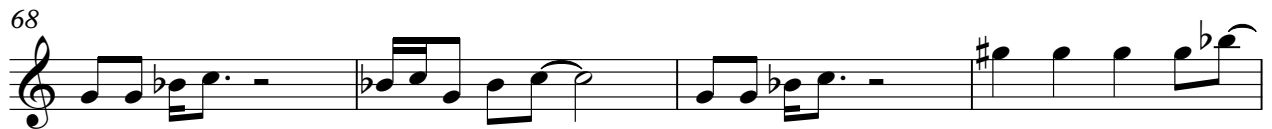
7

34

39

43

8





Madonna - Keep It Together

Bass (ElecFing)

♩ = 112,000061

2



V.S.

42



46



50



54



58



62



66



70



74



78



82



86



90



94



98



102



106



110



114



118



V.S.

122



126



130



133



♩ = 112,000061

10

13

17

12

32

35

40

13

57

60

65

68

115



118



121



124



127



130



133

