

Banda Greg - Blindagem Se Eu Tivesse Greg

♩ = 109,999908

..u..f..r

Musical score for the first system, measures 1-3. The score is in 4/4 time and includes parts for Percussion, two Electric Guitars, Kora, and Electric Bass. The Percussion part features a complex rhythmic pattern. The Electric Guitars play a melodic line with a triplet in measure 3. The Kora part is silent. The Electric Bass provides a steady bass line.

Musical score for the second system, measures 4-6. The score continues with Percussion, two Electric Guitars, and Electric Bass. The Percussion part continues with its rhythmic pattern. The Electric Guitars play a melodic line with a triplet in measure 5. The Electric Bass provides a steady bass line.

2

6

Perc.

E. Gtr.

E. Gtr.

E. Bass

8

Perc.

E. Gtr.

E. Gtr.

E. Bass

10

Perc.

E. Gtr.

E. Gtr.

Kora

E. Bass

Quando QUANDO notte NOTTE

12

Perc.

E. Gtr. CHEGA AS ESFERAS LAMBAM O NEL OMBAR

Kora

E. Bass

14

Perc.

E. Gtr. SAO AS LUZES DOS MEUS

Kora

E. Bass

16

Perc.

E. Gtr. SONHOS QUE VOLTAM VOSSA ESFORÇAR

Kora

E. Bass

18

Perc.

E. Gtr.

Kora

E. Bass

se eu tivesse o teu

20

Perc.

E. Gtr.

Kora

E. Bass

olhar poderia ver as luz

22

Perc.

E. Gtr.

Kora

E. Bass

e nada mais faria

24

Perc.

E. Gtr.

Kora

E. Bass

so pra: vivia mesmo

26

Perc.

E. Gtr.

Kora

E. Bass

me mundo pare: girar

28

Perc.

E. Gtr.

Kora

E. Bass

eu tivesse teu olhar

30

Perc.

E. Gtr.

Kora

E. Bass

poderia ver as luz

32

Perc.

E. Gtr.

Kora

E. Bass

e nada mais faria

34

Perc.

E. Gtr.

Kora

E. Bass

so pa vivia mesm.

36

Perc.

E. Gtr. gue: mundo pare gitar

Kora

E. Bass

38

Perc.

E. Gtr. ho ho ho huu

Kora

E. Bass

40

Perc.

E. Gtr.

Kora

E. Bass

42

Perc. E. Gtr. E. Gtr. Kora E. Bass

This system contains measures 42 and 43. The Percussion part features a complex rhythmic pattern with accents and slurs. The two Electric Guitar parts play chords and melodic lines, with a triplet in the second guitar part at measure 43. The Kora part is silent. The Electric Bass part provides a steady bass line with a triplet at the end of measure 43.

44

Perc. E. Gtr. E. Gtr. E. Bass

This system contains measures 44 and 45. The Percussion part continues with a rhythmic pattern. The two Electric Guitar parts play chords and melodic lines, with a triplet in the second guitar part at measure 45. The Electric Bass part provides a steady bass line.

46

Perc. E. Gtr. E. Gtr. E. Bass

This system contains measures 46 and 47. The Percussion part continues with a rhythmic pattern. The two Electric Guitar parts play chords and melodic lines. The Electric Bass part provides a steady bass line.

48

Perc.

E. Gtr.

E. Gtr.

E. Bass

50

Perc.

E. Gtr.

E. Gtr.

Kora

E. Bass

Quando a noite chega

52

Perc.

E. Gtr.

Kora

E. Bass

e as estrelas lembram o teu olhar

54

Perc.

E. Gtr.

Kora

E. Bass

sao as luzes dos

56

Perc.

E. Gtr.

Kora

E. Bass

teus sonhos que voltam a esforçar

58

Perc.

E. Gtr.

Kora

E. Bass

se eu tivesse eu olhar

60

Perc. E. Gtr. Kora E. Bass

poderia ver as luz

This system contains measures 60 and 61. The Percussion part features a rhythmic pattern with a triplet of eighth notes in the first measure. The Electric Guitar part consists of a series of chords, with lyrics 'poderia ver as luz' written above. The Kora part has a melodic line with a triplet of eighth notes in the second measure. The Electric Bass part provides a bass line with a triplet of eighth notes in the second measure.

62

Perc. E. Gtr. Kora E. Bass

e nada mais faria

This system contains measures 62 and 63. The Percussion part has a rhythmic pattern with a triplet of eighth notes in the second measure. The Electric Guitar part consists of chords with lyrics 'e nada mais faria' written above. The Kora part has a melodic line. The Electric Bass part has a bass line with a triplet of eighth notes in the second measure.

64

Perc. E. Gtr. Kora E. Bass

so pra ti vivia mesmo

This system contains measures 64 and 65. The Percussion part has a rhythmic pattern with triplets of eighth notes in the first and second measures. The Electric Guitar part consists of chords with lyrics 'so pra ti vivia mesmo' written above. The Kora part has a melodic line. The Electric Bass part has a bass line with triplets of eighth notes in the first and second measures.

66

Perc. que o mundo pare de girar

E. Gtr.

Kora

E. Bass

68

Perc. Quando a noite chega

E. Gtr.

Kora

E. Bass

70

Perc. as estrelas lembram as estrelas

E. Gtr.

Kora

E. Bass

72

Perc. E. Gtr. Kora E. Bass

sao as luzes dos teus

3

3

Detailed description: This system covers measures 72 and 73. The Percussion part features a steady eighth-note pattern. The Electric Guitar part plays a series of chords, with a triplet of eighth notes in measure 73. The Kora part has a melodic line with a triplet in measure 73. The Electric Bass part provides a simple bass line.

74

Perc. E. Gtr. Kora E. Bass

sonhos que voltam a esfregar

3

Detailed description: This system covers measures 74 and 75. The Percussion part continues with eighth notes. The Electric Guitar part features a triplet of eighth notes in measure 75. The Kora part has a melodic line. The Electric Bass part continues with a simple bass line.

76

Perc. E. Gtr. Kora E. Bass

eu tivesse teu olhar

3

Detailed description: This system covers measures 76 and 77. The Percussion part continues with eighth notes. The Electric Guitar part features a triplet of eighth notes in measure 77. The Kora part has a melodic line. The Electric Bass part continues with a simple bass line.

78

Perc.

E. Gtr.

Kora

E. Bass

podere

luz

80

Perc.

E. Gtr.

Kora

E. Bass

e nada mais faria

82

Perc.

E. Gtr.

Kora

E. Bass

so

vivia mesmo

84

Perc. E. Gtr. Kora E. Bass

mund pare gi

Detailed description: This system covers measures 84 and 85. The percussion part features a steady eighth-note pattern. The electric guitar part has a complex texture with many beamed notes and rests. The vocal line includes the lyrics 'mund', 'pare', and 'gi'. The Kora and electric bass parts provide a rhythmic and harmonic foundation.

86

Perc. E. Gtr. Kora E. Bass

eu tivesse

Detailed description: This system covers measures 86 and 87. The percussion part includes a triplet of eighth notes. The electric guitar part features a triplet of sixteenth notes. The vocal line includes the lyrics 'eu' and 'tivesse'. The Kora and electric bass parts continue the rhythmic accompaniment.

88

Perc. E. Gtr. Kora E. Bass

se eu tivesse

Detailed description: This system covers measures 88 and 89. The percussion part includes a triplet of eighth notes. The electric guitar part features a triplet of sixteenth notes. The vocal line includes the lyrics 'se', 'eu', and 'tivesse'. The Kora and electric bass parts continue the rhythmic accompaniment.

90

Perc.

E. Gtr.

E. Gtr.

Kora

E. Bass

92

Perc.

E. Gtr.

E. Gtr.

E. Bass

94

Perc.

E. Gtr.

E. Gtr.

E. Bass

96

Perc. E. Gtr. E. Gtr. E. Bass

This system contains measures 96 and 97. It features four staves: Percussion (Perc.), Electric Guitar (E. Gtr.), a second Electric Guitar (E. Gtr.), and Electric Bass (E. Bass). The Percussion staff has a complex rhythmic pattern with triplets. The first E. Gtr. staff has a melodic line with triplets. The second E. Gtr. staff has a chordal accompaniment with triplets. The E. Bass staff has a bass line with triplets.

98

Perc. E. Gtr. E. Gtr. Kora E. Bass

se eu tivesse se eu tivesse

This system contains measures 98, 99, and 100. It features five staves: Percussion (Perc.), Electric Guitar (E. Gtr.), a second Electric Guitar (E. Gtr.), Kora, and Electric Bass (E. Bass). The Percussion staff has a simple rhythmic pattern. The first E. Gtr. staff has rests. The second E. Gtr. staff has a chordal accompaniment. The Kora staff has a melodic line with triplets. The E. Bass staff has a bass line with triplets. The lyrics "se eu tivesse se eu tivesse" are written below the first two staves.

101

Perc. E. Gtr. Kora E. Bass

This system contains measures 101 and 102. It features four staves: Percussion (Perc.), Electric Guitar (E. Gtr.), Kora, and Electric Bass (E. Bass). The Percussion staff has a simple rhythmic pattern. The E. Gtr. staff has a melodic line. The Kora staff has a melodic line. The E. Bass staff has a bass line.

Banda Greg - Blindagem Se Eu Tivesse Greg

Percussion

♩ = 109,999908

u.f.r 2

6

10

Quando QUANDO não te não CHEGA E AS ESCURIDÕES

13

LEMBRAM O TEU OLHAR SÃO AS LUZES DOS MEUS

16

SONHOS QUE VOLTAM a se FORÇAR esforçar se

19

eu tivesse o teu olhar poderia ver as luz

22

e nada mais faria so pra ti vivia mesmo

26

que o mundo pare de girar se eu

29

tivesse o teu olhar poderia ver as luz e

33

nada mais faria so pra ti vivia mesmo que o mundo pare

V.S.

37

de girar ho ho ho huu

41

44

47

51

Quando a noite chega e as estrelas lembram o teu olhar

54

sao as luzes dos teus sonhos que voltam a esforçar

58

se eu tivesse o teu olhar poderia ver as luz

62

e nada mais faria so pra ti vivia mesmo

66

que o mundo pare de girar Quando

69

a noite chega e as estrelas lembram o teu olhar

72

Musical notation for measure 72, featuring a treble clef, a key signature of one flat, and a 3/4 time signature. The melody consists of eighth and quarter notes, with a triplet of eighth notes in the second measure. The lyrics are: "sao as luzes dos teus sonhos que voltam a esforçar".

76

Musical notation for measure 76, featuring a treble clef, a key signature of one flat, and a 3/4 time signature. The melody consists of eighth and quarter notes, with a triplet of eighth notes in the final measure. The lyrics are: "se eu tivesse o teu olhar poderia ver as luz".

80

Musical notation for measure 80, featuring a treble clef, a key signature of one flat, and a 3/4 time signature. The melody consists of eighth and quarter notes, with two triplet markings over eighth notes. The lyrics are: "e nada mais faria so pra ti vivia mesmo".

84

Musical notation for measure 84, featuring a treble clef, a key signature of one flat, and a 3/4 time signature. The melody consists of eighth and quarter notes, with a triplet of eighth notes in the final measure. The lyrics are: "que o mundo pare de girar se eu tivesse".

88

Musical notation for measure 88, featuring a treble clef, a key signature of one flat, and a 3/4 time signature. The melody consists of eighth and quarter notes, with a triplet of eighth notes in the first measure. The lyrics are: "se eu tivesse".

92

Musical notation for measure 92, featuring a treble clef, a key signature of one flat, and a 3/4 time signature. The melody consists of eighth and quarter notes.

96

Musical notation for measure 96, featuring a treble clef, a key signature of one flat, and a 3/4 time signature. The melody consists of eighth and quarter notes, with a triplet of eighth notes in the first measure. The lyrics are: "se".

99

Musical notation for measure 99, featuring a treble clef, a key signature of one flat, and a 3/4 time signature. The melody consists of eighth and quarter notes. The lyrics are: "eu tivesse se eu tivesse".

♩ = 109,999908

2

3

3

5

3

3

8

11

31

44

47

50

39

91

94

3

97

4

Banda Greg - Blindagem Se Eu Tivesse Greg

Electric Guitar

♩ = 109,999908

2

6

9

12

15

18

21

24

27

30

V.S.

33

3

3

36

3

39

3

43

3

3

46

3

50

3

55

3

59

3

63

3

67

3

70

73

76

79

81

84

86

89

92

95

Electric Guitar

98

The musical notation is written on a single staff with a treble clef. It begins with a key signature of one flat (B-flat) and a 4/4 time signature. The first measure contains a power chord (G5) with a flat sign above it. The second measure features a melodic line starting with a quarter note G4, followed by eighth notes A4, B4, and C5, and ending with a quarter rest. The third measure contains a power chord (A5) with a flat sign above it. The fourth measure contains a power chord (B5) with a flat sign above it. The fifth measure contains a power chord (C6) with a flat sign above it. The sixth measure contains a power chord (D6) with a flat sign above it. The seventh measure contains a power chord (E6) with a flat sign above it. The eighth measure contains a power chord (F6) with a flat sign above it. The ninth measure contains a power chord (G6) with a flat sign above it. The tenth measure contains a power chord (A6) with a flat sign above it. The eleventh measure contains a power chord (B6) with a flat sign above it. The twelfth measure contains a power chord (C7) with a flat sign above it. The thirteenth measure contains a power chord (D7) with a flat sign above it. The fourteenth measure contains a power chord (E7) with a flat sign above it. The fifteenth measure contains a power chord (F7) with a flat sign above it. The sixteenth measure contains a power chord (G7) with a flat sign above it. The seventeenth measure contains a power chord (A7) with a flat sign above it. The eighteenth measure contains a power chord (B7) with a flat sign above it. The nineteenth measure contains a power chord (C8) with a flat sign above it. The twentieth measure contains a power chord (D8) with a flat sign above it. The notation ends with a double bar line.

♩ = 109,999908

10

13

17

21

25

29

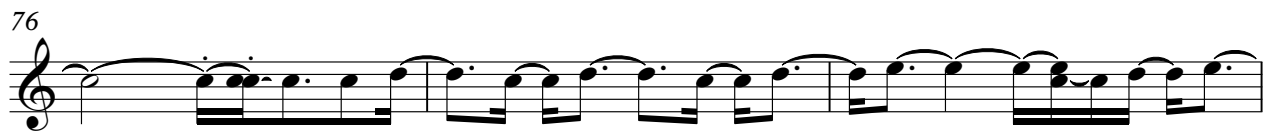
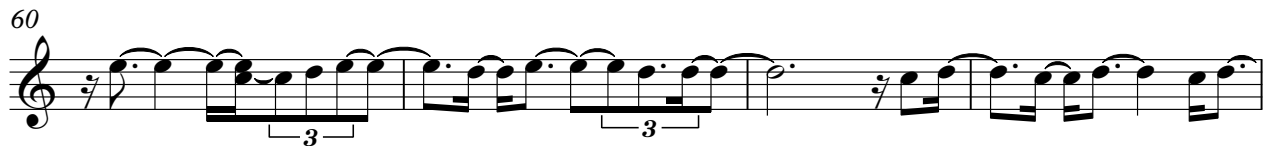
33

36

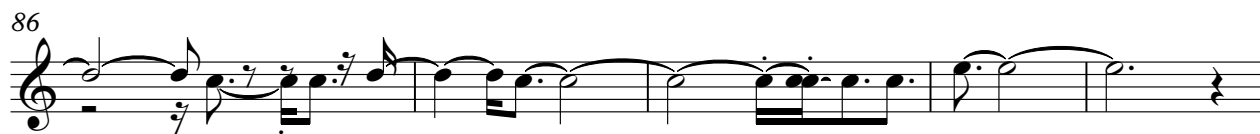
39

7

Detailed description of the musical score: The score is written for a Kora in 4/4 time. It begins with a tempo marking of 109,999908. The first staff contains a measure rest for 10 measures, followed by a melodic line starting with a triplet of eighth notes. The subsequent staves (13, 17, 21, 25, 29, 33, 36) continue the melodic development with various rhythmic patterns, including eighth and sixteenth notes, and some triplet markings. The final staff (39) concludes with a measure rest for 7 measures.



86



91



100



Banda Greg - Blindagem Se Eu Tivesse Greg

Electric Bass

♩ = 109,999908

2

6

9

13

16

19

22

25

28

31

V.S.

34



37



41



44



47



51



54



58



61



64



