

Barabara Streisand - Evergreen 2

♩ = 145,000031

Do You Do You St. Tro

Baritone Sax

Trumpet

Brush

Muted Gt.

Acoustic Bs.

Brass 1

♩ = 145,000031

Voice Oohs



4

Do You Do You St. Tro

Baritone Sax

Trumpet

Brush

Muted Gt.

Acoustic Bs.

Brass 1

8

Do You Do You St. Tro

Baritone Sax

Brush

Muted Gt.

Acoustic Bs.



12

Do You Do You St. Tro

Baritone Sax

Brush

Muted Gt.

Acoustic Bs.

15

Do You Do You St. Tro

Baritone Sax

Trumpet

Brush

Muted Gt.

Acoustic Bs.

Brass 1



18

Do You Do You St. Tro

Baritone Sax

Trumpet

Brush

Muted Gt.

Acoustic Bs.

Brass 1

21

Do You Do You St. Tro

Baritone Sax

Trumpet

Brush

Muted Gt.

Acoustic Bs.

Brass 1



25

Do You Do You St. Tro

Baritone Sax

Brush

Muted Gt.

Acoustic Bs.

29

Do You Do You St. Tro

Baritone Sax

Trumpet

Brush

Muted Gt.

Acoustic Bs.

Brass 1



32

Do You Do You St. Tro

Baritone Sax

Trumpet

Brush

Muted Gt.

Acoustic Bs.

Brass 1

35

Do You Do You St. Tro

Baritone Sax

Brush

Muted Gt.

Acoustic Bs.



38

Do You Do You St. Tro

Baritone Sax

Trumpet

Brush

Muted Gt.

Acoustic Bs.

Brass 1

Voice Oohs

41

Do You Do You St. Tro

Baritone Sax

Trumpet

Brush

Muted Gt.

Acoustic Bs.

Brass 1

Voice Oohs



44

Do You Do You St. Tro

Baritone Sax

Trumpet

Brush

Muted Gt.

Acoustic Bs.

Brass 1

Voice Oohs

47

Do You Do You St. Tro

Baritone Sax

Brush

Muted Gt.

Acoustic Bs.



51

Do You Do You St. Tro

Baritone Sax

Brush

Muted Gt.

Acoustic Bs.

55

Do You Do You St. Tro

Baritone Sax

Trumpet

Brush

Muted Gt.

Acoustic Bs.

Brass 1



58

Do You Do You St. Tro

Baritone Sax

Trumpet

Brush

Muted Gt.

Acoustic Bs.

Brass 1

61

Do You Do You St. Tro

Baritone Sax

Trumpet

Brush

Muted Gt.

Acoustic Bs.

Brass 1



65

Do You Do You St. Tro

Baritone Sax

Brush

Muted Gt.

Acoustic Bs.

69

Do You Do You St. Tro

Baritone Sax

Brush

Muted Gt.

Acoustic Bs.



73

Do You Do You St. Tro

Baritone Sax

Brush

Muted Gt.

Acoustic Bs.



77

Do You Do You St. Tro

Baritone Sax

Brush

Muted Gt.

Acoustic Bs.

81

Do You Do You St. Tro

Baritone Sax

Brush

Muted Gt.

Acoustic Bs.



84

Do You Do You St. Tro

Baritone Sax

Trumpet

Brush

Muted Gt.

Acoustic Bs.

Brass 1

Do You Do You St.Tro

Barabara Streisand - Evergreen 2

♩ = 145,000031

5

10

14

18

22

27

31

35

39

43

V.S.

Barabara Streisand - Evergreen 2

Baritone Sax

$\text{♩} = 145,000031$

2

7

11

15

19

23

27

31

35

38

V.S.

42



46



50



54



58



62



66



70



74



78



82



84



Trumpet

Barabara Streisand - Evergreen 2

♩ = 145,000031

5

18

31

37

43

56

62

Barabara Streisand - Evergreen 2

Brush

♩ = 145,000031

6

11

15

19

23

27

31

35

38

V.S.

Brush

The image displays a musical score for guitar brush technique, consisting of ten systems of music. Each system is labeled with a measure number: 42, 46, 51, 55, 59, 63, 67, 71, 75, and 79. The notation is written on a grand staff (treble and bass clefs) with a double bar line on the left side of each system. The music features a complex rhythmic pattern, primarily consisting of eighth and sixteenth notes, often beamed together. The upper staff (treble clef) contains a series of 'x' marks, which are standard notation for muted notes or specific brush techniques. The lower staff (bass clef) contains the corresponding rhythmic notation. The score is divided into measures by vertical bar lines, and the systems are separated by double bar lines. The overall style is that of a technical exercise or a specific rhythmic pattern for guitar brush playing.

Brush

83

The image shows a musical score for a guitar brush pattern. It consists of two staves. The top staff is a single-line staff with a treble clef, containing rhythmic notation with stems and flags, and 'x' marks above the notes. The bottom staff is a standard five-line guitar staff with a treble clef, containing a sequence of eighth and sixteenth notes. The notation is divided into four measures by vertical bar lines. The first measure has a double bar line at the beginning. The second measure ends with a double bar line. The third measure ends with a double bar line. The fourth measure ends with a double bar line and a final note.

Muted Gt.

Barabara Streisand - Evergreen 2

♩ = 145,000031

4

8

12

16

20

24

28

32

36

40

V.S.

44



48



52



56



60



64



68



72



76



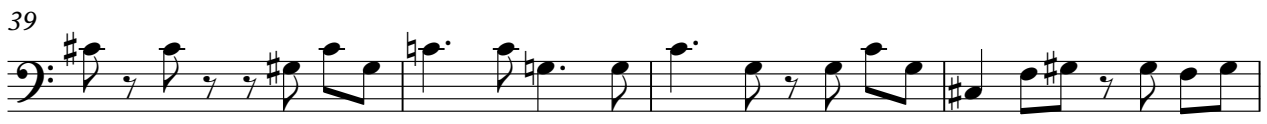
80



Barabara Streisand - Evergreen 2

Acoustic Bs.

♩ = 145,000031



V.S.

47



52



57



61



66



71



76



81



84



Barabara Streisand - Evergreen 2

Brass 1

♩ = 145,000031

4

9

16

2

22

8

34

2

41

46

9

59

2

63

22

Voice Oohs

Barabara Streisand - Evergreen 2

♩ = 145,000031

36

A musical staff in treble clef with a key signature of one sharp (F#). It starts with a 4/4 time signature, changes to 5/4 at measure 37, and returns to 4/4 at measure 38. Measure 36 is a whole rest. Measures 37 and 38 are also whole rests. Measure 39 contains a half note F#4. Measure 40 contains a half note G4. Measure 41 contains a quarter note A4, a quarter rest, and a quarter note G4.

42

A musical staff in treble clef with a key signature of one sharp (F#). Measure 42 is a whole rest. Measure 43 contains a half note F#4. Measure 44 contains a half note G4.

45

41

A musical staff in treble clef with a key signature of one sharp (F#). Measure 45 contains a half note F#4. Measure 46 contains a half note G4. Measure 47 is a whole rest. Measure 48 is a whole rest. Measure 49 is a whole rest. Measure 50 is a whole rest. Measure 51 is a whole rest. Measure 52 is a whole rest. Measure 53 is a whole rest. Measure 54 is a whole rest. Measure 55 is a whole rest. Measure 56 is a whole rest. Measure 57 is a whole rest. Measure 58 is a whole rest. Measure 59 is a whole rest. Measure 60 is a whole rest.