

Beadochons - L`usine In The Sky

♩ = 120,000000

Organ

Bass

Vocals

7

Drums

Organ

Bass

Vocals

13

Drums

Organ

Bass

Vocals

19

Drums

Acc Guitar

Elec Guitar

Organ

Bass

Vocals

Detailed description: This musical score covers measures 19 through 24. The key signature is D major (two sharps). The drums play a consistent pattern of quarter notes with 'x' marks above them, indicating a specific drum sound. The acoustic guitar and electric guitar parts are mostly silent, with some chords and notes appearing in the final two measures. The organ plays a melodic line of quarter notes. The bass line consists of a steady eighth-note pattern. The vocal line features a melodic phrase with a long note in measure 20 and a final note in measure 24.

25

Drums

Acc Guitar

Elec Guitar

Bass

Vocals

Detailed description: This musical score covers measures 25 through 30. The key signature changes to D minor (two flats). The drums continue with the same pattern. The acoustic guitar part becomes more active, playing chords and notes throughout. The electric guitar part also becomes more active, with some melodic lines and chords. The bass line continues with a steady eighth-note pattern. The vocal line features a melodic phrase with a long note in measure 26 and a final note in measure 30.

31

Drums

Acc Guitar

Elec Guitar

Bass

Vocals

36 $\text{♩} = 89,999954$

Drums

Acc Guitar

Elec Guitar

Organ

Bass

Vocals

$\text{♩} = 89,999954$

39

Drums

Acc Guitar

Elec Guitar

Organ

Bass

Vocals

42

$\text{♩} = 120,000000$

Drums

Acc Guitar

Elec Guitar

Organ

Bass

Vocals

$\text{♩} = 120,000000$

46

Organ

Bass

Vocals

51

Drums

Organ

Bass

Vocals

56

Drums

Organ

Bass

Vocals

62

Drums

Acc Guitar

Elec Guitar

Organ

Bass

Vocals

68

Drums

Acc Guitar

Elec Guitar

Bass

Vocals

73 $\text{♩} = 89,999954$

Drums

Acc Guitar

Elec Guitar

Organ

Bass

Vocals $\text{♩} = 89,999954$

Detailed description: This system contains measures 73 through 76. The music is in 4/4 time with a key signature of one flat (Bb). The tempo is marked as quarter note = 89,999954. The drums feature a consistent pattern of eighth notes on the snare and bass drum, with cymbal accents. The acoustic guitar plays a steady accompaniment of chords. The electric guitar has a melodic line with some bends and a 7/7 time signature marking. The organ plays block chords. The bass line is a simple eighth-note pattern. The vocal line consists of a few notes in measure 73 and a series of chords in measure 74.

77

Drums

Acc Guitar

Elec Guitar

Organ

Bass

Vocals

Detailed description: This system contains measures 77 through 80. The music continues in 4/4 time with a key signature of one sharp (F#). The drums maintain the eighth-note pattern. The acoustic guitar continues with its accompaniment. The electric guitar has a more active melodic line. The organ plays block chords. The bass line continues with eighth notes. The vocal line features a series of chords in measure 77 and 78, followed by a melodic phrase in measure 79.

80

Drums

Acc Guitar

Elec Guitar

Organ

Bass

Vocals

83 $\text{♩} = 120,000000$

Organ

Bass

Vocals

89

Drums

Organ

Bass

Vocals

95

♩ = 120,000000

9

Drums

Drums staff with a drum set icon and rhythmic notation. The notation shows a sequence of eighth notes with 'x' marks above them, indicating a specific drum pattern.

Organ

Organ staff with musical notation in treble clef, key signature of two sharps (F# and C#). The melody consists of eighth and quarter notes.

Bass

Bass staff with musical notation in bass clef, key signature of two sharps. The bass line features quarter and eighth notes.

Vocals

Vocals staff with musical notation in treble clef, key signature of two sharps. The melody includes quarter notes and a long note with a slur.

♩ = 120,000000

101

Drums

Drums staff with rhythmic notation. The notation shows a sequence of eighth notes with 'x' marks above them, indicating a drum pattern.

Acc Guitar

Acc Guitar staff with musical notation in treble clef, key signature of two sharps. The notation shows chords and a melodic line.

Elec Guitar

Elec Guitar staff with musical notation in treble clef, key signature of two sharps. The notation shows a melodic line with slurs and accents.

Organ

Organ staff with musical notation in treble clef, key signature of two sharps. The staff contains rests, indicating the organ is silent during this section.

Bass

Bass staff with musical notation in bass clef, key signature of two sharps. The bass line features quarter and eighth notes.

Vocals

Vocals staff with musical notation in treble clef, key signature of two sharps. The melody includes quarter notes and a long note with a slur.

107

Drums

Acc Guitar

Elec Guitar

Bass

Vocals

112

♩ = 89,999954

Drums

Acc Guitar

Elec Guitar

Organ

Bass

Vocals

♩ = 89,999954

116 $\text{♩} = 89,999954$

Drums

Acc Guitar

Elec Guitar

Organ

Bass

Vocals $\text{♩} = 89,999954$

Detailed description: This block contains the musical notation for measures 116 and 117. It features six staves: Drums, Accoustic Guitar, Electric Guitar, Organ, Bass, and Vocals. The key signature has one sharp (F#). The tempo is marked as quarter note = 89,999954. The Drums staff shows a consistent rhythmic pattern with 'x' marks above the notes. The Accoustic Guitar and Electric Guitar staves play chords and single notes respectively. The Organ, Bass, and Vocals staves provide harmonic support and a vocal line.

118

Drums

Acc Guitar

Elec Guitar

Organ

Bass

Vocals

Detailed description: This block contains the musical notation for measures 118 and 119. It features the same six staves as the previous block. The key signature remains one sharp (F#). The Drums staff continues with its rhythmic pattern. The Accoustic Guitar and Electric Guitar staves play chords and single notes. The Organ, Bass, and Vocals staves provide harmonic support and a vocal line.

121

Drums

Acc Guitar

Elec Guitar

Organ

Bass

Vocals

Detailed description: This system of musical notation covers measures 121, 122, and 123. The Drums part features a consistent pattern of eighth notes on the snare and bass drums. The Accoustic Guitar part plays a steady accompaniment of chords. The Electric Guitar part has a melodic line with some bends. The Organ part provides harmonic support with block chords. The Bass part has a rhythmic line with some melodic movement. The Vocals part begins with a long note in measure 121 and continues with a melodic line in measure 123.

124

Drums

Acc Guitar

Elec Guitar

Organ

Bass

Vocals

Detailed description: This system of musical notation covers measures 124, 125, and 126. The Drums part continues with the same eighth-note pattern. The Accoustic Guitar part maintains its accompaniment. The Electric Guitar part has a more active melodic line. The Organ part has a more complex rhythmic pattern with some grace notes. The Bass part has a steady eighth-note line. The Vocals part has a melodic line with some rests.

127

Drums

Acc Guitar

Elec Guitar

Organ

Bass

Vocals

Detailed description: This block contains the musical notation for measures 127 through 130. It features six staves: Drums, Accoustic Guitar, Electric Guitar, Organ, Bass, and Vocals. The Drums staff shows a consistent pattern of eighth notes with 'x' marks above them, indicating a specific drumming technique. The Accoustic Guitar and Organ staves play chords, with the Organ using a tremolo effect. The Electric Guitar plays a melodic line with eighth notes and a final sustained note. The Bass line follows a similar eighth-note pattern. The Vocals staff has a melodic line in the first measure, followed by a rest and a sustained note in the final measure.

130

Drums

Acc Guitar

Elec Guitar

Organ

Bass

Vocals

Detailed description: This block contains the musical notation for measures 130 through 133. It features six staves: Drums, Accoustic Guitar, Electric Guitar, Organ, Bass, and Vocals. The Drums staff continues with the eighth-note pattern. The Accoustic Guitar and Organ staves play chords, with the Organ using a tremolo effect. The Electric Guitar plays a melodic line with eighth notes. The Bass line continues with eighth notes. The Vocals staff has a melodic line in the first measure, followed by a rest and a sustained note in the final measure.

133

Drums

Acc Guitar

Elec Guitar

Organ

Bass

Vocals

Detailed description: This block contains the musical notation for measures 133 through 135. It features six staves: Drums, Accoustic Guitar, Electric Guitar, Organ, Bass, and Vocals. The Drums staff shows a consistent pattern of eighth notes. The Accoustic Guitar and Electric Guitar parts consist of chords and single notes. The Organ part has block chords with some eighth-note patterns. The Bass part has a steady eighth-note line. The Vocals part has a few notes and rests.

136

Drums

Acc Guitar

Elec Guitar

Organ

Bass

Vocals

Detailed description: This block contains the musical notation for measures 136 through 138. It features six staves: Drums, Accoustic Guitar, Electric Guitar, Organ, Bass, and Vocals. The Drums staff continues with eighth notes. The Accoustic Guitar and Electric Guitar parts continue with their respective parts. The Organ part has block chords and some eighth-note patterns. The Bass part has a steady eighth-note line. The Vocals part has a few notes and rests.

138

Drums

Acc Guitar

Elec Guitar

Organ

Bass

Vocals

Beadochons - L'usine In The Sky

Drums

♩ = 120,000000

11

5

21

29

36

♩ = 89,999954

40

44

♩ = 120,000000

7

5

60

68

75

♩ = 89,999954

79

The drum score is written on ten staves. Each staff begins with a drum set icon. The notation includes various rhythmic patterns: 11 and 5 are marked with thick black bars; 21, 29, 60, and 68 feature continuous eighth-note patterns with 'x' marks above; 36, 40, 75, and 79 feature continuous eighth-note patterns with 'x' marks above; 44 and 79 feature eighth-note patterns with 'x' marks above. Time signatures include 3/4, 4/4, and 3/4. The piece concludes with 'V.S.'.

V.S.

2

Drums

83 ♩ = 120,000000

7 5

98 ♩ = 120,000000

102

108

114 ♩ = 89,999954

♩ = 89,999954

117

121

125

129

133

♩ = 120,000000
23

29

36 ♩ = 89,999954

40

44 ♩ = 120,000000
19

68

74 ♩ = 89,999954

79

83 ♩ = 120,000000 15 ♩ = 120,000000 4

102

108

114 ♪ = 89,999954 ♪ = 89,999954

117

121

126

131

135

Organ

Beadochons - L`usine In The Sky

♩ = 120,000000

8

16

24 **12** ♩ = 89,999954

40 ♩ = 120,000000

47

55

60 **12**

75 ♩ = 89,999954

76

82

$\text{♩} = 120,000000$

89

96

$\text{♩} = 120,000000$

102

12

$\text{♩} = 89,999954$

$\text{♩} = 89,999954$

117

123

128

134

Beadochons - L`usine In The Sky

Bass

♩ = 120,000000



13



22



29



36 ♩ = 89,999954



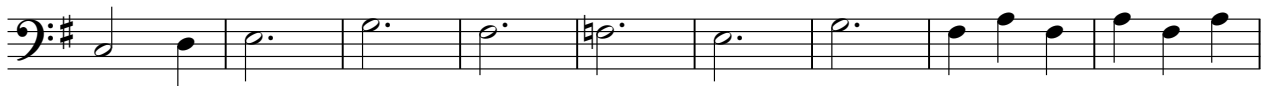
40



43 ♩ = 120,000000



52



61



68



V.S.

2

Bass

75 ♩ = 89,999954



79



82

♩ = 120,000000



89



98 ♩ = 120,000000



102



108



114 ♩ = 89,999954

♩ = 89,999954



117



120



124



128



132



136



Vocals

Beadochons - L`usine In The Sky

♩ = 120,000000

4

11

17

24

31

♩ = 89,999954

37

42

♩ = 120,000000

49

56

63

69

75 ♩ = 89,999954

79

83 ♩ = 120,000000

90

98 ♩ = 120,000000

106

112 ♩ = 89,999954 ♩ = 89,999954

117

