

# Bill Monroe - Down Yonder

♩ = 249,003983

STEEL GTR

BANJO

ACOU BASS

FIDDLE

This system contains the first four staves of the musical score. The tempo is marked as ♩ = 249,003983. The instruments are STEEL GTR, BANJO, ACOU BASS, and FIDDLE. The key signature has one sharp (F#) and the time signature is 4/4. The first three measures of all instruments are whole rests. In the fourth measure, the STEEL GTR and FIDDLE play a chord of F#4 and G4. The BANJO plays a sequence of notes: 0, 7, 7, 0, 0, 1, 0, 5, 0, 5, 0, 0. The ACOU BASS plays a whole note F#4.

5

STEEL GTR

BANJO

ACOU BASS

FIDDLE

This system contains the next four staves of the musical score, starting at measure 5. The tempo remains ♩ = 249,003983. The instruments are STEEL GTR, BANJO, ACOU BASS, and FIDDLE. The key signature has one sharp (F#) and the time signature is 4/4. In measure 5, the STEEL GTR and FIDDLE play a chord of F#4 and G4. The BANJO plays a sequence of notes: 2, 2, 0, 4, 0, 2, 2, 4, 0, 4, 4, 2, 0, 5, 0, 4, 3. The ACOU BASS plays a whole note F#4. This pattern repeats for measures 6, 7, 8, and 9.

8

STEEL GTR

BANJO

ACOU BASS

11

STEEL GTR

BANJO

ACOU BASS

FIDDLE

14

STEEL GTR

BANJO

ACOU BASS

FIDDLE

17

STEEL GTR

BANJO

ACOU BASS

FIDDLE

20

STEEL GTR

BANJO

ACOU BASS

FIDDLE

23

STEEL GTR

BANJO

ACOU BASS

FIDDLE

26

STEEL GTR

BANJO

ACOU BASS

FIDDLE

29

STEEL GTR

BANJO

ACOU BASS

FIDDLE

32

STEEL GTR

BANJO

ACOU BASS

FIDDLE

35

STEEL GTR

BANJO

ACOU BASS

FIDDLE

38

STEEL GTR

BANJO

ACOU BASS

FIDDLE

41

STEEL GTR

BANJO

ACOU BASS

FIDDLE



56

STEEL GTR

BANJO

ACOU BASS

FIDDLE

60

STEEL GTR

BANJO

ACOU BASS

FIDDLE

64

STEEL GTR

BANJO

ACOU BASS

FIDDLE

68

STEEL GTR

BANJO

ACOU BASS

FIDDLE

72

STEEL GTR

BANJO

ACOU BASS

FIDDLE

76

STEEL GTR

BANJO

ACOU BASS

FIDDLE





87

STEEL GTR

STEEL GTR

BANJO

ACOU BASS

FIDDLE

90

STEEL GTR

STEEL GTR

BANJO

ACOU BASS

FIDDLE

93

STEEL GTR

STEEL GTR

BANJO

ACOU BASS

FIDDLE

96

STEEL GTR

STEEL GTR

BANJO

ACOU BASS

FIDDLE

99

STEEL GTR

STEEL GTR

BANJO

ACOU BASS

FIDDLE

102

STEEL GTR

STEEL GTR

BANJO

ACOU BASS

FIDDLE

105

STEEL GTR

STEEL GTR

BANJO

ACOU BASS

FIDDLE

108

STEEL GTR

STEEL GTR

BANJO

ACOU BASS

FIDDLE

111

STEEL GTR

STEEL GTR

BANJO

ACOU BASS

FIDDLE

114

STEEL GTR

STEEL GTR

BANJO

ACOU BASS

FIDDLE

117

STEEL GTR

STEEL GTR

BANJO

ACOU BASS

FIDDLE

120

STEEL GTR

STEEL GTR

BANJO

ACOU BASS

FIDDLE

123

STEEL GTR

STEEL GTR

BANJO

ACOU BASS

FIDDLE

126

STEEL GTR

BANJO

ACOU BASS

FIDDLE



129

STEEL GTR

BANJO

ACOU BASS

FIDDLE

132

STEEL GTR

BANJO

ACOU BASS

FIDDLE

135

STEEL GTR

BANJO

ACOU BASS

FIDDLE

138

STEEL GTR

BANJO

ACOU BASS

FIDDLE

141

STEEL GTR

BANJO

ACOU BASS

FIDDLE

144

STEEL GTR

BANJO

ACOU BASS

FIDDLE

147

STEEL GTR

BANJO

ACOU BASS

150

STEEL GTR

BANJO

ACOU BASS

FIDDLE

153

STEEL GTR

BANJO

ACOU BASS

FIDDLE

156

STEEL GTR

BANJO

ACOU BASS

FIDDLE

159

STEEL GTR

BANJO

ACOU BASS

FIDDLE

162

STEEL GTR

BANJO

ACOU BASS

FIDDLE

165

STEEL GTR

BANJO

ACOU BASS

FIDDLE

STEEL GTR

Bill Monroe - Down Yonder

♩ = 249,003983

82

86

90

94

98

102

105

109

113

117

V.S.



STEEL GTR

Bill Monroe - Down Yonder

♩ = 249,003983

3

9

15

21

27

33

39

45

51

57

V.S.



63

69

75

81

87

93

99

104

110

116



# Bill Monroe - Down Yonder

BANJO

♩ = 249,003983

2

6

10

14

18

22

26

30

34

38

V.S.

BANJO

42

Musical notation for measure 42, featuring a five-line staff with a treble clef and a 4/4 time signature. The notation includes a sequence of notes and rests, with a '5' above the first note and a '2' above the second. Below the staff, there are two lines of fret numbers: '4' and '7' for the first two notes, and '0' for the rest. The rest of the measure consists of eighth notes with fret numbers '4' and '7' alternating, with question marks below each note.

47

Musical notation for measure 47, featuring a five-line staff with a treble clef and a 4/4 time signature. The notation includes a sequence of notes and rests, with a '0' above the first note. Below the staff, there are two lines of fret numbers: '4' and '7' for the first two notes, and '0' for the rest. The rest of the measure consists of eighth notes with fret numbers '0' and '4' alternating, with question marks below each note.

52

Musical notation for measure 52, featuring a five-line staff with a treble clef and a 4/4 time signature. The notation includes a sequence of notes and rests, with a '0' above the first note. Below the staff, there are two lines of fret numbers: '4' and '7' for the first two notes, and '4' for the rest. The rest of the measure consists of eighth notes with fret numbers '4' and '7' alternating, with question marks below each note.

58

Musical notation for measure 58, featuring a five-line staff with a treble clef and a 4/4 time signature. The notation includes a sequence of notes and rests, with a '0' above the first note. Below the staff, there are two lines of fret numbers: '4' and '7' for the first two notes, and '1', '2', and '4' for the rest. The rest of the measure consists of eighth notes with fret numbers '1', '2', and '4' alternating, with question marks below each note.

63

Musical notation for measure 63, featuring a five-line staff with a treble clef and a 4/4 time signature. The notation includes a sequence of notes and rests, with a '0' above the first note. Below the staff, there are two lines of fret numbers: '1', '2', and '4' for the first two notes, and '2' for the rest. The rest of the measure consists of eighth notes with fret numbers '2' and '0' alternating, with question marks below each note.

68

Musical notation for measure 68, featuring a five-line staff with a treble clef and a 4/4 time signature. The notation includes a sequence of notes and rests, with a '0' above the first note. Below the staff, there are two lines of fret numbers: '4' and '7' for the first two notes, and '4' for the rest. The rest of the measure consists of eighth notes with fret numbers '4' and '0' alternating, with question marks below each note.

74

Musical notation for measure 74, featuring a five-line staff with a treble clef and a 4/4 time signature. The notation includes a sequence of notes and rests, with a '0' above the first note. Below the staff, there are two lines of fret numbers: '0' and '4' for the first two notes, and '4' for the rest. The rest of the measure consists of eighth notes with fret numbers '4' and '7' alternating, with question marks below each note.

79

Musical notation for measure 79, featuring a five-line staff with a treble clef and a 4/4 time signature. The notation includes a sequence of notes and rests, with a '0' above the first note. Below the staff, there are two lines of fret numbers: '4' and '7' for the first two notes, and '1', '2', and '4' for the rest. The rest of the measure consists of eighth notes with fret numbers '1', '2', and '4' alternating, with question marks below each note.

85

Musical notation for measure 85, featuring a five-line staff with a treble clef and a 4/4 time signature. The notation includes a sequence of notes and rests, with a '0' above the first note. Below the staff, there are two lines of fret numbers: '4' and '7' for the first two notes, and '4' for the rest. The rest of the measure consists of eighth notes with fret numbers '4' and '0' alternating, with question marks below each note.

91

Musical notation for measure 91, featuring a five-line staff with a treble clef and a 4/4 time signature. The notation includes a sequence of notes and rests, with a '0' above the first note. Below the staff, there are two lines of fret numbers: '0' and '4' for the first two notes, and '4' for the rest. The rest of the measure consists of eighth notes with fret numbers '4' and '7' alternating, with question marks below each note.

96

Musical notation for measure 96, featuring a five-line staff with rhythmic patterns and fret numbers (4, 7, 0, 1, 2) and question marks.

102

Musical notation for measure 102, featuring a five-line staff with rhythmic patterns and fret numbers (1, 2, 0, 2, 4).

107

Musical notation for measure 107, featuring a five-line staff with rhythmic patterns and fret numbers (0, 2, 4, 7) and question marks.

112

Musical notation for measure 112, featuring a five-line staff with rhythmic patterns and fret numbers (0, 4, 7) and question marks.

118

Musical notation for measure 118, featuring a five-line staff with rhythmic patterns and fret numbers (4, 7, 0, 1, 2, 4) and question marks.

123

Musical notation for measure 123, featuring a five-line staff with rhythmic patterns and fret numbers (0, 1, 5, 7).

127

Musical notation for measure 127, featuring a five-line staff with rhythmic patterns and fret numbers (5, 0, 4, 3, 2, 5, 0, 2, 5, 0, 0, 0, 5, 2, 0, 5, 2, 5, 2, 5, 0, 0, 0).

131

Musical notation for measure 131, featuring a five-line staff with rhythmic patterns and fret numbers (0, 5, 0, 2, 4, 4, 0, 2, 2, 0, 4, 0, 2, 2, 0, 4, 4, 4, 0, 2, 4).

135

Musical notation for measure 135, featuring a five-line staff with rhythmic patterns and fret numbers (0, 5, 0, 2, 4, 0, 2, 4, 0, 2, 4, 0, 2, 4, 0, 2, 4, 0, 2, 4, 0, 2, 4, 0, 4, 0, 4).

139

Musical notation for measure 139, featuring a five-line staff with rhythmic patterns and fret numbers (0, 5, 1, 2, 0, 1, 5, 2, 0, 2, 2, 2, 2, 5, 1, 2, 5, 2, 1).

V.S.

BANJO

143

Musical notation for measure 143, featuring a five-line staff with various notes and fingerings (0, 2, 4, 5) and a bass line with notes and fingerings (2, 4, 6, 7).

147

Musical notation for measure 147, featuring a five-line staff with various notes and fingerings (0, 2, 4, 5) and a bass line with notes and fingerings (2, 4, 6, 7).

151

Musical notation for measure 151, featuring a five-line staff with various notes and fingerings (0, 2, 3, 4, 5) and a bass line with notes and fingerings (2, 4, 6, 7).

155

Musical notation for measure 155, featuring a five-line staff with various notes and fingerings (0, 2, 4, 5) and a bass line with notes and fingerings (2, 4, 6, 7).

159

Musical notation for measure 159, featuring a five-line staff with various notes and fingerings (0, 1, 2, 4, 5, 7) and a bass line with notes and fingerings (2, 4, 6, 7).

163

Musical notation for measure 163, featuring a five-line staff with various notes and fingerings (0, 2, 4, 5) and a bass line with notes and fingerings (2, 4, 6, 7).

ACOU BASS

Bill Monroe - Down Yonder

♩ = 249,003983

**3**



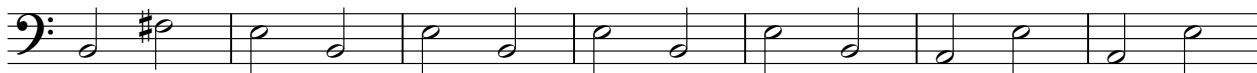
9



16



23



30



37



43



50



57



64



V.S.

71



78



85



92



99



106



113



120



127



134





141



148



155



161



FIDDLE

Bill Monroe - Down Yonder

♩ = 249,003983

2

7

11

15

19

23

27

31

35

39

V.S.



89



FIDDLE

163

