

# Bluegrass - Bugle call rag

0.0"  
1.1,00  
Bugle Call Rag

♩ = 154,000153

Guitar

Banjo

Bass

Guitar

Banjo

Bass

Guitar

Banjo

Bass

Guitar

Banjo

Bass

22

Guitar

Banjo

Bass

28

Guitar

Banjo

Bass

33

Guitar

Banjo

Bass

38

Guitar

Banjo

Bass

43

Guitar

Banjo

Bass

48

Guitar

Banjo

Bass

53

Guitar

Banjo

Bass

58

Guitar

Banjo

Bass



83

Guitar

Banjo

Bass

88

Guitar

Banjo

Bass

93

Guitar

Banjo

Bass

98

Guitar

Banjo

Bass

103

Guitar

Banjo

Bass

108

Guitar

Banjo

Bass

113

Guitar

Banjo

Bass

118

Guitar

Banjo

Bass

123

Guitar

Banjo

Bass

128

Guitar

Banjo

Bass

133

Guitar

Banjo

Bass

138

Guitar

Banjo

Bass

143

Guitar

Banjo

Bass

149

Guitar

Banjo

Bass

154

Guitar

Banjo

Bass

159

Guitar

Banjo

Bass



164

Guitar

Banjo

Bass

173

Guitar

185

Guitar

197

Guitar

209

Guitar

221

Guitar

233

Guitar

245


Guitar

257

Guitar


10

Guitar 269



A musical staff for guitar starting at measure 269. The staff contains 12 measures, each with a single horizontal line (rest) on the first line of the treble clef.

Guitar 281




A musical staff for guitar starting at measure 281. The staff contains 12 measures, each with a single horizontal line (rest) on the first line of the treble clef.

Guitar 293




A musical staff for guitar starting at measure 293. The staff contains 12 measures, each with a single horizontal line (rest) on the first line of the treble clef.

Guitar 305



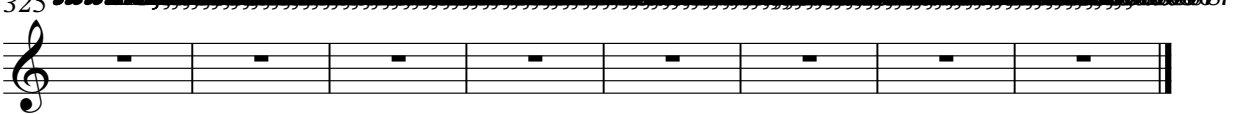
A musical staff for guitar starting at measure 305. The staff contains 12 measures, each with a single horizontal line (rest) on the first line of the treble clef.

Guitar 317



A musical staff for guitar starting at measure 317. The staff contains 12 measures, each with a single horizontal line (rest) on the first line of the treble clef. At the end of the staff, there is a dense, black scribble.

Guitar 325



A musical staff for guitar starting at measure 325. The staff contains 12 measures, each with a single horizontal line (rest) on the first line of the treble clef. At the end of the staff, there is a dense, black scribble.

# Bluegrass - Bugle call rag

Guitar

♩ = 154,000153

5

10

16

22

4

31

37

4

46

52

57

4

66



72



78



87



93



99



108



114



120



129



135

141

150

156

162

323

# Bluegrass - Bugle call rag

Banjo

♩ = 154,000153

Measures 1-7 of the Banjo tablature for 'Bugle call rag'. The piece is in 2/4 time. The notation shows a sequence of notes with fret numbers (0, 3, 5, 7, 8) and a 7-measure rest in the first measure.

8

Measures 8-13 of the Banjo tablature. The notation continues with various fret numbers and rhythmic patterns.

14

Measures 14-19 of the Banjo tablature. The notation continues with various fret numbers and rhythmic patterns.

20

Measures 20-26 of the Banjo tablature. The notation continues with various fret numbers and rhythmic patterns.

27

Measures 27-32 of the Banjo tablature. The notation continues with various fret numbers and rhythmic patterns.

33

Measures 33-38 of the Banjo tablature. The notation continues with various fret numbers and rhythmic patterns.

39

Measures 39-45 of the Banjo tablature. The notation continues with various fret numbers and rhythmic patterns.

46

Measures 46-51 of the Banjo tablature. The notation continues with various fret numbers and rhythmic patterns.

52

Measures 52-58 of the Banjo tablature. The notation continues with various fret numbers and rhythmic patterns.

59

Measures 59-64 of the Banjo tablature. The notation continues with various fret numbers and rhythmic patterns.

V.S.



129

Musical notation for measure 129, featuring a five-line staff with various fret numbers (0, 2, 3, 4, 5) and rhythmic markings.

135

Musical notation for measure 135, featuring a five-line staff with various fret numbers (0, 2, 3, 4, 5) and rhythmic markings.

141

Musical notation for measure 141, featuring a five-line staff with various fret numbers (0, 3, 5, 6, 7, 8) and rhythmic markings.

148

Musical notation for measure 148, featuring a five-line staff with various fret numbers (0, 2, 3, 5, 6, 7) and rhythmic markings.

154

Musical notation for measure 154, featuring a five-line staff with various fret numbers (0, 2, 3, 5, 6) and rhythmic markings.

160

Musical notation for measure 160, featuring a five-line staff with various fret numbers (0, 2, 3, 4, 5, 7) and rhythmic markings, including a triplet.

167

Musical notation for measure 167, featuring a five-line staff with a triplet marking and a large blacked-out section.

155

325

Musical notation for measure 325, featuring a five-line staff with a large blacked-out section.





105



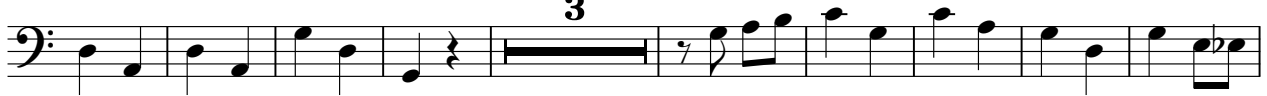
115



127



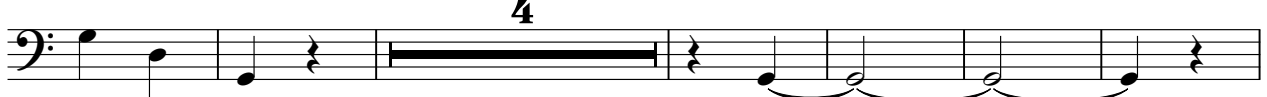
138



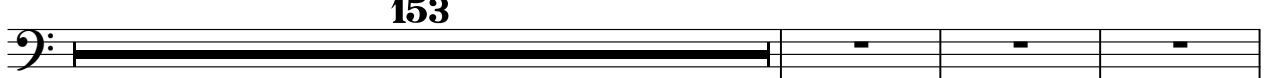
150



160



170



326

