

Bob Marley - 3birds

♩ = 162,000168

drums

bass

organ

♩ = 162,000168

5

drums

bass

organ

8

drums

bass

organ

The image displays a musical score for the song '3birds' by Bob Marley. It is arranged in three systems, each containing three staves: drums, bass, and organ. The music is in 4/4 time and features a tempo of 162,000168. The first system shows the initial measures, with the organ starting a melodic line in the third measure. The second system begins at measure 5, where the drums introduce a new rhythmic pattern. The third system starts at measure 8, featuring a triplet in the organ part. The notation includes various rhythmic values, rests, and articulation marks such as accents and slurs.

11

drums

bass

organ

14

drums

bass

organ

18

drums

bass

organ

21

drums

bass

organ

25

drums

bass

organ

28

drums

bass

32

drums

bass

35

drums

bass

38

drums

bass

42

drums

bass

organ

This system covers measures 42, 43, and 44. The drums part features a consistent pattern of eighth notes on the snare and cymbal, with occasional tom fills. The bass line consists of eighth notes and quarter notes, often with a triplet feel. The organ part provides harmonic support with chords and moving lines in the right hand.

45

drums

bass

organ

This system covers measures 45, 46, 47, and 48. The drum pattern continues with snare and cymbal eighth notes. The bass line maintains its rhythmic flow with eighth and quarter notes. The organ part continues with its characteristic harmonic accompaniment.

49

drums

bass

organ

This system covers measures 49, 50, and 51. The drum part shows some variation in the snare and cymbal patterns. The bass line continues with its eighth-note driven rhythm. The organ part provides a steady harmonic accompaniment.

52

drums

bass

organ

This system covers measures 52, 53, and 54. The drum pattern remains consistent with the previous systems. The bass line continues with its eighth-note driven rhythm. The organ part provides a steady harmonic accompaniment.

55

drums

bass

organ

59

drums

bass

63

drums

bass

66

drums

bass

69

drums

bass

72

drums

bass

organ

76

drums

bass

organ

79

drums

bass

organ

83

drums

bass

organ

86

drums

bass

organ

This system covers measures 86, 87, and 88. The drums part features a consistent pattern of eighth notes on the snare and cymbal, with occasional tom fills. The bass line consists of quarter and eighth notes, often with rests. The organ part plays a melodic line with eighth notes and rests, including a prominent slur over measures 87 and 88.

89

drums

bass

organ

This system covers measures 89, 90, and 91. The drums part continues with a steady eighth-note pattern. The bass line features a mix of quarter and eighth notes with rests. The organ part maintains its melodic eighth-note pattern, with some notes beamed together.

92

drums

bass

organ

This system covers measures 92, 93, and 94. The drums part shows a variation with some dotted rhythms. The bass line continues with quarter and eighth notes. The organ part has a more active melodic line with frequent eighth notes.

95

drums

bass

organ

This system covers measures 95, 96, and 97. The drums part features a consistent eighth-note pattern. The bass line includes quarter and eighth notes with rests. The organ part continues with its melodic eighth-note line, ending with a final chord in measure 97.

99

drums

bass

organ

102

drums

bass

organ

105

drums

bass

organ

108

drums

bass

111

drums

bass

This system contains measures 111, 112, and 113. The drums part features a consistent pattern of quarter notes on the snare and bass drums, with occasional cymbal hits. The bass part consists of eighth-note patterns, often with rests, creating a steady rhythmic accompaniment.

114

drums

bass

This system contains measures 114, 115, and 116. The drum pattern continues with similar snare and bass drum placements. The bass line shows some variation with a few chords and eighth-note runs.

117

drums

bass

This system contains measures 117, 118, and 119. The drums maintain their rhythmic role. The bass part includes some sixteenth-note patterns and rests.

120

drums

bass

organ

This system contains measures 120, 121, 122, and 123. The drums and bass continue their patterns. The organ part enters in measure 120, playing a simple harmonic accompaniment with quarter notes and rests.

124

drums

bass

organ

This system contains measures 124, 125, and 126. The drums and bass parts are consistent with the previous systems. The organ part continues its accompaniment, featuring some eighth-note patterns.

127

drums

bass

organ

Detailed description: This system covers measures 127 to 129. The drums part features a consistent pattern of eighth notes on the snare and bass drums, with occasional cymbal accents. The bass line consists of eighth notes and quarter notes, primarily in the lower register. The organ part is written in a treble clef and features a melodic line with some grace notes and rests.

130

drums

bass

organ

Detailed description: This system covers measures 130 to 132. The drum pattern continues with snare and bass drum eighth notes. The bass line shows some syncopation with eighth notes and quarter notes. The organ part continues its melodic development with eighth and quarter notes.

133

drums

bass

organ

Detailed description: This system covers measures 133 to 136. The drum pattern remains consistent. The bass line features a mix of eighth and quarter notes. The organ part has a more active melodic line with eighth notes and some grace notes.

137

drums

bass

organ

Detailed description: This system covers measures 137 to 140. The drum pattern continues. The bass line has some rests and eighth notes. The organ part features a melodic line with eighth notes and quarter notes.

140

drums

bass

organ

143

drums

bass

organ

147

drums

bass

organ

150

drums

bass

organ

154

drums

bass

organ

This system contains measures 154, 155, and 156. The drums part features a consistent pattern of eighth notes on the snare and bass drums. The bass line consists of quarter and eighth notes, with a prominent triplet of eighth notes in measure 156. The organ part plays a melodic line with eighth and quarter notes, also featuring a triplet in measure 156.

157

drums

bass

organ

This system contains measures 157, 158, and 159. The drums part continues with the established pattern. The bass line features a melodic sequence of quarter and eighth notes. The organ part continues its melodic line with eighth and quarter notes.

160

drums

bass

organ

This system contains measures 160, 161, and 162. The drums part maintains the pattern. The bass line includes a triplet of eighth notes in measure 161. The organ part continues with its melodic line, ending with a double bar line in measure 162.

51

56

61

66

71

75

80

85

90

95

100

105

110

115

120

125

130

135

140

145

V.S.

4

drums

150

Musical notation for drums, starting at measure 150. The notation is on a single staff with a double bar line at the beginning. It features a series of 'x' marks above the staff, indicating drum hits. The rhythm consists of a steady pattern of eighth notes, with some measures containing beamed eighth notes. The notation is written in a standard drum notation style.

155

Musical notation for drums, starting at measure 155. The notation is on a single staff with a double bar line at the beginning. It features a series of 'x' marks above the staff, indicating drum hits. The rhythm consists of a steady pattern of eighth notes, with some measures containing beamed eighth notes. The notation is written in a standard drum notation style.

159

Musical notation for drums, starting at measure 159. The notation is on a single staff with a double bar line at the beginning. It features a series of 'x' marks above the staff, indicating drum hits. The rhythm consists of a steady pattern of eighth notes, with some measures containing beamed eighth notes. The notation is written in a standard drum notation style. A triplet of eighth notes is indicated by a '3' below the staff at the end of the measure.

Bob Marley - 3birds

bass

♩ = 162,000168

2

7

12

17

22

27

31

35

39

44

V.S.

49



54



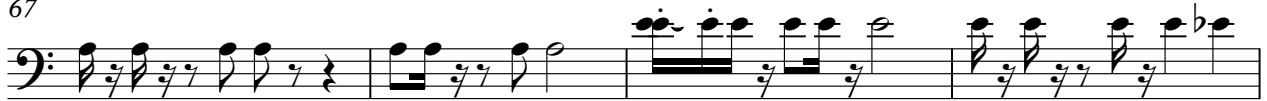
59



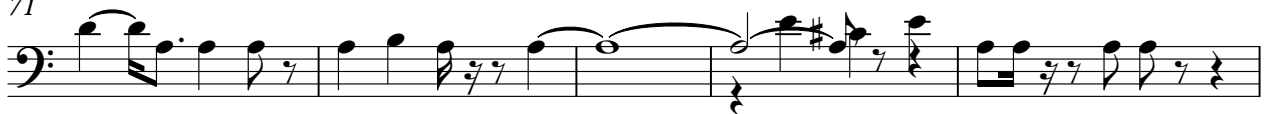
63



67



71



76



81



86



91



4

bass

143

Musical notation for bass line starting at measure 143. The notation is on a single bass clef staff. It begins with a quarter note G2, followed by a quarter rest, then a quarter note G2, and a quarter note F2. The second measure contains a quarter rest, a quarter note G2, a quarter note F2, and a quarter note E2. The third measure contains a quarter note D2, a quarter note C2, a quarter note B1, and a quarter note A1. The fourth measure contains a quarter note G2, a quarter note F2, a quarter note E2, and a quarter note D2. The fifth measure contains a quarter note C2, a quarter note B1, a quarter note A1, and a quarter note G2.

148

Musical notation for bass line starting at measure 148. The notation is on a single bass clef staff. It begins with a quarter note G2, a quarter note F2, a quarter note E2, and a quarter note D2. The second measure contains a quarter note C2, a quarter note B1, a quarter note A1, and a quarter note G2. The third measure contains a quarter note F2, a quarter note E2, a quarter note D2, and a quarter note C2. The fourth measure contains a quarter note B1, a quarter note A1, a quarter note G2, and a quarter note F2. The fifth measure contains a quarter note E2, a quarter note D2, a quarter note C2, and a quarter note B1.

153

Musical notation for bass line starting at measure 153. The notation is on a single bass clef staff. It begins with a quarter note G2, a quarter note F2, a quarter note E2, and a quarter note D2. The second measure contains a quarter note C2, a quarter note B1, a quarter note A1, and a quarter note G2. The third measure contains a quarter note F2, a quarter note E2, a quarter note D2, and a quarter note C2. The fourth measure contains a quarter note B1, a quarter note A1, a quarter note G2, and a quarter note F2. The fifth measure contains a quarter note E2, a quarter note D2, a quarter note C2, and a quarter note B1.

158

Musical notation for bass line starting at measure 158. The notation is on a single bass clef staff. It begins with a quarter note G2, a quarter note F2, a quarter note E2, and a quarter note D2. The second measure contains a quarter note C2, a quarter note B1, a quarter note A1, and a quarter note G2. The third measure contains a quarter note F2, a quarter note E2, a quarter note D2, and a quarter note C2. The fourth measure contains a quarter note B1, a quarter note A1, a quarter note G2, and a quarter note F2. The fifth measure contains a quarter note E2, a quarter note D2, a quarter note C2, and a quarter note B1.

Bob Marley - 3birds

organ

♩ = 162,000168

2

7

11

16

20

25

16

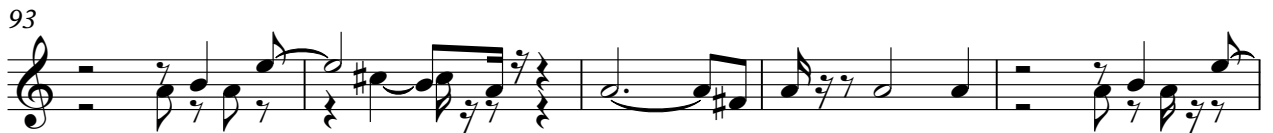
44

49

53

57

16



136



140



145



149



154



158



161

