

Bob Seger - Still the Same

$\text{♩} = 125,000000$

Drums $\frac{4}{4}$

Bass $\frac{4}{4}$

This system shows the first three measures of the piece. The tempo is marked as 125,000,000. The drums play a consistent pattern of eighth notes with a snare drum on the second and fourth beats. The bass line consists of quarter notes: G2, A2, B2, C3, D3, E3, F3, G3.

4

Drums $\frac{4}{4}$

Bass $\frac{4}{4}$

This system shows measures 4-6. The drums continue their pattern. The bass line continues with quarter notes: A2, B2, C3, D3, E3, F3, G3, A3.

6

Drums $\frac{4}{4}$

Bass $\frac{4}{4}$

This system shows measures 7-9. The drums continue their pattern. The bass line continues with quarter notes: B2, C3, D3, E3, F3, G3, A3, B3.

8

Drums $\frac{4}{4}$

Bass $\frac{4}{4}$

This system shows measures 10-12. The drums continue their pattern. The bass line continues with quarter notes: C3, D3, E3, F3, G3, A3, B3, C4. A triplet of eighth notes (G3, A3, B3) is marked with a '3' below it.

10

Drums $\frac{4}{4}$

Bass $\frac{4}{4}$

This system shows measures 13-15. The drums continue their pattern. The bass line continues with quarter notes: D3, E3, F3, G3, A3, B3, C4. A triplet of eighth notes (G3, A3, B3) is marked with a '3' below it.

2

12

Drums

Bass

Drum notation for measures 12-15: A consistent pattern of eighth notes on the snare and bass drums, with a hi-hat pattern of eighth notes. A double bar line with a repeat sign is at the end of measure 15.

Bass notation for measures 12-15: A sequence of eighth and quarter notes in the bass clef.

14

Drums

Bass

Drum notation for measures 14-17: Continuation of the drum pattern from the previous system.

Bass notation for measures 14-17: Continuation of the bass line, featuring a triplet of eighth notes in measure 17.

16

Drums

Bass

Drum notation for measures 16-19: Continuation of the drum pattern.

Bass notation for measures 16-19: Continuation of the bass line.

18

Drums

Bass

Drum notation for measures 18-21: Continuation of the drum pattern.

Bass notation for measures 18-21: Continuation of the bass line, including a triplet of eighth notes in measure 18.

20

Drums

Bass

Drum notation for measures 20-23: Continuation of the drum pattern.

Bass notation for measures 20-23: Continuation of the bass line, including a triplet of eighth notes in measure 20.

22

Drums

Bass

Drum notation for measures 22-25: Continuation of the drum pattern.

Bass notation for measures 22-25: Continuation of the bass line, including a triplet of eighth notes in measure 22.

24

Drums

Bass

3

26

Drums

Bass

28

Drums

Bass

3

30

Drums

Bass

32

Drums

Bass

3

34

Drums

Bass

36

Drums

Bass

38

Drums

Bass

40

Drums

Bass

42

Drums

Bass

44

Drums

Bass

46

Drums

Bass

48 5

Drums

Bass

Measures 48-51: Drum part features a consistent pattern of eighth notes on the snare and bass drums. Bass part starts with a triplet of eighth notes (G2, F2, E2) followed by quarter notes (D2, C2, B1, A1, G1).

50

Drums

Bass

Measures 50-53: Drum part continues with the same eighth-note pattern. Bass part continues with quarter notes (F1, E1, D1, C1, B0).

52

Drums

Bass

Measures 52-55: Drum part continues with the same eighth-note pattern. Bass part continues with quarter notes (A0, G0, F0, E0, D0).

54

Drums

Bass

Measures 54-57: Drum part continues with the same eighth-note pattern. Bass part features a triplet of eighth notes (C2, B1, A1) followed by quarter notes (G1, F1, E1, D1, C1).

56

Drums

Bass

Measures 56-59: Drum part continues with the same eighth-note pattern. Bass part continues with quarter notes (B0, A0, G0, F0, E0).

58

Drums

Bass

Measures 58-61: Drum part continues with the same eighth-note pattern. Bass part continues with quarter notes (D1, C1, B0, A0, G0).

6

60

Drums

Bass

Detailed description: This system covers measures 60 and 61. The drum part features a consistent pattern of eighth notes on the snare and bass drums, with a hi-hat pattern of eighth notes. The bass line consists of quarter notes in measure 60 and quarter notes with eighth rests in measure 61.

62

Drums

Bass

Detailed description: This system covers measures 62 and 63. The drum part continues with the same eighth-note pattern. The bass line features quarter notes in measure 62 and quarter notes with eighth rests in measure 63.

64

Drums

Bass

Detailed description: This system covers measures 64 and 65. The drum part remains consistent. The bass line has quarter notes in measure 64 and quarter notes with eighth rests in measure 65.

66

Drums

Bass

Detailed description: This system covers measures 66 and 67. The drum part is consistent. The bass line has quarter notes in measure 66 and quarter notes with eighth rests in measure 67.

68

Drums

Bass

Detailed description: This system covers measures 68 and 69. The drum part is consistent. The bass line has quarter notes in measure 68 and quarter notes with eighth rests in measure 69.

70

Drums

Bass

Detailed description: This system covers measures 70 and 71. The drum part is consistent. The bass line features quarter notes in measure 70 and quarter notes with eighth rests in measure 71.

72 7

Drums

Bass

74

Drums

Bass

76

Drums

Bass

78

Drums

Bass

80

Drums

Bass

82

Drums

Bass

84

Drums

Bass

Drum notation for measures 84-85: A continuous pattern of eighth notes on the snare and bass drums, with a double bar line and repeat sign at the end of measure 85. Bass notation for measures 84-85: A melodic line in bass clef with a key signature of two sharps (F# and C#). Measure 84 starts with a quarter rest, followed by quarter notes G2, A2, B2, C3, D3, E3, F#3, G3, A3, B3, C4, D4, E4, F#4, G4, A4, B4, C5. Measure 85 continues with quarter notes D4, E4, F#4, G4, A4, B4, C5, D5, E5, F#5, G5, A5, B5, C6, D6, E6, F#6, G6, A6, B6, C7.

86

Drums

Bass

Drum notation for measures 86-87: Similar to the previous system, with a continuous pattern of eighth notes on the snare and bass drums, ending with a double bar line and repeat sign. Bass notation for measures 86-87: A melodic line in bass clef. Measure 86 starts with a quarter note G2, followed by quarter notes A2, B2, C3, D3, E3, F#3, G3, A3, B3, C4, D4, E4, F#4, G4, A4, B4, C5. Measure 87 continues with quarter notes D4, E4, F#4, G4, A4, B4, C5, D5, E5, F#5, G5, A5, B5, C6, D6, E6, F#6, G6, A6, B6, C7.

88

Drums

Bass

Drum notation for measures 88-89: Similar to the previous system, with a continuous pattern of eighth notes on the snare and bass drums, ending with a double bar line and repeat sign. Bass notation for measures 88-89: A melodic line in bass clef. Measure 88 starts with a quarter note G2, followed by quarter notes A2, B2, C3, D3, E3, F#3, G3, A3, B3, C4, D4, E4, F#4, G4, A4, B4, C5. Measure 89 continues with quarter notes D4, E4, F#4, G4, A4, B4, C5, D5, E5, F#5, G5, A5, B5, C6, D6, E6, F#6, G6, A6, B6, C7.

90

Drums

Bass

Drum notation for measures 90-91: Similar to the previous system, with a continuous pattern of eighth notes on the snare and bass drums, ending with a double bar line and repeat sign. Bass notation for measures 90-91: A melodic line in bass clef. Measure 90 starts with a quarter note G2, followed by quarter notes A2, B2, C3, D3, E3, F#3, G3, A3, B3, C4, D4, E4, F#4, G4, A4, B4, C5. Measure 91 continues with quarter notes D4, E4, F#4, G4, A4, B4, C5, D5, E5, F#5, G5, A5, B5, C6, D6, E6, F#6, G6, A6, B6, C7.

92

Drums

Bass

Drum notation for measures 92-93: Similar to the previous system, with a continuous pattern of eighth notes on the snare and bass drums, ending with a double bar line and repeat sign. Bass notation for measures 92-93: A melodic line in bass clef. Measure 92 starts with a quarter note G2, followed by quarter notes A2, B2, C3, D3, E3, F#3, G3, A3, B3, C4, D4, E4, F#4, G4, A4, B4, C5. Measure 93 continues with quarter notes D4, E4, F#4, G4, A4, B4, C5, D5, E5, F#5, G5, A5, B5, C6, D6, E6, F#6, G6, A6, B6, C7.

94

Drums

Bass

Drum notation for measures 94-95: Similar to the previous system, with a continuous pattern of eighth notes on the snare and bass drums, ending with a double bar line and repeat sign. Bass notation for measures 94-95: A melodic line in bass clef. Measure 94 starts with a quarter note G2, followed by quarter notes A2, B2, C3, D3, E3, F#3, G3, A3, B3, C4, D4, E4, F#4, G4, A4, B4, C5. Measure 95 continues with quarter notes D4, E4, F#4, G4, A4, B4, C5, D5, E5, F#5, G5, A5, B5, C6, D6, E6, F#6, G6, A6, B6, C7.

Bob Seger - Still the Same

Drums

♩ = 125,000000

4

6

8

10

12

14

16

18

20

V.S.

Drums

22

24

26

28

30

32

34

36

38

40

Drums

42

44

46

48

50

52

54

56

58

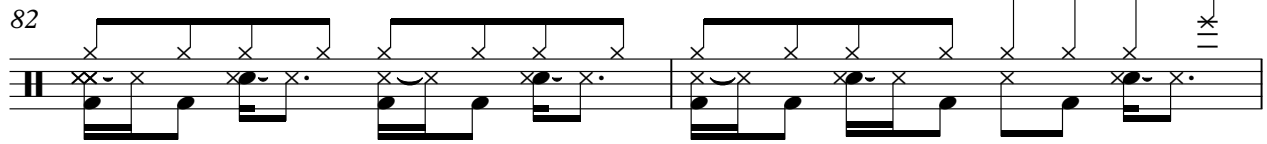
60

Drums

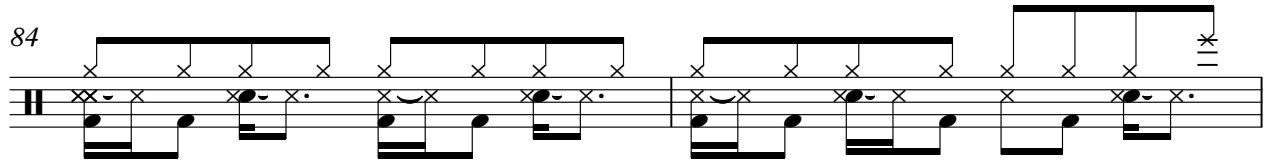
The image displays ten staves of drum notation, numbered 62 through 80. Each staff is divided into four measures. The notation uses a standard drum set layout with a snare drum on the left and a kick drum on the right. The top staff of each system shows the snare drum part, and the bottom staff shows the kick drum part. The notation includes various rhythmic patterns such as eighth notes, quarter notes, and eighth rests, often grouped with beams. Vertical lines above the notes indicate the specific drum being played. The notation is consistent across all staves, showing a repeating rhythmic pattern.

Drums

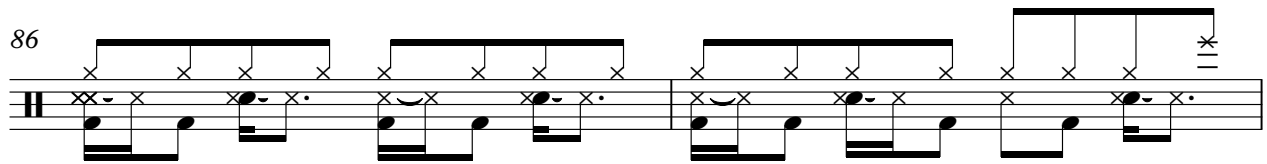
82



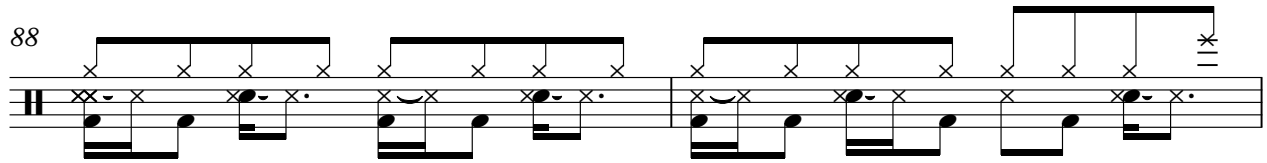
84



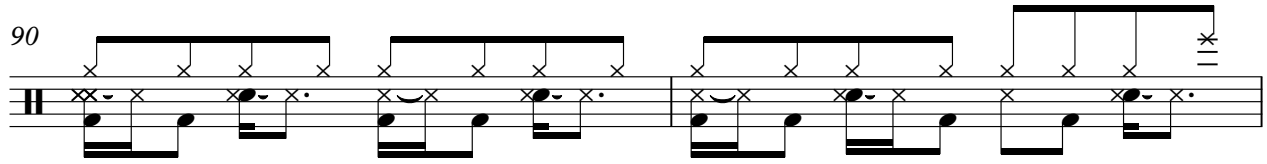
86



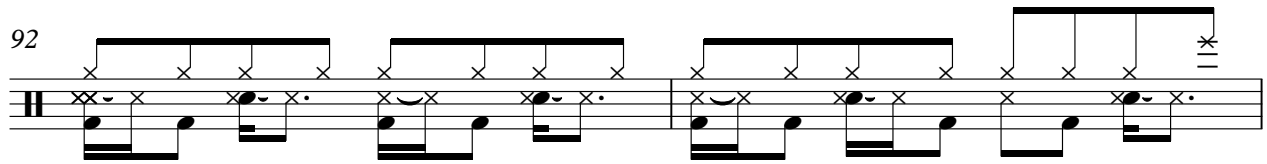
88



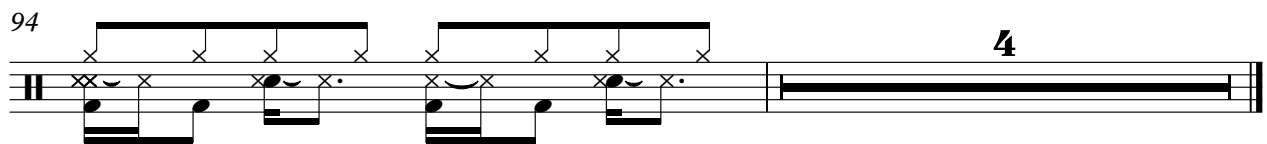
90



92



94



Bob Seger - Still the Same

Bass

♩ = 125,000000



V.S.

43



47



52



56



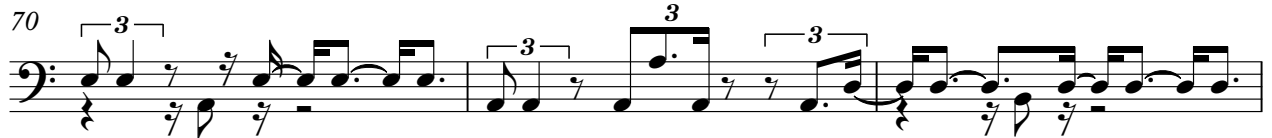
61



65



70



73



77



81



85



89



93

