

♩ = 135,000137
TIMEIST

Percussion

Jazz Guitar

Electric Guitar

Fretless Electric Bass

Rock Organ

4

Perc.

J. Gtr.

E. Bass

Organ

7

Perc.

J. Gtr.

E. Bass

Organ

9

Perc.

J. Gtr.

E. Bass

Organ

11

Perc.

J. Gtr.

E. Bass

Organ

13

Perc. J. Gtr. E. Bass Organ

This system contains measures 13 and 14. The Percussion part features a consistent rhythmic pattern of eighth notes with 'x' marks above them. The J. Gtr. and E. Bass parts play a series of chords, with a measure rest in measure 14. The Organ part has a few notes in measure 13 and a long sustained note in measure 14.

15

Perc. J. Gtr. E. Bass Organ

This system contains measures 15 and 16. The Percussion part continues its rhythmic pattern. The J. Gtr. and E. Bass parts continue with their chordal accompaniment. The Organ part has a long sustained note in measure 15 and another in measure 16.

17

Perc. J. Gtr. E. Bass Organ

This system contains measures 17 and 18. The Percussion part continues its rhythmic pattern. The J. Gtr. and E. Bass parts continue with their chordal accompaniment. The Organ part has a long sustained note in measure 17 and another in measure 18.

19

Perc. J. Gtr. E. Bass Organ

This system covers measures 19 and 20. The Percussion part features a consistent rhythmic pattern of eighth notes with 'x' marks above them. The J. Gtr. and E. Bass parts play a similar rhythmic accompaniment with chords and single notes. The Organ part is mostly silent, with a single note in measure 20.

21

Perc. J. Gtr. E. Bass Organ

This system covers measures 21 and 22. The Percussion part continues its rhythmic pattern. The J. Gtr. and E. Bass parts maintain their accompaniment. The Organ part has a short melodic phrase in measure 21 before becoming silent in measure 22.

23

Perc. J. Gtr. E. Bass Organ

This system covers measures 23 and 24. The Percussion part continues its rhythmic pattern. The J. Gtr. and E. Bass parts maintain their accompaniment. The Organ part has a short melodic phrase in measure 23 before becoming silent in measure 24.

25

Perc. J. Gtr. E. Bass Organ

6

Detailed description: This system covers measures 25 and 26. The Percussion part features a consistent rhythmic pattern of eighth notes with 'x' marks above them. The J. Gtr. and E. Bass parts play a similar eighth-note accompaniment. The Organ part has a melodic line in measure 25, marked with a '6' and a bracket, and a long sustained note in measure 26.

27

Perc. J. Gtr. E. Bass Organ

Detailed description: This system covers measures 27 and 28. The Percussion part continues with the eighth-note pattern. The J. Gtr. and E. Bass parts continue with their accompaniment. The Organ part has a few notes in measure 27 and a long sustained note in measure 28.

29

Perc. J. Gtr. E. Bass Organ

Detailed description: This system covers measures 29 and 30. The Percussion part continues with the eighth-note pattern. The J. Gtr. and E. Bass parts continue with their accompaniment. The Organ part has a long sustained note in measure 29 and another in measure 30.

31

Perc.

J. Gtr.

E. Bass

Organ

33

Perc.

J. Gtr.

E. Gtr.

E. Bass

Organ

35

Perc. E. Gtr. E. Bass Organ

This system covers measures 35 and 36. The Percussion part features a consistent rhythmic pattern of eighth notes with accents. The Electric Guitar part consists of a series of chords, with a key signature change to one sharp (F#) in measure 36. The Electric Bass part provides a simple harmonic accompaniment. The Organ part plays a sustained chord in measure 35, which then changes to a new chord in measure 36.

37

Perc. E. Gtr. E. Bass Organ

This system covers measures 37 and 38. The Percussion part continues with the same eighth-note rhythmic pattern. The Electric Guitar part maintains the chordal accompaniment. The Electric Bass part continues its simple accompaniment. The Organ part plays a sustained chord in measure 37, which changes to a new chord in measure 38.

39

Perc. E. Gtr. E. Bass Organ

This system covers measures 39 and 40. The Percussion part continues with the same eighth-note rhythmic pattern. The Electric Guitar part maintains the chordal accompaniment. The Electric Bass part continues its simple accompaniment. The Organ part plays a sustained chord in measure 39, which changes to a new chord in measure 40.

41

Perc. J. Gtr. E. Gtr. E. Bass Organ

This musical score covers measures 41 and 42. The Percussion part features a steady eighth-note pattern with accents. The J. Gtr. part has a melodic line with a repeat sign in measure 42. The E. Gtr. part plays a rhythmic pattern of eighth notes with a slash and a vertical line, indicating a specific technique. The E. Bass part provides a simple bass line. The Organ part has a single note in measure 41 that is held over into measure 42.

43

Perc. J. Gtr. E. Bass Organ

This musical score covers measures 43 and 44. The Percussion part continues with the eighth-note pattern. The J. Gtr. part has a melodic line with a repeat sign in measure 44. The E. Bass part provides a simple bass line. The Organ part has a melodic line in measure 43 that is held over into measure 44.

45

Perc. J. Gtr. E. Bass Organ

This system covers measures 45 to 48. The Percussion part features a consistent rhythmic pattern of eighth notes with 'x' marks above them. The J. Gtr. and E. Bass parts play a similar rhythmic accompaniment with chords and single notes. The Organ part has a melodic line in the first two measures, followed by a long sustain in the last two measures.

47

Perc. J. Gtr. E. Bass Organ

This system covers measures 47 to 50. The Percussion part continues with the same eighth-note pattern. The J. Gtr. and E. Bass parts maintain their accompaniment. The Organ part has a melodic line in the first two measures, followed by a long sustain in the last two measures.

49

Perc. J. Gtr. E. Bass Organ

This system covers measures 49 to 52. The Percussion part continues with the same eighth-note pattern. The J. Gtr. and E. Bass parts maintain their accompaniment. The Organ part has a melodic line in the first two measures, followed by a long sustain in the last two measures.

51

Perc.

J. Gtr.

E. Bass

Organ

53

Perc.

J. Gtr.

E. Bass

Organ

55

Perc. J. Gtr. E. Gtr. E. Bass Organ

This musical score block covers measures 55 and 56. It features five staves: Percussion (Perc.), J. Gtr. (Jazz Guitar), E. Gtr. (Electric Guitar), E. Bass (Electric Bass), and Organ. Measure 55 shows a complex rhythmic pattern in the Perc. staff with eighth notes and rests. The J. Gtr. staff has a series of chords. The E. Gtr. staff has a melodic line with slurs. The E. Bass staff has a steady eighth-note bass line. The Organ staff has a series of chords. Measure 56 continues these patterns with some variations in the Perc. and E. Gtr. parts.

57

Perc. E. Gtr. E. Bass Organ

This musical score block covers measures 57, 58, 59, and 60. It features four staves: Percussion (Perc.), E. Gtr. (Electric Guitar), E. Bass (Electric Bass), and Organ. Measure 57 continues the Perc. pattern from the previous block. The E. Gtr. staff has a melodic line with slurs. The E. Bass staff has a steady eighth-note bass line. The Organ staff has a series of chords. Measure 58 continues these patterns. Measure 59 shows a variation in the Perc. and E. Gtr. parts. Measure 60 concludes the sequence with a final chord in the Organ staff.

59

Perc. E. Gtr. E. Bass Organ

This system contains measures 59 and 60. The Percussion part features a steady eighth-note pattern. The Electric Guitar part has a rest in measure 59 and begins a melodic line in measure 60. The Electric Bass part plays a consistent eighth-note line. The Organ part provides a harmonic accompaniment with chords.

61

Perc. E. Gtr. E. Bass Organ

This system contains measures 61 and 62. The Percussion part continues its eighth-note pattern. The Electric Guitar part continues its melodic line from the previous system. The Electric Bass part maintains its eighth-note accompaniment. The Organ part continues with its chordal accompaniment.

63

Perc. E. Gtr. E. Bass Organ

This system contains measures 63 and 64. The Percussion part continues its eighth-note pattern. The Electric Guitar part continues its melodic line. The Electric Bass part continues its eighth-note accompaniment. The Organ part continues with its chordal accompaniment.

65

Perc. E. Gtr. E. Bass Organ

This system contains measures 65 through 68. The Percussion part features a consistent rhythmic pattern of eighth notes. The Electric Guitar part plays a melodic line with eighth notes and some slurs. The Electric Bass part provides a steady accompaniment with eighth notes. The Organ part consists of a series of chords, primarily triads, in the right hand.

67

Perc. E. Gtr. E. Bass Organ

This system contains measures 69 through 72. The Percussion part continues with the same eighth-note pattern. The Electric Guitar part has a brief rest in measure 69 before rejoining the melodic line. The Electric Bass part continues with eighth notes. The Organ part features a mix of chords and some melodic movement in the right hand.

69

Perc. E. Gtr. E. Bass Organ

This system contains measures 73 through 76. The Percussion part maintains the eighth-note pattern. The Electric Guitar part continues its melodic line. The Electric Bass part plays eighth notes. The Organ part continues with a sequence of chords.

71

Perc. E. Gtr. E. Bass Organ

This system covers measures 71 and 72. The Percussion part features a steady eighth-note pattern. The Electric Guitar part has a rhythmic accompaniment with chords and single notes. The Electric Bass part provides a simple bass line. The Organ part plays chords in the first measure and then sustains a long chord in the second measure.

73

Perc. E. Gtr. E. Bass Organ

This system covers measures 73 and 74. The Percussion part continues with eighth notes, including some accented notes. The Electric Guitar part has a more active line with many chords and some melodic fragments. The Electric Bass part has a simple line with some eighth notes. The Organ part plays chords in the first measure and then sustains a long chord in the second measure.

75

Perc. E. Gtr. E. Bass Organ

This system covers measures 75 and 76. The Percussion part continues with eighth notes. The Electric Guitar part has a rhythmic accompaniment with chords and single notes. The Electric Bass part provides a simple bass line. The Organ part plays chords in the first measure and then sustains a long chord in the second measure.

77

Perc.

E. Gtr.

E. Bass

Organ

79

Perc.

J. Gtr.

E. Gtr.

E. Bass

Organ

81

Perc. J. Gtr. E. Bass Organ

Detailed description: This system covers measures 81 and 82. The Percussion part features a steady eighth-note pattern. The J. Gtr. and E. Bass parts play a rhythmic accompaniment with chords and single notes. The Organ part has a melodic line in the first measure that concludes with a long sustain note in the second measure.

83

Perc. J. Gtr. E. Bass Organ

Detailed description: This system covers measures 83 and 84. The Percussion part continues with its eighth-note pattern. The J. Gtr. and E. Bass parts maintain their accompaniment. The Organ part has a melodic line in the first measure that concludes with a long sustain note in the second measure.

85

Perc. J. Gtr. E. Bass Organ

Detailed description: This system covers measures 85 and 86. The Percussion part continues with its eighth-note pattern. The J. Gtr. and E. Bass parts maintain their accompaniment. The Organ part has a melodic line in the first measure that concludes with a long sustain note in the second measure. A bracket with the number '6' is placed below the Organ staff, spanning the first six notes of the first measure.

87

Perc. J. Gtr. E. Bass Organ

This system contains measures 87 and 88. The Percussion part features a steady eighth-note pattern. The J. Gtr. and E. Bass parts play a rhythmic accompaniment with chords and single notes. The Organ part has a few notes in the first measure followed by a long, sustained chord in the second measure.

89

Perc. J. Gtr. E. Bass Organ

This system contains measures 89 and 90. The Percussion part continues with its eighth-note pattern. The J. Gtr. and E. Bass parts maintain their accompaniment. The Organ part has a long, sustained chord in the first measure and another in the second measure.

91

Perc. J. Gtr. E. Bass Organ

This system contains measures 91 and 92. The Percussion part continues with its eighth-note pattern. The J. Gtr. and E. Bass parts maintain their accompaniment. The Organ part has a long, sustained chord in the first measure and another in the second measure.

93

Perc.

J. Gtr.

E. Bass

Organ

Detailed description: This system covers measures 93 and 94. The Percussion part (Perc.) features a consistent eighth-note pattern. The J. Gtr. (Jazz Guitar) and E. Bass parts play chords and single notes, with a fermata over the final note of measure 94. The Organ part consists of sustained chords, also with a fermata at the end of measure 94.

95

Perc.

J. Gtr.

E. Bass

Organ

Detailed description: This system covers measures 95 and 96. The Percussion part (Perc.) features a consistent eighth-note pattern. The J. Gtr. (Jazz Guitar) and E. Bass parts play chords and single notes, with a fermata over the final note of measure 96. The Organ part consists of sustained chords, also with a fermata at the end of measure 96.

97

Perc.

J. Gtr.

E. Bass

Organ

Detailed description: This system covers measures 97 and 98. The Percussion part (Perc.) features a consistent eighth-note pattern. The J. Gtr. (Jazz Guitar) and E. Bass parts play chords and single notes, with a fermata over the final note of measure 98. The Organ part consists of sustained chords, also with a fermata at the end of measure 98.

99

Perc. J. Gtr. E. Gtr. E. Bass Organ

Detailed description: This block contains the musical notation for measures 99 and 100. The Percussion part features a complex rhythmic pattern with eighth and sixteenth notes. The J. Gtr. (Jazz Guitar) part has a melodic line with some rests. The E. Gtr. (Electric Guitar) part has a melodic line with some rests. The E. Bass (Electric Bass) part has a steady eighth-note line. The Organ part has two long, sustained chords, one in each measure, indicated by large ovals.

101

Perc. E. Gtr. E. Bass Organ

Detailed description: This block contains the musical notation for measures 101 and 102. The Percussion part continues with a rhythmic pattern. The E. Gtr. part has a melodic line with some rests. The E. Bass part has a steady eighth-note line. The Organ part has two long, sustained chords, one in each measure, indicated by large ovals.

103

Perc. E. Gtr. E. Bass Organ

This system contains measures 103 and 104. The Percussion part features a steady eighth-note pattern with an asterisk in measure 104. The Electric Guitar part has a rest in measure 103 and a melodic line in measure 104. The Electric Bass part plays a consistent eighth-note line. The Organ part consists of two sustained chords, one in each measure.

105

Perc. E. Gtr. E. Bass Organ

This system contains measures 105 and 106. The Percussion part continues with the eighth-note pattern. The Electric Guitar part plays a melodic line with slurs. The Electric Bass part continues with the eighth-note line. The Organ part consists of two sustained chords, one in each measure.

107

Perc. E. Gtr. E. Bass Organ

This system contains measures 107 and 108. The Percussion part features the eighth-note pattern with an asterisk in measure 108. The Electric Guitar part has a rest in measure 107 and a melodic line in measure 108. The Electric Bass part continues with the eighth-note line. The Organ part consists of two sustained chords, one in each measure.

109

Perc. E. Gtr. E. Bass Organ

Detailed description: This system of music covers measures 109 and 110. The Percussion part features a steady eighth-note pattern. The Electric Guitar (E. Gtr.) part has a melodic line with a slur over measures 109-110. The Electric Bass (E. Bass) part provides a rhythmic accompaniment with eighth notes. The Organ part has a long, sustained chord that spans both measures, indicated by a large oval.

110

Perc. J. Gtr. E. Gtr. E. Bass Organ

Detailed description: This system of music covers measures 110 and 111. The Percussion part continues with eighth notes. The Jazz Guitar (J. Gtr.) part is mostly silent, with a few notes at the end of measure 111. The Electric Guitar (E. Gtr.) part has a melodic line with a slur over measures 110-111. The Electric Bass (E. Bass) part provides a rhythmic accompaniment with eighth notes. The Organ part has a long, sustained chord that spans both measures, indicated by a large oval.

Percussion

♩ = 135,000137
TIMEIST

4

7

9

11

13

15

17

19

21

23

V.S.

Percussion

25

27

29

31

33

35

37

39

41

43

Percussion

45

Measure 45: A staff with a treble clef and a double bar line. The notation consists of a series of eighth notes grouped in pairs, with a bar line in the middle. Above the staff, there are four groups of four 'x' marks, each group connected by a horizontal line, indicating a specific rhythmic pattern.

47

Measure 47: Similar to measure 45, but with a different rhythmic pattern in the notes.

49

Measure 49: Similar to measure 45, with a different rhythmic pattern in the notes.

51

Measure 51: Similar to measure 45, with a different rhythmic pattern in the notes.

53

Measure 53: Similar to measure 45, with a different rhythmic pattern in the notes.

55

Measure 55: Similar to measure 45, with a different rhythmic pattern in the notes.

57

Measure 57: Similar to measure 45, with a different rhythmic pattern in the notes.

59

Measure 59: Similar to measure 45, with a different rhythmic pattern in the notes.

61

Measure 61: Similar to measure 45, with a different rhythmic pattern in the notes.

63

Measure 63: Similar to measure 45, with a different rhythmic pattern in the notes.

V.S.

Percussion

65

Musical notation for measure 65, featuring a rhythmic pattern of eighth notes on a five-line staff.

67

Musical notation for measure 67, featuring a rhythmic pattern of eighth notes on a five-line staff.

69

Musical notation for measure 69, featuring a rhythmic pattern of eighth notes on a five-line staff.

71

Musical notation for measure 71, featuring a rhythmic pattern of eighth notes on a five-line staff.

73

Musical notation for measure 73, featuring a rhythmic pattern of eighth notes on a five-line staff with a double bar line and a repeat sign.

75

Musical notation for measure 75, featuring a rhythmic pattern of eighth notes on a five-line staff.

77

Musical notation for measure 77, featuring a rhythmic pattern of eighth notes on a five-line staff with a double bar line and a repeat sign.

79

Musical notation for measure 79, featuring a rhythmic pattern of eighth notes on a five-line staff.

81

Musical notation for measure 81, featuring a rhythmic pattern of eighth notes on a five-line staff.

83

Musical notation for measure 83, featuring a rhythmic pattern of eighth notes on a five-line staff.

85

Measure 85: A staff with a treble clef and a double bar line. The notation consists of a series of eighth notes with stems pointing down, grouped in pairs. The notes are on the first and second lines of the staff.

87

Measure 87: A staff with a treble clef and a double bar line. The notation consists of a series of eighth notes with stems pointing down, grouped in pairs. The notes are on the first and second lines of the staff.

89

Measure 89: A staff with a treble clef and a double bar line. The notation consists of a series of eighth notes with stems pointing down, grouped in pairs. The notes are on the first and second lines of the staff.

91

Measure 91: A staff with a treble clef and a double bar line. The notation consists of a series of eighth notes with stems pointing down, grouped in pairs. The notes are on the first and second lines of the staff.

93

Measure 93: A staff with a treble clef and a double bar line. The notation consists of a series of eighth notes with stems pointing down, grouped in pairs. The notes are on the first and second lines of the staff.

95

Measure 95: A staff with a treble clef and a double bar line. The notation consists of a series of eighth notes with stems pointing down, grouped in pairs. The notes are on the first and second lines of the staff.

97

Measure 97: A staff with a treble clef and a double bar line. The notation consists of a series of eighth notes with stems pointing down, grouped in pairs. The notes are on the first and second lines of the staff.

99

Measure 99: A staff with a treble clef and a double bar line. The notation consists of a series of eighth notes with stems pointing down, grouped in pairs. The notes are on the first and second lines of the staff. There is a fermata over the first two notes and a star symbol above the staff.

101

Measure 101: A staff with a treble clef and a double bar line. The notation consists of a series of eighth notes with stems pointing down, grouped in pairs. The notes are on the first and second lines of the staff.

103

Measure 103: A staff with a treble clef and a double bar line. The notation consists of a series of eighth notes with stems pointing down, grouped in pairs. The notes are on the first and second lines of the staff. There is a star symbol above the staff.

V.S.

6

Percussion

105

Musical notation for measure 105, featuring a double bar line on the left and a series of rhythmic patterns. The notation consists of two staves: the upper staff has a series of eighth notes with stems pointing down, and the lower staff has a series of eighth notes with stems pointing up. The notes are grouped into pairs, with a horizontal line above the first pair of each group. The measure ends with a double bar line.

107

Musical notation for measure 107, featuring a double bar line on the left and a series of rhythmic patterns. The notation consists of two staves: the upper staff has a series of eighth notes with stems pointing down, and the lower staff has a series of eighth notes with stems pointing up. The notes are grouped into pairs, with a horizontal line above the first pair of each group. The measure ends with a double bar line.

109

Musical notation for measure 109, featuring a double bar line on the left and a series of rhythmic patterns. The notation consists of two staves: the upper staff has a series of eighth notes with stems pointing down, and the lower staff has a series of eighth notes with stems pointing up. The notes are grouped into pairs, with a horizontal line above the first pair of each group. The measure ends with a double bar line.

110

Musical notation for measure 110, featuring a double bar line on the left and a series of rhythmic patterns. The notation consists of two staves: the upper staff has a series of eighth notes with stems pointing down, and the lower staff has a series of eighth notes with stems pointing up. The notes are grouped into pairs, with a horizontal line above the first pair of each group. The measure ends with a double bar line.

Jazz Guitar

♩ = 135,000137



42

46

50

54

24

81

85

89

93

97

99

11

Electric Guitar

♩ = 135,000137

33

37

41

14

58

62

66

70

74

77

20

2

Electric Guitar

100



104

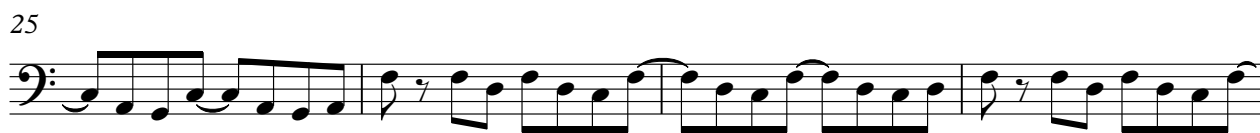


108



Fretless Electric Bass

♩ = 135,000137



V.S.

43



47



51



55



59



63



67



71



76



81



85



89



93



97



101



105

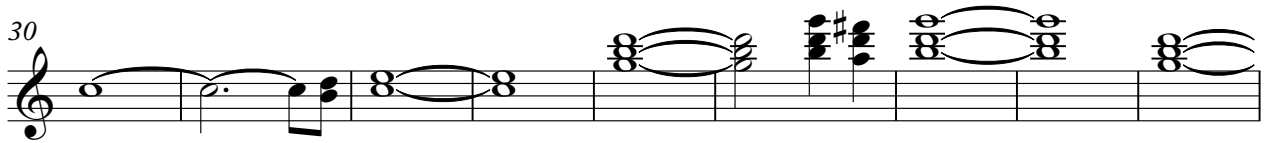
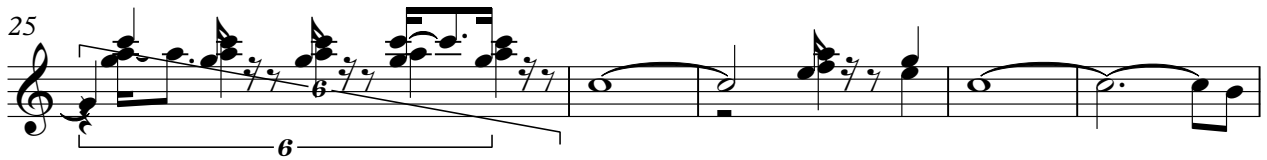


109



Rock Organ

♩ = 135,000137



V.S.

Rock Organ

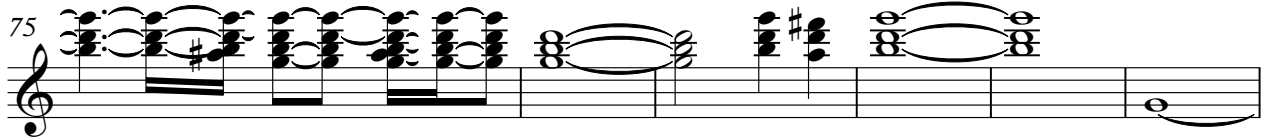
66



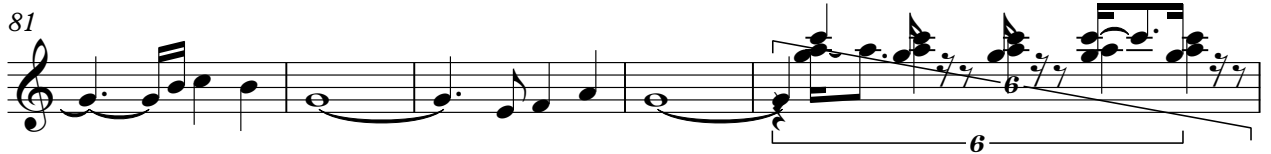
70



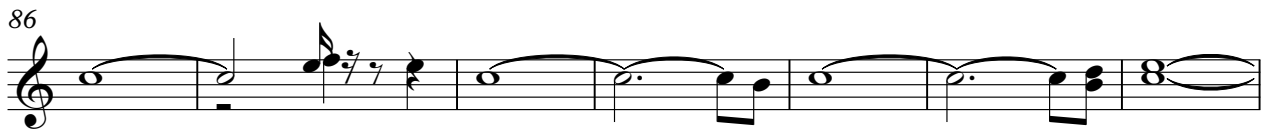
75




81



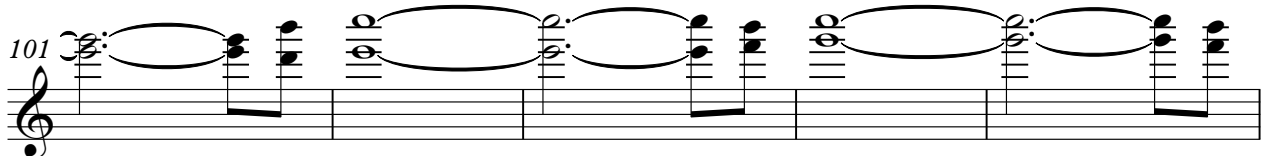
86



93



101



106

