

Brassens - Cupidon S`en Fout

♩ = 160,000000

Alto

Basso

Alto

Basso

11

m,loдие

Alto

Basso

16

m,loдие

Alto

Basso

21

m, lode

Alto

Basso

26

m, lode

Alto

Basso

31

m, lode

Alto

Basso

36

m, lode

Alto

Basso

41

m, lode

Alto

Basso

46

m, lode

Alto

Basso

51

m, lode

Alto

Basso

56

m, lode

Alto

Basso

61

m, lode

Alto

Basso

66

m, lode

Alto

Basso

71

m, lode

Alto

Basso

76

m, lode

Alto

Basso

81

m, lode

Alto

Basso

86

m, lode

Alto

Basso

91

m, lode

Alto

Basso

96

m, lode

Alto

Basso

101

m, lode

Alto

Basso

106

m, lode

Alto

Basso

111

m, lode

Alto

Basso

116

m, lode

Alto

Basso

121

m, lode

Alto

Basso

126

m, lode

Alto

Basso

131

m, lode

Alto

Basso

136

m, lode

Alto

Basso

141

m, lode

Alto

Basso

146

m, lode

Alto

Basso

151

m, lode

Alto

Basso

156

m, lode

Alto

Basso

161

m, lode

Alto

Basso

166

m, lode

Alto

Basso

171

m, lode

Alto

Basso

176

Alto

Basso

180

Alto

Basso

m,lodie

Brassens - Cupidon S`en Fout

♩ = 160,000000

11

16

22

28

37

43

49

53

2

m,lodie

60



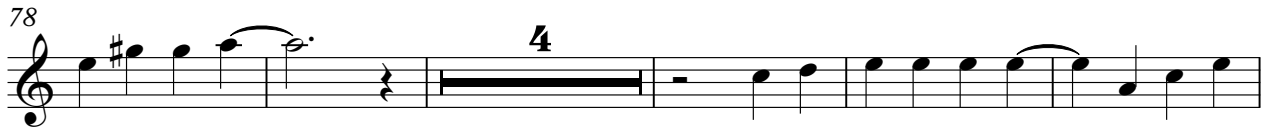
66



72




78



87



93



99



108



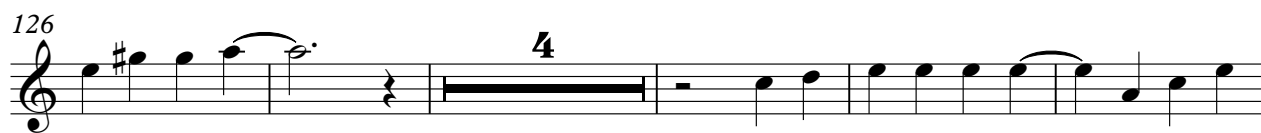
114



120



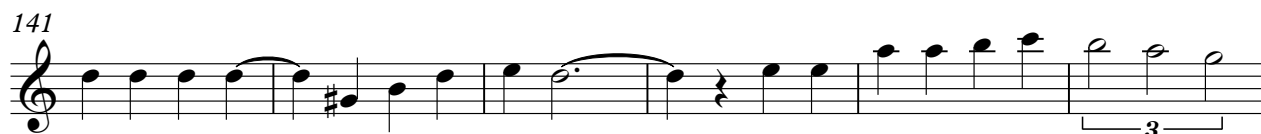
126



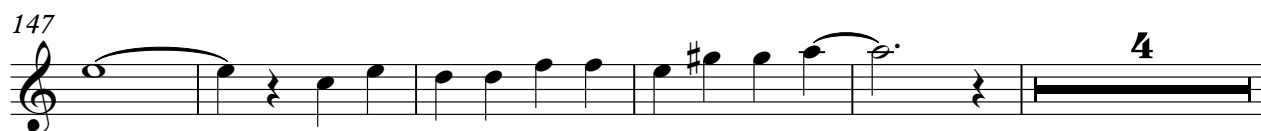
135



141



147



156



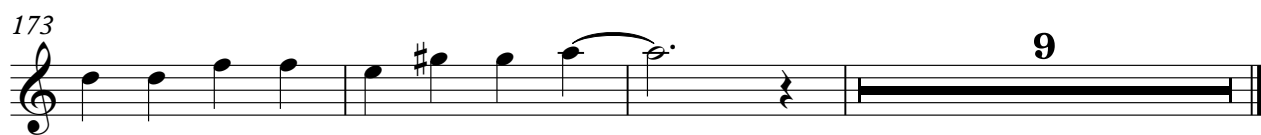
162



168



173



Brassens - Cupidon S'en Fout

Alto

♩ = 160,000000

6

12

18

24

30

36

42

48

54

V.S.

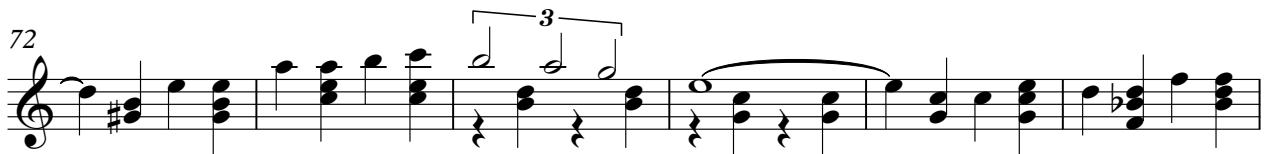
60



66



72



78



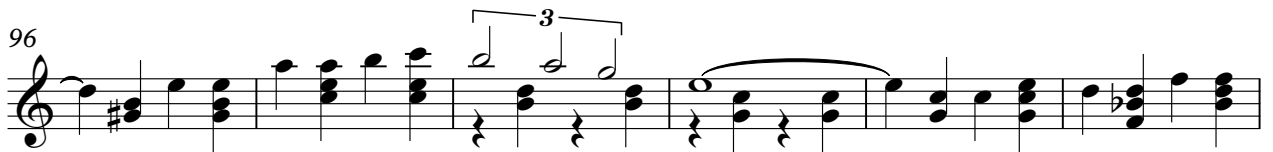
84



90



96



102



108



114



120

126

132

138

144

150

156

162

168

174

179

The musical notation is written on a single staff with a treble clef. It consists of five measures. Measure 179 starts with a quarter rest, followed by a quarter note G4, a quarter note A4, and a quarter note B4. Measure 180 contains a quarter note C5, a quarter note B4, a quarter note A4, and a quarter note G4. Measure 181 features a quarter note F4, a quarter note E4, a quarter note D4, and a quarter note C4. Measure 182 has a quarter note B3, a quarter note A3, a quarter note G3, and a quarter note F3. Measure 183 begins with a quarter note E3, a quarter note D3, and a quarter note C3, followed by a whole note chord consisting of G2, F2, and E2. The piece concludes with a double bar line.

Brassens - Cupidon S`en Fout

Basso

♩ = 160,000000



V.S.

61



67



73



79



85



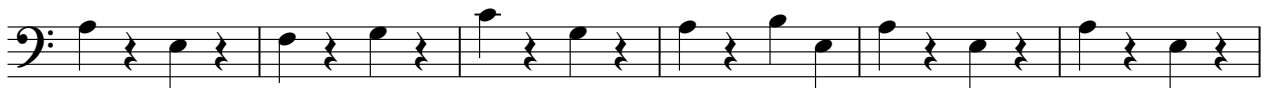
91



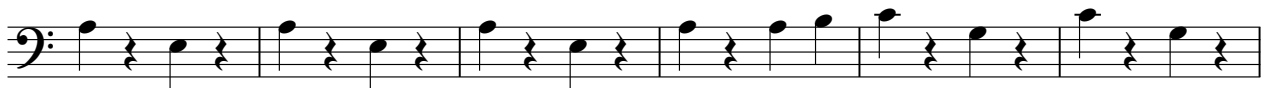
97



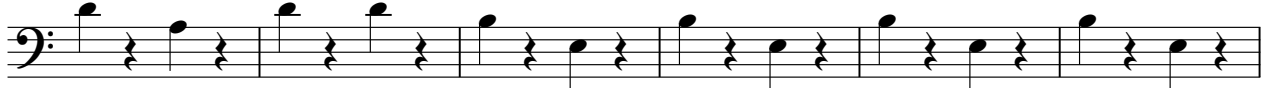
103



109



115



121



127



133



139



145



151



157



163



169



175



V.S.

4

Basso

180

