

Brassens - Embrasse Les Tous

♩ = 140,000137
Mélodie

Mélodie

Guitare

Contrebasse

Detailed description: This system contains the first three measures of the piece. The melody line is mostly silent. The guitar part features a rhythmic accompaniment of eighth notes with chords. The double bass part provides a simple harmonic foundation with quarter notes.

4

Mélodie

Guitare

Contrebasse

Detailed description: This system contains measures 4 through 7. The melody line begins with a rhythmic pattern of eighth notes. The guitar continues with its accompaniment, and the double bass part remains consistent.

8

Mélodie

Guitare

Contrebasse

Detailed description: This system contains measures 8 through 11. The melody line continues with its eighth-note pattern. The guitar part shows some chordal changes, and the double bass part maintains the same rhythmic structure.

12

Mélocdie

Guitare

Contrebasse

16

Mélocdie

Guitare

Contrebasse

20

Mélocdie

Guitare

Contrebasse

25

Mélocdie

Guitare

Contrebasse

30

Mélocdie

Guitare

Contrebasse

34

Mélocdie

Guitare

Contrebasse

39

Mélocdie

Guitare

Contrebasse

43

Mélocdie

Guitare

Contrebasse

47

Mélocdie

Guitare

Contrebasse

52

Mélocdie

Guitare

Contrebasse

56

Mélocdie

Guitare

Contrebasse

60

Mélocdie

Guitare

Contrebasse

78

Mélocdie

Guitare

Contrebasse

82

Mélocdie

Guitare

Contrebasse

87

Mélocdie

Guitare

Contrebasse

91

Mélocdie

Guitare

Contrebasse

95

Mélocdie

Guitare

Contrebasse

99

Mélocdie

Guitare

Contrebasse

103

Mélocdie

Guitare

Contrebasse

106

Mélocdie

Guitare

Contrebasse

Brassens - Embrasse Les Tous

Mélodie

♩ = 140,000137
Mélodie 4

9

15

21

27

33

39

45

50

56

V.S.



Brassens - Embrasse Les Tous

Guitare

♩ = 140,000137

Guitare

4

9

14

19

25

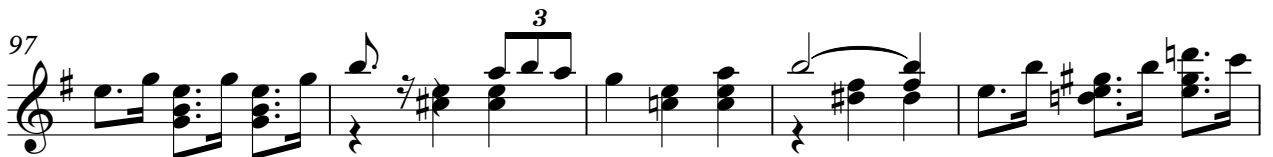
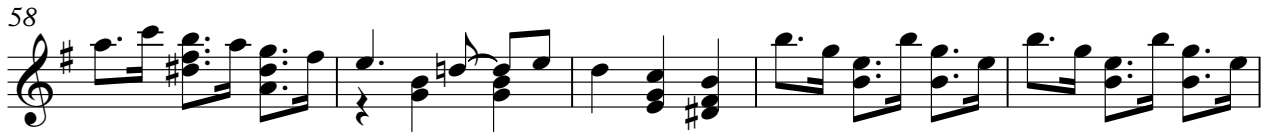
31

37

43

48

V.S.



Guitar

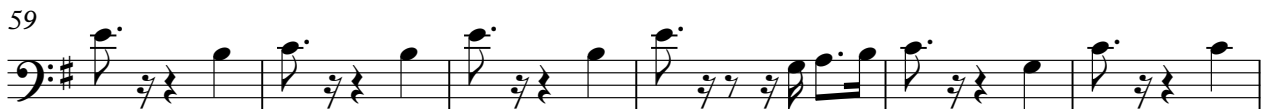
105

Musical notation for guitar, measure 105. The notation is on a single staff with a treble clef and a key signature of one sharp (F#). The measure contains several chords and melodic lines. The first part shows a sequence of chords: F#m (F#2, A2, C3), F#m (F#2, A2, C3), and F#m (F#2, A2, C3). This is followed by a quarter rest, then a quarter note F#3, a quarter note G#3, and a quarter note A3. The next part shows a sequence of chords: F#m (F#2, A2, C3), F#m (F#2, A2, C3), and F#m (F#2, A2, C3). This is followed by a quarter rest, then a quarter note F#3, a quarter note G#3, and a quarter note A3. The measure ends with a quarter rest, a quarter note F#3, a quarter note G#3, and a quarter note A3.

Brassens - Embrasse Les Tous

Contrebasse

♩ = 140,000137
Contrebasse



V.S.

65



72



78



85



91



98



104

