

Brassens - HeCatombe

$\text{♩} = 170,000092$
Mélodie

Mélodie

$\text{♩} = 170,000092$
Guitare

Guitare

Contrebasse

Contrebasse

6

Mélodie

Guitare

Contrebasse

10

Mélodie

Guitare

Contrebasse

14

Mélocdie

Guitare

Contrebasse

18

Mélocdie

Guitare

Contrebasse

22

Mélocdie

Guitare

Contrebasse

26

Mélocdie

Guitare

Contrebasse

30

Mélocdie

Guitare

Contrebasse

34

Mélocdie

Guitare

Contrebasse

38

Mélocdie

Guitare

Contrebasse

42

Mélocdie

Guitare

Contrebasse

46

Mélocdie

Guitare

Contrebasse

50

Mélocdie

Guitare

Contrebasse

54

Mélocdie

Guitare

Contrebasse

58

Mélocdie

Guitare

Contrebasse

62

Mélocdie

Guitare

Contrebasse

66

Mélocdie

Guitare

Contrebasse

70

Mélocdie

Guitare

Contrebasse

74

Mélocdie

Guitare

Contrebasse

78

Mélocdie

Guitare

Contrebasse

82

Mélocdie

Guitare

Contrebasse

86

Mélocdie

Guitare

Contrebasse

90

Mélocdie

Guitare

Contrebasse

94

Mélocdie

Guitare

Contrebasse

98

Mélocdie

Guitare

Contrebasse

102

Mélocdie

Guitare

Contrebasse

106

Mélocdie

Guitare

Contrebasse

110

Mélocdie

Guitare

Contrebasse

114

Mélocdie

Guitare

Contrebasse

118

Mélocdie

Guitare

Contrebasse

Mélodie

Brassens - HeCatombe

♩ = 170,000092
Mélodie 4

10

16 3

24

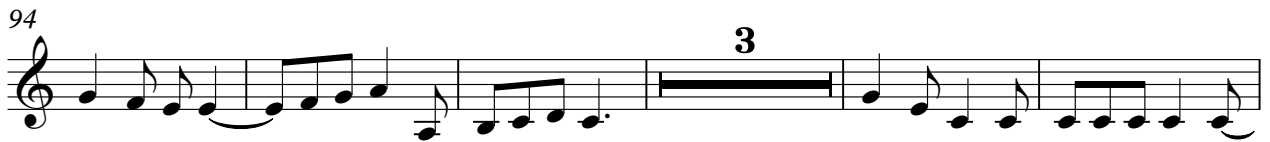
30

36 3

44

50

55 3



Brassens - HeCatombe

Guitare

♩ = 170,000092

Guitare

7

12

17

22

27

32

37

42

47

V.S.

52

57

62

67

72

77

82

87

92

97

102



107



112



117



Brassens - HeCatombe

Contrebasse

♩ = 170,00092

Contrebasse

Measures 1-8: Bass clef, 6/8 time signature. The music consists of a series of chords and eighth notes, starting with a half note chord in the first measure.

Measures 9-16: Bass clef, 6/8 time signature. Measures 9-10 contain eighth notes. Measure 11 has a 7/7 time signature change. Measures 12-16 continue with eighth notes and chords.

Measures 17-24: Bass clef, 6/8 time signature. Measure 17 has a key signature change to B-flat. The music features a series of chords and eighth notes.

Measures 25-32: Bass clef, 6/8 time signature. Measures 25-26 contain eighth notes. Measure 27 has a 7/7 time signature change. Measures 28-32 continue with eighth notes and chords.

Measures 33-40: Bass clef, 6/8 time signature. Measure 33 has a key signature change to B-flat. The music features a series of chords and eighth notes.

Measures 41-48: Bass clef, 6/8 time signature. Measure 41 has a key signature change to B-flat. The music features a series of chords and eighth notes.

Measures 49-56: Bass clef, 6/8 time signature. Measure 49 has a 7/7 time signature change. Measures 50-56 continue with eighth notes and chords.

Measures 57-64: Bass clef, 6/8 time signature. Measure 57 has a key signature change to B-flat. The music features a series of chords and eighth notes.

Measures 65-72: Bass clef, 6/8 time signature. Measure 65 has a 7/7 time signature change. Measures 66-72 continue with eighth notes and chords.

Measures 73-80: Bass clef, 6/8 time signature. Measure 73 has a key signature change to B-flat. The music features a series of chords and eighth notes.

V.S.

2

Contrebasse

81

Musical notation for Contrebasse, measures 81-88. The staff shows a sequence of eighth notes and chords, with some notes beamed together and a final measure containing a 7/7 time signature.

89

Musical notation for Contrebasse, measures 89-96. The staff shows a sequence of eighth notes and chords, with a flat sign (b) appearing above the staff in measure 92.

97

Musical notation for Contrebasse, measures 97-104. The staff shows a sequence of eighth notes and chords, with some notes beamed together.

105

Musical notation for Contrebasse, measures 105-112. The staff shows a sequence of eighth notes and chords, with a flat sign (b) appearing above the staff in measure 110.

113

Musical notation for Contrebasse, measures 113-117. The staff shows a sequence of chords, with some notes beamed together.

118

Musical notation for Contrebasse, measures 118-125. The staff shows a sequence of chords and eighth notes, ending with a double bar line.