

Brassens - La Messe Au Pendu

Mélodie

Guitare

Contrebasse

$\text{♩} = 150,000000$

This system contains the first three staves of the score. The top staff is labeled 'Mélodie' and features a treble clef with a 6/8 time signature. It begins with four measures of whole rests, followed by a melodic line of eighth notes. The middle staff is labeled 'Guitare' and uses a treble clef with a 6/8 time signature, playing a series of chords. The bottom staff is labeled 'Contrebasse' and uses a bass clef with a 6/8 time signature, playing a bass line of dotted eighth notes. A tempo marking of $\text{♩} = 150,000000$ is placed above the first staff.

Mélodie

Guitare

Contrebasse

7

This system contains the next three staves, starting at measure 7. The 'Mélodie' staff continues with eighth notes. The 'Guitare' staff continues with chords, including some with sharps. The 'Contrebasse' staff continues with a bass line that includes some eighth notes and a sharp sign.

Mélodie

Guitare

Contrebasse

12

This system contains the final three staves, starting at measure 12. The 'Mélodie' staff continues with eighth notes, including a measure with a double bar line and a fermata. The 'Guitare' staff continues with chords, including some with flats and sharps. The 'Contrebasse' staff continues with a bass line that includes eighth notes and a flat sign.

16

Mélocdie

Guitare

Contrebasse

21

Mélocdie

Guitare

Contrebasse

26

Mélocdie

Guitare

Contrebasse

31

Mélocdie

Guitare

Contrebasse

36

Mélocdie

Guitare

Contrebasse

41

Mélocdie

Guitare

Contrebasse

46

Mélocdie

Guitare

Contrebasse

51

Mélocdie

Guitare

Contrebasse

56

Mélocdie

Guitare

Contrebasse

61

Mélocdie

Guitare

Contrebasse

66

Mélocdie

Guitare

Contrebasse

71

Mélocdie

Guitare

Contrebasse

76

Mélocdie

Guitare

Contrebasse

80

Mélocdie

Guitare

Contrebasse

85

Mélocdie

Guitare

Contrebasse

90

Mélocdie

Guitare

Contrebasse

95

Mélocdie

Guitare

Contrebasse

100

Mélocdie

Guitare

Contrebasse

105

Mélocdie

Guitare

Contrebasse

110

Mélocdie

Guitare

Contrebasse

114

Mélocdie

Guitare

Contrebasse

Mélodie

Brassens - La Messe Au Pendu

♩ = 150,000000
Mélodie 4

10

16

22

28

34

40

46

52

58

V.S.

64



70



76



82



88



94



100



106



112



2

Brassens - La Messe Au Pendu

Guitare

♩ = 150,000000

Guitare

First measure of the guitar accompaniment, starting with a treble clef and a 6/8 time signature. The music consists of a series of chords.

9

Measures 9 through 16 of the guitar accompaniment.

17

Measures 17 through 24 of the guitar accompaniment.

25

Measures 25 through 32 of the guitar accompaniment.

33

Measures 33 through 40 of the guitar accompaniment.

41

Measures 41 through 48 of the guitar accompaniment.

49

Measures 49 through 56 of the guitar accompaniment.

57

Measures 57 through 64 of the guitar accompaniment.

65

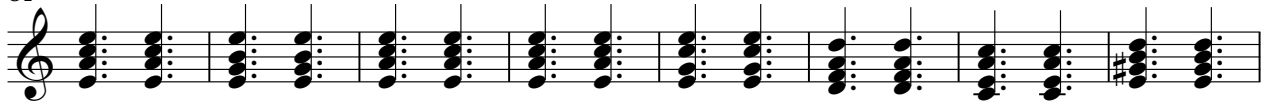
Measures 65 through 72 of the guitar accompaniment.

73

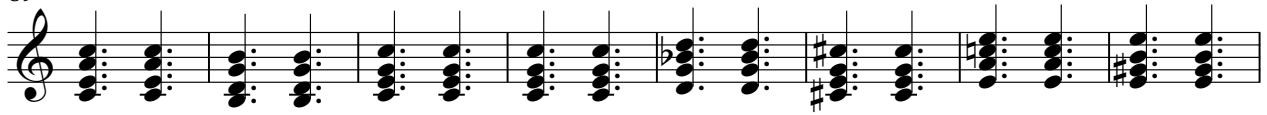
Measures 73 through 80 of the guitar accompaniment.

V.S.

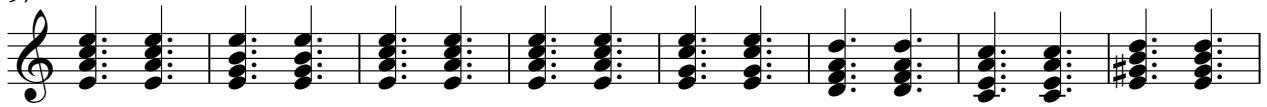
81



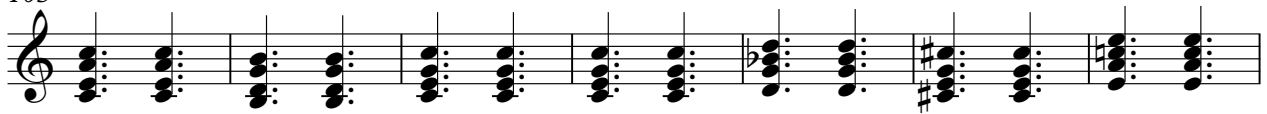
89



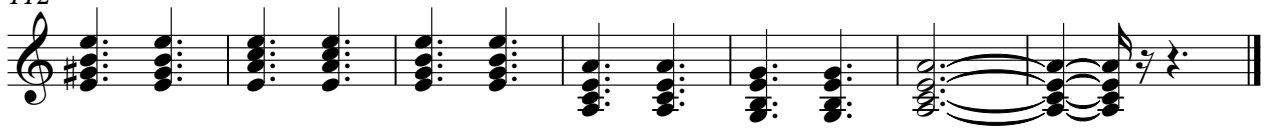
97



105



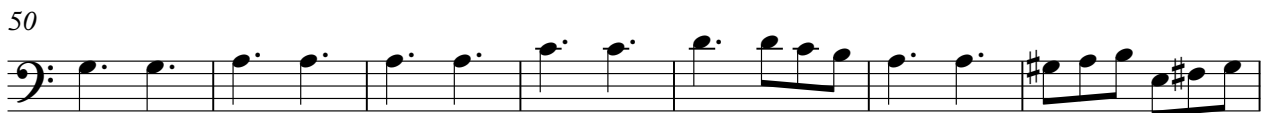
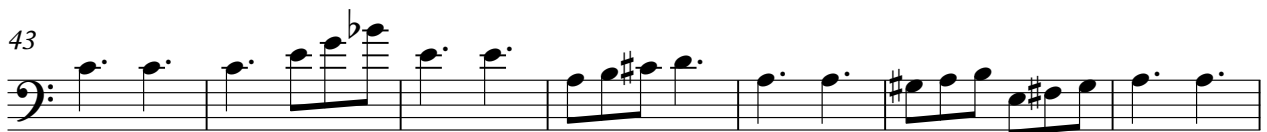
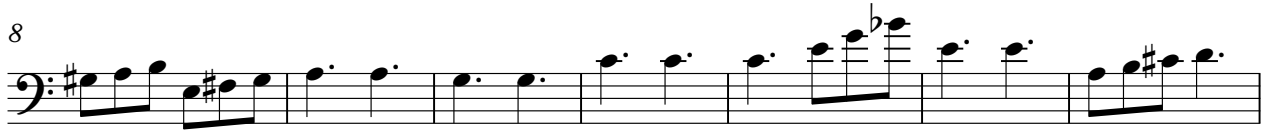
112



Brassens - La Messe Au Pendu

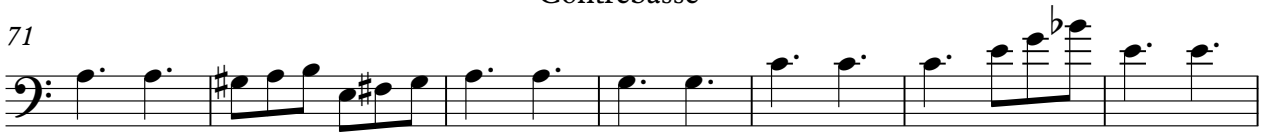
Contrebasse

♩ = 150,000000
Contrebasse



V.S.

71



78



85



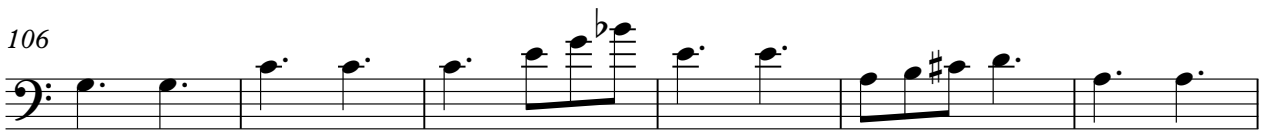
92



99



106



112

