

Brassens - La Non Demande En Mariage

♩ = 138,000198
Mélodie

Mélodie

Guitare

♩ = 138,000198
Contrebasse

4

Mélodie

Guitare

Contrebasse

7

Mélodie

Guitare

Contrebasse

9

Mélocdie

Guitare

Contrebasse

12

Mélocdie

Guitare

Contrebasse

14

Mélocdie

Guitare

Contrebasse

16

Mélocdie

Guitare

Contrebasse

18

Mélocdie

Guitare

Contrebasse

21

Mélocdie

Guitare

Contrebasse

24

Mélocdie

Guitare

Contrebasse

This system contains measures 24 and 25. The melody (Mélodie) starts with a whole rest in measure 24 and begins in measure 25 with a quarter note G4, followed by eighth notes A4, B4, and C5, ending with a triplet of eighth notes B4, A4, and G4. The guitar (Guitare) part features a steady eighth-note accompaniment with a melodic line in the upper register. The bass (Contrebasse) part plays a simple eighth-note bass line.

26

Mélocdie

Guitare

Contrebasse

This system contains measures 26, 27, and 28. The melody (Mélodie) starts with a quarter note G4, followed by eighth notes A4, B4, and C5, then a half note D5, and ends with a quarter rest. The guitar (Guitare) part continues with its eighth-note accompaniment and melodic line. The bass (Contrebasse) part maintains its eighth-note bass line.

29

Mélocdie

Guitare

Contrebasse

This system contains measures 29, 30, and 31. The melody (Mélodie) starts with a quarter rest, followed by eighth notes G4, A4, and B4, then a quarter note C5, and ends with a half note D5. The guitar (Guitare) part continues with its eighth-note accompaniment and melodic line. The bass (Contrebasse) part maintains its eighth-note bass line.

31

Mélocdie

Guitare

Contrebasse

33

Mélocdie

Guitare

Contrebasse

36

Mélocdie

Guitare

Contrebasse

38

Mélocdie

Guitare

Contrebasse

40

Mélocdie

Guitare

Contrebasse

42

Mélocdie

Guitare

Contrebasse

45

Mélocdie

Guitare

Contrebasse

48

Mélocdie

Guitare

Contrebasse

50

Mélocdie

Guitare

Contrebasse

53

Mélocdie

Guitare

Contrebasse

55

Mélocdie

Guitare

Contrebasse

57

Mélocdie

Guitare

Contrebasse

60

Mélocdie

Guitare

Contrebasse

This system contains measures 60 and 61. The Melodie part starts with a whole rest in measure 60 and begins a sequence of eighth notes in measure 61. The Guitare part features a rhythmic pattern of eighth notes with chords in both measures. The Contrebasse part plays a simple bass line with eighth notes and rests.

62

Mélocdie

Guitare

Contrebasse

This system contains measures 62 and 63. The Melodie part continues with eighth notes in measure 62 and then rests in measure 63. The Guitare part maintains its rhythmic accompaniment. The Contrebasse part continues with its bass line.

64

Mélocdie

Guitare

Contrebasse

This system contains measures 64 and 65. The Melodie part plays eighth notes in measure 64 and has a long note with a slur in measure 65. The Guitare part continues with its accompaniment. The Contrebasse part continues with its bass line.

66

Mélocdie

Guitare

Contrebasse

This system of music covers measures 66 to 68. The melody line (Mélodie) starts with a half note G4, followed by quarter notes A4, B4, and C5, then a half note B4. The guitar part (Guitare) features a rhythmic pattern of eighth notes with a slash, followed by eighth notes G4, A4, B4, and C5. The bass part (Contrebasse) consists of quarter notes G2, A2, B2, and C3.

69

Mélocdie

Guitare

Contrebasse

This system of music covers measures 69 to 71. The melody line (Mélodie) begins with a half note G4, followed by quarter notes A4, B4, and C5, then a half note B4. The guitar part (Guitare) continues with eighth notes G4, A4, B4, and C5. The bass part (Contrebasse) continues with quarter notes G2, A2, B2, and C3.

72

Mélocdie

Guitare

Contrebasse

This system of music covers measures 72 to 74. The melody line (Mélodie) starts with a half note G4, followed by a quarter rest, then a triplet of eighth notes A4, B4, and C5. The guitar part (Guitare) features a rhythmic pattern of eighth notes with a slash, followed by eighth notes G4, A4, B4, and C5. The bass part (Contrebasse) continues with quarter notes G2, A2, B2, and C3.

74

Mélocdie

Guitare

Contrebasse

77

Mélocdie

Guitare

Contrebasse

79

Mélocdie

Guitare

Contrebasse

81

Mélocdie

Guitare

Contrebasse

84

Mélocdie

Guitare

Contrebasse

86

Mélocdie

Guitare

Contrebasse

88

Mélocdie

Guitare

Contrebasse

90

Mélocdie

Guitare

Contrebasse

93

Mélocdie

Guitare

Contrebasse

96

Mélocdie

Guitare

Contrebasse

98

Mélocdie

Guitare

Contrebasse

101

Mélocdie

Guitare

Contrebasse

103

Mélocdie

Guitare

Contrebasse

105

Mélocdie

Guitare

Contrebasse

108

Mélocdie

Guitare

Contrebasse

110

Mélocdie

Guitare

Contrebasse

112

Mélocdie

Guitare

Contrebasse

114

Mélocdie

Guitare

Contrebasse

117

Mélocdie

Guitare

Contrebasse

120

Mélocdie

Guitare

Contrebasse

122

Mélocdie

Guitare

Contrebasse

125

Mélocdie

Guitare

Contrebasse

This system contains measures 125 and 126. The Melodie part (treble clef) starts with a quarter rest, followed by quarter notes G4, A4, B4, C5, and a half note D5. The Guitare part (treble clef) features a rhythmic pattern of eighth notes with a slash, quarter notes, and eighth notes with a slash, all under a slur. The Contrebasse part (bass clef) has a simple bass line of quarter notes G2, F2, E2, D2, and C2.

127

Mélocdie

Guitare

Contrebasse

This system contains measures 127 and 128. The Melodie part (treble clef) continues with quarter notes C5, B4, A4, G4, and a half note F4. The Guitare part (treble clef) maintains the rhythmic pattern from the previous system. The Contrebasse part (bass clef) continues with quarter notes B1, A1, G1, F1, and E1.

129

Mélocdie

Guitare

Contrebasse

This system contains measures 129 and 130. The Melodie part (treble clef) has a half note G4, a half note F4, and a triplet of quarter notes E4, D4, and C4. The Guitare part (treble clef) continues with the rhythmic pattern. The Contrebasse part (bass clef) continues with quarter notes D1, C1, B0, A0, and G0.

132

Mélocdie

Guitare

Contrebasse

This system contains measures 132 and 133. The melody (Mélodie) starts with a whole rest in measure 132, followed by a quarter note G4, an eighth note A4, and a quarter note B4 in measure 133. The guitar (Guitare) plays a rhythmic pattern of eighth notes with chords in both measures. The double bass (Contrebasse) plays a simple bass line with quarter notes and rests.

134

Mélocdie

Guitare

Contrebasse

This system contains measures 134 and 135. The melody (Mélodie) has a quarter note G4 in measure 134, followed by a quarter note A4 and a quarter note B4 in measure 135. The guitar (Guitare) continues with its rhythmic accompaniment. The double bass (Contrebasse) maintains its bass line.

136

Mélocdie

Guitare

Contrebasse

This system contains measures 136 and 137. The melody (Mélodie) has a quarter note G4 in measure 136, followed by a half note A4 in measure 137. The guitar (Guitare) continues with its rhythmic accompaniment. The double bass (Contrebasse) maintains its bass line.

138

Mélocdie

Guitare

Contrebasse

141

Mélocdie

Guitare

Contrebasse

144

Mélocdie

Guitare

Contrebasse

146

Mélocdie

Guitare

Contrebasse

148

Mélocdie

Guitare

Contrebasse

150

Guitare

Contrebasse

Brassens - La Non Demande En Mariage

Mélodie

♩ = 138,000198
Mélodie 4

9

15

20

26

31

37

42

48

54

Copyright © 1998, Gïrald BLONCOURT

Touë droits réservés

V.S.

60



65



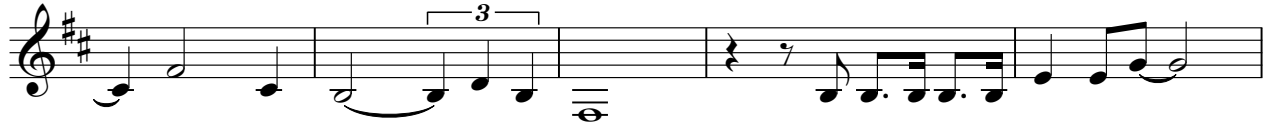
71



77



82



87



92



98



103



109



114



120



126



132



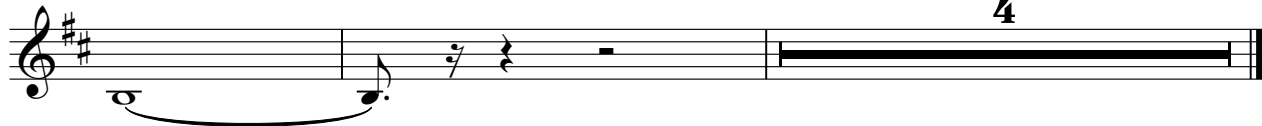
137



143



147



Brassens - La Non Demande En Mariage

Guitare

♩ = 138,000198
Guitare

4

7

10

13

16

19

22

25

28

Copyright © 1998, Ghislain BLONCOURT
Tous droits réservés

V.S.

Musical score for guitar, page 2, measures 31-58. The score is written in treble clef with a key signature of two sharps (F# and C#). The music features a complex rhythmic pattern, likely 12/8 time, with a mix of eighth and sixteenth notes. The melody is primarily in the upper register, while the accompaniment consists of chords and arpeggiated figures in the lower register. The score is divided into systems of two staves each, with measure numbers 31, 34, 37, 40, 43, 46, 49, 52, 55, and 58 marking the beginning of each system. The notation includes various musical symbols such as beams, slurs, and dynamic markings.

Musical score for guitar, measures 61-88. The score is written in treble clef with a key signature of two sharps (F# and C#). The music features a complex rhythmic pattern with frequent sixteenth notes and chords. The notation includes various articulations such as slurs, accents, and dynamic markings. The piece concludes with a double bar line and the instruction 'V.S.' (Vivace) at the end of the final measure.

V.S.

Musical score for guitar, measures 91-118. The score is written in treble clef with a key signature of two sharps (F# and C#). The music consists of a single melodic line with a complex, rhythmic accompaniment. The melody is characterized by eighth and sixteenth notes, often beamed together, and includes various articulations such as slurs and accents. The accompaniment features a steady eighth-note pattern with occasional rests and dynamic markings. The score is divided into systems, with measure numbers 91, 94, 97, 100, 103, 106, 109, 112, 115, and 118 marking the beginning of each system. The notation includes stems, beams, slurs, and various note heads, all rendered in black ink on a white background.

121

124

127

130

133

136

139

142

145

148

V.S.

6

Guitare

150

The image shows a musical score for guitar, labeled 'Guitare' and numbered '6'. The score consists of two staves. The first staff is in treble clef with a key signature of one sharp (F#) and a common time signature. It begins at measure 150, marked with the number '150'. The melody in the first staff features a series of eighth notes with slurs, followed by a quarter note, and then a half note. The second staff is in bass clef and contains a rhythmic accompaniment of eighth notes, some with slurs, and a final measure with a whole note chord. The piece concludes with a double bar line.

Contrebasse

Brassens - La Non Demande En Mariage

♩ = 138,000198

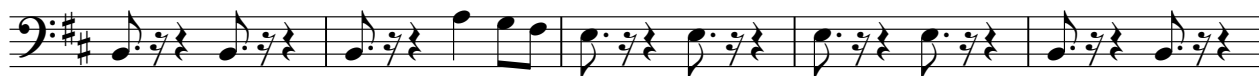
Contrebasse



6



11



16



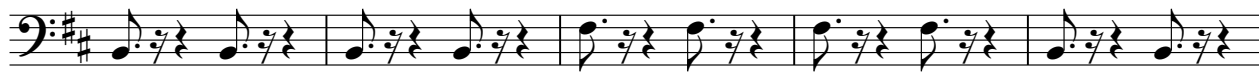
21



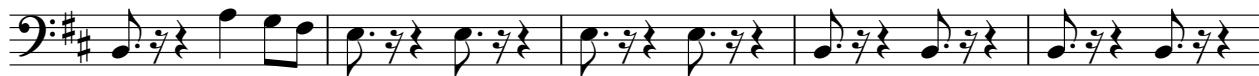
26



31



36



41



46



51



56



61



66



71



76



81



86



91



96



101



106



111



116



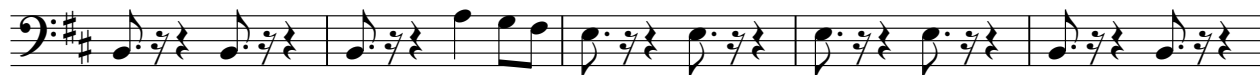
121



126



131



136



141



146



V.S.

149

