

# Brassens - Le Grand CheNe 2

$\text{♩} = 161,200195$

Kora

Electric Bass

6

Melodie

Kora

E. Bass

11

Melodie

Kora

E. Bass

16

Melodie

Kora

E. Bass

21

Melodie

Kora

E. Bass

26

Melodie

Kora

E. Bass

31

Melodie

Kora

E. Bass

36

Melodie

Kora

E. Bass

41

Melodie

Kora

E. Bass

This system contains measures 41 through 45. The Melodie staff (treble clef) features a sequence of notes: G4 (quarter), A4 (quarter), B4 (quarter), C5 (quarter), B4 (quarter), A4 (quarter), G4 (quarter), F#4 (quarter), E4 (half). The Kora staff (treble clef) provides accompaniment with chords and single notes. The E. Bass staff (bass clef) plays a steady bass line with notes: G3 (quarter), F#3 (quarter), E4 (quarter), D4 (quarter), C4 (quarter), B3 (quarter), A3 (quarter), G3 (quarter), F#3 (quarter), E4 (half).

46

Melodie

Kora

E. Bass

This system contains measures 46 through 50. The Melodie staff (treble clef) continues with notes: D4 (quarter), C4 (quarter), B3 (quarter), A3 (quarter), G3 (quarter), F#3 (quarter), E4 (quarter), D4 (quarter), C4 (quarter), B3 (quarter), A3 (quarter), G3 (quarter), F#3 (quarter), E4 (half). The Kora staff (treble clef) continues with accompaniment. The E. Bass staff (bass clef) continues with notes: G3 (quarter), F#3 (quarter), E4 (quarter), D4 (quarter), C4 (quarter), B3 (quarter), A3 (quarter), G3 (quarter), F#3 (quarter), E4 (half).

51

Melodie

Kora

E. Bass

This system contains measures 51 through 55. The Melodie staff (treble clef) features notes: G4 (quarter), A4 (quarter), B4 (quarter), C5 (quarter), B4 (quarter), A4 (quarter), G4 (quarter), F#4 (quarter), E4 (half). The Kora staff (treble clef) provides accompaniment. The E. Bass staff (bass clef) plays a steady bass line with notes: G3 (quarter), F#3 (quarter), E4 (quarter), D4 (quarter), C4 (quarter), B3 (quarter), A3 (quarter), G3 (quarter), F#3 (quarter), E4 (half).

56

Melodie

Kora

E. Bass

This system contains measures 56 through 60. The Melodie staff (treble clef) features notes: G4 (quarter), A4 (quarter), B4 (quarter), C5 (quarter), B4 (quarter), A4 (quarter), G4 (quarter), F#4 (quarter), E4 (half). The Kora staff (treble clef) provides accompaniment. The E. Bass staff (bass clef) plays a steady bass line with notes: G3 (quarter), F#3 (quarter), E4 (quarter), D4 (quarter), C4 (quarter), B3 (quarter), A3 (quarter), G3 (quarter), F#3 (quarter), E4 (half).

61

Melodie

Kora

E. Bass

66

Melodie

Kora

E. Bass

71

Melodie

Kora

E. Bass

76

Melodie

Kora

E. Bass

81

Melodie

Kora

E. Bass

86

Melodie

Kora

E. Bass

91

Melodie

Kora

E. Bass

96

Melodie

Kora

E. Bass

101

Melodie

Kora

E. Bass

106

Melodie

Kora

E. Bass

111

Melodie

Kora

E. Bass

116

Melodie

Kora

E. Bass

121

Melodie

Kora

E. Bass

126

Melodie

Kora

E. Bass

131

Melodie

Kora

E. Bass

136

Melodie

Kora

E. Bass

141

Melodie

Kora

E. Bass

146

Melodie

Kora

E. Bass

151

Melodie

Kora

E. Bass

156

Melodie

Kora

E. Bass



161

Melodie

Kora

E. Bass

166

Melodie

Kora

E. Bass

171

Melodie

Kora

E. Bass

176

Melodie

Kora

E. Bass

181

Melodie

Kora

E. Bass

186

Melodie

Kora

E. Bass

191

Melodie

Kora

E. Bass

196

Melodie

Kora

E. Bass

201

Melodie

Kora

E. Bass

206

Melodie

Kora

E. Bass

211

Melodie

Kora

E. Bass

216

Melodie

Kora

E. Bass

221

Melodie

Kora

E. Bass

226

Melodie

Kora

E. Bass

231

Melodie

Kora

E. Bass

234

Melodie

Kora

E. Bass

# Brassens - Le Grand CheNe 2

## Melodie

♩ = 161,200195

8

14

20

26

32

38

44

50

57

63

V.S.

69



75



81



87



94



100



106



112



118



124

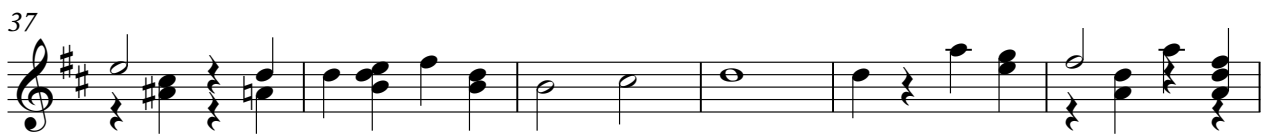
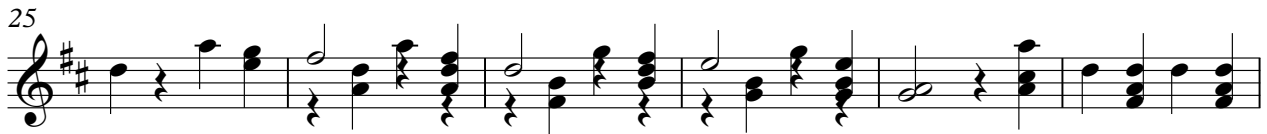








♩ = 161,200195



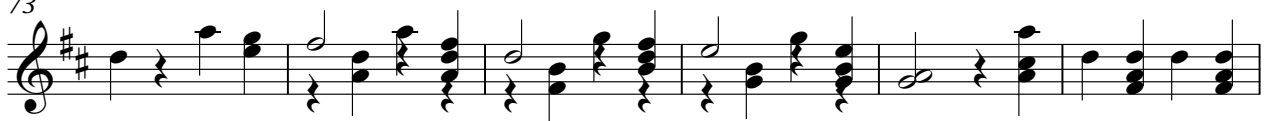
61



67



73



79



85



91



97



103



109



115



121

127

133

139

145

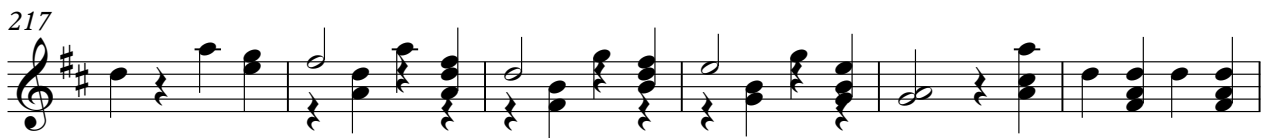
151

157

163

169

175



Electric Bass

Brassens - Le Grand CheNe 2

♩ = 161,200195

7

13

19

25

31

37

43

49

55

V.S.

61



67



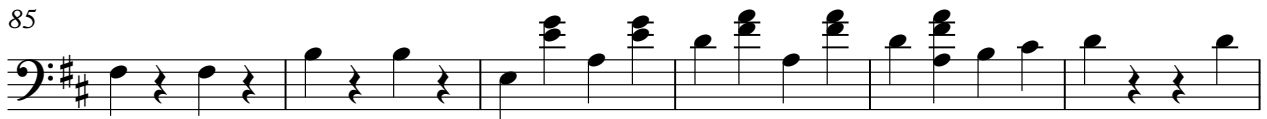
73



79



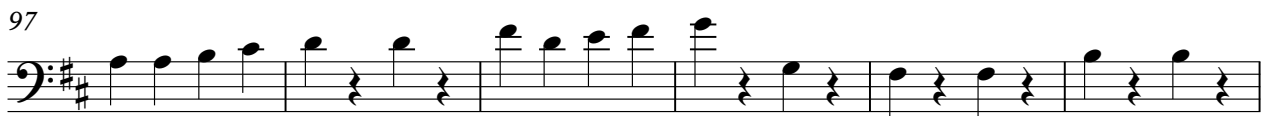
85



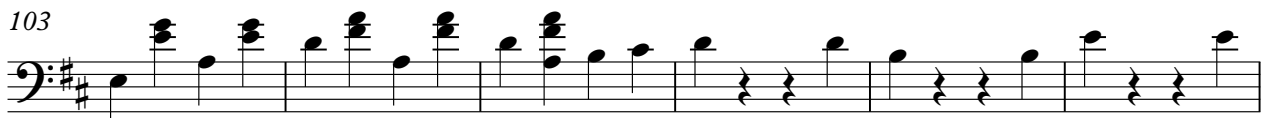
91



97



103



109



115



Electric Bass

121

Musical notation for measure 121, bass clef, key signature of two sharps (F# and C#). The measure contains six eighth notes: F#2, C#3, F#3, C#3, F#3, C#3.

127

Musical notation for measure 127, bass clef, key signature of two sharps. The measure contains six eighth notes: F#2, C#3, F#3, C#3, F#3, C#3.

133

Musical notation for measure 133, bass clef, key signature of two sharps. The measure contains six eighth notes: F#2, C#3, F#3, C#3, F#3, C#3.

139

Musical notation for measure 139, bass clef, key signature of two sharps. The measure contains six eighth notes: F#2, C#3, F#3, C#3, F#3, C#3.

145

Musical notation for measure 145, bass clef, key signature of two sharps. The measure contains six eighth notes: F#2, C#3, F#3, C#3, F#3, C#3.

151

Musical notation for measure 151, bass clef, key signature of two sharps. The measure contains six eighth notes: F#2, C#3, F#3, C#3, F#3, C#3.

157

Musical notation for measure 157, bass clef, key signature of two sharps. The measure contains six eighth notes: F#2, C#3, F#3, C#3, F#3, C#3.

163

Musical notation for measure 163, bass clef, key signature of two sharps. The measure contains six eighth notes: F#2, C#3, F#3, C#3, F#3, C#3.

169

Musical notation for measure 169, bass clef, key signature of two sharps. The measure contains six eighth notes: F#2, C#3, F#3, C#3, F#3, C#3.

175

Musical notation for measure 175, bass clef, key signature of two sharps. The measure contains six eighth notes: F#2, C#3, F#3, C#3, F#3, C#3.

V.S.

181



187



193



199



205



211



217



223



229



233

