

Brassens - L`ePave

Mélodie

♩ = 224,000122

Mélodie

Guitare

♩ = 224,000122

Guitare

Contrebasse

♩ = 224,000122

Contrebasse

5

Mélodie

♩ = 224,000122

Mélodie

Guitare

♩ = 224,000122

Guitare

Contrebasse

♩ = 224,000122

Contrebasse

9

Mélodie

Mélodie

Guitare

Guitare

Contrebasse

Contrebasse

12

Mé lodie

Guitare

Contrebasse

15

Mé lodie

Guitare

Contrebasse

18

Mé lodie

Guitare

Contrebasse

22

Mélocdie

Guitare

Contrebasse

25

Mélocdie

Guitare

Contrebasse

28

Mélocdie

Guitare

Contrebasse

31

Mélie

Guitare

Contrebasse

35

Mélie

Guitare

Contrebasse

39

Mélie

Guitare

Contrebasse

42

Mélocdie

Guitare

Contrebasse

45

Mélocdie

Guitare

Contrebasse

49

Mélocdie

Guitare

Contrebasse

52

Mélocdie

Guitare

Contrebasse

55

Mélocdie

Guitare

Contrebasse

58

Mélocdie

Guitare

Contrebasse

62

Mélocdie

Guitare

Contrebasse

66

Mélocdie

Guitare

Contrebasse

69

Mélocdie

Guitare

Contrebasse

72

Mélocdie

Guitare

Contrebasse

76

Mélocdie

Guitare

Contrebasse

79

Mélocdie

Guitare

Contrebasse

82

Mélocdie

Guitare

Contrebasse

85

Mélocdie

Guitare

Contrebasse

89

Mélocdie

Guitare

Contrebasse

93

Mélocdie

Guitare

Contrebasse

96

Mélocdie

Guitare

Contrebasse

99

Mélocdie

Guitare

Contrebasse

103

Mélocdie

Guitare

Contrebasse

106

Mélocdie

Guitare

Contrebasse

109

Mélocdie

Guitare

Contrebasse

112

Mélocdie

Guitare

Contrebasse

116

Mélocdie

Guitare

Contrebasse

120

Mélocdie

Guitare

Contrebasse

123

Mélocdie

Guitare

Contrebasse

126

Mélocdie

Guitare

Contrebasse

130

Mélocdie

Guitare

Contrebasse

133

Mé debate

Guitare

Contrebasse

136

Mé debate

Guitare

Contrebasse

139

Mé debate

Guitare

Contrebasse

143

Mélie

Guitare

Contrebasse

147

Mélie

Guitare

Contrebasse

150

Mélie

Guitare

Contrebasse

153

Mélocdie

Guitare

Contrebasse

157

Mélocdie

Guitare

Contrebasse

160

Mélocdie

Guitare

Contrebasse

163

Mélocdie

Guitare

Contrebasse

166

Mélocdie

Guitare

Contrebasse

170

Mélocdie

Guitare

Contrebasse

174

Mélocdie

Guitare

Contrebasse

177

Mélocdie

Guitare

Contrebasse

180

Mélocdie

Guitare

Contrebasse

184

Mélie

Guitare

Contrebasse

187

Mélie

Guitare

Contrebasse

190

Mélie

Guitare

Contrebasse

193

Mélie

The Melodie part is written on a single staff in treble clef with a key signature of two sharps (F# and C#). It begins with a circled '193' above the staff. The first measure contains a half note G4, a quarter note A4, a quarter note B4, and a quarter note C5. The second measure contains a half note D5, a quarter note E5, and a quarter note F#5. The third measure contains a half note G5, a quarter rest, and a quarter note G5. The fourth measure contains a whole rest.

Guitare

The Guitare part is written on a single staff in treble clef with a key signature of two sharps. It begins with a circled '193' above the staff. The first measure contains a quarter note G4, a quarter note A4, a quarter note B4, and a quarter note C5. The second measure contains a quarter note D5, a quarter note E5, and a quarter note F#5. The third measure contains a quarter note G5, a quarter rest, and a quarter note G5. The fourth measure contains a whole rest.

Contrebasse

The Contrebasse part is written on a single staff in bass clef with a key signature of two sharps. It begins with a circled '193' above the staff. The first measure contains a quarter note G3, a quarter note A3, a quarter note B3, and a quarter note C4. The second measure contains a quarter note D4, a quarter note E4, and a quarter note F#4. The third measure contains a quarter note G4, a quarter rest, and a quarter note G4. The fourth measure contains a whole rest.

Brassens - L`ePave

Mélodie

$\text{♩} = 224,000122 \quad \text{♩} = 224,000122$

Mélodie **4** **3**

12

18

24

29

36

42

48

53

58 V.S.

65



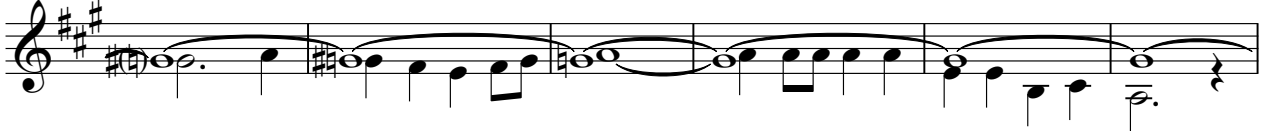
71



76



81



87



94



100



106



111



117



123



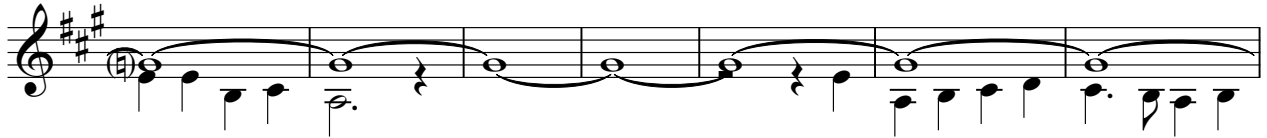
129



134



139



146



152



157



162



168



175



V.S.

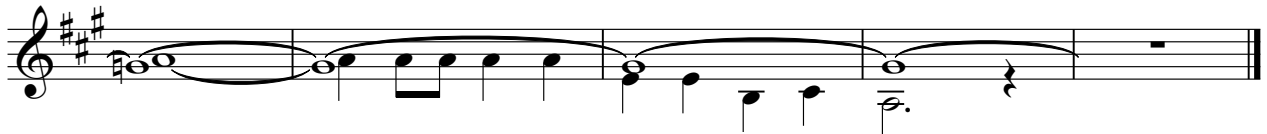
181



187



191



Brassens - L`ePave

Guitare

♩ = 224,000122

♩ = 224,000122

Guitare

6

11

16

21

26

31

36

41

46

V.S.

51

Musical notation for guitar, measures 51-55. Treble clef, key signature of two sharps (F# and C#). The melody consists of quarter notes and eighth notes, often beamed together. The bass line features a steady eighth-note accompaniment with some chords. Measure 55 ends with a sharp sign and a whole note.

56

Musical notation for guitar, measures 56-60. Treble clef, key signature of two sharps. The melody continues with quarter and eighth notes. The bass line has a consistent eighth-note pattern with occasional chords. Measure 60 ends with a sharp sign and a whole note.

61

Musical notation for guitar, measures 61-65. Treble clef, key signature of two sharps. The melody continues with quarter and eighth notes. The bass line has a consistent eighth-note pattern with occasional chords. Measure 65 ends with a sharp sign and a whole note.

66

Musical notation for guitar, measures 66-70. Treble clef, key signature of two sharps. The melody continues with quarter and eighth notes. The bass line has a consistent eighth-note pattern with occasional chords. Measure 70 ends with a sharp sign and a whole note.

71

Musical notation for guitar, measures 71-75. Treble clef, key signature of two sharps. The melody continues with quarter and eighth notes. The bass line has a consistent eighth-note pattern with occasional chords. Measure 75 ends with a sharp sign and a whole note.

76

Musical notation for guitar, measures 76-80. Treble clef, key signature of two sharps. The melody continues with quarter and eighth notes. The bass line has a consistent eighth-note pattern with occasional chords. Measure 80 ends with a sharp sign and a whole note.

81

Musical notation for guitar, measures 81-85. Treble clef, key signature of two sharps. The melody continues with quarter and eighth notes. The bass line has a consistent eighth-note pattern with occasional chords. Measure 85 ends with a sharp sign and a whole note.

86

Musical notation for guitar, measures 86-90. Treble clef, key signature of two sharps. The melody continues with quarter and eighth notes. The bass line has a consistent eighth-note pattern with occasional chords. Measure 90 ends with a sharp sign and a whole note.

91

Musical notation for guitar, measures 91-95. Treble clef, key signature of two sharps. The melody continues with quarter and eighth notes. The bass line has a consistent eighth-note pattern with occasional chords. Measure 95 ends with a sharp sign and a whole note.

96

Musical notation for guitar, measures 96-100. Treble clef, key signature of two sharps. The melody continues with quarter and eighth notes. The bass line has a consistent eighth-note pattern with occasional chords. Measure 100 ends with a sharp sign and a whole note.

101



Musical notation for measure 101, featuring a treble clef, a key signature of two sharps (F# and C#), and a 4/4 time signature. The notation includes a series of chords and melodic lines with slurs and ties.

106



Musical notation for measure 106, continuing the piece with similar chordal and melodic structures.

111



Musical notation for measure 111, showing a continuation of the musical theme.

116



Musical notation for measure 116, featuring a variety of chordal textures.

121



Musical notation for measure 121, maintaining the rhythmic and harmonic patterns.

126



Musical notation for measure 126, showing a continuation of the musical theme.

131



Musical notation for measure 131, featuring a continuation of the musical theme.

136



Musical notation for measure 136, showing a continuation of the musical theme.

141



Musical notation for measure 141, featuring a continuation of the musical theme.

146



Musical notation for measure 146, concluding the page with a continuation of the musical theme.

v.s.

151



156



161



166



171



176



181



186



191



Contrebasse

Brassens - L`ePave

♩ = 224,000122
Contrebasse

♩ = 224,000122



6



11



16



21



26



31



36



41



46



V.S.

51



56



61



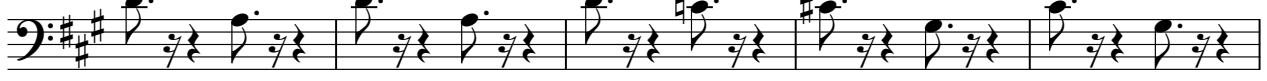
66



71



76



81



86



91



96



101



106



111



116



121



126



131



136



141



146



V.S.

151



156



161



166



171



176



181



186



191

