

Bread - Everything I Own 2

♩ = 78,000076
Drums

Drums

Percussio

Percussio

AcGuitar

Brass

Brass

El Bass

El Bass

Rhodes

Rhodes

♩ = 78,000076
Strings

Strings

Ac Piano

Ac Piano

6

AcGuitar

Ac Piano

11

Drums

AcGuitar

Brass

El Bass

Rhodes

Strings

Ac Piano

15

Drums

Percussio

AcGuitar

Brass

El Bass

Rhodes

Strings

Ac Piano



18

Drums

Percussio

AcGuitar

Brass

El Bass

Rhodes

Strings

Ac Piano

20

Drums

Percussio

AcGuitar

Brass

El Bass

Rhodes

Strings

Ac Piano

This musical score block covers measures 20 and 21. It features seven staves: Drums, Percussion, Acoustic Guitar, Brass, Electric Bass, Rhodes, and Strings. The Drums staff includes a measure rest in measure 21. The Percussion staff has a continuous eighth-note pattern. The Acoustic Guitar, Brass, and Electric Bass staves contain complex melodic and harmonic lines. The Rhodes and Strings staves provide harmonic support with chords and sustained notes. The Acoustic Piano staff has a few chords in measure 21.



22

Drums

Percussio

AcGuitar

Brass

El Bass

Rhodes

Strings

Ac Piano

This musical score block covers measures 22, 23, and 24. It features the same seven staves as the previous block. The Drums staff has a measure rest in measure 23. The Percussion staff has a continuous eighth-note pattern. The Acoustic Guitar, Brass, and Electric Bass staves contain complex melodic and harmonic lines. The Rhodes and Strings staves provide harmonic support with chords and sustained notes. The Acoustic Piano staff has a few chords in measure 24.

25

Drums

AcGuitar

Brass

El Bass

Rhodes

Strings

Ac Piano

This musical system covers measures 25 to 27. The Drums part features a consistent pattern of eighth notes. The Acoustic Guitar and Electric Bass parts play a series of chords and single notes. The Brass section has a melodic line with eighth notes. The Rhodes piano provides harmonic support with chords. The Strings section has a sustained chord. The Acoustic Piano part has a melodic line with eighth notes.



28

Drums

AcGuitar

Brass

El Bass

Rhodes

Strings

Ac Piano

This musical system covers measures 28 to 30. The Drums part continues with the same eighth note pattern. The Acoustic Guitar and Electric Bass parts play a series of chords and single notes. The Brass section has a melodic line with eighth notes. The Rhodes piano provides harmonic support with chords. The Strings section has a sustained chord. The Acoustic Piano part has a melodic line with eighth notes.

30

Drums

AcGuitar

Brass

El Bass

Rhodes

Strings

Ac Piano

This musical system covers measures 30 and 31. The Drums part features a consistent pattern of eighth notes. The AcGuitar part consists of chords and single notes. The Brass part has a melodic line with eighth notes. The El Bass part provides a steady bass line. The Rhodes part has a sparse, rhythmic accompaniment. The Strings part features a lush, sustained texture. The Ac Piano part has a complex, flowing melody.



32

Drums

AcGuitar

Brass

El Bass

Rhodes

Strings

Ac Piano

This musical system covers measures 32 and 33. The Drums part continues with a steady eighth-note pattern. The AcGuitar part features a more active melodic line. The Brass part has a melodic line with eighth notes. The El Bass part provides a steady bass line. The Rhodes part has a sparse, rhythmic accompaniment. The Strings part features a lush, sustained texture. The Ac Piano part has a complex, flowing melody.

34

Drums

AcGuitar

Brass

El Bass

Rhodes

Strings

Ac Piano



37

Drums

Percussio

AcGuitar

Brass

El Bass

Rhodes

Strings

Ac Piano

39

Drums

Percussio

AcGuitar

Brass

El Bass

Rhodes

Strings

Ac Piano

Detailed description: This block contains the musical notation for measures 39 and 40. The score is arranged in a grand staff with eight staves. The top staff is for Drums, showing a complex pattern of hits and rests. The second staff is for Percussion, featuring a steady eighth-note rhythm. The third staff is for Acoustic Guitar, with a melodic line and some double stops. The fourth staff is for Brass, showing a melodic line with some rests. The fifth staff is for Electric Bass, with a melodic line and some rests. The sixth staff is for Rhodes, with a melodic line and some rests. The seventh staff is for Strings, with a melodic line and some rests. The eighth staff is for Acoustic Piano, with a melodic line and some rests.



41

Drums

Percussio

AcGuitar

Brass

El Bass

Rhodes

Strings

Ac Piano

Detailed description: This block contains the musical notation for measures 41 and 42. The score is arranged in a grand staff with eight staves. The top staff is for Drums, showing a complex pattern of hits and rests. The second staff is for Percussion, featuring a steady eighth-note rhythm. The third staff is for Acoustic Guitar, with a melodic line and some double stops. The fourth staff is for Brass, showing a melodic line with some rests. The fifth staff is for Electric Bass, with a melodic line and some rests. The sixth staff is for Rhodes, with a melodic line and some rests. The seventh staff is for Strings, with a melodic line and some rests. The eighth staff is for Acoustic Piano, with a melodic line and some rests.

44

Drums

AcGuitar

Brass

El Bass

Rhodes

Strings

Ac Piano

This musical system covers measures 44 to 47. The Drums part features a consistent pattern of eighth notes. The Acoustic Guitar plays a series of chords and single notes. The Brass section has a melodic line with some rests. The Electric Bass provides a steady bass line. The Rhodes piano plays a melodic line with some rests. The Strings section has a sustained chord. The Acoustic Piano plays a steady eighth-note pattern.



48

Drums

AcGuitar

Brass

El Bass

Rhodes

Strings

Ac Piano

This musical system covers measures 48 to 51. The Drums part continues with the same pattern. The Acoustic Guitar plays a series of chords and single notes. The Brass section has a melodic line with some rests. The Electric Bass provides a steady bass line. The Rhodes piano plays a melodic line with some rests. The Strings section has a sustained chord. The Acoustic Piano plays a steady eighth-note pattern.

51

Drums

Percussio

AcGuitar

Brass

El Bass

Rhodes

Strings

Ac Piano



54

Drums

Percussio

AcGuitar

Brass

El Bass

Rhodes

Strings

Ac Piano

56

Drums

Percussio

AcGuitar

Brass

El Bass

Rhodes

Strings

Ac Piano



58

Drums

Percussio

AcGuitar

Brass

El Bass

Rhodes

Strings

Ac Piano

61 ♩ = 70,000237 ♩ = 60,000000 ♩ = 80,000000

Drums

Percussio

AcGuitar

Brass

El Bass

Rhodes

Strings

Ac Piano

Drums

Bread - Everything I Own 2

♩ = 78,000076
Drums

12

16

19

22

26

30

34

37

40

44

V.S.

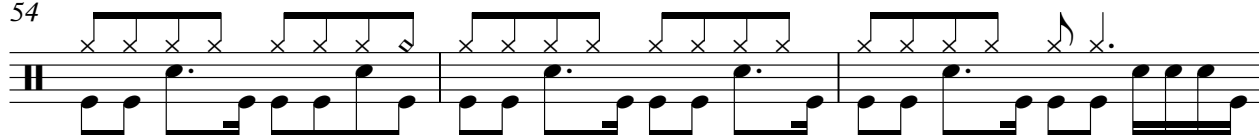
2

Drums

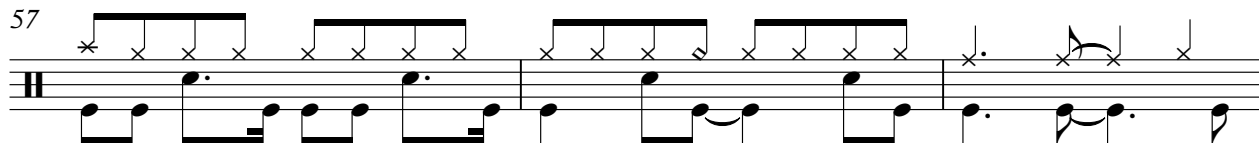
50



54



57



60

 $\text{♩} = 70,000237 \text{ } \text{♩} = 60,000000$ 

♩ = 78,000076
Percussio

16

19

21

13

37

39

41

9

53

55

57

59

♩ = 70,000237 ♩ = 66,80000000

2 2

♩ = 78,000076
AcGuitar 2

5

10

14

17

19

21

24

28

32

V.S.

35

38

40

42

46

51

54

56

58

61

$\text{♩} = 70,000237 = 60,000000 = 80,000000$

2

Bread - Everything I Own 2

Brass

♩ = 78,000076
Brass

12

15

18

20

22

25

27

29

31

33

V.S.

Brass musical score for measures 36 through 58. The score is written for a brass instrument, likely a trumpet or trombone, in a key signature of one sharp (F#). The notation includes various rhythmic values, accidentals, and articulation marks. Measures 36, 38, 40, 42, 45, 48, 51, 54, 56, and 58 are marked with measure numbers. The score features complex rhythmic patterns, including triplets and sixteenth notes, and includes dynamic markings such as *mf* and *f*. The notation is presented on a single staff with a treble clef and a key signature of one sharp.

60

Brass

3

♩ = 70,000237

♩ = 60,000000

2

$\text{♩} = 78,000076$

El Bass

12

17



21



27



32



37



41



48



53



57



V.S.

2

El Bass

61 ♯ = 70,000000 ♯ = 80,000000



♩ = 78,000076
Rhodes

12

12

16

19


22

28

32

V.S.

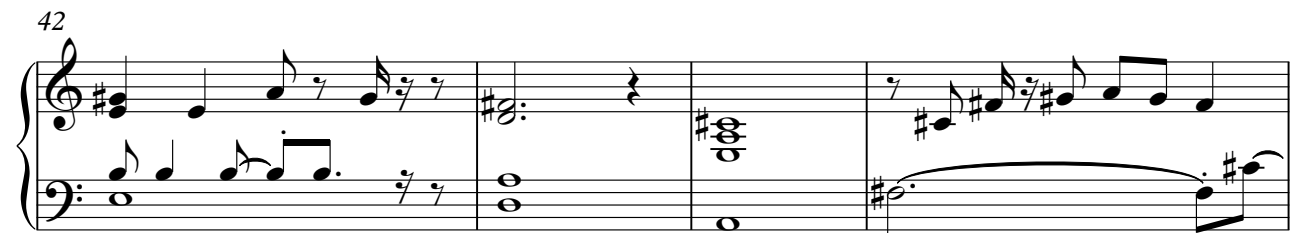
36



39



42



46



49



52



55

58

61 ♩ = 70,000237 ♩ = 60,000000 ♩ = 80,000000

Bread - Everything I Own 2

Strings

♩ = 78,000076
Strings

12

18

23

30

35

40

46

53

58

♩ = 70,000000
60,000000
50,000000
40,000000
30,000000
20,000000
10,000000
0,000000

2

Bread - Everything I Own 2

Ac Piano

♩ = 78,000076
Ac Piano 4

8

12

15

18

22

26

30

33

36

V.S.

