

Brel Jacques - L`homme De La Mancha

♩ = 140,000137

Kora

Kora

7

Kora

Kora

11

mélodie

Kora

Kora

15

mélodie

Kora

Kora

18

mélodie

Kora

Kora

22

mélodie

Kora

Kora

26

mélodie

Kora

Kora

30

mélodie

Kora

Kora

34

mélodie

Kora

Kora

39

mélodie

Kora

Kora

43

mélodie

Kora

Kora

47

mélodie

Kora

Kora

51

mélodie

Kora

Kora

55

mélodie

Kora

Kora

59

mélodie

Kora

Kora

63

mélodie

Kora

Kora

67

mélodie



Kora



Kora

Detailed description: This system covers measures 67 to 70. The melody part (top staff) begins with a quarter note G4, followed by an eighth note A4, a quarter note Bb4, and a quarter note C5. A slur covers measures 68 and 69, containing a dotted half note D5. Measure 70 starts with a quarter note E5, followed by a quarter rest and a quarter note F5. The Kora part (middle and bottom staves) features a rhythmic accompaniment with eighth and sixteenth notes, and dense chordal textures in the lower register.

71

mélodie



Kora



Kora

Detailed description: This system covers measures 71 to 74. The melody part (top staff) starts with a quarter rest, followed by quarter notes D5, E5, and F5. A slur covers measures 72 and 73, containing a dotted half note G5. Measure 74 begins with a quarter note A5, followed by a quarter note B5 and a quarter note C6. The Kora part (middle and bottom staves) continues with rhythmic accompaniment, featuring quarter notes and rests in the upper register, and dense chordal textures in the lower register.

75

mélodie



Kora



Kora

Detailed description: This system covers measures 75 to 78. The melody part (top staff) starts with a quarter note D5, followed by quarter notes E5 and F5. A slur covers measures 76 and 77, containing a dotted half note G5. Measure 78 begins with a quarter note A5, followed by a quarter note B5 and a quarter note C6. The Kora part (middle and bottom staves) continues with rhythmic accompaniment, featuring quarter notes and rests in the upper register, and dense chordal textures in the lower register.

79

mélodie



Kora



Kora

Detailed description: This system covers measures 79 to 82. The melody part (top staff) starts with a quarter note D5, followed by quarter notes E5 and F5. A slur covers measures 80 and 81, containing a dotted half note G5. Measure 82 begins with a quarter note A5, followed by a quarter note B5 and a quarter note C6. The Kora part (middle and bottom staves) continues with rhythmic accompaniment, featuring quarter notes and rests in the upper register, and dense chordal textures in the lower register.

83

mélodie

Kora

Kora

87

mélodie

Kora

Kora

91

mélodie

Kora

Kora

95

mélodie

Kora

Kora

mélodie

Brel Jacques - L`homme De La Mancha

♩ = 140,000137

11

17

24

31

38

45

49

Brel Jacques - L`homme De La Mancha

Kora

♩ = 140,000137

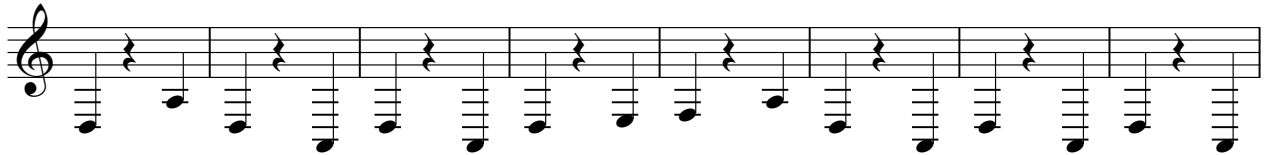


V.S.

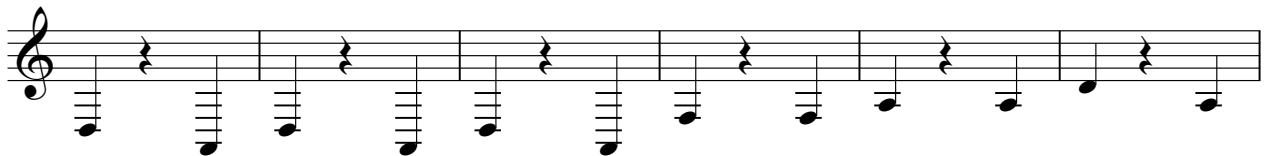
73



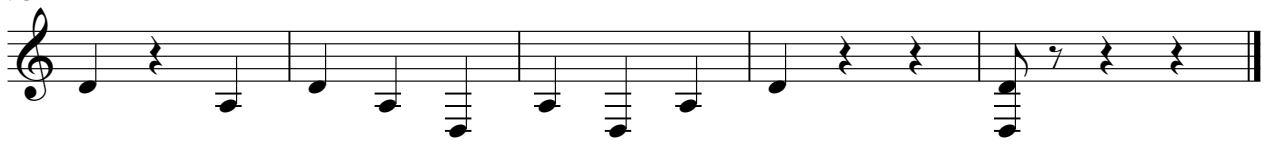
81



89



95



Brel Jacques - L`homme De La Mancha

Kora

♩ = 140,000137

4

9

14

18

22

27

31

35

40

45

Detailed description: The musical score is written for Kora in 3/4 time. It begins with a tempo marking of 140,000137 and a 4-measure rest. The first line (measures 1-8) consists of a steady eighth-note accompaniment of chords. The second line (measures 9-13) continues this pattern. The third line (measures 14-17) introduces a key signature change to one sharp (F#) and a melodic line with eighth notes. The fourth line (measures 18-21) continues the melodic line. The fifth line (measures 22-26) returns to a steady eighth-note accompaniment. The sixth line (measures 27-30) features a key signature change to two sharps (F# and C#) and a melodic line. The seventh line (measures 31-34) continues the melodic line. The eighth line (measures 35-39) continues the melodic line. The ninth line (measures 40-44) continues the melodic line. The tenth line (measures 45-48) continues the melodic line.

V.S.

50

55

60

65

70

75

80

85

90

95

Kora

97

