

# Britney Spears - Email my heart

♩ = 72,000031

Staff-3

Staff-4

Staff-2

♩ = 72,000031

Staff-5

Staff

For ev er

@TBritneySpears\_EmailMyHeart.kar  
@LENGL

@KMIDI KARAOKR FILE

Staff-1

Copyright © 1999 by NoteWorthy ArtWare, Inc.  
All Rights Reserved

4

Staff-3

Staff-4

Staff-2

Staff-5

Staff

Staff-1

Its been <sup>rs</sup>hou seems like days Since we <sup>nt</sup>a way And  
you

7

Staff-3

Staff-4

Staff-2

Staff-5

Staff

Staff-1

all I do is check <sup>To</sup>screen see if you're kay You don't swer when I Guess  
the an phone you

10

Staff-3

Staff-4

Staff-2

Staff-5

Staff

to want be left l o n e So Irm send you my heart soul And Irl  
 a o n e ing , my this is what say

Staff-1

13

Staff-3

Staff-4

Staff-2

Staff-5

Staff

Staff-1

I'm sorry, oh so sorry Can't give me one more chance To  
you

16

Staff-3

Staff-4

Staff-2

Staff-5

Staff

Staff-1

it  
make all up to you E-mail my heart say our love will never die And I,  
And

19

Staff-3

Staff-4

Staff-2

Staff-5

Staff

Staff-1

I know out there I know you're And that still you care E-mail me back say our and

22

Staff-3

Staff-4

Staff-2

Staff-5

love will stay a live For ev er .....e-

Staff

Staff-1

25

Staff-3

Staff-4

Staff-2

Staff-5

Staff

Staff-1

mail my heart wo a wo I can

28

Staff-3

Staff-4

Staff-2

Staff-5

Staff

Staff-1

see you in my mind Com on the li ght. .... And o pen ing this le tter That I've

31

Staff-3

Staff-4

Staff-2

Staff-5

Staff

Staff-1

sent hun times Herers pic of us two I look so good you ..... And  
a dred a on

Detailed description of the musical score: The score consists of six staves. Staff 3 (top) and Staff 1 (bottom) are piano accompaniment, featuring a rhythmic pattern of eighth and sixteenth notes with chords. Staff 4 is guitar accompaniment, showing chordal structures with some double bar lines. Staff 2 and Staff 5 are vocal lines, with Staff 5 having a melodic line and Staff 2 having a lower line. Staff 6 is the vocal line with lyrics: "sent hun times Herers pic of us two I look so good you ..... And". There are annotations "a dred" under "sent" and "a on" under "you". The measure number "31" is written at the top left of the first staff.



34

Staff-3

Staff-4

Staff-2

Staff-5

Staff

Staff-1

can't please you for the give me For hurt I've you put through I'm sorry, oh so sorry

37

Staff-3

Staff-4

Staff-2

Staff-5

Staff

Staff-1

you Can't give me one more chance . . . . To make it all up to y

40

Staff-3

Staff-4

Staff-2

Staff-5

Staff

Staff-1

ou E- mail heart say our love will er d i e And I, I know out there  
 my And nev you're

43

Staff-3

Staff-4

Staff-2

Staff-5

Staff

Staff-1

I me back  
 And know you st ill care (say that you still care) and our love will stay li  
 that E- mail say a

46

Staff-3

Staff-4

Staff-2

Staff-5

Staff

Staff-1

v e . . For ev er . . . e- mail my

49

Staff-3

Staff-4

Staff-2

Staff-5

Staff

Staff-1

he art I'm sor ry, oh so sor ry you Can't give me one more

52

Staff-3

Staff-4

Staff-2

Staff-5

Staff

Staff-1

cha n c e . To it make all up to E- mail heart say our my And

55

Staff-3

Staff-4

Staff-2

Staff-5

Staff

Staff-1

love will er die. . . And I, I know out there And know you st ill care  
nev yourre that

58

Staff-3

Staff-4

Staff-2

Staff-5

Staff

Staff-1

E- mail me back and our love will stay a li ve For  
say

61

Staff-3

Staff-4

Staff-2

Staff-5

ev er

Staff

Staff-1

64

Staff-3

Staff-4

Staff-2

Staff-5

Staff-1

Britney Spears - Email my heart

Staff-3

♩ = 72,000031

5

8

11

15

19

23

27

30

33

Copyright © 1999 by NoteWorthy ArtWare, Inc.  
All Rights Reserved

V.S.

36

40

44

49

53

57

61

64



Britney Spears - Email my heart

Staff-4

♩ = 72,000031

2

8

13

18

22

27

32

37

42

47

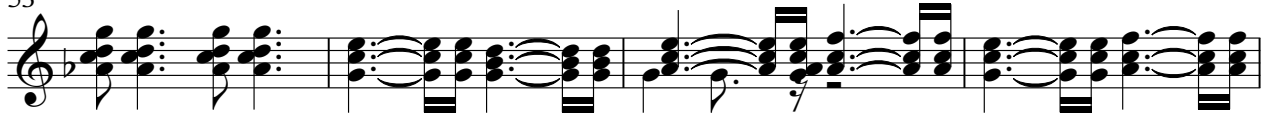
Copyright © 1999 by NoteWorthy ArtWare, Inc.  
All Rights Reserved

V.S.

2

Staff-4

53



57



62



Britney Spears - Email my heart

Staff-2

♩ = 72,000031

8

13

19

24

28

33

38

43

49

Copyright © 1999 by NoteWorthy ArtWare, Inc.  
All Rights Reserved

V.S.

2

Staff-2

54



60



63



Britney Spears - Email my heart

Staff-5

♩ = 72,000031

7

12

18

24

30

35

41

47

52

Copyright © 1999 by NoteWorthy ArtWare, Inc.  
All Rights Reserved

2

Staff-5

56



61



# Britney Spears - Email my heart

Staff

♩ = 72,000031

@LENGL

@TBritneySpears\_EmailMyHeart.kar er

For Its been hou seems days  
ev rs

6 Since we nt a way And all I do is check screen To see if you're kay You dont  
you the

9 when Guess be heart soul is I'll  
an swer I phone you want left a l o n e So I'm send you my , my And this what say  
to ing

13 I'm sor ry, oh so sor ry Can't give me more ch a n c e To make all up to you  
you it  
one

17 E- mail heart say our love will er die And I, I know out there I that still  
my And nev you're And know you care

21 E- mail back say our love will a live For ever .....e- mail my  
me and stay

26 he art wo a wo I can see you in my mind Com on the li ght..... And  
ing

30 o pen ing this le tter That I've sent hun dred times Heres pic ture of us two I look  
a a

Copyright © 1999 by NoteWorthy ArtWare, Inc.  
All Rights Reserved

V.S.

33 so good you ..... And can't please give me For hurt put through I'm sorry, so sorry

on you for you you oh

37 Can't give me more chance. .... To make all up to you E-mail heart say our

one my And

41 love will er die And I, I know out there And that you still care (say that you still care) our

nev yourre me and say

45 love will a li v e . . . For ev er . . . e- mail my he art

stay

50 I'm sorry, oh so sorry Can't give me more chance. To make all up to

one it

54 E-mail heart say our love will er die. . . And I, I know out there And know you still care

my And nev yourre that

58 E-mail me back and say our love will stay

60 a li ve For ev er



Britney Spears - Email my heart

Staff-1

♩ = 72,000031  
@KMIDI KARAOKR FILE



Copyright © 1999 by NoteWorthy ArtWare, Inc.  
All Rights Reserved

V.S.

36



Musical staff 1, measures 36-39. The staff begins with a treble clef and a key signature of one sharp (F#). The melody consists of eighth and quarter notes, with some rests. The bass line features chords and single notes, including a prominent F# chord in measure 37.

40



Musical staff 1, measures 40-43. The staff continues with a treble clef and a key signature of one sharp. The melody is primarily eighth notes, and the bass line consists of chords and single notes.

44



Musical staff 1, measures 44-48. The staff continues with a treble clef and a key signature of one sharp. There are time signature changes from 2/4 to 4/4. The melody includes quarter and eighth notes, and the bass line features chords and single notes.

49



Musical staff 1, measures 49-52. The staff continues with a treble clef and a key signature of one sharp. The melody consists of eighth and quarter notes, and the bass line features chords and single notes.

53



Musical staff 1, measures 53-56. The staff continues with a treble clef and a key signature of one sharp. The melody consists of eighth and quarter notes, and the bass line features chords and single notes.

57



Musical staff 1, measures 57-60. The staff continues with a treble clef and a key signature of one sharp. There are time signature changes from 2/4 to 4/4. The melody includes quarter and eighth notes, and the bass line features chords and single notes.

61



Musical staff 1, measures 61-63. The staff continues with a treble clef and a key signature of one sharp. The melody consists of quarter notes, and the bass line features chords and single notes.

64



Musical staff 1, measures 64-66. The staff continues with a treble clef and a key signature of one sharp. The melody consists of quarter notes, and the bass line features chords and single notes.