

26

Flute

Staff 1

Staff 2

Detailed description: This system contains measures 26 through 30. The Flute part (top staff) begins with a treble clef and a key signature of one sharp (F#). It features a melodic line with eighth and sixteenth notes, including a trill in measure 27. The piano accompaniment consists of two staves: Staff 1 (treble clef) and Staff 2 (bass clef). Both staves play chords and single notes, primarily using a 12/8 time signature. The key signature changes to one flat (Bb) in measure 29.

30

Staff 1

Staff 2

Detailed description: This system contains measures 30 through 35. The piano accompaniment continues with chords and single notes. The key signature remains one flat (Bb). The time signature is 12/8.

35

Staff 1

Staff 2

Detailed description: This system contains measures 35 through 40. The piano accompaniment continues with chords and single notes. The key signature remains one flat (Bb). The time signature is 12/8.

40

Staff 1

Staff 2

Detailed description: This system contains measures 40 through 45. The piano accompaniment continues with chords and single notes. The key signature remains one flat (Bb). The time signature is 12/8.

45

Staff 1

Staff 2

Detailed description: This system contains measures 45 through 50. The piano accompaniment continues with chords and single notes. The key signature changes to one sharp (F#) in measure 49. The time signature is 12/8.

50

Staff 1

Staff 2

Detailed description: This system contains measures 50 through 55. The piano accompaniment continues with chords and single notes. The key signature remains one sharp (F#). The time signature is 12/8.

55

Staff 1

Staff 2

60

Staff 1

Staff 2

65

Staff 1

Staff 2

70

Staff 1

Staff 2

75

Staff 1

Staff 2

80

Staff 1

Staff 2

85

Staff 1

Staff 2

90

Staff 1

Staff 2

95

Staff 1

Staff 2

100

Staff 1

Staff 2

105

Staff 1

Staff 2

110

Flute

Staff 1

Staff 2

114

Flute

Staff 1

Staff 2

117

Staff 1

Staff 2

122

Staff 1

Staff 2

127

Staff 1

Staff 2

132

Flute

Staff 1

Staff 2

137

Flute

6

6

141

Staff 1

Staff 2

146

Staff 1

Staff 2

151

Staff 1

Staff 2

155

Staff 1

Staff 2

160

Staff 1

Staff 2

165

Staff 1

Staff 2

170

Staff 1

Staff 2

175

Staff 1

Staff 2

180

Staff 1

Staff 2

185

Staff 1

Staff 2

190

Staff 1

Staff 2

194

Staff 1

Staff 2

198

Staff 1

Staff 2

202

Staff 1

Staff 2

207

Staff 1

Staff 2

212

Staff 1

Staff 2

216

Staff 1

Staff 2

220

Staff 1

Staff 2

224

Staff 1

Staff 2

228

Staff 1

Staff 2

232

Staff 1

Staff 2

236

Staff 1

Staff 2

241

Flute

244

Staff 1

Staff 2

249

Staff 1

Staff 2

255

Flute

Staff 1

Staff 2

258

Flute

Staff 1

Staff 2

Broadway - crapshot

Flute

♩ = 235,000137

24

27

29 18 16

63 18 16

97 16

116 19 6 6

139 55

195 18 28 6

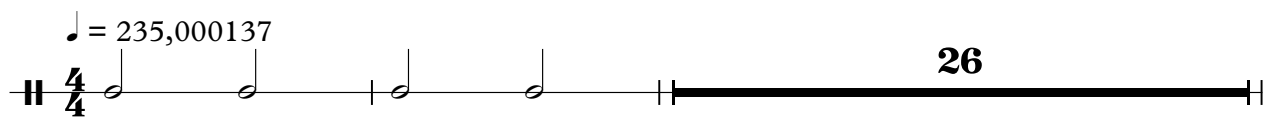
242 6

244 12

Count

Broadway - crapshot

♩ = 235,000137



26

Detailed description: A musical staff in 4/4 time. It begins with a treble clef and a 4/4 time signature. The first measure contains a quarter note, followed by two eighth notes, and another quarter note. The second measure contains two quarter notes. The staff then continues as a solid black line with a double bar line at the end. The number 26 is written above the staff.

29



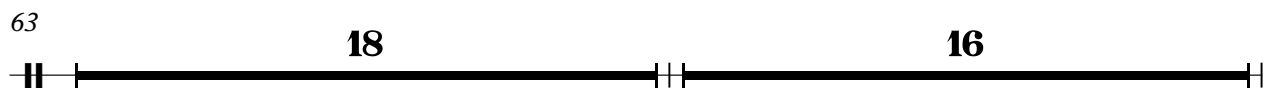
18



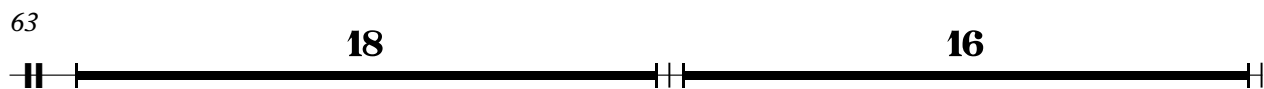
16

Detailed description: Two musical staves. The first staff starts with a double bar line, followed by a solid black line with a double bar line at the end. The number 18 is written above the staff. The second staff starts with a double bar line, followed by a solid black line with a double bar line at the end. The number 16 is written above the staff.

63



18



16

Detailed description: Two musical staves. The first staff starts with a double bar line, followed by a solid black line with a double bar line at the end. The number 18 is written above the staff. The second staff starts with a double bar line, followed by a solid black line with a double bar line at the end. The number 16 is written above the staff.

97



98



18

Detailed description: Two musical staves. The first staff starts with a double bar line, followed by a solid black line with a double bar line at the end. The number 98 is written above the staff. The second staff starts with a double bar line, followed by a solid black line with a double bar line at the end. The number 18 is written above the staff.

213



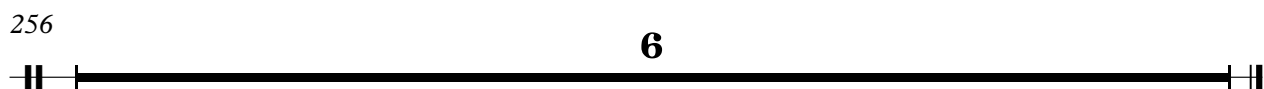
31



12

Detailed description: Two musical staves. The first staff starts with a double bar line, followed by a solid black line with a double bar line at the end. The number 31 is written above the staff. The second staff starts with a double bar line, followed by a solid black line with a double bar line at the end. The number 12 is written above the staff.

256



6

Detailed description: A single musical staff starting with a double bar line, followed by a solid black line with a double bar line at the end. The number 6 is written above the staff.

Broadway - crapshot

Staff 1

♩ = 235,000137

2

7

12

17

22

27

32

37

42

47

V.S.

53

Staff 1, measures 53-57. The key signature has two sharps (F# and C#). Measure 53 starts with a whole note chord (F#, C#, G). Measure 54 has a whole note chord (F#, C#, G) with a slur over it. Measure 55 has a whole note chord (F#, C#, G) with a slur over it. Measure 56 has a whole note chord (F#, C#, G) with a slur over it. Measure 57 has a whole note chord (F#, C#, G) with a slur over it.

58

Staff 1, measures 58-62. Measure 58 has a whole note chord (F#, C#, G) with a slur over it. Measure 59 has a whole note chord (F#, C#, G) with a slur over it. Measure 60 has a whole note chord (F#, C#, G) with a slur over it. Measure 61 has a whole note chord (F#, C#, G) with a slur over it. Measure 62 has a whole note chord (F#, C#, G) with a slur over it.

63

Staff 1, measures 63-67. Measure 63 has a whole note chord (F#, C#, G) with a slur over it. Measure 64 has a whole note chord (F#, C#, G) with a slur over it. Measure 65 has a whole note chord (F#, C#, G) with a slur over it. Measure 66 has a whole note chord (F#, C#, G) with a slur over it. Measure 67 has a whole note chord (F#, C#, G) with a slur over it.

68

Staff 1, measures 68-73. Measure 68 has a whole note chord (F#, C#, G) with a slur over it. Measure 69 has a whole note chord (F#, C#, G) with a slur over it. Measure 70 has a whole note chord (F#, C#, G) with a slur over it. Measure 71 has a whole note chord (F#, C#, G) with a slur over it. Measure 72 has a whole note chord (F#, C#, G) with a slur over it. Measure 73 has a whole note chord (F#, C#, G) with a slur over it.

74

Staff 1, measures 74-79. Measure 74 has a whole note chord (F#, C#, G) with a slur over it. Measure 75 has a whole note chord (F#, C#, G) with a slur over it. Measure 76 has a whole note chord (F#, C#, G) with a slur over it. Measure 77 has a whole note chord (F#, C#, G) with a slur over it. Measure 78 has a whole note chord (F#, C#, G) with a slur over it. Measure 79 has a whole note chord (F#, C#, G) with a slur over it.

80

Staff 1, measures 80-84. Measure 80 has a whole note chord (F#, C#, G) with a slur over it. Measure 81 has a whole note chord (F#, C#, G) with a slur over it. Measure 82 has a whole note chord (F#, C#, G) with a slur over it. Measure 83 has a whole note chord (F#, C#, G) with a slur over it. Measure 84 has a whole note chord (F#, C#, G) with a slur over it.

85

Staff 1, measures 85-89. Measure 85 has a whole note chord (F#, C#, G) with a slur over it. Measure 86 has a whole note chord (F#, C#, G) with a slur over it. Measure 87 has a whole note chord (F#, C#, G) with a slur over it. Measure 88 has a whole note chord (F#, C#, G) with a slur over it. Measure 89 has a whole note chord (F#, C#, G) with a slur over it.

90

Staff 1, measures 90-95. Measure 90 has a whole note chord (F#, C#, G) with a slur over it. Measure 91 has a whole note chord (F#, C#, G) with a slur over it. Measure 92 has a whole note chord (F#, C#, G) with a slur over it. Measure 93 has a whole note chord (F#, C#, G) with a slur over it. Measure 94 has a whole note chord (F#, C#, G) with a slur over it. Measure 95 has a whole note chord (F#, C#, G) with a slur over it.

96

Staff 1, measures 96-100. Measure 96 has a whole note chord (F#, C#, G) with a slur over it. Measure 97 has a whole note chord (F#, C#, G) with a slur over it. Measure 98 has a whole note chord (F#, C#, G) with a slur over it. Measure 99 has a whole note chord (F#, C#, G) with a slur over it. Measure 100 has a whole note chord (F#, C#, G) with a slur over it.

101

Staff 1, measures 101-105. Measure 101 has a whole note chord (F#, C#, G) with a slur over it. Measure 102 has a whole note chord (F#, C#, G) with a slur over it. Measure 103 has a whole note chord (F#, C#, G) with a slur over it. Measure 104 has a whole note chord (F#, C#, G) with a slur over it. Measure 105 has a whole note chord (F#, C#, G) with a slur over it.

106



112



116



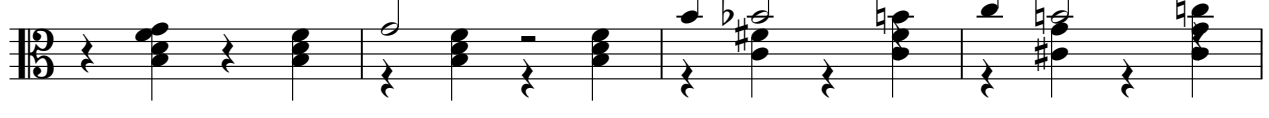
121



126



131



135



4

241

Musical staff 1, measures 241-247. Measure 241 features a triplet of eighth notes. The staff contains a sequence of chords and notes, including a double bar line in measure 242. The key signature has one flat, and the time signature is 3/8.

248

Musical staff 1, measures 248-253. Measures 248-252 contain whole rests. Measure 253 begins with a new chord. The key signature has one flat, and the time signature is 3/8.

254

Musical staff 1, measures 254-257. This section contains a series of chords and notes, including a double bar line in measure 256. The key signature has one flat, and the time signature is 3/8.

258

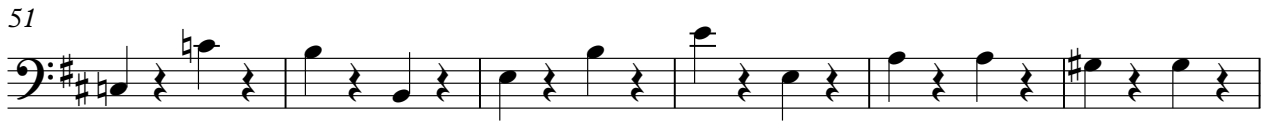
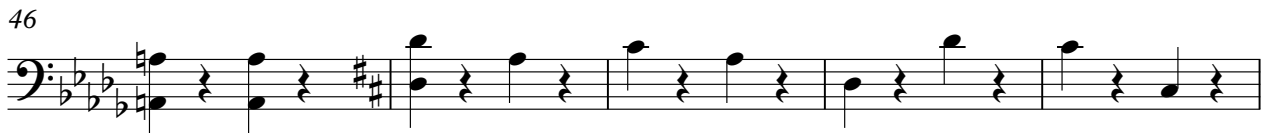
Musical staff 1, measures 258-263. This section contains a series of chords and notes, including a double bar line in measure 263. The key signature has one flat, and the time signature is 3/8.

Broadway - crapshot

Staff 2

♩ = 235,000137

2



V.S.

178



184



190



195



201



207



212



217



223



229



