

Bryan Adams - One night love affair

♩ = 120,000000

MIDI

MIDI

MIDI

MIDI

MIDI

MIDI

MIDI

MIDI

MIDI

MIDI

MIDI

8

MIDI

MIDI

MIDI

MIDI

MIDI

MIDI



11

MIDI

MIDI

MIDI



14

MIDI

MIDI

MIDI

17

MIDI

MIDI

MIDI

MIDI

MIDI

MIDI



20

MIDI

MIDI

MIDI

MIDI

MIDI

MIDI

23

MIDI

MIDI

MIDI

MIDI

MIDI

MIDI

MIDI



26

MIDI

MIDI

MIDI

MIDI

MIDI

MIDI

MIDI

30

MIDI MIDI MIDI MIDI

This system contains measures 30 through 33. It features four staves: two MIDI staves at the top, a MIDI bass staff, and a MIDI guitar staff at the bottom. The guitar staff shows a sequence of chords: a D major triad in the first measure, a D major triad with a sharp sign in the second measure, a D major triad with a sharp sign in the third measure, and a D major triad in the fourth measure. The bass staff and the two MIDI staves above it contain rhythmic patterns of eighth and quarter notes.



34

MIDI MIDI MIDI MIDI

This system contains measures 34 through 37. It features four staves: two MIDI staves at the top, a MIDI bass staff, and a MIDI guitar staff at the bottom. The guitar staff shows a sequence of chords: a D major triad in the first measure, a D major triad with a sharp sign in the second measure, a D major triad with a sharp sign in the third measure, and a D major triad in the fourth measure. The bass staff and the two MIDI staves above it contain rhythmic patterns of eighth and quarter notes.



38

MIDI MIDI MIDI MIDI

This system contains measures 38 through 41. It features four staves: two MIDI staves at the top, a MIDI bass staff, and a MIDI guitar staff at the bottom. The guitar staff shows a sequence of chords: a D major triad in the first measure, a D major triad with a sharp sign in the second measure, a D major triad with a sharp sign in the third measure, and a D major triad in the fourth measure. The bass staff and the two MIDI staves above it contain rhythmic patterns of eighth and quarter notes.

42

MIDI

MIDI

MIDI

MIDI

MIDI

MIDI

Detailed description: This system contains measures 42, 43, and 44. It features six staves. The top two staves are labeled 'MIDI' and use a drum set notation with a snare drum (H) and a kick drum (V). The third staff is a bass clef staff with a complex rhythmic pattern of eighth and sixteenth notes. The fourth staff is a bass clef staff with a simple pattern of whole notes. The fifth and sixth staves are treble clef staves; the fifth contains a melodic line with accidentals (sharps and flats) and the sixth contains a sustained chord with a sharp sign.



45

MIDI

MIDI

MIDI

MIDI

MIDI

MIDI

Detailed description: This system contains measures 45, 46, and 47. It features six staves. The top two staves are labeled 'MIDI' and use a drum set notation with a snare drum (H) and a kick drum (V). The third staff is a bass clef staff with a complex rhythmic pattern of eighth and sixteenth notes. The fourth staff is a bass clef staff with a simple pattern of whole notes. The fifth and sixth staves are treble clef staves; the fifth contains a melodic line with accidentals (sharps and flats) and the sixth contains a sustained chord with a sharp sign.

8

48

MIDI MIDI MIDI

This block contains MIDI notation for measures 48, 49, and 50. It consists of three staves. The top staff is a grand staff with a treble clef and a common time signature. It contains three measures of music, each starting with a double bar line and a repeat sign, followed by a half note. The middle staff is a grand staff with a treble clef and a common time signature, containing three measures of music, each starting with a double bar line and a repeat sign, followed by a half note. The bottom staff is a grand staff with a bass clef and a common time signature, containing three measures of music. Each measure starts with a double bar line and a repeat sign, followed by a quarter note, a quarter rest, and a quarter note, then a series of eighth notes.



51

MIDI MIDI MIDI

This block contains MIDI notation for measures 51, 52, and 53. It consists of three staves. The top staff is a grand staff with a treble clef and a common time signature. It contains three measures of music, each starting with a double bar line and a repeat sign, followed by a half note. The middle staff is a grand staff with a treble clef and a common time signature, containing three measures of music, each starting with a double bar line and a repeat sign, followed by a half note. The bottom staff is a grand staff with a bass clef and a common time signature, containing three measures of music. Each measure starts with a double bar line and a repeat sign, followed by a quarter note with a sharp sign, a quarter rest, and a quarter note, then a series of eighth notes.

54

MIDI

MIDI

MIDI

MIDI

MIDI

MIDI

MIDI

57

MIDI

MIDI

MIDI

MIDI

MIDI

MIDI

60

MIDI MIDI MIDI MIDI

This system contains four MIDI staves. The first staff has a treble clef and a common time signature. It features a sequence of quarter notes with accents: G4, A4, B4, C5, B4, A4, G4. The second staff has a treble clef and contains eighth notes: G4, A4, B4, C5, B4, A4, G4. The third staff has a treble clef and contains a series of eighth notes: G4, A4, B4, C5, B4, A4, G4. The fourth staff has a treble clef and contains a series of eighth notes: G4, A4, B4, C5, B4, A4, G4.

MIDI MIDI MIDI

This system contains three MIDI staves. The first staff has a bass clef and contains a series of eighth notes: G2, A2, B2, C3, B2, A2, G2. The second staff has a treble clef and contains a series of eighth notes: G4, A4, B4, C5, B4, A4, G4. The third staff has a treble clef and contains a series of eighth notes: G4, A4, B4, C5, B4, A4, G4.



64

MIDI MIDI MIDI

This system contains three MIDI staves. The first staff has a treble clef and a common time signature. It features a sequence of quarter notes with accents: G4, A4, B4, C5, B4, A4, G4. The second staff has a treble clef and contains eighth notes: G4, A4, B4, C5, B4, A4, G4. The third staff has a bass clef and contains a series of eighth notes: G2, A2, B2, C3, B2, A2, G2.

68

MIDI

MIDI

MIDI

MIDI

MIDI

MIDI



72

MIDI

MIDI

MIDI

MIDI

76

MIDI 1: Drum track with a steady quarter-note pattern.

MIDI 2: Melody track with eighth-note patterns.

MIDI 3: Chordal track with a complex sequence of chords.

MIDI 4: Bass track with a melodic line.

MIDI 5: Bass track with a melodic line.

MIDI 6: Piano track with a chordal accompaniment.

MIDI 7: Piano track with a melodic line.

MIDI 8: Piano track with a long note.

80

MIDI

MIDI

MIDI

MIDI

MIDI

MIDI



83

MIDI

MIDI

MIDI



86

MIDI

MIDI

MIDI

89

MIDI
MIDI
MIDI
MIDI
MIDI
MIDI



92

MIDI
MIDI
MIDI
MIDI
MIDI
MIDI

95

MIDI MIDI MIDI MIDI MIDI MIDI MIDI



98

MIDI MIDI MIDI MIDI MIDI MIDI MIDI

102

MIDI

MIDI

MIDI

MIDI

MIDI

MIDI



106

MIDI

MIDI

MIDI

MIDI

MIDI

MIDI

110

MIDI

MIDI

MIDI

MIDI

MIDI

MIDI



114

MIDI

MIDI

MIDI

MIDI

MIDI

MIDI

118

MIDI MIDI MIDI MIDI

This system contains measures 118 through 121. It features four staves: two MIDI staves with a common time signature, a MIDI bass staff, and a MIDI treble staff with a key signature of one sharp (F#). The notation includes quarter notes, eighth notes, and chords.



122

MIDI MIDI MIDI MIDI

This system contains measures 122 through 125. It features four staves: two MIDI staves with a common time signature, a MIDI bass staff, and a MIDI treble staff with a key signature of one sharp (F#). The notation includes quarter notes, eighth notes, and chords.



126

MIDI MIDI MIDI MIDI

This system contains measures 126 through 129. It features four staves: two MIDI staves with a common time signature, a MIDI bass staff, and a MIDI treble staff with a key signature of one sharp (F#). The notation includes quarter notes, eighth notes, and chords, ending with a double bar line.

♩ = 120,000000

7

13

19

25

31

37

43

49

55

61



67



73



79



85



91



97



103



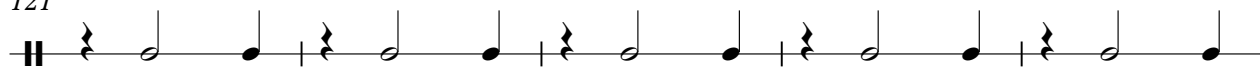
109



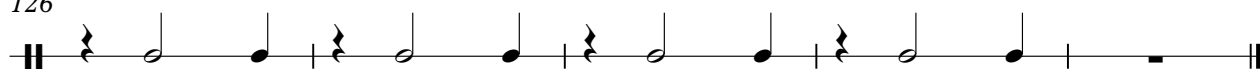
115



121



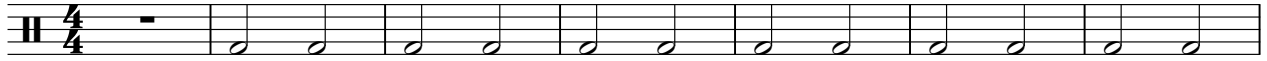
126



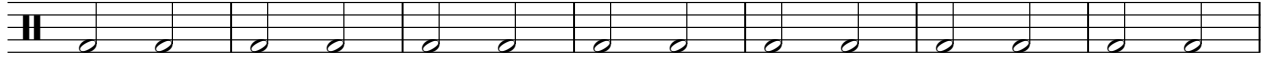
Bryan Adams - One night love affair

MIDI

♩ = 120,000000



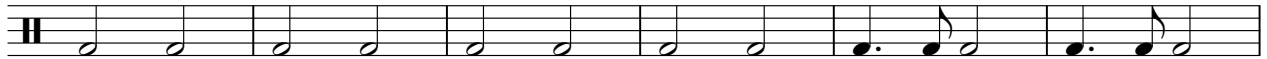
8



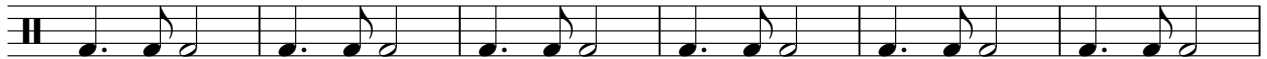
15



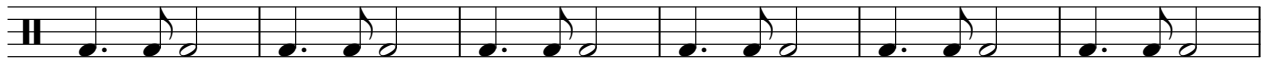
22



28



34



40



46



53



60

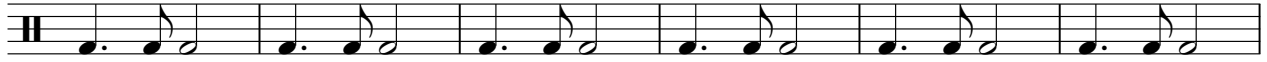


V.S.

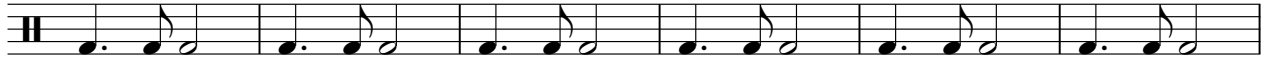
2

MIDI

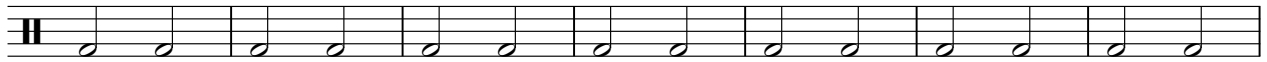
66



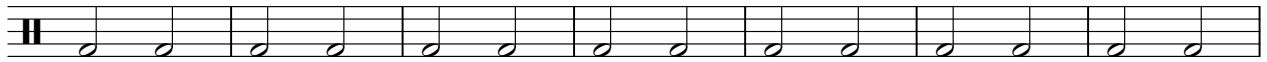
72



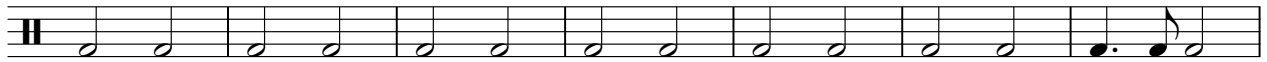
78



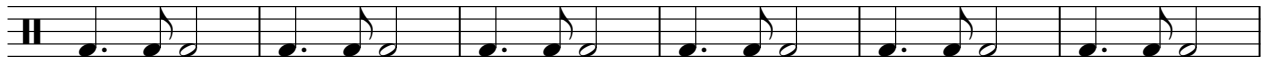
85



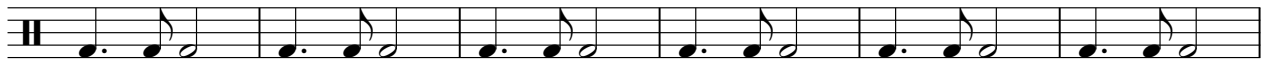
92



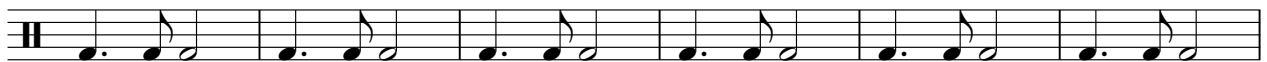
99



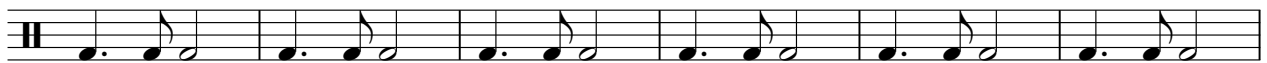
105



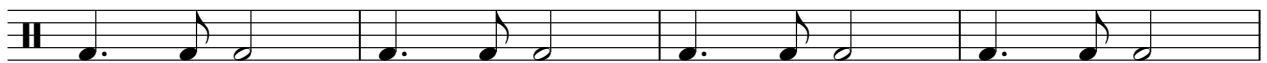
111



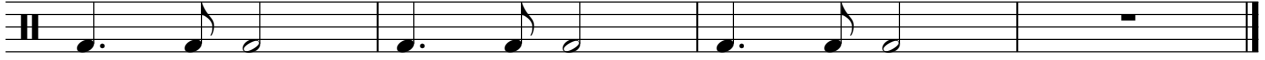
117



123



127



MIDI

Bryan Adams - One night love affair

♩ = 120,000000

4 19

26 35 7

70 7 19

98 7 7

113 17

Detailed description: The image displays a guitar score for the song "One night love affair" by Bryan Adams. The score is written in 4/4 time with a tempo of 120,000000. It consists of five systems of music. Each system begins with a double bar line and a measure number. The first system starts at measure 4 and contains two measures of music, with a measure rest of 19 measures following. The second system starts at measure 26 and contains two measures of music, with a measure rest of 7 measures following. The third system starts at measure 70 and contains two measures of music, with a measure rest of 19 measures following. The fourth system starts at measure 98 and contains two measures of music, with a measure rest of 7 measures following. The fifth system starts at measure 113 and contains one measure of music, with a measure rest of 17 measures following. The notation includes a treble clef, a 4/4 time signature, and various rhythmic values such as quarter notes, eighth notes, and rests.

♩ = 120,000000

4 18

27

34 6

71

6 18

99

6 6

113

16

Bryan Adams - One night love affair

MIDI

♩ = 120,000000



6



10



14



18



22



26



31



36



41



V.S.

45



49



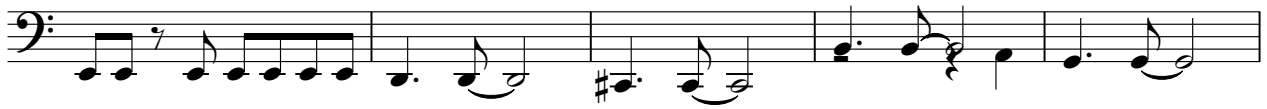
53



57



61



66



71



76



80



84



88



92



96



101



106



111



116



121



126



Bryan Adams - One night love affair

MIDI

♩ = 120,000000

5 8

Musical notation for measures 1-8 in bass clef, 4/4 time. Measure 1 contains a whole note chord with a '5' above it. Measures 2-5 contain quarter notes. Measure 6 contains a whole note chord with an '8' above it. Measure 7 contains a quarter note.

19

3 3

Musical notation for measures 19-28 in grand staff. Measures 19-23 are whole rests in both staves. Measure 24 contains a triplet of eighth notes in the bass staff and a triplet of eighth notes in the treble staff, both with a '3' above them. Measures 25-28 contain chords in the treble staff.

30

Musical notation for measures 30-38 in treble clef. Each measure contains a chord with a sharp sign (F#).

39

Musical notation for measures 39-45 in grand staff. Measures 39-41 contain chords in the treble staff. Measures 42-45 contain quarter notes in the bass staff.

46

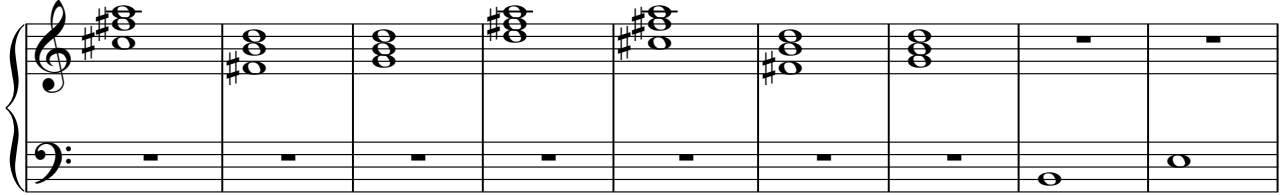
8 3

Musical notation for measures 46-51 in bass clef, 4/4 time. Measure 46 contains a whole note chord with an '8' above it. Measures 47-50 contain quarter notes. Measure 51 contains a whole note chord with a '3' above it.

62



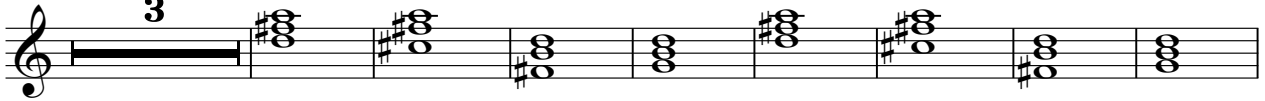
71



80



95



106



115



123



Bryan Adams - One night love affair

MIDI

♩ = 120,000000

5

9

8

20

19

42

46

8

57

19

79

8

90

93

36

♩ = 120,000000

5 8

19

16

42

8

57

16

80

8

93

33

MIDI

Bryan Adams - One night love affair

♩ = 120,000000

53



58

69

