

Caetano Veloso - E hoje

♩ = 120,000000

Song

Drums

cavaco

bass

Drums

Song

Drums

cavaco

bass

2

7

Song

Drums

cavaco

bass

9

Song

Drums

cavaco

bass

10

Song

Drums

cavaco

bass

12

Song

Drums

cavaco

bass

14

Song

Drums

cavaco

bass

16

Song

Drums

cavaco

bass

18

Song

Drums

cavaco

bass

20

Song

Drums

cavaco

bass

22

Song

Drums

cavaco

bass

23

Song

Drums

cavaco

bass

24

Song

Drums

cavaco

bass

26

Song

Drums

cavaco

bass

27

Song

Drums

cavaco

bass

28

Song

Drums

cavaco

bass

30

Song

Drums

cavaco

bass

31

Song

Drums

cavaco

bass

33

Song

Drums

cavaco

bass

34

Song

Drums

cavaco

bass

35

Song

Drums

cavaco

bass

37

Song

Drums

cavaco

bass

39

Song

Drums

cavaco

bass

41

Song

Drums

cavaco

bass

42

Song

Drums

cavaco

bass

44

Song

Drums

cavaco

bass

10

46

Song

Drums

cavaco

48

Song

Drums

cavaco

bass

50

Song

Drums

cavaco

bass

51

Song

Drums

cavaco

bass

52

Song

Drums

cavaco

bass

54

Song

Drums

cavaco

bass

55

Song

Drums

cavaco

bass

57

Song

Drums

cavaco

bass

59

Song

Drums

cavaco

bass

60

Song

Drums

cavaco

bass

62

Song

Drums

cavaco

bass

64

Song

Drums

cavaco

bass

66

Song

Drums

cavaco

bass

68

Song

Drums

cavaco

bass

70

Song

Drums

cavaco

bass

72

Song

Drums

cavaco

bass

73

Song

Drums

cavaco

bass

74

Song

Drums

cavaco

bass

16

76

Song

Drums

cavaco

bass

77

Song

Drums

cavaco

bass

78

Song

Drums

cavaco

bass

80

Song

Drums

cavaco

bass

81

Song

Drums

cavaco

bass

83

Song

Drums

cavaco

bass

84

Song

Drums

cavaco

bass

This system contains measures 84 through 87. The Song staff features a melodic line with eighth and quarter notes, including a key signature change to one flat. The Drums staff shows a consistent rhythmic pattern with 'x' marks for cymbals and stems for other drums. The cavaco staff has a complex accompaniment with many beamed eighth notes and rests. The bass staff provides a simple harmonic foundation with quarter and eighth notes.

85

Song

Drums

cavaco

bass

This system contains measures 85 and 86. The Song staff continues the melodic line with more complex rhythmic patterns. The Drums staff maintains the same rhythmic structure. The cavaco staff continues its intricate accompaniment. The bass staff follows a similar pattern to the previous system.

87

Song

Drums

cavaco

bass

This system contains measures 87 and 88. The Song staff concludes the melodic phrase. The Drums staff continues the rhythmic pattern. The cavaco staff has a more active role in measure 88. The bass staff continues its simple accompaniment.

89

Song

Drums

cavaco

bass

91

Song

Drums

cavaco

bass

92

Song

Drums

cavaco

bass

20

94

Song

Drums

cavaco

bass

96

Song

Drums

cavaco

98

Song

Drums

cavaco

bass

100

Song

Drums

cavaco

bass

101

Song

Drums

cavaco

bass

102

Song

Drums

cavaco

bass

104

Song

Drums

cavaco

bass

106

Song

Drums

cavaco

bass

Caetano Veloso - E hoje

Song

♩ = 120,000000



V.S.

36



39



43



47



50



54



57



60



63



67





104



Drums

Caetano Veloso - E hoje

♩ = 120,000000

The drum notation is presented on a single staff with a double bar line on the left. The time signature is 4/4. The tempo is marked as 120. The notation consists of a series of rhythmic patterns for the snare and bass drums. Measures 6, 7, and 19 are marked with the numbers 6, 3, and 7 respectively, indicating specific rhythmic groupings. The patterns are consistent throughout the piece, with some variations in the snare drum's role in different measures.

V.S.

Drums

21

23

25

27

29

31

33

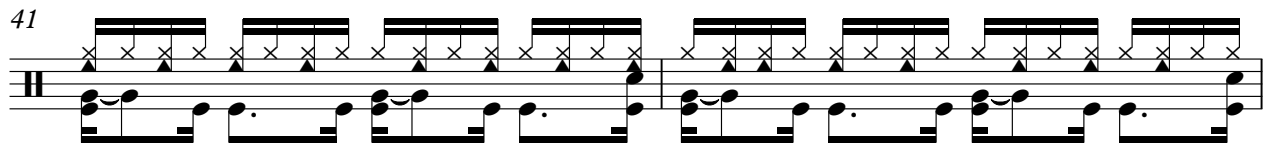
35

37

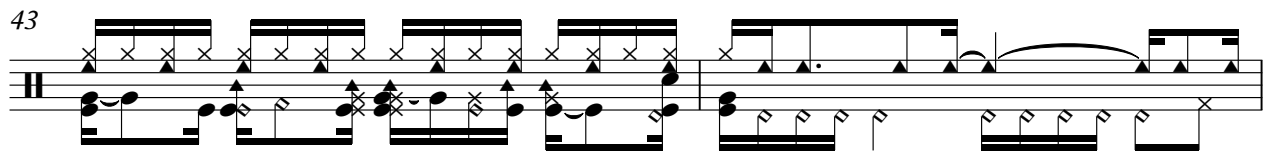
39

Drums

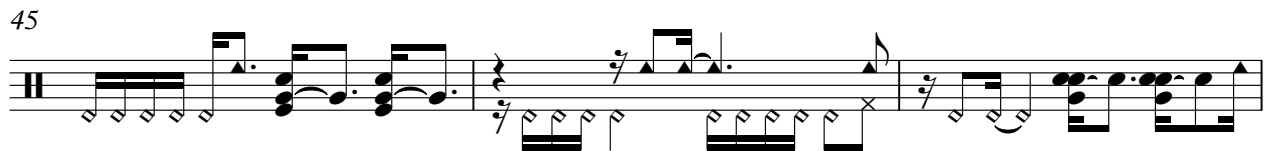
41



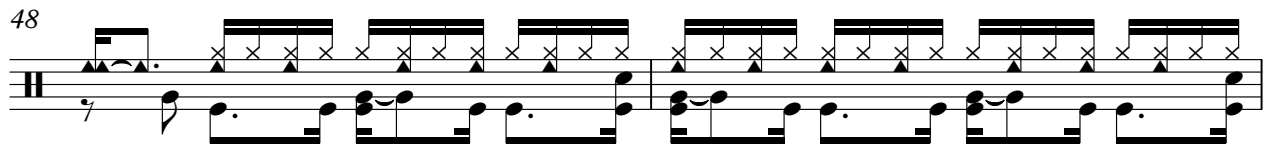
43



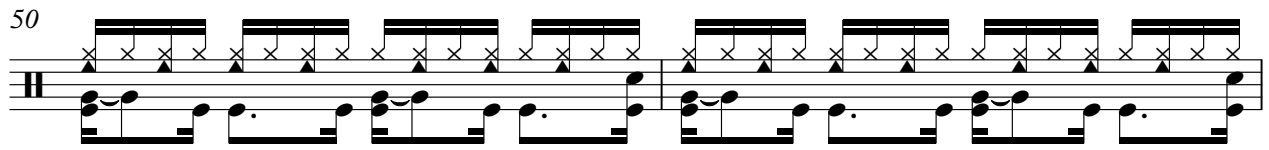
45



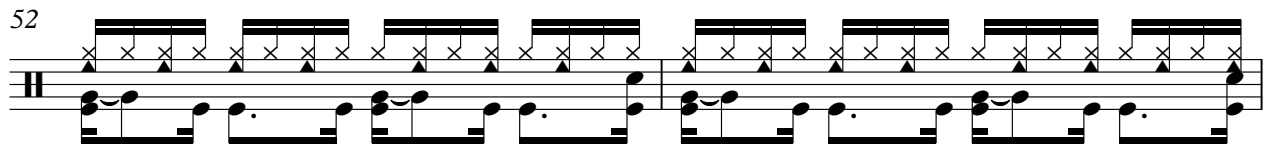
48



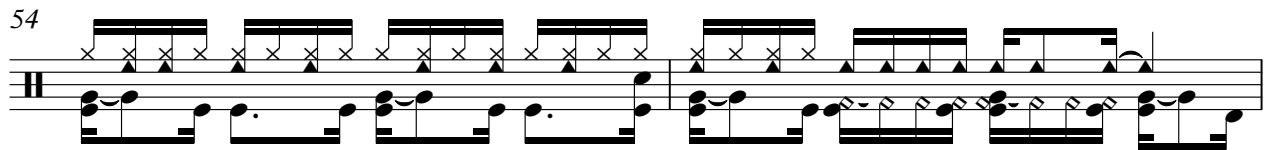
50



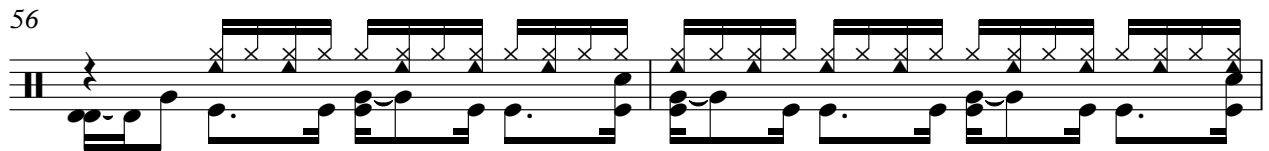
52



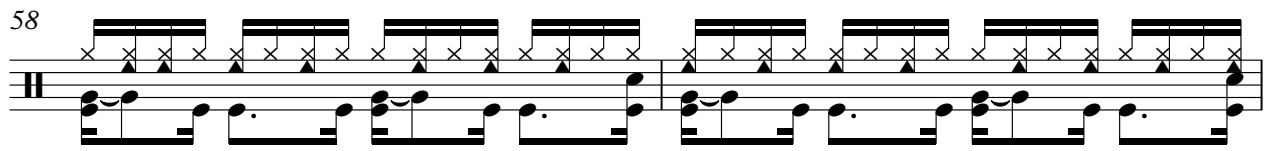
54



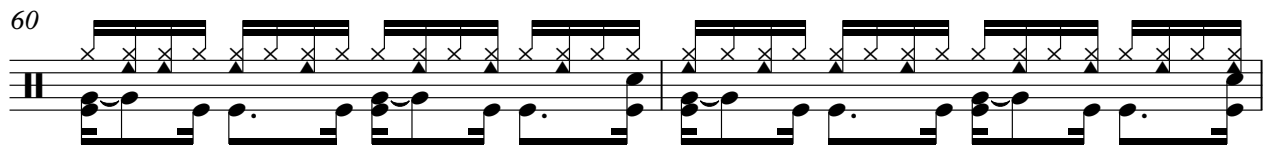
56



58



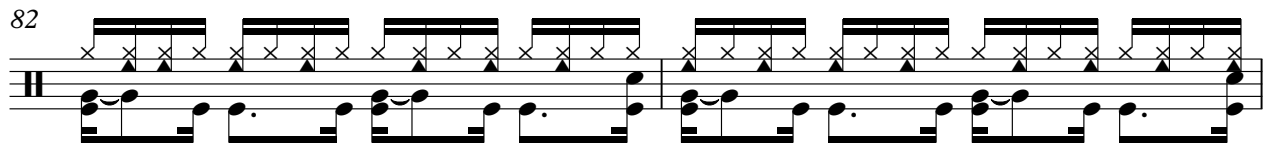
60



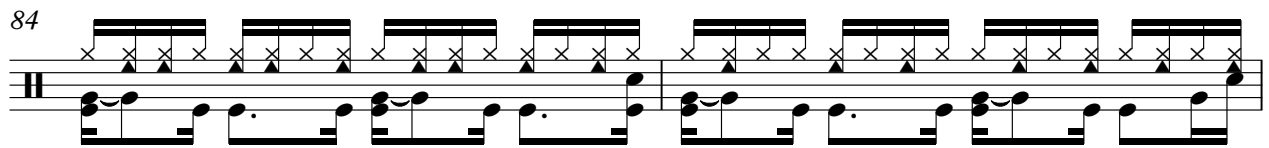
V.S.

Drum notation for measures 62 through 80. Each measure is represented by two staves: the top staff shows the drum set with 'x' marks for cymbals and triangle symbols for other drums, and the bottom staff shows the bass drum with note heads and stems. The notation is consistent across all measures, indicating a steady, repeating rhythmic pattern.

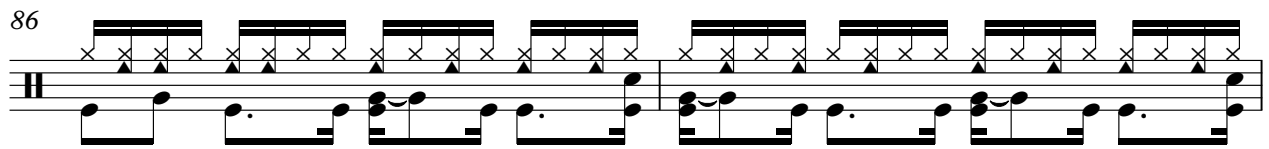
82



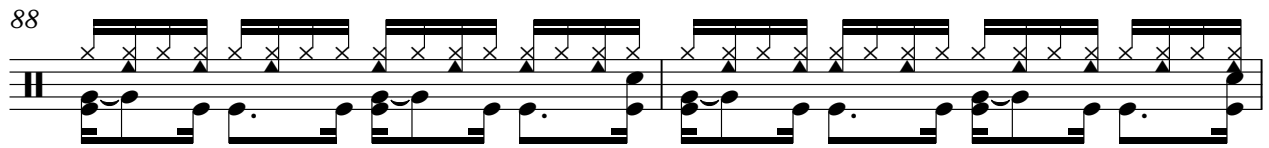
84



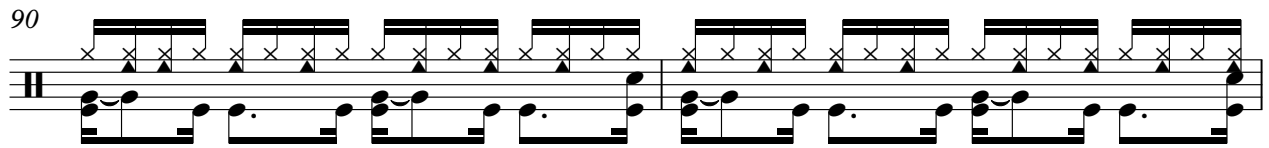
86



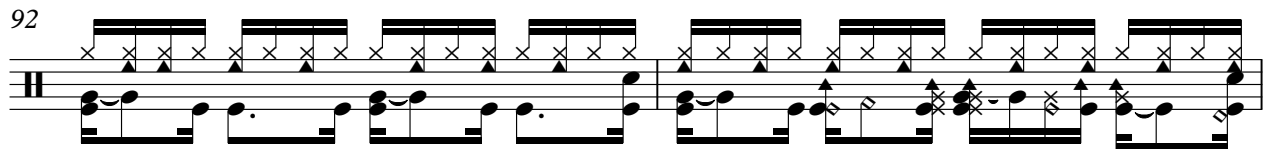
88



90



92



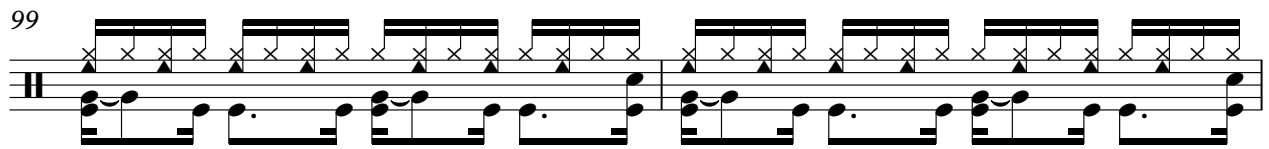
94



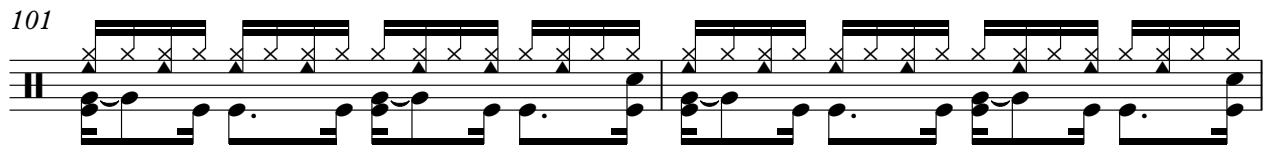
97



99



101



V.S.

6

Drums

103

Musical notation for drums, measures 103-104. The notation consists of two staves. The top staff uses a drum set notation with 'x' marks for cymbals and triangles for other drums. The bottom staff uses a standard musical notation with notes and rests.

105

Musical notation for drums, measures 105-106. The notation consists of two staves. The top staff uses a drum set notation with 'x' marks for cymbals and triangles for other drums. The bottom staff uses a standard musical notation with notes and rests.

Caetano Veloso - E hoje

cavaco

♩ = 120,000000

5

8

10

12

14

16

18

20

22

24

V.S.

47 *cavaco* 3

49

51

53

55

57

59

61

63

65

V.S.

cavaco

67

69

71

73

75

77

79

81

83

85

cavaco

5

87

89

91

93

96

98

100

102

104

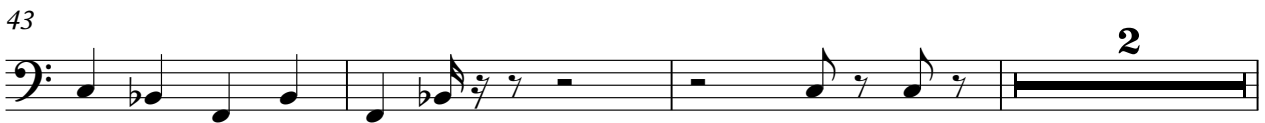
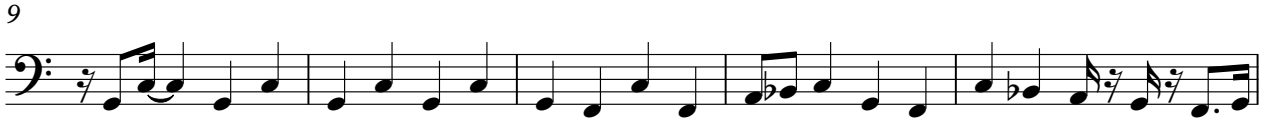
106

Caetano Veloso - E hoje

bass

♩ = 120,000000

4



2

93

A musical staff in bass clef containing five measures. The first measure has a quarter note G2, a quarter note F2, and a quarter note E2. The second measure has a quarter note D2, a quarter note C2, and a quarter rest. The third measure has a quarter rest, a quarter note B1, and a quarter note A1. The fourth measure is a whole rest, with a large number '2' positioned above it. The fifth measure has a quarter note G2, a quarter note F2, and a quarter note E2.

99

A musical staff in bass clef containing five measures. The first measure has a quarter note G2, a quarter note F2, and a quarter note E2. The second measure has a quarter note D2, a quarter note C2, and a quarter note B1. The third measure has a quarter note A1, a quarter note G1, and a quarter note F1. The fourth measure has a quarter note E1, a quarter note D1, and a quarter note C1. The fifth measure has a quarter note B1, a quarter note A1, and a quarter note G1.

103

A musical staff in bass clef containing five measures. The first measure has a quarter note G2, a quarter note F2, and a quarter note E2. The second measure has a quarter note D2, a quarter note C2, and a quarter note B1. The third measure has a quarter note A1, a quarter note G1, and a quarter note F1. The fourth measure has a quarter note E1, a quarter note D1, and a quarter note C1. The fifth measure has a quarter note B1, a quarter note A1, and a quarter note G1.