

Cars - Just What I Needed

This system of the musical score includes parts for Drums, Lead guitar, Guitar, Guitar (with fretboard diagram), Bass, Mute Guitar, Vocal, and Backing vocal. The tempo is marked as ♩ = 130,000137. The Drums part features a complex pattern with many sixteenth notes. The Guitar part shows a fretboard diagram with strings E, B, G, A, D, B and frets 0, 0, 0, 0, 0, 0. The Bass and Mute Guitar parts play a steady eighth-note rhythm. The Vocal and Backing vocal parts are currently silent.



This system continues the musical score. It includes parts for Drums, Guitar, Guitar (with fretboard diagram), Bass, Mute Guitar, Vocal, and Backing vocal. The tempo remains ♩ = 130,000137. The Drums part continues with its complex pattern. The Guitar part shows a fretboard diagram with strings E, B, G, A, D, B and frets 0, 0, 0, 0, 0. The Bass and Mute Guitar parts continue with their eighth-note rhythm. The Vocal part begins with a melodic line, and the Backing vocal part provides harmonic support.

9 $\text{♩} = 130,000137$ $\text{♩} = 130,000137$ $\text{♩} = 130,000137$ $\text{♩} = 130,000137$ $\text{♩} = 130,000137$ $\text{♩} = 130,000137$

Drums

Bass

Mute Guitar

Vocal

Backing vocal



15 $\text{♩} = 130,000137$ $\text{♩} = 130,000137$ $\text{♩} = 130,000137$ $\text{♩} = 130,000137$ $\text{♩} = 130,000137$ $\text{♩} = 130,000137$

Drums

Bass

Mute Guitar

Vocal

Backing vocal



21 $\text{♩} = 130,000137$ $\text{♩} = 130,000137$ $\text{♩} = 130,000137$ $\text{♩} = 130,000137$

Drums

Lead guitar

Guitar

Guitar

Bass

Mute Guitar

Synth

Vocal

Backing vocal

25 $\text{♩} = 130,000137$ $\text{♩} = 130,000137$ $\text{♩} = 130,000137$ $\text{♩} = 130,000137$ $\text{♩} = 130,000137$ $\text{♩} = 130,000137$ ³

Drums

Lead guitar

Guitar

Guitar

Bass

Mute Guitar

Synth

Vocal

Backing vocal

$\text{♩} = 130,000137$ $\text{♩} = 130,000137$ $\text{♩} = 130,000137$ $\text{♩} = 130,000137$ $\text{♩} = 130,000137$



29 $\text{♩} = 130,000137$ $\text{♩} = 130,000137$ $\text{♩} = 130,000137$ $\text{♩} = 130,000137$ $\text{♩} = 130,000137$ $\text{♩} = 130,000137$

Drums

Lead guitar

Guitar

Guitar

Bass

Mute Guitar

Synth

Vocal

Backing vocal

$\text{♩} = 130,000137$ $\text{♩} = 130,000137$ $\text{♩} = 130,000137$ $\text{♩} = 130,000137$ $\text{♩} = 130,000137$ $\text{♩} = 130,000137$

4

32 $\text{♩} = 130,000137$ $\text{♩} = 130,000137$ $\text{♩} = 130,000137$ $\text{♩} = 130,000137$ $\text{♩} = 130,000137$ $\text{♩} = 130,000137$

Drums

Lead guitar

Guitar

Bass

Mute Guitar

Synth



35 $\text{♩} = 130,000137$ $\text{♩} = 130,000137$ $\text{♩} = 130,000137$ $\text{♩} = 130,000137$ $\text{♩} = 130,000137$ $\text{♩} = 130,000137$ $\text{♩} = 130,000137$ $\text{♩} = 130,000137$

Drums

Lead guitar

Guitar

Bass

Mute Guitar

Synth



39 $\text{♩} = 130,000137$ $\text{♩} = 130,000137$ $\text{♩} = 130,000137$ $\text{♩} = 130,000137$ $\text{♩} = 130,000137$ $\text{♩} = 130,000137$

Drums

Bass

Mute Guitar

Vocal

Backing vocal

44 $\text{♩} = 130,000137$ $\text{♩} = 130,000137$ $\text{♩} = 130,000137$ $\text{♩} = 130,000137$ $\text{♩} = 130,000137$

Drums

Bass

Mute Guitar

Vocal

$\text{♩} = 130,000137$ $\text{♩} = 130,000137$ $\text{♩} = 130,000137$ $\text{♩} = 130,000137$ $\text{♩} = 130,000137$

Backing vocal

49 $\text{♩} = 130,000137$ $\text{♩} = 130,000137$ $\text{♩} = 130,000137$ $\text{♩} = 130,000137$ $\text{♩} = 130,000137$

Drums

Guitar

Bass

Mute Guitar

Vocal

$\text{♩} = 130,000137$ $\text{♩} = 130,000137$ $\text{♩} = 130,000137$ $\text{♩} = 130,000137$ $\text{♩} = 130,000137$

Backing vocal

54 $\text{♩} = 130,000137$ $\text{♩} = 130,000137$ $\text{♩} = 130,000137$ $\text{♩} = 130,000137$

Drums

Lead guitar

Guitar

Guitar

Bass

Mute Guitar

Synth

Vocal

$\text{♩} = 130,000137$ $\text{♩} = 130,000137$ $\text{♩} = 130,000137$ $\text{♩} = 130,000137$

Backing vocal

58 $\text{♩} = 130,000137$ $\text{♩} = 130,000137$ $\text{♩} = 130,000137$ $\text{♩} = 130,000137$

Drums

Lead guitar

Guitar

Guitar

Bass

Mute Guitar

Synth

Vocal

Backing vocal $\text{♩} = 130,000137$ $\text{♩} = 130,000137$ $\text{♩} = 130,000137$ $\text{♩} = 130,000137$



62 $\text{♩} = 130,000137$ $\text{♩} = 130,000137$ $\text{♩} = 130,000137$ $\text{♩} = 130,000137$ $\text{♩} = 130,000137$ $\text{♩} = 130,000137$

Drums

Lead guitar

Guitar

Guitar

Bass

Mute Guitar

Synth

Vocal

Backing vocal $\text{♩} = 130,000137$ $\text{♩} = 130,000137$ $\text{♩} = 130,000137$ $\text{♩} = 130,000137$ $\text{♩} = 130,000137$ $\text{♩} = 130,000137$

65 $\text{♩} = 130,000137$ $\text{♩} = 130,000137$ $\text{♩} = 130,000137$ $\text{♩} = 130,000137$ $\text{♩} = 130,000137$ $\text{♩} = 130,000137$ $\text{♩} = 130,000137$ 7

Drums

Lead guitar

Guitar
T
A
B

Bass

Mute Guitar

Synth



69 $\text{♩} = 130,000137$ $\text{♩} = 130,000137$ $\text{♩} = 130,000137$ $\text{♩} = 130,000137$ $\text{♩} = 130,000137$ $\text{♩} = 130,000137$ $\text{♩} = 130,000137$

Drums

Lead guitar

Guitar
T
A
B

Bass

Mute Guitar

Synth



73 $\text{♩} = 130,000137$ $\text{♩} = 130,000137$ $\text{♩} = 130,000137$ $\text{♩} = 130,000137$ $\text{♩} = 130,000137$ $\text{♩} = 130,000137$ $\text{♩} = 130,000137$

Drums

Lead guitar

Guitar
T
A
B

Bass

Mute Guitar

Synth

77 ♩ = 130,000137 ♩ = 130,000137 ♩ = 130,000137 ♩ = 130,000137 ♩ = 130,000137

Drums

Lead guitar

Guitar

Bass

Mute Guitar

Synth

Cars - Just What I Needed

Drums

Drum score for "Just What I Needed" by The Cars. The score is written in 4/4 time with a tempo of 130 bpm. It consists of ten systems of two staves each: a top staff for cymbals and a bottom staff for the drum kit. The notation includes various rhythmic patterns such as eighth notes, sixteenth notes, and rests, with 'x' marks indicating cymbal hits. The score is numbered 1, 3, 5, 9, 13, 17, 21, 24, 27, and 30 at the beginning of each system. The tempo is consistently marked as 130,000137.

V.S.

2 Drums

33 $\text{♩} = 130,000 \times 1370,000 \times 137 \text{ } 130,000 \times 1370,000 \times 137 \text{ } 130,000 \times 137 \text{ } = 130,000 \times 1370,000 \times 137$

37 $\text{♩} = 130,000 \times 1370,000 \times 137 \text{ } 130,000 \times 1370,000 \times 137 \text{ } \text{♩} = 130,000 \times 137 \text{ } \text{♩} = 130,000 \times 137$

41 $\text{♩} = 130,000 \times 137 \text{ } \text{♩} = 130,000 \times 137 \text{ } \text{♩} = 130,000 \times 137 \text{ } \text{♩} = 130,000 \times 137$

45 $\text{♩} = 130,000 \times 137 \text{ } \text{♩} = 130,000 \times 137 \text{ } \text{♩} = 130,000 \times 137 \text{ } \text{♩} = 130,000 \times 137$

49 $\text{♩} = 130,000 \times 137 \text{ } \text{♩} = 130,000 \times 137 \text{ } \text{♩} = 130,000 \times 137 \text{ } \text{♩} = 130,000 \times 137$

53 $\text{♩} = 130,000 \times 137 \text{ } \text{♩} = 130,000 \times 137 \text{ } \text{♩} = 130,000 \times 137$

56 $\text{♩} = 130,000 \times 137 \text{ } \text{♩} = 130,000 \times 137 \text{ } \text{♩} = 130,000 \times 137$

59 $\text{♩} = 130,000 \times 137 \text{ } \text{♩} = 130,000 \times 137 \text{ } \text{♩} = 130,000 \times 137$

62 $\text{♩} = 130,000 \times 137 \text{ } = 130,000 \times 137 \text{ } = 130,000 \times 137 \text{ } = 130,000 \times 137 \text{ } \text{♩} = 130,000 \times 137 \text{ } \text{♩} = 130,000 \times 137$

65 $\text{♩} = 130,000 \times 137 = 130,000 \times 137 \text{ } 130,000 \times 1370,000 \times 137 \text{ } 130,000 \times 1370,000 \times 137 \text{ } 130,000 \times 137 \text{ } 130,000 \times 1370,000 \times 137$

69

Drums

♩ = 130,000137 ♩ = 130,000137 ♩ = 130,000137 ♩ = 130,000137 ♩ = 130,000137 ♩ = 130,000137

73

♩ = 130,000137 ♩ = 130,000137 ♩ = 130,000137 ♩ = 130,000137 ♩ = 130,000137 ♩ = 130,000137

77

♩ = 130,000137 ♩ = 130,000137 ♩ = 130,000137 ♩ = 130,000137

Cars - Just What I Needed

Lead guitar

♩ = 130,0001370,000137 = 130,0001370,000137 = 130,0001370,000137 = 130,0001370,000137 = 130,0001370,000137 = 130,000137



10 ♩ = 130,000137 = 130,0001370,000137 ♩ = 130,000137 = 130,0001370,000137 ♩ = 130,000137 = 130,0001370,000137 ♩ = 130,000137 = 130,0001370,000137



19 ♩ = 130,000137 ♩ = 130,0001370,000137 ♩ = 130,000137 ♩ = 130,000137 ♩ = 130,000137



25 ♩ = 130,000137 ♩ = 130,000137 ♩ = 130,000137 ♩ = 130,0001370,000137 = 130,0001370,0001370,000137 = 130,0001370,0001370,000137



31 ♩ = 130,0001370,000137 ♩ = 130,0001370,000137 ♩ = 130,0001370,000137 ♩ = 130,0001370,000137 ♩ = 130,0001370,000137



35 ♩ = 130,0001370,000137 ♩ = 130,0001370,000137 ♩ = 130,0001370,000137 ♩ = 130,0001370,000137 ♩ = 130,0001370,000137 ♩ = 130,0001370,000137



40 ♩ = 130,000137 ♩ = 130,0001370,000137 ♩ = 130,0001370,000137 ♩ = 130,0001370,000137 ♩ = 130,0001370,000137 ♩ = 130,0001370,000137



49 ♩ = 130,000137 ♩ = 130,0001370,000137 ♩ = 130,0001370,000137 ♩ = 130,000137 ♩ = 130,000137



56 ♩ = 130,000137 ♩ = 130,000137 ♩ = 130,000137 ♩ = 130,000137



60 ♩ = 130,000137 ♩ = 130,000137 ♩ = 130,0001370,000137 ♩ = 130,0001370,000137



Cars - Just What I Needed

Guitar

♩ = 130,000137 ♩ = 130,000137 ♩ = 130,000137 ♩ = 130,000137 ♩ = 130,000137 ♩ = 130,000137

8 ♩ = 130,000137 ♩ = 130,000137 ♩ = 130,000137 ♩ = 130,000137 ♩ = 130,000137 ♩ = 130,000137

17 ♩ = 130,000137 ♩ = 130,000137 ♩ = 130,000137 ♩ = 130,000137 ♩ = 130,000137 ♩ = 130,000137

24 ♩ = 130,000137 ♩ = 130,000137 ♩ = 130,000137 ♩ = 130,000137 ♩ = 130,000137 ♩ = 130,000137

30 ♩ = 130,000137 ♩ = 130,000137 ♩ = 130,000137 ♩ = 130,000137 ♩ = 130,000137 ♩ = 130,000137

39 ♩ = 130,000137 ♩ = 130,000137 ♩ = 130,000137 ♩ = 130,000137 ♩ = 130,000137 ♩ = 130,000137

48 ♩ = 130,000137 ♩ = 130,000137 ♩ = 130,000137 ♩ = 130,000137 ♩ = 130,000137 ♩ = 130,000137

56 ♩ = 130,000137 ♩ = 130,000137 ♩ = 130,000137 ♩ = 130,000137 ♩ = 130,000137 ♩ = 130,000137

61 ♩ = 130,000137 ♩ = 130,000137 ♩ = 130,000137 ♩ = 130,000137 ♩ = 130,000137 ♩ = 130,000137

70 ♩ = 130,000137 ♩ = 130,000137 ♩ = 130,000137 ♩ = 130,000137 ♩ = 130,000137 ♩ = 130,000137

2

Guitar

76 = 130,000137 ♪ = 130,000137 ♪ = 130,000137 ♪ = 130,000137 ♪ = 130,000137 ♪ = 130,000137 ♪ = 130,000137 ♪ = 130,000137

A musical staff with a treble clef. The staff contains five measures, each with a single horizontal line representing a guitar fret. The first four measures each have a single horizontal line. The fifth measure has a thick black bar across the entire staff, indicating a double bar line. A large number '2' is positioned above the staff at the end of the fifth measure.

Cars - Just What I Needed

Guitar

♩ = 130,000137 ♩ = 130,000137 ♩ = 130,000137 ♩ = 130,000137

5 ♩ = 130,000137 = 130,000137 = 130,000137 = 130,000137 = 130,000137 = 130,000137 = 130,000137 = 130,000137

14 ♩ = 130,000137 = 130,000137 = 130,000137 = 130,000137 = 130,000137 = 130,000137 = 130,000137 = 130,000137

22 ♩ = 130,000137 ♩ = 130,000137 ♩ = 130,000137 ♩ = 130,000137

26 ♩ = 130,000137 ♩ = 130,000137 ♩ = 130,000137 ♩ = 130,000137

30 ♩ = 130,000137 ♩ = 130,000137 ♩ = 130,000137 ♩ = 130,000137 ♩ = 130,000137 ♩ = 130,000137

33 ♩ = 130,000137 ♩ = 130,000137 ♩ = 130,000137 ♩ = 130,000137 ♩ = 130,000137 ♩ = 130,000137

36 ♩ = 130,000137 ♩ = 130,000137 ♩ = 130,000137 ♩ = 130,000137 ♩ = 130,000137 ♩ = 130,000137

39 ♩ = 130,000137 ♩ = 130,000137 ♩ = 130,000137 ♩ = 130,000137 ♩ = 130,000137 ♩ = 130,000137

45 ♩ = 130,000137 ♩ = 130,000137 ♩ = 130,000137 ♩ = 130,000137 ♩ = 130,000137 ♩ = 130,000137

System 1: Three staves (T, A, B). Tab: 0 0 0 0 | 2 2 2 2 | 2 2 2 2 ? ? ? ? | ? ? ? ? | 0 0 0 0 | 0 0 0 0 2 4 | 0 2

55 ♩ = 130,000137 ♩ = 130,000137 ♩ = 130,000137 ♩ = 130,000137

System 2: Three staves (T, A, B). Tab: 2 0 0 | 4 | 4 2 2 | 2 4 0 | 2 | 2 0 0 4 | 4 | 2 4 0 | 2

59 ♩ = 130,000137 ♩ = 130,000137 ♩ = 130,000137 ♩ = 130,000137 ♩ = 130,000137

System 3: Three staves (T, A, B). Tab: 2 0 0 | 4 | 4 2 2 | 2 4 0 | 2 | 2 0 0 | 4 | 4 4

63 ♩ = 130,000137 ♩ = 130,000137 ♩ = 130,000137 ♩ = 130,000137

System 4: Three staves (T, A, B). Tab: 4 4 4 | 4 4 4 | 4 4 | 0 0 0 | 2 2 2 2 4

65 ♩ = 130,000137 ♩ = 130,000137 ♩ = 130,000137 ♩ = 130,000137

System 5: Three staves (T, A, B). Tab: 4 4 4 | ? ? ? ? ? | 0 0 0 | 2 2 2 2 4

67 ♩ = 130,000137 ♩ = 130,000137 ♩ = 130,000137

System 6: Three staves (T, A, B). Tab: 4 4 4 | ? ? ? ? ? | 0 0 0 | 2 2 2 2 4

69 ♩ = 130,000137 ♩ = 130,000137 ♩ = 130,000137 ♩ = 130,000137

System 7: Three staves (T, A, B). Tab: 4 4 4 | ? ? ? ? ? | 0 0 0 | 2 2 2 2 4

71 ♩ = 130,000137 ♩ = 130,000137 ♩ = 130,000137 ♩ = 130,000137

System 8: Three staves (T, A, B). Tab: 4 4 4 | ? ? ? ? ? | 0 0 0 | 2 2 2 2 4

73 ♩ = 130,000137 ♩ = 130,000137 ♩ = 130,000137 ♩ = 130,000137

System 9: Three staves (T, A, B). Tab: 4 4 4 | ? ? ? ? ? | 0 0 0 | 2 2 2 2 4

75 ♩ = 130,000137 ♩ = 130,000137 ♩ = 130,000137

System 10: Three staves (T, A, B). Tab: 4 4 4 | ? ? ? ? ? | 0 0 0 | 2 2 2 2 4

77 ♪ = 130,000137 ♪ = 130,000137 ♪ = 130,000137 ♪ = 130,000137 ♪ = 130,000137 3

Guitar

2

T
A
B

4 4 4 ? ? ? ? ? 0 0 0 2 2 2 2 4 4

Cars - Just What I Needed

Bass

♩ = 130,000137 ♩ = 130,000137 ♩ = 130,000137 ♩ = 130,000137

5 ♩ = 130,000137 ♩ = 130,000137 ♩ = 130,000137 ♩ = 130,000137

9 ♩ = 130,000137 ♩ = 130,000137 ♩ = 130,000137 ♩ = 130,000137

13 ♩ = 130,000137 ♩ = 130,000137 ♩ = 130,000137 ♩ = 130,000137

17 ♩ = 130,000137 ♩ = 130,000137 ♩ = 130,000137 ♩ = 130,000137

21 ♩ = 130,000137 ♩ = 130,000137 ♩ = 130,000137 ♩ = 130,000137 ♩ = 130,000137

26 ♩ = 130,000137 ♩ = 130,000137 ♩ = 130,000137 ♩ = 130,000137 ♩ = 130,000137

30 ♩ = 130,000137 ♩ = 130,000137 ♩ = 130,000137 ♩ = 130,000137 ♩ = 130,000137 ♩ = 130,000137

33 ♩ = 130,000137 ♩ = 130,000137 ♩ = 130,000137 ♩ = 130,000137 ♩ = 130,000137 ♩ = 130,000137

37 ♩ = 130,000137 ♩ = 130,000137 ♩ = 130,000137 ♩ = 130,000137 ♩ = 130,000137

V.S.

Bass

41 ♪ = 130,000137 ♪ = 130,000137 ♪ = 130,000137 ♪ = 130,000137



45 ♪ = 130,000137 ♪ = 130,000137 ♪ = 130,000137 ♪ = 130,000137



49 ♪ = 130,000137 ♪ = 130,000137 ♪ = 130,000137 ♪ = 130,000137



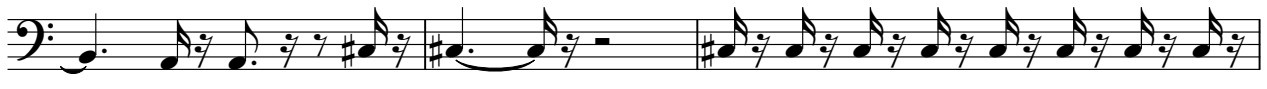
53 ♪ = 130,000137 ♪ = 130,000137 ♪ = 130,000137 ♪ = 130,000137



57 ♪ = 130,000137 ♪ = 130,000137 ♪ = 130,000137 ♪ = 130,000137



61 ♪ = 130,000137 ♪ = 130,000137 ♪ = 130,000137 ♪ = 130,000137



64 ♪ = 130,000137 ♪ = 130,000137 ♪ = 130,000137 ♪ = 130,000137 ♪ = 130,000137



68 ♪ = 130,000137 ♪ = 130,000137 ♪ = 130,000137 ♪ = 130,000137 ♪ = 130,000137



72 ♪ = 130,000137 ♪ = 130,000137 ♪ = 130,000137 ♪ = 130,000137 ♪ = 130,000137



76 ♪ = 130,000137 ♪ = 130,000137 ♪ = 130,000137 ♪ = 130,000137 ♪ = 130,000137



Cars - Just What I Needed

Mute Guitar

♩ = 130,000137 ♩ = 130,000137 ♩ = 130,000137 ♩ = 130,000137



5 ♩ = 130,000137 ♩ = 130,000137 ♩ = 130,000137 ♩ = 130,000137



9 ♩ = 130,000137 ♩ = 130,000137 ♩ = 130,000137 ♩ = 130,000137




13 ♩ = 130,000137 ♩ = 130,000137 ♩ = 130,000137 ♩ = 130,000137




17 ♩ = 130,000137 ♩ = 130,000137 ♩ = 130,000137 ♩ = 130,000137




21 ♩ = 130,000137 ♩ = 130,000137 ♩ = 130,000137 ♩ = 130,000137 ♩ = 130,000137



26 ♩ = 130,000137 ♩ = 130,000137 ♩ = 130,000137 ♩ = 130,000137 ♩ = 130,000137




30 ♩ = 130,000137 ♩ = 130,000137 ♩ = 130,000137 ♩ = 130,000137 ♩ = 130,000137



33 ♩ = 130,000137 ♩ = 130,000137 ♩ = 130,000137 ♩ = 130,000137 ♩ = 130,000137



37 ♩ = 130,000137 ♩ = 130,000137 ♩ = 130,000137 ♩ = 130,000137 ♩ = 130,000137



V.S.

Mute Guitar

41 ♪ = 130,000137 ♪ = 130,000137 ♪ = 130,000137 ♪ = 130,000137

45 ♪ = 130,000137 ♪ = 130,000137 ♪ = 130,000137 ♪ = 130,000137

49 ♪ = 130,000137 ♪ = 130,000137 ♪ = 130,000137 ♪ = 130,000137

53 ♪ = 130,000137 ♪ = 130,000137 ♪ = 130,000137 ♪ = 130,000137

57 ♪ = 130,000137 ♪ = 130,000137 ♪ = 130,000137 ♪ = 130,000137

61 ♪ = 130,000137 ♪ = 130,000137 ♪ = 130,000137 ♪ = 130,000137

64 ♪ = 130,000137 ♪ = 130,000137 ♪ = 130,000137 ♪ = 130,000137 ♪ = 130,000137

68 ♪ = 130,000137 ♪ = 130,000137 ♪ = 130,000137 ♪ = 130,000137 ♪ = 130,000137

72 ♪ = 130,000137 ♪ = 130,000137 ♪ = 130,000137 ♪ = 130,000137 ♪ = 130,000137

76 ♪ = 130,000137 ♪ = 130,000137 ♪ = 130,000137 ♪ = 130,000137 ♪ = 130,000137

Cars - Just What I Needed

Synth

♩ = 130,000137 = 130,000137 = 130,000137 = 130,000137 = 130,000137 = 130,000137 = 130,000137 = 130,000137



10 ♩ = 130,000137 = 130,000137 = 130,000137 = 130,000137 = 130,000137 = 130,000137 = 130,000137 = 130,000137



19 ♩ = 130,000137 = 130,000137 = 130,000137 = 130,000137 = 130,000137 = 130,000137 = 130,000137 = 130,000137



25 ♩ = 130,000137 = 130,000137 = 130,000137 = 130,000137 = 130,000137 = 130,000137 = 130,000137 = 130,000137



31 ♩ = 130,000137 = 130,000137 = 130,000137 = 130,000137 = 130,000137 = 130,000137 = 130,000137 = 130,000137



35 ♩ = 130,000137 = 130,000137 = 130,000137 = 130,000137 = 130,000137 = 130,000137 = 130,000137 = 130,000137



40 ♩ = 130,000137 = 130,000137 = 130,000137 = 130,000137 = 130,000137 = 130,000137 = 130,000137 = 130,000137



49 ♩ = 130,000137 = 130,000137 = 130,000137 = 130,000137 = 130,000137 = 130,000137 = 130,000137 = 130,000137



56 ♩ = 130,000137 = 130,000137 = 130,000137 = 130,000137 = 130,000137 = 130,000137 = 130,000137 = 130,000137



60 ♩ = 130,000137 = 130,000137 = 130,000137 = 130,000137 = 130,000137 = 130,000137 = 130,000137 = 130,000137



2

Synth

64 ♪ = 130,000137 ♪ = 130,000137 = 130,000137 = 130,000137 = 130,000137 = 130,000137 = 130,000137

68 ♪ = 130,000137 ♪ = 130,000137 ♪ = 130,000137 ♪ = 130,000137 = 130,000137 = 130,000137

72 ♪ = 130,000137 ♪ = 130,000137 = 130,000137 = 130,000137 = 130,000137 = 130,000137 = 130,000137

76 ♪ = 130,000137 ♪ = 130,000137

78 ♪ = 130,000137 ♪ = 130,000137 ♪ = 130,000137 = 130,000137 = 130,000137

Cars - Just What I Needed

Vocal

1 = 130,000/137 2 = 130,000/137 3 = 130,000/137 4 = 130,000/137 5 = 130,000/137 6 = 130,000/137

8 = 130,000/137 9 = 130,000/137 10 = 130,000/137 11 = 130,000/137 12 = 130,000/137

13 = 130,000/137 14 = 130,000/137 15 = 130,000/137 16 = 130,000/137 17 = 130,000/137

18 = 130,000/137 19 = 130,000/137 20 = 130,000/137 21 = 130,000/137 22 = 130,000/137

23 = 130,000/137 24 = 130,000/137 25 = 130,000/137 26 = 130,000/137 27 = 130,000/137

28 = 130,000/137 29 = 130,000/137 30 = 130,000/137 31 = 130,000/137 32 = 130,000/137 33 = 130,000/137 34 = 130,000/137 35 = 130,000/137 36 = 130,000/137

36 = 130,000/137 37 = 130,000/137 38 = 130,000/137 39 = 130,000/137 40 = 130,000/137 41 = 130,000/137

42 = 130,000/137 43 = 130,000/137 44 = 130,000/137 45 = 130,000/137 46 = 130,000/137

47 = 130,000/137 48 = 130,000/137 49 = 130,000/137 50 = 130,000/137

51 = 130,000/137 52 = 130,000/137 53 = 130,000/137 54 = 130,000/137

2

Vocal

55 $\text{♩} = 130,000137$ $\text{♩} = 130,000137$ $\text{♩} = 130,000137$ $\text{♩} = 130,000137$

59 $\text{♩} = 130,000137$ $\text{♩} = 130,000137$ $\text{♩} = 130,000137$ $\text{♩} = 130,000137$ $\text{♩} = 130,000137$ $\text{♩} = 130,000137$

64 $\text{♩} = 130,000137$ $\text{♩} = 130,000137$ $\text{♩} = 130,000137$ $\text{♩} = 130,000137$ $\text{♩} = 130,000137$ $\text{♩} = 130,000137$ $\text{♩} = 130,000137$ $\text{♩} = 130,000137$ $\text{♩} = 130,000137$

73 $\text{♩} = 130,000137$ $\text{♩} = 130,000137$ $\text{♩} = 130,000137$ $\text{♩} = 130,000137$ $\text{♩} = 130,000137$ $\text{♩} = 130,000137$ $\text{♩} = 130,000137$ $\text{♩} = 130,000137$ $\text{♩} = 130,000137$

Cars - Just What I Needed

Backing vocal

♩ = 130,000137 = 130,000137 = 130,000137 = 130,000137 = 130,000137 = 130,000137

8 ♩ = 130,000137 ♩ = 130,000137 ♩ = 130,000137 ♩ = 130,000137 ♩ = 130,000137

13 ♩ = 130,000137 ♩ = 130,000137 ♩ = 130,000137 ♩ = 130,000137

17 ♩ = 130,000137 ♩ = 130,000137 ♩ = 130,000137 ♩ = 130,000137 ♩ = 130,000137

22 ♩ = 130,000137 ♩ = 130,000137 ♩ = 130,000137 ♩ = 130,000137

26 ♩ = 130,000137 ♩ = 130,000137 ♩ = 130,000137 = 130,000137 = 130,000137 = 130,000137 = 130,000137 = 130,000137

32 ♩ = 130,000137 = 130,000137 = 130,000137 = 130,000137 = 130,000137 = 130,000137 = 130,000137 = 130,000137

37 ♩ = 130,000137 = 130,000137 = 130,000137 = 130,000137 = 130,000137

2

Backing vocal

41 ♪ = 130,000137 ♪ = 130,000137 ♪ = 130,000137 ♪ = 130,000137

45 ♪ = 130,000137 ♪ = 130,000137 ♪ = 130,000137 ♪ = 130,000137

49 ♪ = 130,000137 ♪ = 130,000137 ♪ = 130,000137 ♪ = 130,000137 ♪ = 130,000137

54 ♪ = 130,000137 ♪ = 130,000137 ♪ = 130,000137 ♪ = 130,000137 ♪ = 130,000137

59 ♪ = 130,000137 ♪ = 130,000137 ♪ = 130,000137 ♪ = 130,000137 ♪ = 130,000137

64 ♪ = 130,000137 ♪ = 130,000137 ♪ = 130,000137 ♪ = 130,000137 ♪ = 130,000137 ♪ = 130,000137 ♪ = 130,000137 ♪ = 130,000137 ♪ = 130,000137

73 ♪ = 130,000137 ♪ = 130,000137 ♪ = 130,000137 ♪ = 130,000137 ♪ = 130,000137 ♪ = 130,000137 ♪ = 130,000137 ♪ = 130,000137 ♪ = 130,000137 ♪ = 130,000137