

Cat Stevens - Sad Lisa

♩ = 120,000000

Rhythm

Bass

Musical notation for the first system, measures 1-4. The Rhythm part is in 4/4 time and features a complex, multi-measure rhythmic pattern. The Bass part consists of a simple, steady bass line.

4

Vox

Rhythm

Rhythm

Bass

Musical notation for the second system, measures 5-8. The Vox part begins with a vocal line starting in measure 5. The Rhythm and Bass parts continue their respective patterns from the first system.

8

Vox

Rhythm

Rhythm

Bass

Musical notation for the third system, measures 9-12. The Vox part continues with a vocal line starting in measure 9. The Rhythm and Bass parts continue their respective patterns from the second system.

11

Vox

Rhythm

Rhythm

Bass

15

Vox

Rhythm

Rhythm

Bass

19

Vox

Rhythm

Rhythm

Bass

35

Vox

Rhythm

Rhythm

Bass

39

Vox

Rhythm

Rhythm

Bass

43

Vox

Rhythm

Rhythm

Bass

47

Vox

Rhythm

Rhythm

Bass

51

Vox

Rhythm

Rhythm

Bass

55

Vox

Rhythm

Rhythm

Bass

59

Vox

Rhythm

Rhythm

Bass

63

Vox

Rhythm

Rhythm

Bass

67

Vox

Rhythm

Rhythm

Bass

71

Vox

Rhythm

Rhythm

Bass

75

Vox

Rhythm

Rhythm

Bass

79

Rhythm

Bass

Cat Stevens - Sad Lisa

Vox

♩ = 120,000000

5

10

16

21

27

2

34

39

44

49

2

56



61



67



72



76



Cat Stevens - Sad Lisa

Rhythm

♩ = 120,000000

5

10

16

21

27

34

39

44

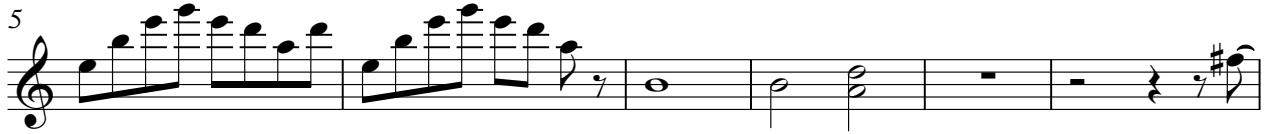
49

2

Cat Stevens - Sad Lisa

Rhythm

♩ = 120,000000



Cat Stevens - Sad Lisa

Bass

♩ = 120,000000

8

13

19

25

32

37

44

50

57

V.S.

2

Bass

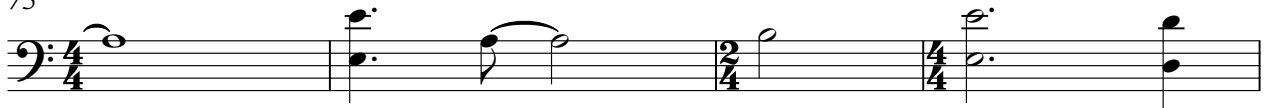
62



69



75



79

