

Catedral - Eu Amo Mais Voce

♩ = 187,999969

Percussion

Electric Guitar

5-string Fretless Electric Bass

4

Perc.

E. Gtr.

E. Bass

7

A. Fl.

Perc.

E. Gtr.

E. Bass

de pois des sa ven ta ni a_o tem po ral

Copyright 2001 by TKT
Copyright 2001 by TKT

10

A. Fl.

Perc.

E. Gtr.

E. Bass

tez da nos sa vi da um m

13

A. Fl.

Perc.

E. Gtr.

E. Bass

un do de si gual qual e a

16

A. Fl.

Perc.

E. Gtr.

E. Bass

tu a o teu se gre do

19

A. Fl.

Perc.

E. Gtr.

E. Bass

me diz co mo eu vou de ci frar

22

A. Fl.

Perc.

E. Gtr.

E. Bass

minha ver da de e a b sur

25

A. Fl.

Perc.

E. Gtr.

E. Bass

da no plural mas pra

28

A. Fl.

Perc.

E. Gtr.

E. Bass

mim ho nes ta m en te is so e normal

31

A. Fl.

Perc.

E. Gtr.

E. Bass

na mi nha on da teu o ce a

34

A. Fl.

Perc.

E. Gtr.

E. Bass

no me en si na co mo na ve gar

37

A. Fl.

Perc.

E. Gtr.

E. Bass

eu a mo

40

A. Fl.

Perc.

E. Gtr.

E. Bass

mais vo ce do qu e e

43

A. Fl.

Perc.

E. Gtr.

E. Gtr.

E. Bass

u

46

A. Fl.

Perc.

E. Gtr.

E. Gtr.

E. Bass

eu a mo mais vo ce

49

A. Fl.

Perc.

E. Gtr.

E. Bass

do qu e e u

52

Perc.

E. Gtr.

E. Gtr.

E. Bass

55

A. Fl.

Perc.

E. Gtr.

E. Bass

a tar dinha as coi sas mu dam sem pa rar

58

A. Fl.

Perc.

E. Gtr.

E. Bass

e a gen te fa la mu

61

A. Fl.

Perc.

E. Gtr.

E. Bass

i to por fa lar mas de re

64

A. Fl.

Perc.

E. Gtr.

E. Bass

pen te a gen te sen te

67

A. Fl.

Perc.

E. Gtr.

E. Bass

que tu do so brou num o lhar

70

A. Fl.

Perc.

E. Gtr.

E. Bass

pen so in fi ni ta men

73

A. Fl.

Perc.

E. Gtr.

E. Bass

te sem pa rar a ver

76

A. Fl.

Perc.

E. Gtr.

E. Bass

da de_e trans pa ren te no mi rar

79

A. Fl.

Perc.

E. Gtr.

E. Bass

da tua re ti na mi nha me ni

82

A. Fl.

Perc.

E. Gtr.

E. Bass

na me diz co mo nao te a

85

A. Fl.

Perc.

E. Gtr.

E. Bass

mar eu a mo

88

A. Fl.

Perc.

E. Gtr.

E. Bass

mais vo ce do qu e e

91

A. Fl.

Perc.

E. Gtr.

E. Gtr.

E. Bass

u

94

A. Fl.

Perc.

E. Gtr.

E. Gtr.

E. Bass

eu a mo mais vo

97

A. Fl.

Perc.

E. Gtr.

E. Bass

ce do qu e e u

100

Perc. E. Gtr. E. Gtr. E. Bass

This system covers measures 100 to 102. The percussion part features a consistent rhythmic pattern of eighth notes with 'x' marks above them. The first electric guitar part has a melodic line with eighth notes and some slurs. The second electric guitar part consists of sustained chords. The bass part has a steady eighth-note line, ending with a triplet of eighth notes in measure 102.

103

Perc. E. Gtr. E. Gtr. E. Bass

This system covers measures 103 to 105. The percussion part continues with the same eighth-note pattern. The first electric guitar part has a melodic line with some rests and slurs. The second electric guitar part has sustained chords. The bass part continues with eighth notes and a triplet in measure 105.

106

Perc. E. Gtr. E. Gtr. E. Bass

This system covers measures 106 to 108. The percussion part continues with the eighth-note pattern. The first electric guitar part has a melodic line with a triplet in measure 106. The second electric guitar part has sustained chords. The bass part continues with eighth notes.

109

Perc. E. Gtr. E. Gtr. E. Bass

Detailed description: This system covers measures 109, 110, and 111. The Percussion part features a consistent rhythmic pattern of eighth notes with 'x' marks above them, indicating a specific sound. The first Electric Guitar part has a melodic line with eighth and quarter notes. The second Electric Guitar part consists of sustained chords, with a change in voicing between measures 110 and 111. The Electric Bass part provides a steady accompaniment with eighth notes.

112

Perc. E. Gtr. E. Gtr. E. Bass

Detailed description: This system covers measures 112, 113, and 114. The Percussion part continues with the same eighth-note pattern. The first Electric Guitar part has a more active melodic line with eighth notes and some rests. The second Electric Guitar part features sustained chords, with a change in voicing between measures 113 and 114. The Electric Bass part continues with eighth notes.

115

Perc. E. Gtr. E. Gtr. E. Bass

Detailed description: This system covers measures 115, 116, and 117. The Percussion part maintains the eighth-note pattern. The first Electric Guitar part has a melodic line with eighth notes and rests. The second Electric Guitar part has sustained chords, with a change in voicing between measures 116 and 117. The Electric Bass part includes a triplet of eighth notes in measure 116.

118

A. Fl.

Perc.

E. Gtr.

E. Gtr.

E. Bass

pen so in fi ni ta men

121

A. Fl.

Perc.

E. Gtr.

E. Bass

te sem pa rar a ver

124

A. Fl.

Perc.

E. Gtr.

E. Bass

da de e trans pa ren te no mi rar

127

A. Fl.

Perc.

E. Gtr.

E. Bass

da tua re ti na mi nha me ni

130

A. Fl.

Perc.

E. Gtr.

E. Bass

na me diz co mo nao te a

133

A. Fl.

Perc.

E. Gtr.

E. Bass

mar eu a mo

136

A. Fl.

Perc.

E. Gtr.

E. Bass

mais vo ce do qu e : e

139

A. Fl.

Perc.

E. Gtr.

E. Gtr.

E. Bass

u

142

A. Fl.

Perc.

E. Gtr.

E. Gtr.

E. Bass

eu 3 a mo mais vo

145

A. Fl.

Perc.

E. Gtr.

E. Bass

ce do qu e e u

148

A. Fl.

Perc.

E. Gtr.

E. Gtr.

E. Bass

eu 3

151

A. Fl.

Perc.

E. Gtr.

E. Bass

a mo mais vo ce

154

A. Fl.

Perc.

E. Gtr.

E. Gtr.

E. Bass

do qu e e u

157

A. Fl.

Perc.

E. Gtr.

E. Gtr.

E. Bass

eu a mo mais

160

A. Fl.

Perc.

E. Gtr.

E. Bass

vo ce do que e

163

A. Fl.

Perc.

E. Gtr.

E. Gtr.

E. Bass

166

Perc.

E. Gtr.

E. Gtr.

E. Bass

169

Perc.

E. Gtr.

E. Gtr.

E. Bass

The image shows a musical score for three instruments: Percussion, Electric Guitar (E. Gtr.), and Electric Bass. The score is divided into three measures. The Percussion part starts with a snare drum hit in the first measure, followed by rests. The Electric Guitar part features a melodic line with slurs and a 7th fret barre in the first measure, and rests in the second and third measures. The Electric Bass part has a bass line with slurs and a 7th fret barre in the first measure, and rests in the second and third measures.

Alto Flute

Catedral - Eu Amo Mais Voce

♩ = 187,999969

6



11



16



22



27



32



38



46



50



Copyright 2001 by TKT
Copyright 2001 by TKT

Catedral - Eu Amo Mais Voce

Percussion

♩ = 187,999969

de pois des sa ven ta ni

a_o tem poral fez da nos sa vi da_umm

un do de sigual qual e a tu a

o teu se gre do me diz co mo_euvou de ci frar

minhaver da de_e a b sur

da no plural mas pra mim ho nes ta m

en te_iso_e nomal na mi nha on da

teu o ce a no me_en si na co mo na ve gar

mo mais vo ce V.S.

Copyright 2001 by TKT
Copyright 2001 by TKT

Percussion

41
do qu e e u

45
eu a mo mais vo ce

49
do qu e e u

53
a tar dinha_aoi sas mu

57
dam sem parar e a gen te fa la mu

61
i to por fa lar mas de re pen te

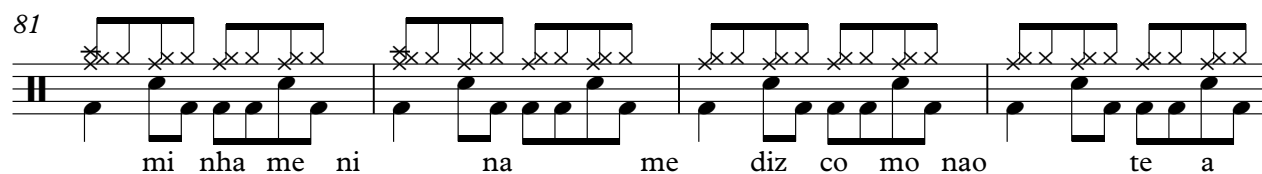
65
a gen te sen te que tu do so brou num o lhar

69
pen so in fi ni ta men

73
te sem parar a ver da de_ens pa ren

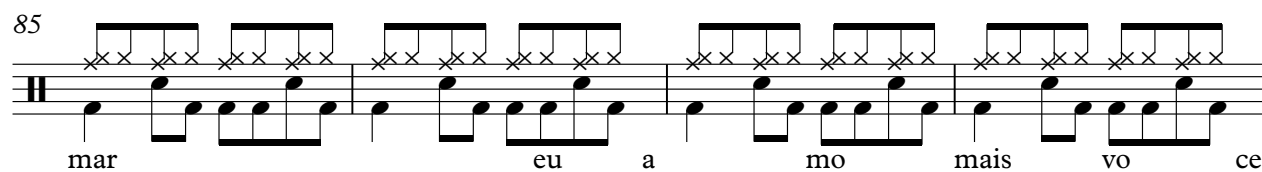
77
te no mirar da tua re ti na

81



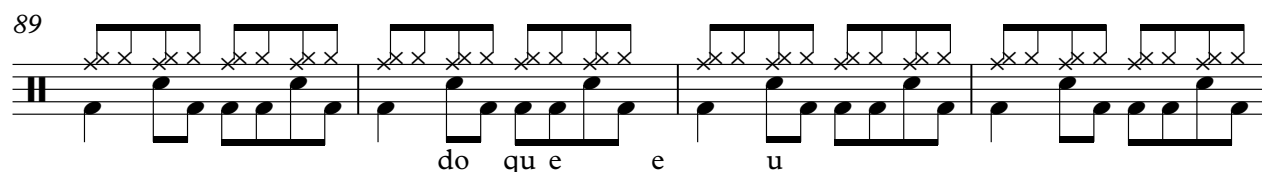
mi nha me ni na me diz co mo nao te a

85



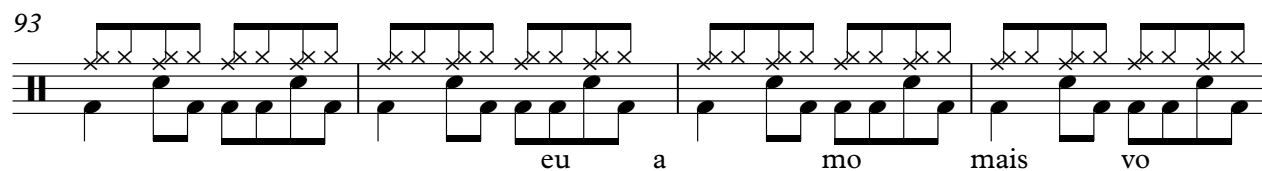
mar eu a mo mais vo ce

89



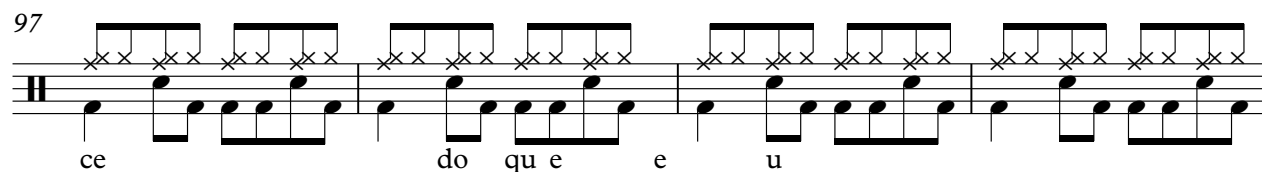
do qu e e u

93



eu a mo mais vo

97

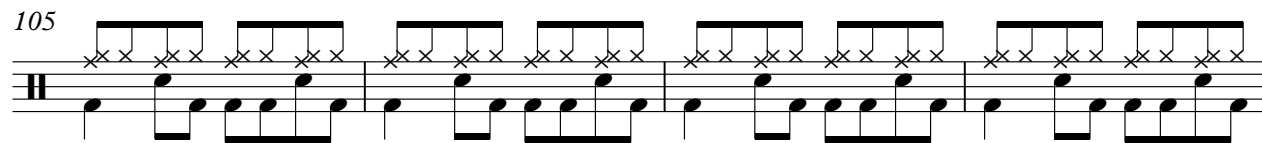


ce do qu e e u

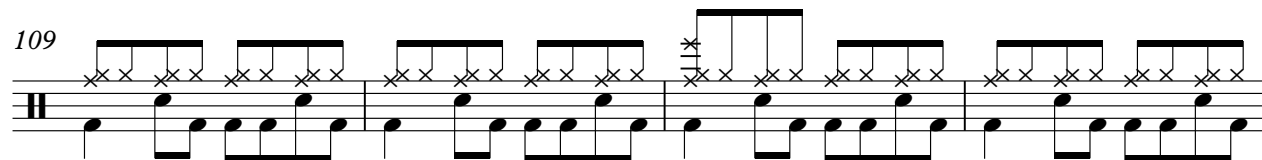
101




105



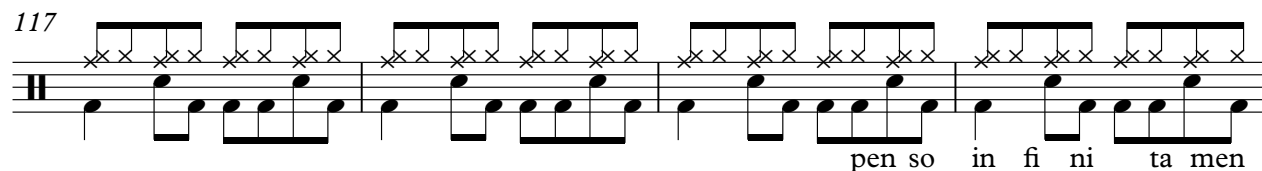
109



113



117



pen so in fi ni ta men

V.S.

121

te sem parar a ver da de_ens pa ren

125

te no mirar da tua re ti na

129

mi nha me ni na me diz co mo nao te a

133

mar eu a mo mais vo ce

137

do qu e e u

141

eu a mo mais vo

145

ce do qu e e u

149

eu a mo mais vo ce

153

do qu e e u

157

eu a mo mais vo ce

Percussion

161

do que e u

165

169

2

Electric Guitar

Catedral - Eu Amo Mais Voce

♩ = 187,999969

2

6

46

54

94

102

107

113

119

141

Copyright 2001 by TKT
Copyright 2001 by TKT

148

156

163

167

170

Electric Guitar

Catedral - Eu Amo Mais Voce

♩ = 187,999969

6

14

22

31

39

47

55

62

69

77

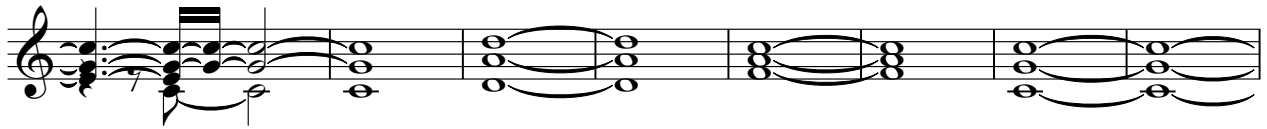
Copyright 2001 by TKT
Copyright 2001 by TKT

V.S.

85



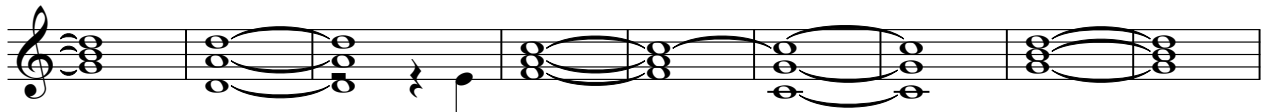
93



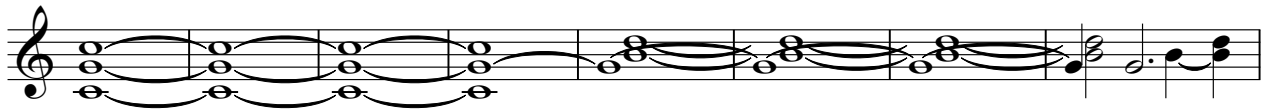
101



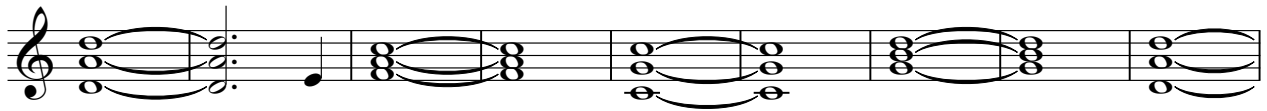
110



119



127



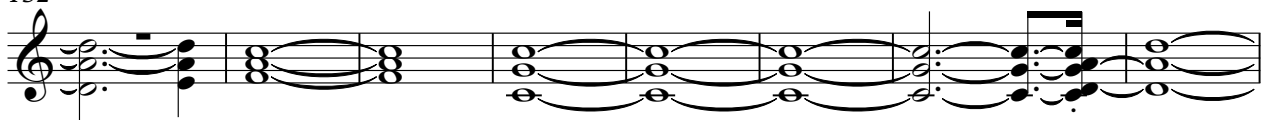
136



144



152



160



167



5-string Fretless Electric Bass Catedral - Eu Amo Mais Voce

♩ = 187,999969

2

6

10

14

18

22

26

30

34

38

Copyright 2001 by TKT
Copyright 2001 by TKT

V.S.

42



46



50



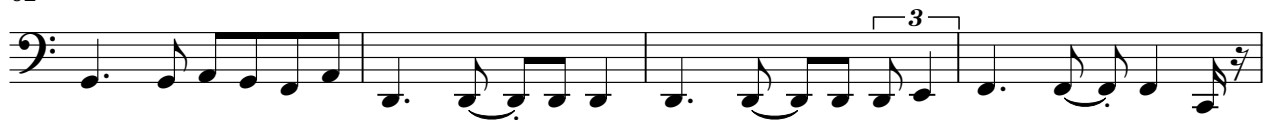
54



58



62



66



70



74



78



83



87



91



95



99



103



107



111



115



119



V.S.

123



128



132



136



140



144



148



152



156



160



164

Musical notation for measure 164, featuring a bass clef and a series of eighth notes with a triplet of eighth notes.

168

Musical notation for measure 168, featuring a bass clef and a series of eighth notes with a triplet of eighth notes.

170

Musical notation for measure 170, featuring a bass clef and a series of eighth notes with a triplet of eighth notes.