

CB - Game Over

♩ = 128,000000

Sequenced by:



Robert Aaron Eason



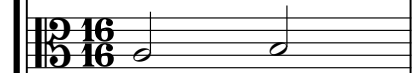
(Willow)



Questions?



Game Over



Composed by:



Yoshio Tsuru, Jun Takema, Tsukasa "Macco" Masuko, Bang Heads



Sequenced by:
Robert Aaron Eason
(Willow)
Questions?
Game Over
Composed by:
Yoshio Tsuru, Jun Takema, Tsukasa "Macco" Masuko, Bang Heads



Musical score for page 2, featuring six staves. The top five staves are in treble clef, and the bottom staff is in bass clef. The score is marked with a '2' at the top right. The notation includes various note values and rests across the staves.

Sequenced by:
Robert Aaron Eason
(Willow)
Questions?
Game Over
Composed by:
Yoshio Tsuru, Jun Takema, Tsukasa "Macco" Masuko, Bang Heads



Musical score for page 3, featuring six staves. The top five staves are in treble clef, and the bottom staff is in bass clef. The score is marked with a '3' at the top right. The notation includes various note values and rests across the staves.

4

Sequenced by:

Robert Aaron Eason

(Willow)

Questions?

Game Over

Composed by:

Yoshio Tsuru, Jun Takema, Tsukasa "Macco" Masuko, Bang Heads

5

Sequenced by:

Robert Aaron Eason

(Willow)

Questions?

Game Over

Composed by:

Yoshio Tsuru, Jun Takema, Tsukasa "Macco" Masuko, Bang Heads

6

Sequenced by:

Robert Aaron Eason

(Willow)

Questions?

Game Over

Composed by:

Yoshio Tsuru, Jun Takema, Tsukasa "Macco" Masuko, Bang Heads

7

Sequenced by:

Robert Aaron Eason

(Willow)

Questions?

Game Over

Composed by:

Yoshio Tsuru, Jun Takema, Tsukasa "Macco" Masuko, Bang Heads

8

Sequenced by:

Robert Aaron Eason

(Willow)

Questions?

Game Over

Composed by:

Yoshio Tsuru, Jun Takema, Tsukasa "Macco" Masuko, Bang Heads

9

Sequenced by:

Robert Aaron Eason

(Willow)

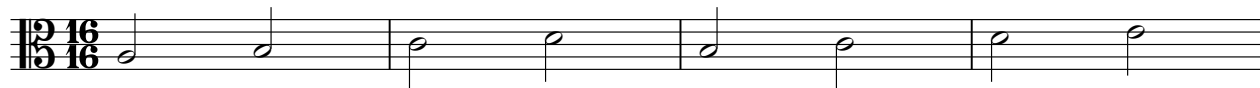
Questions?

Game Over

Game Over

CB - Game Over

♩ = 128,000000



5



Composed by:

CB - Game Over

♩ = 128,000000



CB - Game Over
Yoshio Tsuru, Jun Takema, Tsukasa "Macco" Masuko, Bang Heads

♩ = 128,000000

