

# Celine Dion - Le blues du businessman

♩ = 75,000000

Musical score for the first system, measures 1-4. The score is in 4/4 time and G major. It features three staves: Batterie (Drums), Guitare (Guitar), and Basse (Bass). The Batterie part has a steady eighth-note pattern. The Guitare part has a complex chordal accompaniment with many beamed notes. The Basse part has a simple bass line with a 7th fret barre at the start of measure 2.



Musical score for the second system, measures 5-8. It continues the three-staff arrangement from the first system. A '3' above the Batterie staff indicates a triplet of eighth notes. The guitar and bass parts continue their respective patterns.



Musical score for the third system, measures 9-12. This system introduces a fourth staff, 'Mélodie' (Melody), in the treble clef. The Batterie, Guitare, and Basse parts continue. The Melodie part has a melodic line with eighth and sixteenth notes.

6

Mélocdie

Batterie

Guitare

Basse



8

Mélocdie

Batterie

Guitare

Basse



10

Mélocdie

Batterie

Guitare

Basse

3

12

Mélocdie

Batterie

Guitare

Basse



14

Mélocdie

Batterie

Guitare

Basse



16

Mélocdie

Batterie

Guitare

Basse

18

Mélocdie

Batterie

Guitare

Basse



20

Mélocdie

Batterie

Guitare

Basse



22

Mélocdie

Batterie

Guitare

Basse

3

24

Mélocdie

Batterie

Guitare

Basse



26

Mélocdie

Batterie

Guitare

Basse



28

Mélocdie

Batterie

Guitare

Basse

30  $\text{♩} = 67,000031$

Mélie

Cuivres

Batterie

Cymbales

Guitare

Basse

Cordes

Piano

34

Mélodie  
Cuivres  
Batterie  
Cymbales  
Basse  
Cordes  
Piano

This musical score block covers measures 34 to 36. It features seven staves: Mélodie (Melody), Cuivres (Brass), Batterie (Drums), Cymbales (Cymbals), Basse (Bass), Cordes (Strings), and Piano. The key signature is one sharp (F#) and the time signature is 4/4. The melody in measure 34 starts with a whole note G4, followed by a quarter rest, then a quarter note G4, and a quarter note F#4. In measure 35, it continues with a quarter note E4, a quarter note D4, and a quarter note C4. In measure 36, it has a quarter note B3, a quarter note A3, and a quarter note G3. The bass line in measure 34 has a whole note G2, followed by a quarter rest, then a quarter note G2, and a quarter note F#2. In measure 35, it has a quarter note E2, a quarter note D2, and a quarter note C2. In measure 36, it has a quarter note B1, a quarter note A1, and a quarter note G1. The piano accompaniment consists of chords: G4-B3-D3 in measure 34, E4-G3-A2 in measure 35, and C4-E3-G2 in measure 36.

37

Mélodie  
Cuivres  
Batterie  
Cymbales  
Basse  
Cordes  
Piano

This musical score block covers measures 37 to 39. It features seven staves: Mélodie (Melody), Cuivres (Brass), Batterie (Drums), Cymbales (Cymbals), Basse (Bass), Cordes (Strings), and Piano. The key signature is one sharp (F#) and the time signature is 4/4. The melody in measure 37 starts with a quarter rest, then a quarter note G4, and a quarter note F#4. In measure 38, it continues with a quarter note E4, a quarter note D4, and a quarter note C4. In measure 39, it has a quarter note B3, a quarter note A3, and a quarter note G3. The bass line in measure 37 has a whole note G2, followed by a quarter rest, then a quarter note G2, and a quarter note F#2. In measure 38, it has a quarter note E2, a quarter note D2, and a quarter note C2. In measure 39, it has a quarter note B1, a quarter note A1, and a quarter note G1. The piano accompaniment consists of chords: G4-B3-D3 in measure 37, E4-G3-A2 in measure 38, and C4-E3-G2 in measure 39.

40

Mélocdie

Cuivres

Batterie

Cymbales

Basse

Cordes

Piano



43

Mélocdie

Cuivres

Batterie

Cymbales

Basse

Cordes

Piano



46

Mélocdie

Cuivres

Batterie

Cymbales

Basse

Cordes

Piano



49

Mélocdie

Cuivres

Batterie

Cymbales

Basse

Cordes

Piano

52

Mélocdie

Cuivres

Batterie

Cymbales

Basse

Cordes

Piano



55

Mélocdie

Cuivres

Batterie

Cymbales

Basse

Cordes

Piano

58

Mélocdie

Cuivres

Batterie

Cymbales

Basse

Cordes

Piano

61

Mélocdie

Cuivres

Batterie

Cymbales

Basse

Cordes

Piano

64

Mélocdie

Cuivres

Batterie

Cymbales

Basse

Cordes

Piano



67

Mélocdie

Cuivres

Batterie

Cymbales

Basse

Cordes

Piano

70

Mélocdie

Cuivres

Batterie

Cymbales

Basse

Cordes

Piano

73

Mélocdie

Cuivres

Batterie

Cymbales

Basse

Cordes

Piano

$\text{♩} = 46,000031$

76 ♩ = 66,000069

Mélocdie

Cuivres

Batterie

Cymbales

Basse

Cordes

Piano

Celine Dion - Le blues du businessman

Mélodie

♩ = 75,000000

3

7

10

14

18

22

26

29

33

38

♩ = 67,000031

3

V.S.

43



48



53



58



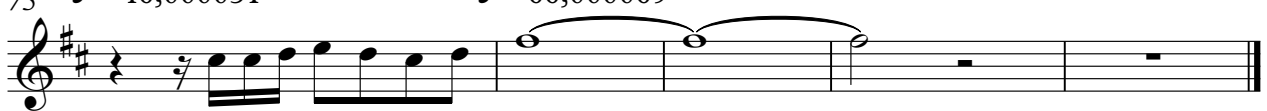
63



68



75





# Celine Dion - Le blues du businessman

Cuivres

♩ = 75,000000

♩ = 67,000031

31

31

33

41

48

55

62

69

75

♩ = 46,000031      ♩ = 66,000069

# Celine Dion - Le blues du businessman

Batterie

♩ = 75,000000

4/4

4

6

8

10

12

14

16

18

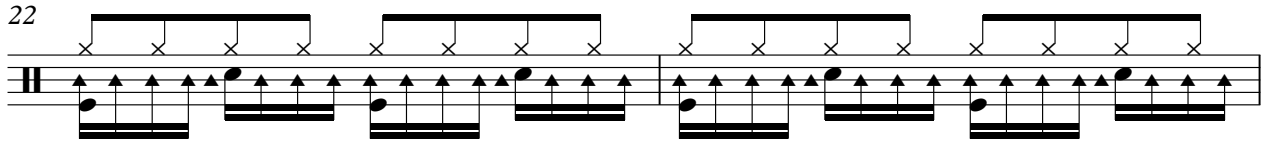
20

V.S.

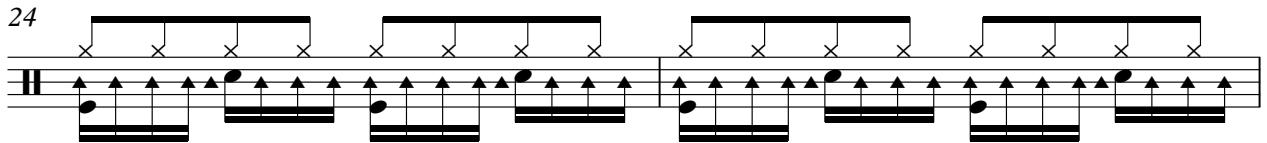
2

Batterie

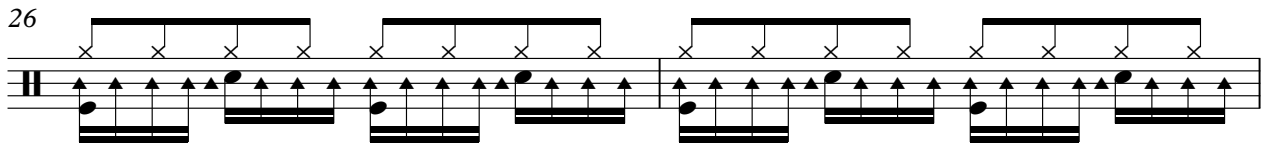
22



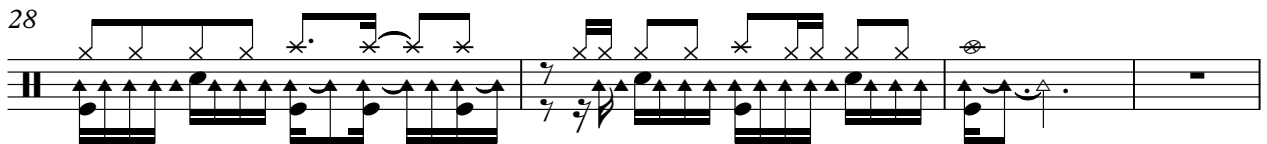
24



26



28



32 ♩ = 67,000031



37



42



46



51



55



59



64



68



73



76 ♩ = 66,000069



# Celine Dion - Le blues du businessman

## Cymbales

♩ = 75,000000 **31** ♩ = 67,000031

33

38

42

46

51

55

60

64

68

V.S.

2

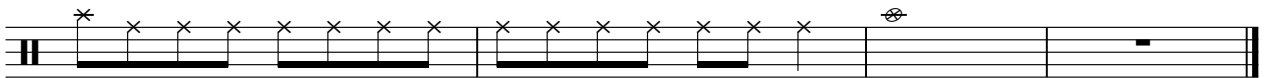
# Cymbales

73

♩ = 46,000031



76 ♩ = 66,000069



Celine Dion - Le blues du businessman

Guitare

♩ = 75,000000

3

4

6

8

10

12

14

16

18

V.S.

20

22

24

26

28

31

♩ = 67,000031

♩ = 46,000031 ♩ = 66,000069

42

4



Celine Dion - Le blues du businessman

Basse

♩ = 75,000000



8



14



20



25



31

♩ = 67,000031



36



41



45



50

Musical staff for measure 50, bass clef, key signature of two sharps (F# and C#). The staff contains a sequence of eighth notes with stems pointing up, starting on the second line (F#) and moving up stepwise to the eighth space (C#).

55

Musical staff for measure 55, bass clef, key signature of two sharps. The staff contains a sequence of eighth notes with stems pointing up, starting on the second line (F#) and moving up stepwise to the eighth space (C#).

61

Musical staff for measure 61, bass clef, key signature of two sharps. The staff contains a sequence of eighth notes with stems pointing up, starting on the second line (F#) and moving up stepwise to the eighth space (C#).

66

Musical staff for measure 66, bass clef, key signature of two sharps. The staff contains a sequence of eighth notes with stems pointing up, starting on the second line (F#) and moving up stepwise to the eighth space (C#).

72

Musical staff for measure 72, bass clef, key signature of two sharps. The staff contains a sequence of eighth notes with stems pointing up, starting on the second line (F#) and moving up stepwise to the eighth space (C#). A tempo marking  $\text{♩} = 46,000031$  is present above the staff.

76

Musical staff for measure 76, bass clef, key signature of two sharps. The staff contains a sequence of eighth notes with stems pointing up, starting on the second line (F#) and moving up stepwise to the eighth space (C#). A tempo marking  $\text{♩} = 66,000069$  is present above the staff.

# Celine Dion - Le blues du businessman

Cordes

♩ = 75,000000

♩ = 67,000031

31

33

41

48

54

61

68

74

♩ = 46,000031    ♩ = 66,000069

Celine Dion - Le blues du businessman

Piano

♩ = 75,000000

31

♩ = 67,000031

33

38

43

48

52

57

62

67

72

♩ = 46,000031

V.S.

